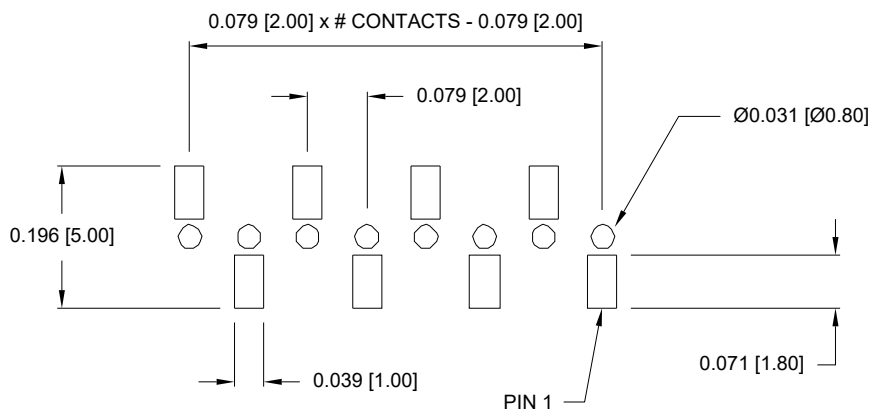
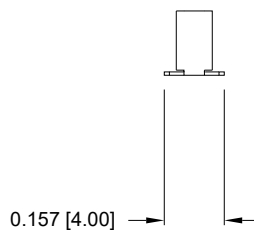
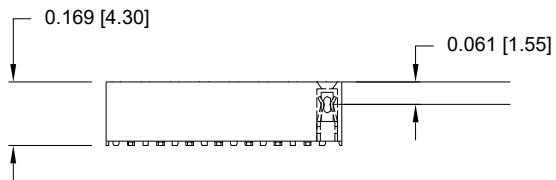


MATERIAL:

HOUSING: NYLON 6T, UL 94V-0, BLACK
 CONTACT: PHOSPHOR BRONZE
 PLATING: GOLD FLASH ENTIRE CONTACT

ELECTRICAL:

CURRENT RATING: 2 AMPS
 CONTACT RESISTANCE: 20mOHMS Max.
 INSULATOR RESISTANCE: 5,000MOHMS Min.
 DIELECTRIC WITHSTANDING: 500VAC
 OPERATING TEMPERATURE: -40° TO +105° C
 PROCESS TEMPERATURE: 260° C FOR 10 SECONDS



PCB LAYOUT

2863 YY 06 R P2

SERIES 2863 = SINGLE ROW
 POSITIONS SINGLE - INCREMENTS OF 1 (3 TO 40)
 TYPE 06 = SURFACE MOUNT
 RoHS COMPLIANT HIGH TEMP.
 PLATING P2 = GOLD FLASH

GENERAL TOLERANCE = ±0.008 [±0.20]

UNITS = inch[mm]

DO NOT SCALE FROM DRAWING

RoHS COMPLIANT



THESE DRAWINGS AND SPECIFICATIONS ARE THE PROPERTY OF NorComp AND SHALL NOT BE REPRODUCED, COPIED OR USED AS THE BASIS FOR THE MANUFACTURE OR SALE OF APPARATUS WITHOUT WRITTEN PERMISSION.

DRAWN: P. JENKINS
 DATE: 01/29/2006



| | | |
|---------------------|--------------|-------|
| SCALE: NTS | SHEET 1 OF 1 | REV 7 |
| DWG NO. 2863YY06RP2 | | |