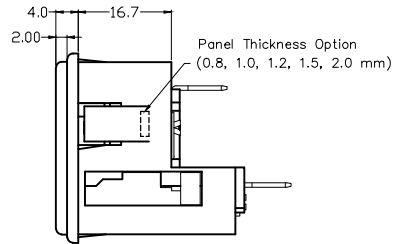
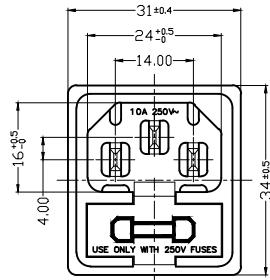
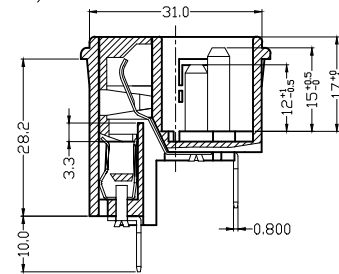
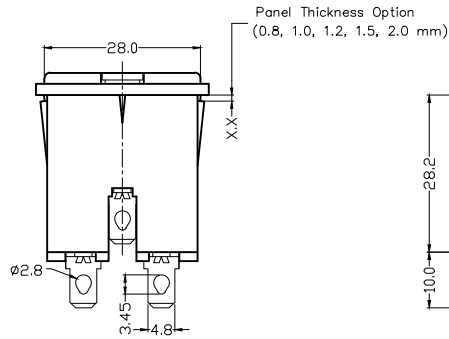


6 5 4 3 2 1

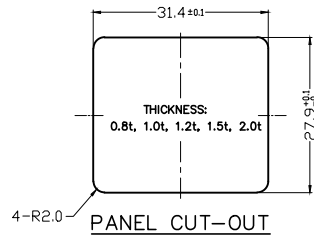
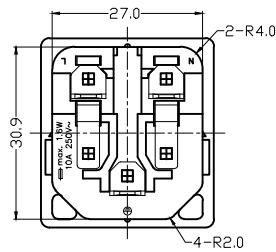
D



C






B



A

**SPECIFICATION**

- A: MATERIAL:  
 1. HOUSING: NYLON 66 FLAMMABILITY, UL 94V-0  
 2. TERMINAL: COPPER ALLOY, TIN PLATED
- B: CHARACTERISTICS:  
 1. RATING: 10A 250V~ NORTH AMERICA & EUROPE  
 2. INSULATION RESISTANCE: 100 MΩ MIN, AT 500 VDC  
 3. ELECTRIC STRENGTH: AC 2,000 V FOR 1 MINUTE
- C: APPROVALS:   
- D: ORDERING INFORMATION:

P/N	PANEL THICKNESS
42R35A-3122-080	0.8 mm
42R35A-3122-100	1.0 mm
42R35A-3122-120	1.2 mm
42R35A-3122-150	1.5 mm
42R35A-3122-200	2.0 mm
42R35A-3122-300	3.0 mm

RoHS  
COMPLIANT

REV	DATE	CHNG	CHECK	APPR
REVISIONS				
CHANGE				

TOLERANCE UNLESS OTHERWISE SPECIFIED	
X	± 1
X.X	± 0.4
X.XX	± 0.20
DRAWN BY	PB
CHECK BY	-
APPR BY	-
DATE:	9/15/21
DATE:	-
DATE:	-

**Power Dynamics, Inc.**  
 Phone: 973 560-0019 Whippany, New Jersey Fax: 973 560-0076

PART: IEC 60320 C14 APPLIANCE INLET; 2 FUSE  
 SNAP IN PANEL MOUNT; 4.8mm QC TERMINALS

PART #: **42R35A-3122-XXX**

SIZE: **A** ALL DIMENSIONS FOR REFERENCE ONLY  
 SCALE: **NTS** REF MODEL: 0717-2

SHEET 1 of 1  
 REV: -

6 5 4 3 2 1