


| SIGN | DATE | DESCRIPTION | APPROVER |
|------|------|-------------|----------|
| | | | |

THIS IS CAD DRAWING, DO NOT REVISE MANUALLY!!!

Material

- Terminal body: Thermoplastic (UL94V-0)
- Terminal cover: Thermoplastic (UL94V-0)
- Terminal screw: Steel Zinc plated "-" slot type
- Clamp cage: Steel, Zinc plated
- Terminal body: Steel, Zinc plated
- Solder pin: Copper, Tin plated

Electrical

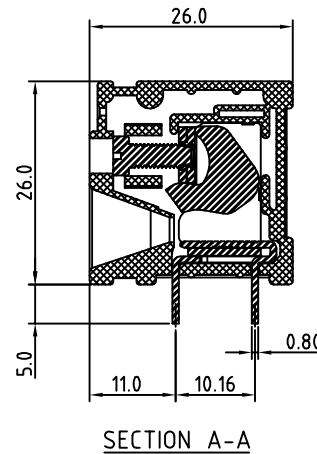
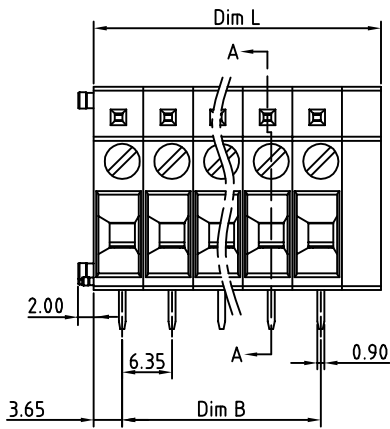
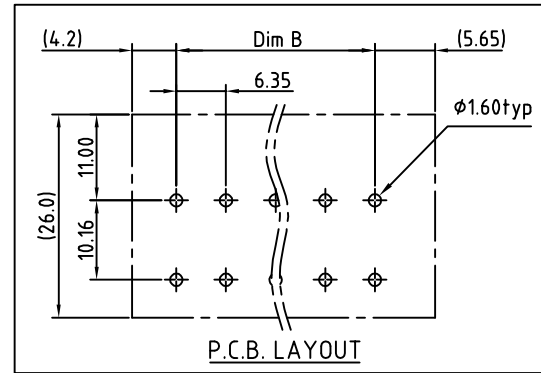
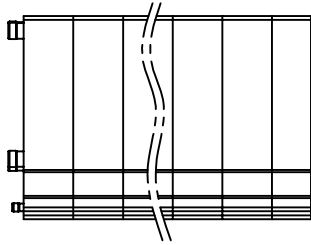
- Voltage rating: 300VAC
- Current rating: 30A
- Wire range:
 - Solid wire(AWG): 10-24
 - Stranded wire(AWG): 10-24
- Torque(Lb-In): 4.3
- Screw: M3
- Wire strip length: 15-16mm
- Withstanding Voltage: 1.6KV
- Operating temperature: -40°C to +115°C
- Soldering temperature: 260°C±10°C/5 Sec
- Safety approval: us

RoHS Compliant

PART NUMBER:

OSTKHXX0551

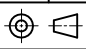
| | |
|--------------|---------------------|
| No. of Poles | COLOR |
| 02 2 Poles | 0: Black |
| 03 3 Poles | 2: Red |
| ... | 3: Orange |
| 16 16 Poles | 4: Yellow |
| | 5: Green (Standard) |
| | 6: Blue |
| | 8: Grey |



| Poles | 01 | 02 | 03 | 04 | 05 | 06 | 07 | 08 |
|-------|-------|-------|-------|-------|-------|-------|-------|-------|
| Dim L | 7.85 | 14.2 | 20.55 | 26.9 | 33.25 | 39.6 | 45.95 | 52.3 |
| Dim B | | 6.35 | 12.70 | 19.05 | 25.40 | 31.75 | 38.10 | 44.45 |
| TOL | ±0.10 | | ±0.15 | | ±0.20 | | ±0.25 | |
| Poles | 09 | 10 | 11 | 12 | 13 | 14 | 15 | 16 |
| Dim L | 58.65 | 65.0 | 71.35 | 77.7 | 84.05 | 90.4 | 96.75 | 103.1 |
| Dim B | 50.80 | 57.15 | 63.50 | 69.85 | 76.20 | 82.55 | 88.90 | 95.25 |
| TOL | ±0.30 | | ±0.35 | | ±0.40 | | | |

THESE DRAWINGS AND SPECIFICATIONS ARE THE PROPERTY OF ON-SHORE TECHNOLOGY, INC. AND SHALL NOT BE REPRODUCED, COPIED OR USED IN ANY MANNER WITHOUT THE PRIOR WRITTEN CONSENT OF ON-SHORE TECHNOLOGY, INC.



| | | | | | | | |
|----------|--|---|--|---|--|---------------------|--|
| TITLE | | OSTKH 6.35 Series 180 Degree Wire inlet | | | | | |
| PART NO. | | OSTKHXX0551 | | DWG NO. | | OSTKHXX0551.DWG | |
| APPROVED | | CHECKED | | DESIGNED | | DRAWN | |
| | | | | Aaron 2011.06.21 | | Aaron 2011.06.21 | |
| | | | |  | | Tolerance | |
| | | | | UNIT: mm | | X. ±0.50 | |
| | | | | SCALE: NONE | | X.X ±0.30 | |
| | | | | SHEET: 01/01 | | X.XX ±0.10 | |
| | | | | REV.: B | | X° ±1° | |