

MQI C & MQI T Series 5X7 Ceramic SMD Oscillator



- o Same day Shipping Available
- o 5x7mm SMD Package
- o RoHS Compliant
- o Tape & Reel package Available



Frequency	1.000MHZ to 150.000MHZ			
Frequency Stability (Inclusive of Temperature, Load & Voltage)	See Part Number Guide			
Aging @ +25°C	± 5 ppm per year max			
Operating Temperature Range	See Part Number Guide			
Storage Temperature Range	-55°C to +125°C			
Output Waveform	TTL		CMOS	
Supply Voltage (Vdd)	+3.3 VDC ± 10%	+5.0 VDC ± 10%	+3.3 VDC ± 10%	+5.0 VDC ± 10%
Supply Current (unloaded)	25mA	45mA	25mA	45mA
Load	5 TTL or 30pF	10 TTL or 50pF	15pF	30pF
Logic "0"	0.4 V max		0.3 V max	0.5 V max
Logic "1"	2.4 V min		3.0 V min	4.5 V min
Rise/Fall Time	4nSec max			
Start Up Time	10mSec max			
Duty Cycle	1.000MHZ to 66.000MHZ	45%/55% (TTL @ 1.4V Level / CMOS @ 50% Waveform)		
	66.000MHZ and above	40%/60% (TTL @ 1.4V Level / CMOS @ 50% Waveform)		
Jitter	1.000MHZ to 33.000MHZ	5pSec max (RMS)		
	33.000MHZ and above	10pSec max (RMS)		
Tristate Operation	Voh = 70% of Vdd min or No Connection to Enable Output Vol = 30% of Vdd max or grounded to Disable Output (High Impedance)			

Mechanical & Environmental Detail

Shock	MIL-STD-883, Method 2002 Cond B
Solderability	MIL-STD-883, Method 2003
Solvent Resistance	MIL-STD-202, Method 215
Vibration	MIL-STD-883, Method 2007, Cond A
Gross Leak Test	MIL-STD-883, Method 1014, Cond C
Fine Leak Test	MIL-STD-883, Method 1014, Cond A2
MSL	Level 1 per IPC/JEDEC J-STD 20

Marking Detail

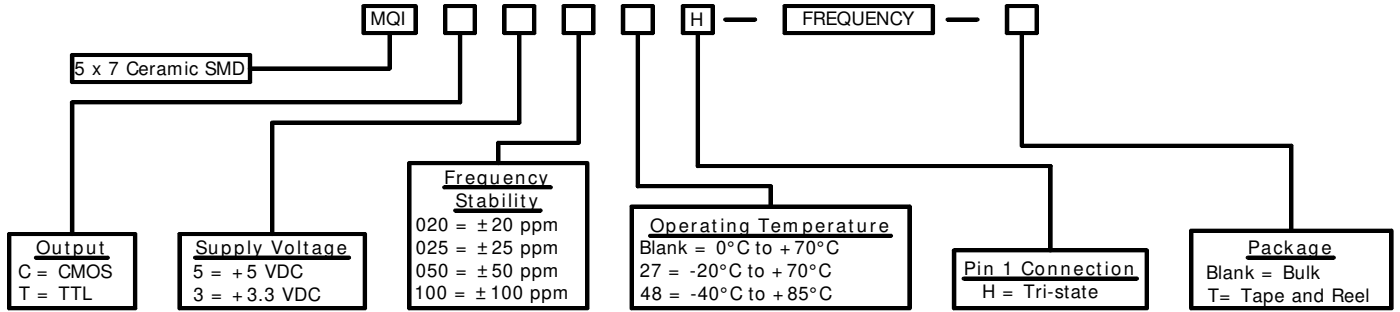
Line 1 = MXXXXX		
M	=	MMD
XXXXX	=	Frequency in MHZ
Line 2 = SYWWL		
S	=	Internal Code
YYWW	=	4 Digit Date Code (Year / Week)
L	=	Denotes RoHS Compliant
Line 3 = XXXXX		
Internal use only		
May vary with lots		
Black dot to denote Pin 1		



MMD Monitor/ Quartztek
 30400 Esperanza, Rancho Santa Margarita, CA, 92688
 Phone: (949) 709-5075, Fax: (949) 709-3536, www.mmdcomp.com
 Sales@mmdcomp.com

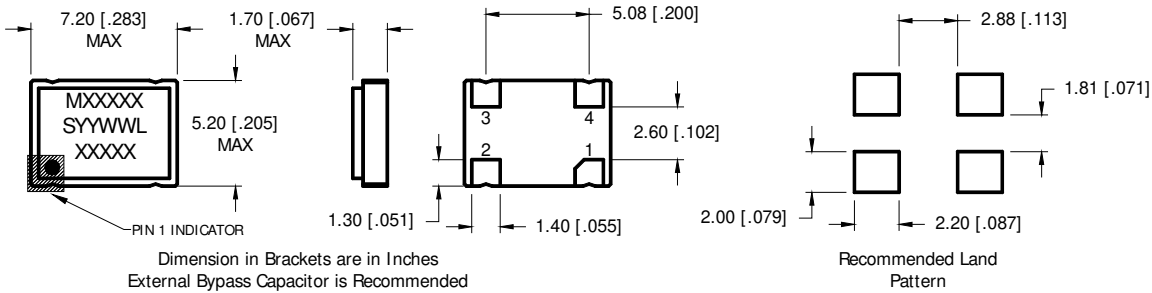


Part Number Guide



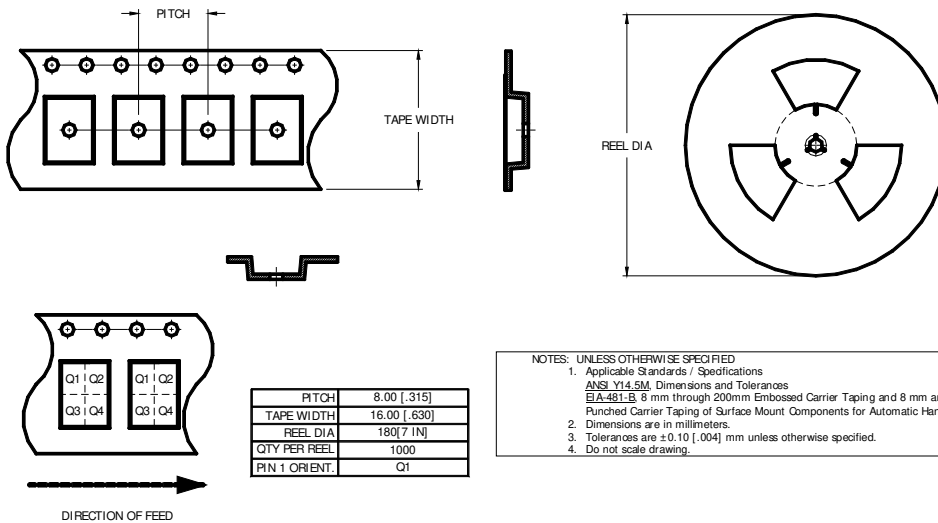
PLEASE CONSULT WITH MMD SALES DEPARTMENT FOR ANY OTHER PARAMETERS OR OPTIONS

Mechanical Details



Pin Connections	
Pin 1	Tri-state
Pin 2	Case Ground
Pin 3	Output
Pin 4	Supply Voltage

Tape & Reel Dimensions



MMD Monitor/ Quartztek
30400 Esperanza, Rancho Santa Margarita, CA, 92688
Phone: (949) 709-5075, Fax: (949) 709-3536, www.mmdcomp.com
Sales@mmdcomp.com

