



TITLE

T1/E1 QUAD TRANSFORMER

PN

37531

REV

E

AGENCY APPROVAL: NA

SH

2

OF

12

CATALOG SHEET

**SPECIFICATIONS**

EXTENDED TEMP RANGE (-40C TO +85C)

**1. INDUCTANCE:** (PRI'S)

1.2mH MIN. @ 0.01v, 100kHz, (25C)

600µh MIN.@0.01V,100kHz,(-40C TO +85C)

**2. LEAKAGE INDUCTANCE:** (PRI W/ SEC SHORTED)

.35µH MAX @ 1MHz

**3. TURNS RATIO:**

(PRI TO SEC)= 1 : 2CT ± 2%

**4. INTERWINDING CAPACITANCE:**(PRI TO SEC)

30 pf MAX @1MHz

**5. DC RESISTANCE:**

PRI =0.6 OHMS MAX

SEC=1.0OHMS MAX

**6. DIELECTRIC STRENGTH:** (PRI TO SEC)

1500 VAC FOR 60 SECONDS

**7. RETURN LOSS:** (WINDING WITH TURNS RATIO 2 IS 100 OHM REF.)

51KHz TO 102KHz 12dB MIN

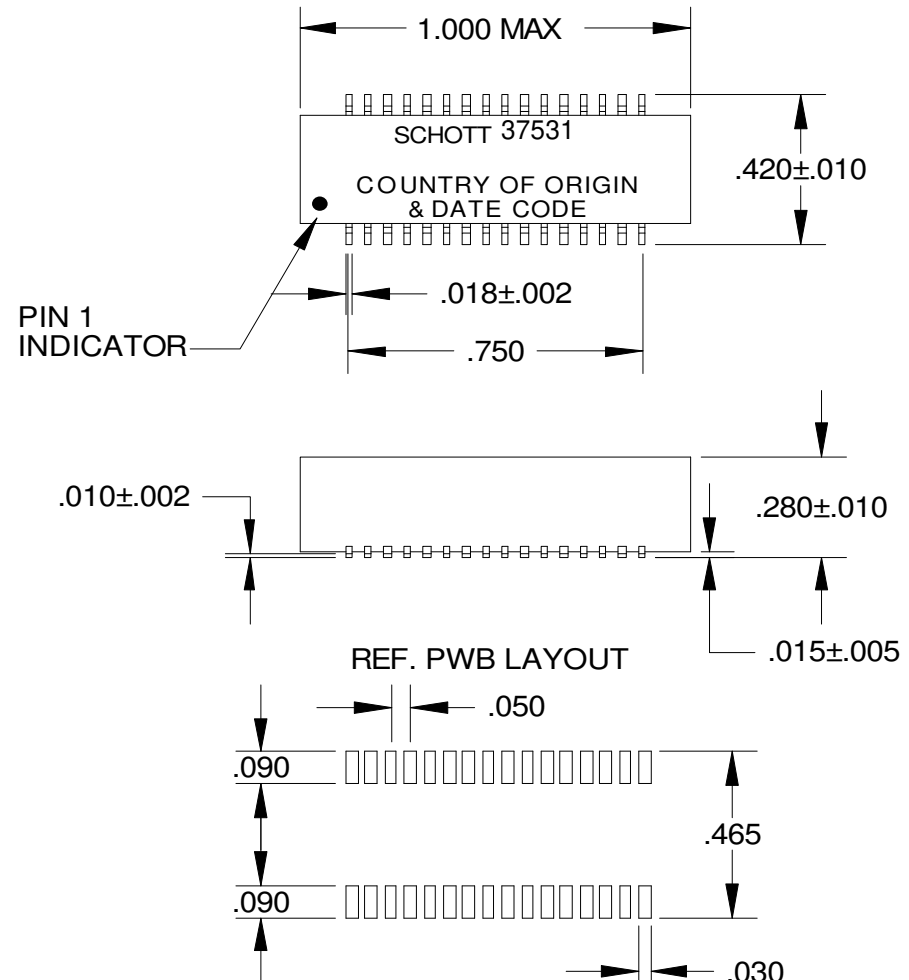
102KHz TO 2.048MHz 18dB MIN

2.048MHz TO 3.072 MHz 14dB MIN

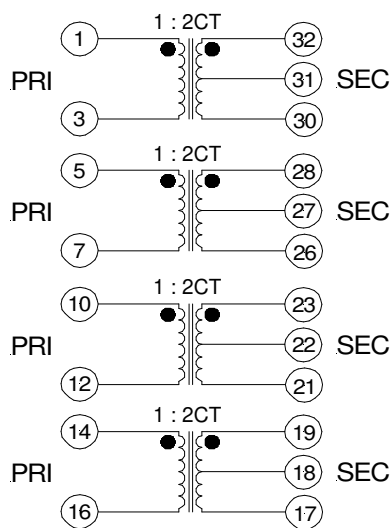
**8. CROSS TALK:** 65dB OR BETTER

**9.COMMON MODE REJECTION RATIO:** 50 dB OR BETTER @1MHZ

**DIMENSIONAL OUTLINE**



**SCHEMATIC**



INCHES / DECIMAL	.XX = ± .01	.XXX = ±.005	ANGLES ± 1°
MILLIMETERS (mm)	.XX = ± 0.20		