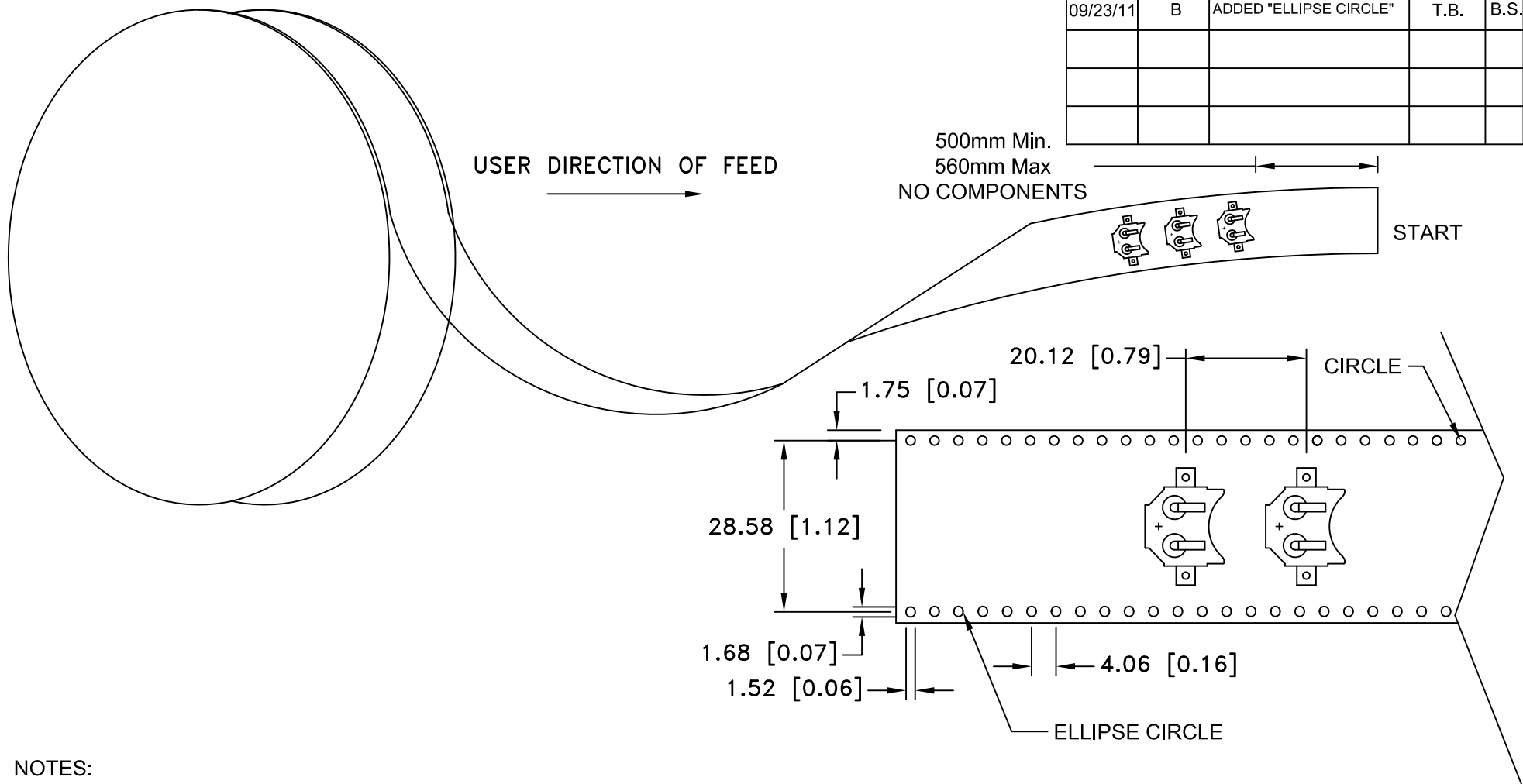



Date	SYM	REVISION RECORD	AUTH	DR.	CK.
10/22/05	A	ADDED "ROHS COMPLIANT"	T.B.	B.S.	
09/23/11	B	ADDED "ELLIPSE CIRCLE"	T.B.	B.S.	



- NOTES:
1. 10 Sprocket hole pitch cumulative tolerance $\pm 0.20\text{mm}$
 2. Carrier camber not to exceed 1mm in 250mm
 3. Material: Black Conductive Polystyrene
 4. Thickness: $0.35 \pm 0.05\text{mm}$
 5. Component loader per 13" reel: 800 pcs
 6. All dimensions per EIA-481-2A
 7. ROHS COMPLIANT

Tolerance (Except as noted)	 Memory Protection Devices, Inc 200 Broad Hollow Road, Farmingdale, New York 11735	Scale	Drawn By B.S.
			Approved By T.B.
decimal $\pm .5$ (.020)	Title TAPE AND REEL SPECIFICATION FOR SURFACE MOUNT BATTERY HOLDER FOR BK-885	Date 09/23/11	
Fractional $\pm .8$ (.030)		Drawing Number BK-885-TR-REEL	
Angular $\pm 3^\circ$			