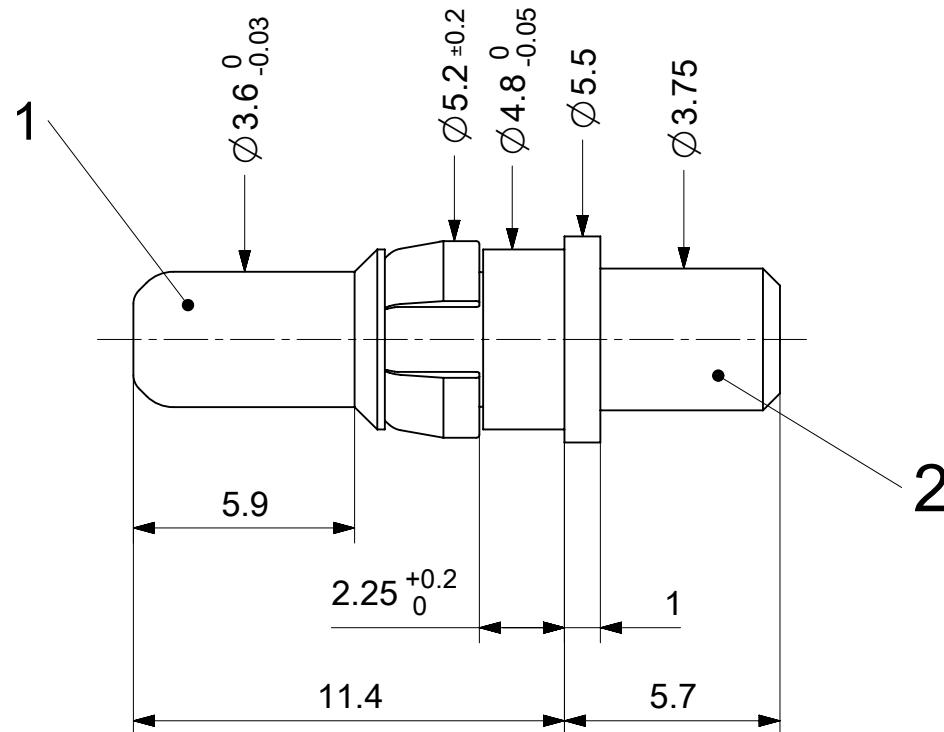


2:1



RoHS compliant
by exemption

1731120085	FMP016P104	104
1731121104	FMP016P105	105
1731120156	FMP016P203	203
Material Number	FCT Part Number	Material + Finish See extra sheet

UNLESS OTHERWISE SPECIFIED DIMENSIONS FOR REFERENCE ONLY				REPLACEMENT FOR DOCUMENT NUMBER: FMP016P								
THIS DRAWING CONTAINS INFORMATION THAT IS PROPRIETARY TO MOLEX ELECTRONIC TECHNOLOGIES, LLC AND SHOULD NOT BE USED WITHOUT WRITTEN PERMISSION												
FUNCTIONAL SYMBOLS	DIMENSION UNITS	SCALE	CURRENT REV DESC:									
$\frac{F}{A} = 0$	mm	5:1	EC NO: 686935 DRWN: FVETTER 2021/11/29 CHK'D: MTEUBEL 2021/11/30 APPR: MTEUBEL 2021/11/30									
$\frac{E}{E} = 0$	GENERAL TOLERANCES (UNLESS SPECIFIED)											
$\frac{F}{P} = 0$	ANGULAR TOL ± °											
DIVISIONAL SYMBOLS	4 PLACES	±										
	3 PLACES	±	INITIAL REVISION:									
	2 PLACES	±	DRWN: VLOKESHA 2021/04/01									
	1 PLACE	±	APPR: MTEUBEL 2021/11/25									
	0 PLACES	±	DRAFT WHERE APPLICABLE MUST REMAIN WITHIN DIMENSIONS		FIRST ANGLE PROJECTION	DRAWING	SERIES	MATERIAL NUMBER	CUSTOMER	DOC TYPE	DOC PART	REVISION
						A4-SIZE	173112	SEE TABLE	GENERAL MARKET	PSD	000	A1
<div style="display: flex; justify-content: space-between;"> <div style="text-align: center;"> <p>molex</p> <p>FCT 40A HIGH POWER CONTACT FOR D-SUB</p> <p>PRODUCT CUSTOMER DRAWING</p> </div> <div style="text-align: right;"> <p>DOCUMENT NUMBER: 1731120085</p> <p>DOC TYPE: PSD</p> <p>DOC PART: 000</p> <p>REVISION: A1</p> </div> </div>												

DOCUMENT STATUS	P1	RELEASE DATE	2021/11/30	09:45:10
-----------------	----	--------------	------------	----------