

## Housing - HC-D 7-AML-26/GW/PA BK - 1410686

Please be informed that the data shown in this PDF Document is generated from our Online Catalog. Please find the complete data in the user's documentation. Our General Terms of Use for Downloads are valid (<http://phoenixcontact.com/download>)



HEAVYCON D7 panel mounting base, with single locking latch, height: 25.5 mm, angled, PA, color: black



### Key Commercial Data

Packing unit	1 STK
Weight per Piece (excluding packing)	26.0 g
Custom tariff number	85389099
Country of origin	Germany

### Technical data

#### Dimensions

Height	25.5 mm
Width	40.5 mm
Length	38 mm
Length of the assembly cutout	21.5 mm
Width of the assembly cutout	21.5 mm

#### Ambient conditions

Degree of protection of housing (IP)	IP54
	IP65 (with sealing screw)
Ambient temperature (operation)	-40 °C ... 125 °C

#### General

Note	For contact inserts HC-D7, D8, A3, A4, B5, HS2-D7
Size	D7
Housing type	Panel mounting base

# Housing - HC-D 7-AML-26/GW/PA BK - 1410686

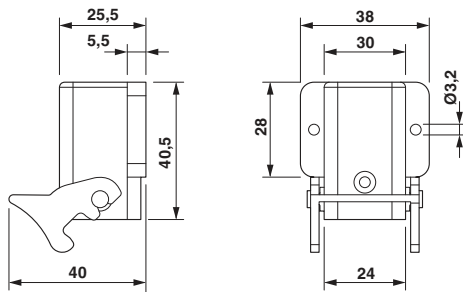
## Technical data

### General

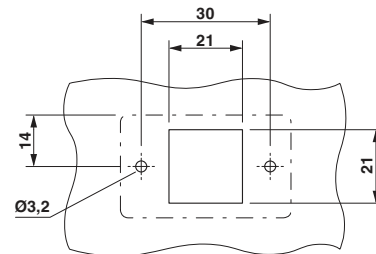
Locking type	With single locking latch
Screw connection	none
Housing material	Polyamide
Seal material	NBR
Material lock	Polyamide

## Drawings

Dimensional drawing



Dimensional drawing



Panel cutout

Dimensional drawing

## Classifications

### eCl@ss

eCl@ss 4.0	27140816
eCl@ss 4.1	27140816
eCl@ss 5.0	27143424
eCl@ss 5.1	27143424
eCl@ss 6.0	27143424
eCl@ss 7.0	27440209
eCl@ss 8.0	27440202
eCl@ss 9.0	27440202

### ETIM

ETIM 3.0	EC000437
ETIM 5.0	EC000437

### UNSPSC

UNSPSC 6.01	31261502
UNSPSC 7.0901	31261502

# Housing - HC-D 7-AML-26/GW/PA BK - 1410686

## Classifications

### UNSPSC

UNSPSC 11	31261502
UNSPSC 12.01	31261502
UNSPSC 13.2	31261502

## Approvals

### Approvals

---

Approvals

EAC / GL

---

Ex Approvals

---

Approvals submitted

---

### Approval details

EAC

GL

## Accessories

### Accessories

#### Mounting material

Sealing screw - HC-D 7-DS-IP65 - 1686229



Sealing screw, Size: Countersunk head