

High IP3 Frequency Mixer

SYM-18H+

Level 17 (LO Power +17 dBm) 5 to 1800 MHz



Generic photo used for illustration purposes only

CASE STYLE: TTT167

+RoHS Compliant

The +Suffix identifies RoHS Compliance. See our web site for RoHS Compliance methodologies and qualifications

Available Tape and Reel at no extra cost

| Reel Size | Devices/Reel |
|-----------|----------------------|
| 7" | 10, 20, 50, 100, 200 |
| 13" | 500 |

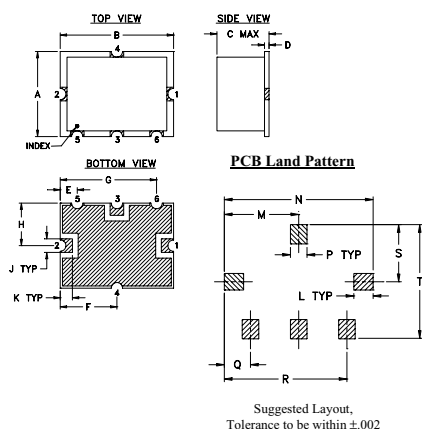
Maximum Ratings

| | |
|---|----------------|
| Operating Temperature | -40°C to 85°C |
| Storage Temperature | -55°C to 100°C |
| RF Power | 200mW |
| IF Current | 40mA |
| Permanent damage may occur if any of these limits are exceeded. | |

Pin Connections

| | |
|--------|-------|
| LO | 2 |
| RF | 1 |
| IF | 3 |
| GROUND | 4,5,6 |

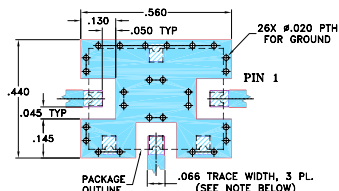
Outline Drawing



Outline Dimensions (inch/mm)

| | | | | | | | | | |
|------|-------|-------|------|------|-------|-------|-------|-------|------|
| A | B | C | D | E | F | G | H | J | K |
| .38 | .50 | .23 | .020 | .075 | .250 | .425 | .187 | .050 | .050 |
| 9.65 | 12.70 | 5.84 | 0.51 | 1.91 | 6.35 | 10.80 | 4.75 | 1.27 | 1.27 |
| L | M | N | P | Q | R | S | T | wt. | |
| .070 | .270 | .540 | .060 | .095 | .445 | .208 | .415 | grams | |
| 1.78 | 6.86 | 13.72 | 1.52 | 2.41 | 11.30 | 5.28 | 10.54 | 0.8 | |

Demo Board MCL P/N: TB-12 Suggested PCB Layout (PL-079)



- TRACE WIDTH IS SHOWN FOR ROGERS R04350B WITH DIELECTRIC THICKNESS .030" ± .002"; COPPER: 1/2 OZ. EACH SIDE. FOR OTHER MATERIALS TRACE WIDTH MAY NEED TO BE MODIFIED.
 - THE USE OF SOLDER MASK OVER THE GROUND AREA UNDER THE UNIT AS SHOWN IS RECOMMENDED TO PREVENT POTENTIAL SHORTING. IF USER CHOOSES TO EXPOSE METAL UNDER THE ENTIRE UNIT GROUND PAD FOR IMPROVED GROUNDING, IT IS RECOMMENDED A SOLDER MASK DAM BE APPLIED AROUND EACH GROUND PAD TO ENSURE FILLET AND CONNECTION AT GROUND PADS.
 - BOTTOM SIDE OF THE PCB IS CONTINUOUS GROUND PLANE.
- DENOTES PCB COPPER LAYOUT WITH SMOBC (SOLDER MASK OVER BARE COPPER). SEE NOTE 2.
 ▨ DENOTES COPPER LAND PATTERN FREE OF SOLDER MASK

Notes

- Performance and quality attributes and conditions not expressly stated in this specification document are intended to be excluded and do not form a part of this specification document.
- Electrical specifications and performance data contained in this specification document are based on Mini-Circuit's applicable established test performance criteria and measurement instructions.
- The parts covered by this specification document are subject to Mini-Circuits standard limited warranty and terms and conditions (collectively, "Standard Terms"); Purchasers of this part are entitled to the rights and benefits contained therein. For a full statement of the Standard Terms and the exclusive rights and remedies thereunder, please visit Mini-Circuits' website at www.minicircuits.com/MCLStore/terms.jsp

Features

- low conversion loss, 5.75 dB typ.
- excellent L-R isolation, 45 dB typ.; L-I, 50 dB typ.
- IF response to DC

Applications

- VHF/UHF TV

Electrical Specifications

| FREQUENCY (MHz) | | CONVERSION LOSS (dB) | | | | LO-RF ISOLATION (dB) | | | | | | LO-IF ISOLATION (dB) | | | IP3 at center band (dBm) | | |
|-----------------|----------|----------------------|----------|-------------|------|----------------------|------|------|------|------|------|----------------------|------|------|--------------------------|------|----|
| LO/RF | IF | Mid-Band | | Total Range | L | | | M | | | U | | | Typ. | | | |
| $f_L - f_U$ | | \bar{X} | σ | Max. | Typ. | Min. | Typ. | Min. | Typ. | Min. | Typ. | Min. | Typ. | | Min. | Typ. | |
| 5-1800 | 10-1500* | 5.75 | .10 | 7.6 | 8.9 | 50 | 28 | 45 | 35 | 40 | 24 | 39 | 22 | 50 | 30 | 22 | 30 |

1 dB COMP: +14 dBm typ.

m=mid band [$2f_L$ to $f_U/2$]

*Conversion loss measured at IF frequency between 10 and 1300 MHz

L = low range [f_L to $10 f_L$]

m = mid band [$2f_L$ to $f_U/2$]

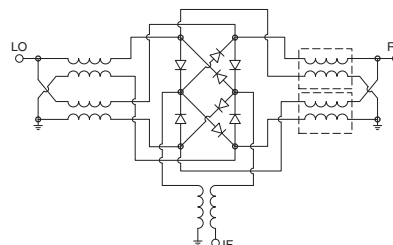
M = mid range [$10 f_L$ to $f_U/2$]

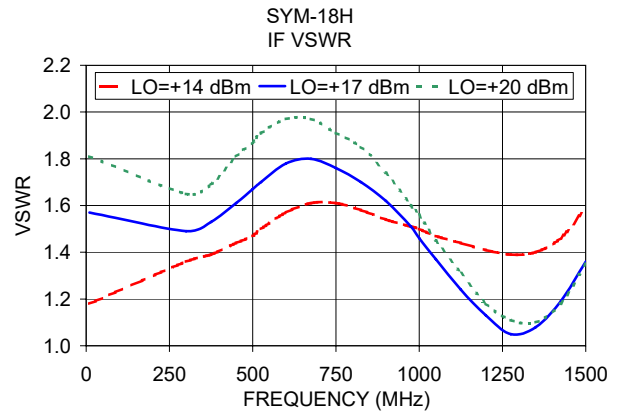
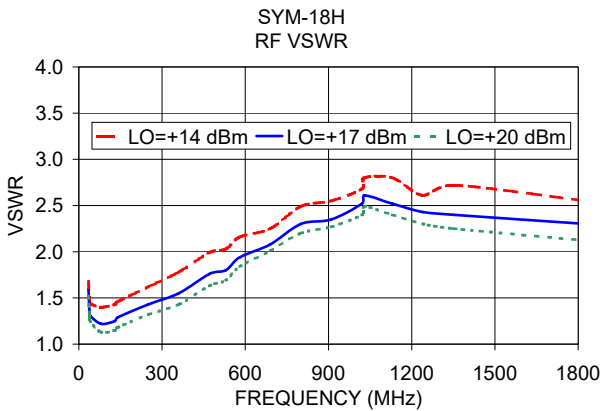
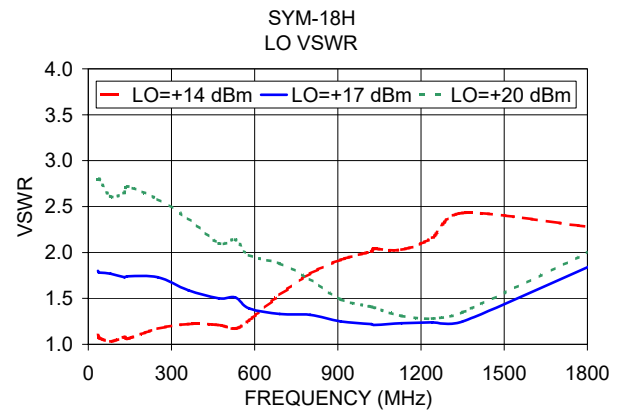
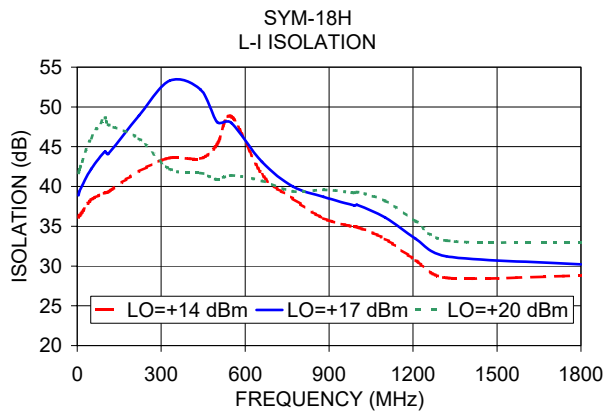
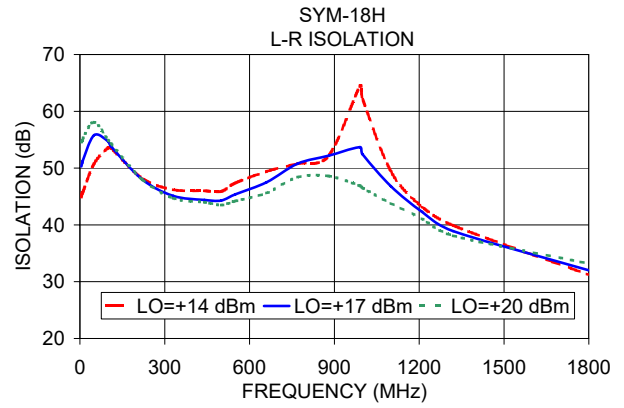
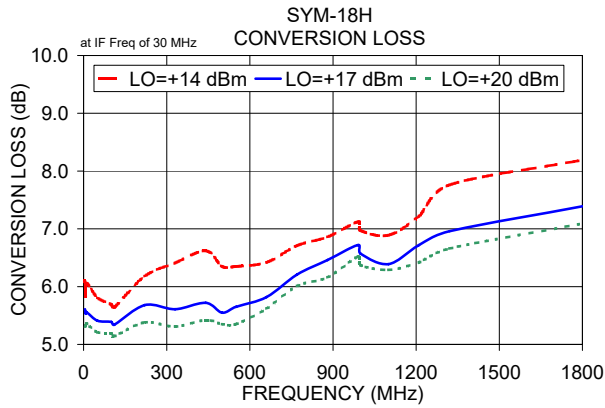
U = upper range [$f_U/2$ to f_U]

Typical Performance Data

| Frequency (MHz) | | Conversion Loss (dB) | Isolation L-R (dB) | Isolation L-I (dB) | VSWR RF Port (:1) | VSWR LO Port (:1) |
|-----------------|---------|----------------------|--------------------|--------------------|-------------------|-------------------|
| RF | LO | LO +17dBm | LO +17dBm | LO +17dBm | LO +17dBm | LO +17dBm |
| 5.00 | 35.00 | 5.61 | 50.30 | 38.90 | 1.58 | 1.80 |
| 8.00 | 38.00 | 5.53 | 50.90 | 39.40 | 1.36 | 1.78 |
| 10.00 | 40.00 | 5.56 | 51.30 | 39.60 | 1.31 | 1.78 |
| 50.00 | 80.00 | 5.41 | 55.80 | 42.20 | 1.22 | 1.77 |
| 100.00 | 130.00 | 5.39 | 54.70 | 44.40 | 1.25 | 1.73 |
| 110.48 | 140.48 | 5.34 | 53.80 | 44.10 | 1.29 | 1.74 |
| 220.45 | 250.45 | 5.68 | 48.00 | 48.90 | 1.43 | 1.73 |
| 330.43 | 360.43 | 5.61 | 45.10 | 53.30 | 1.55 | 1.59 |
| 440.40 | 470.40 | 5.72 | 44.40 | 52.20 | 1.76 | 1.50 |
| 500.00 | 530.00 | 5.55 | 44.30 | 48.10 | 1.80 | 1.51 |
| 550.38 | 580.38 | 5.65 | 45.40 | 48.00 | 1.94 | 1.39 |
| 660.35 | 690.35 | 5.82 | 47.50 | 43.10 | 2.08 | 1.33 |
| 770.33 | 800.33 | 6.21 | 50.80 | 40.00 | 2.30 | 1.32 |
| 880.30 | 910.30 | 6.46 | 52.20 | 38.70 | 2.35 | 1.25 |
| 990.28 | 1020.28 | 6.72 | 53.70 | 37.60 | 2.52 | 1.22 |
| 1000.00 | 1030.00 | 6.57 | 52.40 | 37.70 | 2.61 | 1.21 |
| 1100.25 | 1130.25 | 6.39 | 46.80 | 36.10 | 2.52 | 1.23 |
| 1210.23 | 1240.23 | 6.72 | 42.30 | 33.40 | 2.43 | 1.24 |
| 1320.20 | 1350.20 | 6.96 | 38.90 | 31.20 | 2.40 | 1.25 |
| 1800.00 | 1830.00 | 7.39 | 32.00 | 30.20 | 2.30 | 1.88 |

Electrical Schematic





Notes

- A. Performance and quality attributes and conditions not expressly stated in this specification document are intended to be excluded and do not form a part of this specification document.
- B. Electrical specifications and performance data contained in this specification document are based on Mini-Circuit's applicable established test performance criteria and measurement instructions.
- C. The parts covered by this specification document are subject to Mini-Circuits standard limited warranty and terms and conditions (collectively, "Standard Terms"); Purchasers of this part are entitled to the rights and benefits contained therein. For a full statement of the Standard Terms and the exclusive rights and remedies thereunder, please visit Mini-Circuits' website at www.minicircuits.com/MCLStore/terms.jsp

