

4

3

2

1

THIS DRAWING IS UNPUBLISHED. RELEASED FOR PUBLICATION
© COPYRIGHT ALL RIGHTS RESERVED.

LOC		DIST		REVISIONS			
P	LTR	DESCRIPTION		DATE	DWN	APVD	
	C3	ECR-13-004621		13MAR2013	MY	GB	

REPLACED BY OCEAN STYLE APPLICATOR PART NUMBER 2151177-2

FOR REPLACEMENT PARTS FOR APPLICATOR 1530344
REFER TO ADDITIONAL PAGE(S). SPARE PARTS KIT (IF LISTED)
WILL REMAIN AVAILABLE.

THE REPLACEMENT OCEAN STYLE APPLICATOR HAS THE
SAME TERMINATOR/PRESS INTERFACE AS APPLICATOR
1530344

Dimensioning and tolerancing per ASME Y14.5M-2009

B


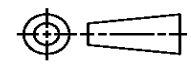
A

D

C

B

A

THIS DRAWING IS A CONTROLLED DOCUMENT.		DWN M. YOUNGER	 TE Connectivity			
DIMENSIONS:		CHK M. YOUNGER				
		APVD G. BAILEY	NAME FINE ADJUST SIDE FEED HDI APPLICATOR			
		TOLERANCES UNLESS OTHERWISE SPECIFIED:		PRODUCT SPEC		
MATERIAL		WEIGHT	SIZE A3	CAGE CODE	DRAWING NO C-1530344	RESTRICTED TO
FINISH		CUSTOMER ACCESSIBLE PRODUCTION DRAWING		SCALE	SHEET 1 OF 2	REV C3

Dimensioning and tolerancing per ASME Y14.5M-2009

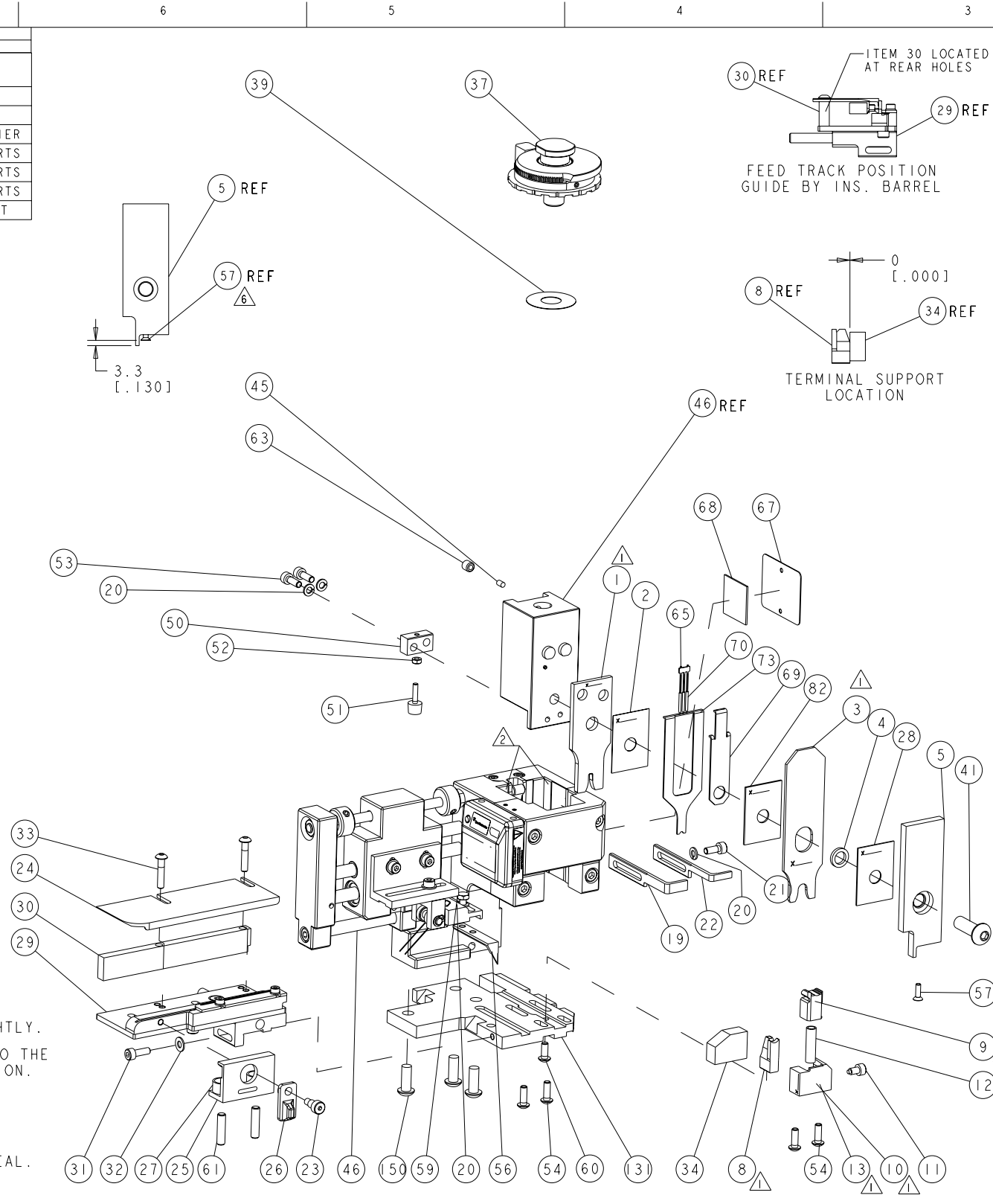
PART NUMBER	REV	TERMINATOR	FEED TYPE	DESCRIPTION
1530344-1	C	LEADMAKER	PNEUMATIC FEED	CUTS CARRIER
1530344-2	C	BENCH	PNEUMATIC FEED	CUTS CARRIER
1530344-6	C	LEADMAKER	PNEUMATIC FEED	CONTINUOUS CARRIER
7-1530344-1	C	LEADMAKER	PNEUMATIC FEED	-1 AND SPARE PARTS
7-1530344-2	C	BENCH	PNEUMATIC FEED	-2 AND SPARE PARTS
7-1530344-6	C	LEADMAKER	PNEUMATIC FEED	-6 AND SPARE PARTS
7-1530344-7	A	-	-	SPARE PARTS KIT

CRIMP DATA		TE TERMINAL	TE CRIMP SPECS
TERMINAL NAME: STANDARD POWER TIMER TERMINAL			
CRIMP	SIZE	TYPE	RANGE
WIRE	2.79 [.110 IN]	F	1.50-2.50 mm ²
INSUL	6.60 [.260 IN]	O	Ø6.0mm [.236 IN] MAX
WIRE STRIP LENGTH 4.90-5.50 [.193-.217 IN]		APPL INSTRUCTIONS 411-3283	
TERMINAL	114-18037(A)	-	FEED
APPL SPEC	114-18388(B)	-	19.50 [.768 IN]
TERMINALS APPLIED			
TERMINAL PN	SEAL PN	MFR PN	-
969042 (A)	963244	-	-
1241414 (B)	963245	-	-
-	1394511	-	-
-	2113194-1	357972742B	-
WIRE SIZE	CRIMP HEIGHT	REF SETTINGS	
2.50mm ²	2.04 ±0.05 [.080 ±.002 IN]	B5	
2.00mm ²	1.90 ±0.05 [.075 ±.002 IN]	C6	
1.50mm ²	1.76 ±0.05 [.069 ±.002 IN]	D6	

- △ RECOMMENDED SPARE PARTS.
- GREASE RAM, CAM, CAM FOLLOWER AND FEED ROD LIGHTLY.
 - CERTAIN TERMINALS REQUIRE LUBRICATION. REFER TO THE APPLICATOR INSTRUCTION SHEET FOR MORE INFORMATION.
 - LUBRICATE DAILY PER THE APPLICATOR INSTRUCTION SHEET SUPPLIED WITH THE APPLICATOR.
 - THIS APPLICATOR APPLIES TERMINAL WITH A SEAL. INSULATION DIA QUOTED IS OUTSIDE DIAMETER OF SEAL. WIRE INSULATION DIA IS DEPENDENT ON SEAL BEING APPLIED.

SEAL	963244-1	2-3mm OD INS
SEAL	963245-1	3.3-3.7mm OD INS
SEAL	1394511-1	2-2.7mm OD INS
SEAL	2113194-1	2.7-2.9mm OD INS
 - APPLY TORQ-SEAL IN ALLEN SOCKET TO FILL HOLE AFTER FLAT HD HAS BEEN ADJUSTED TO CORRECT HEIGHT AT QUALIFICATION. APPLY #1-23419-5 LOC-TITE TO THREADS.

*** WARNING**
ON INSTALLATION, SET WIRE DISC TO LARGEST WIRE SIZE SETTING. USE OF SETTINGS BELOW MIN. REQUIRED CRIMP HEIGHT SETTING WILL CAUSE DAMAGE TO CRIMP TOOLING.



SET UP GAGE
458637-3

REV	DESCRIPTION	DATE	BY	APPV
C	ECR-10-026256	22DEC2010	RK	GB
C1	ECR-11-001255	24JAN2011	RS	SX

-	3	3	3	3	3	994988-1	SCR, BTN SKT HD CAP M6X16.0 W/NYLOK	150
-	1	1	1	1	1	1320992-1	PLATE, BASE	131
-	1	1	1	1	1	455888-9	SPACER, CRIMPER	82
-	1	1	1	1	1	1490525-1	DEPRESSOR, WIRE	73
-	1	1	1	1	1	1338705-8	DOCUMENTATION PACKAGE	71
-	3	3	3	3	3	1-23147-4	SPRING, COMPRESSION	70
-	1	1	1	1	1	1490524-2	DEPRESSOR, SPACER	69
-	AR	AR	AR	AR	AR	982057-2	TAPE, FOAM	68
-	1	1	1	1	1	1-461264-0	PLATE, IDENTIFICATION	67
-	1	1	1	1	1	1424350-1	HOLDER, PIN, WIRED	65
-	1	1	1	1	1	3-18031-0	SCR, SET, CUP POINT M6 X 6.0	63
-	2	2	2	2	2	2-18032-5	SCR, SET, FLT POINT M5 X 20.0	61
-	1	1	1	1	1	18024-7	SCR, BTN SKT HD CAP (M4 X 10.0)	60
-	1	1	1	1	1	5-18022-2	SCR, HEX HD CAP M4 X 8.0	59
-	1	1	1	1	1	985575-3	SCR, FLT SKT HD CAP M3 X 10.0	57
-	1	1	1	1	1	1338685-1	PAWL, FEED	56
-	4	4	4	4	4	18024-8	SCR, BTN SKT HD CAP (M4 X 12.0)	54
-	2	2	2	2	2	1-18023-2	SCR, SKT HD CAP M4 X 12.0	53
-	1	1	1	1	1	18030-1	NUT, HEX, REG M3	52
-	1	1	1	1	1	811242-6	BUMPER, HOLD DOWN	51
-	1	1	1	1	1	690753-2	SPACER, TONKER	50
-	1	1	1	1	1	1333303-1	ASSEMBLY, AIR FEED	46
-	1	1	1	1	1	690191-1	PLUG, NYLON	45
-	-	-	-	-	-	-	-	44
-	1	1	1	1	1	2-18024-6	SCR, BTN SKT HD CAP (M8 X 25.0)	41
-	1	1	1	1	1	690125-1	SHIM SUB-ASSY	39
-	1	1	1	1	1	879103-2	FINE ADJUST HEAD ASSEMBLY	37
-	1	1	1	1	1	1-1320934-2	SUPPORT, TERMINAL	34
-	2	2	2	2	2	1-18024-0	SCR, BTN SKT HD CAP (M4 X 20.0)	33
-	1	1	1	1	1	18027-2	WASHER, FLAT, REG M4	32
-	1	1	1	1	1	1-18023-2	SCR, SKT HD CAP M4 X 12.0	31
-	1	1	1	1	1	1-1320908-2	SPACER, STRIP GUIDE	30
-	1	1	1	1	1	1633073-2	STRIP GUIDE ASSEMBLY	29
-	1	1	1	1	1	455888-6	SPACER, CRIMPER	28
-	2	2	2	2	2	1-22284-0	SPRING, COMPRESSION	27
-	1	1	1	1	1	356835-1	LEVER, DRAG RELEASE	26
-	1	1	1	1	1	240792-1	DRAG, TERMINAL	25
-	1	1	1	1	1	1320928-3	STRIP GUIDE	24
-	1	1	1	1	1	980371-4	SCR, SKT HD SHLDR 5.0 DIA X 6.0	23
-	1	1	1	1	1	690472-2	STRIPPER	22
-	1	1	1	1	1	1-18023-1	SCR, SKT HD CAP M4 X 10.0	21
-	4	4	4	4	4	18025-2	WASHER, SPRG LOCK, REG M4	20
-	1	1	1	1	1	690472-1	STRIPPER	19
-	1	1	1	1	1	1338684-2	SHEAR HOLDER, FRONT	13
-	1	1	1	1	1	3-22280-3	SPRING, COMPRESSION	12
-	1	1	1	1	1	356885-5	STOP, SHEAR	11
-	1	1	1	1	1	1-1320921-0	SHEAR HOLDER, FRONT, CUT	10
-	1	1	1	1	1	318707-7	FLOATING SHEAR, FRONT	9
-	1	2	2	2	1	1333229-2	ANVIL, COMBINATION	8
-	-	-	-	-	-	-	-	7
-	-	-	-	-	-	-	-	6
-	1	1	1	1	1	1-1338680-5	DEPRESSOR, SHEAR	5
-	1	1	1	1	1	238011-7	BLOCK, CRIMPER SPACER	4
-	1	2	2	2	1	8-683454-4	CRIMPER, INSULATION O	3
-	1	1	1	1	1	455888-3	SPACER, CRIMPER	2
-	1	2	2	2	1	456408-3	CRIMPER, WIRE PREMIUM	1