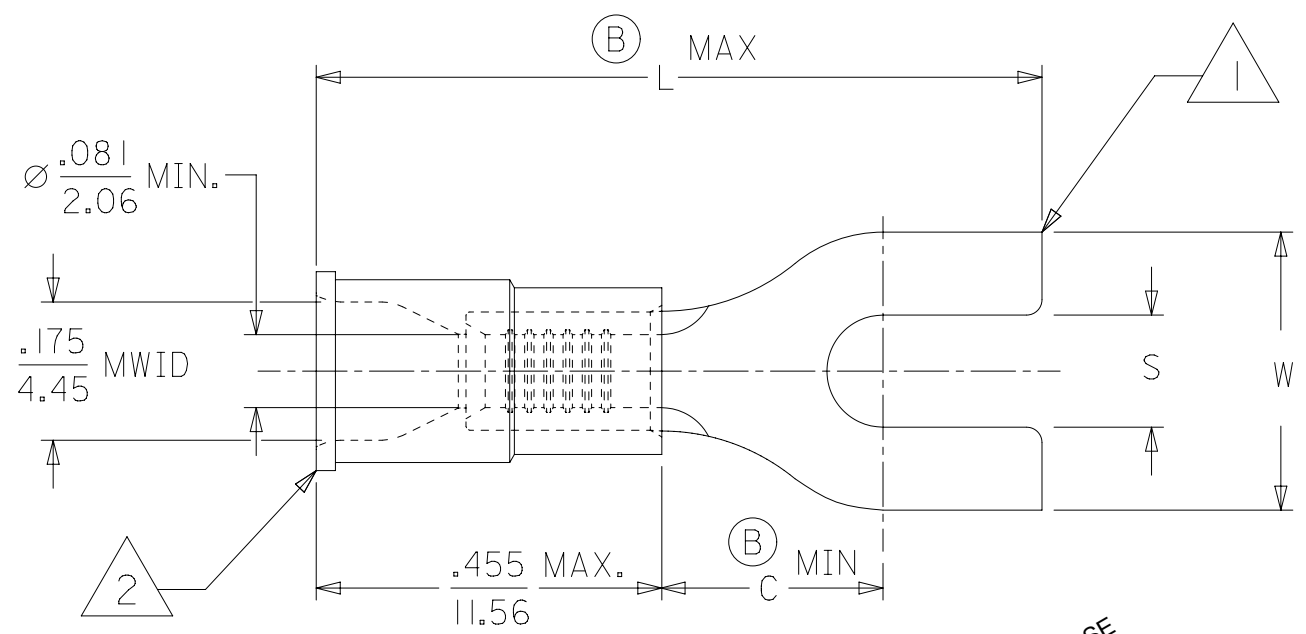
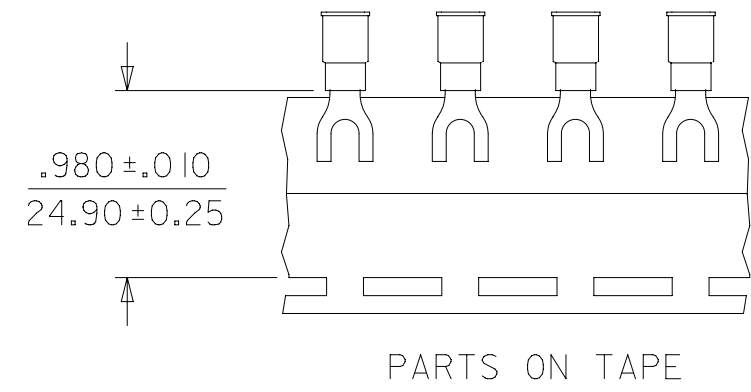


10	9	8	7	6	5	4	3	2	1
MATERIAL NUMBER	ENGINEERING NUMBER	STUD SIZE	"S" ±.005/(0.13)	"W" ±.010/(0.25)	Ⓟ "C" MIN	Ⓟ "L" MAX	PACKAGING		
191420020	B-207-06X	6	.146/(3.71)	.245/(6.22)	.209/(5.31)	.834/(21.18)	LOOSE PIECE		
191420024	B-224-06X	6	.146/(3.71)	.295/(7.49)	.211/(5.36)	.831/(21.11)			
191420027	B-224-08X	8	.173/(4.39)	.295/(7.49)	.211/(5.36)	.831/(21.11)			
191420029	B-227-06X	6	.146/(3.71)	.362/(9.19)	.269/(6.83)	.966/(24.54)			
191420030	B-227-08X	8	.173/(4.39)	.388/(9.85)	.269/(6.83)	.966/(24.54)			
191420032	B-227-10X	10	.198/(5.03)	.388/(9.85)	.269/(6.83)	.966/(24.54)			
191420069	B-207-04XT	4	.119/(3.02)	.245/(6.22)	.209/(5.31)	.834/(21.18)	TAPE MOUNTED		
191420071	B-224-04XT	4	.119/(3.02)	.295/(7.49)	.211/(5.36)	.831/(21.11)			



- NOTES:
1. MATERIAL: COPPER .031/(.79) THICK.
 2. PLATING: ELECTRO-TIN.
 3. INSULATION: MOLDED PVC (BLUE)
 4. MWID=MAXIMUM WIRE INSULATION DIAMETER.

PRE-RELEASE
REFERENCE
USE ONLY

SALES DRAWING

THIS DRAWING CONTAINS INFORMATION THAT IS PROPRIETARY TO MOLEX ELECTRONIC TECHNOLOGIES, LLC AND SHOULD NOT BE USED WITHOUT WRITTEN PERMISSION													
DIMENSION UNITS INCH/MM		SCALE 4:1		CURRENT REV DESC: OBSOLETE PART NUMBERS AS PER PCN#512131.				molex					
GENERAL TOLERANCES (UNLESS SPECIFIED)				EC NO: 72779		2022/10/06							
		MM	INCH	DRWN: ANIKES1		2022/11/29		SPACE TONGUE TERMINAL INSULKRIMP 200 SERIES					
4 PLACES		±	±	CHK'D: GGA		2022/11/29							
3 PLACES		±	±	APPR: GGA		2022/11/29		PRODUCT CUSTOMER DRAWING					
2 PLACES		±	±	INITIAL REVISION:		DOCUMENT NUMBER				DOC TYPE	DOC PART	REVISION	
1 PLACE		±	±	DRWN: HEB		1999/11/12		SD-19142-001		PSD	001	C1	
0 PLACES		±	±	APPR: RWD		1999/11/12							
ANGULAR TOL		±	°	THIRD ANGLE PROJECTION		DRAWING		SERIES		MATERIAL NUMBER		CUSTOMER	SHEET NUMBER
DRAFT WHERE APPLICABLE MUST REMAIN WITHIN DIMENSIONS				B-SIZE		19142		SEE TABLE		GENERAL MARKET		1 OF 1	