

PART NUMBER	REV	FIRST USED	TERMINATOR	FEED TYPE	DESCRIPTION
1339794-1	B		BENCH & LEADMAKER	MECH POST FEED	HD-I APPLICATOR
7-1339794-1	B		BENCH & LEADMAKER	MECH POST FEED	-1 AND SPARE PARTS
7-1339794-7	B				SPARE PARTS KIT

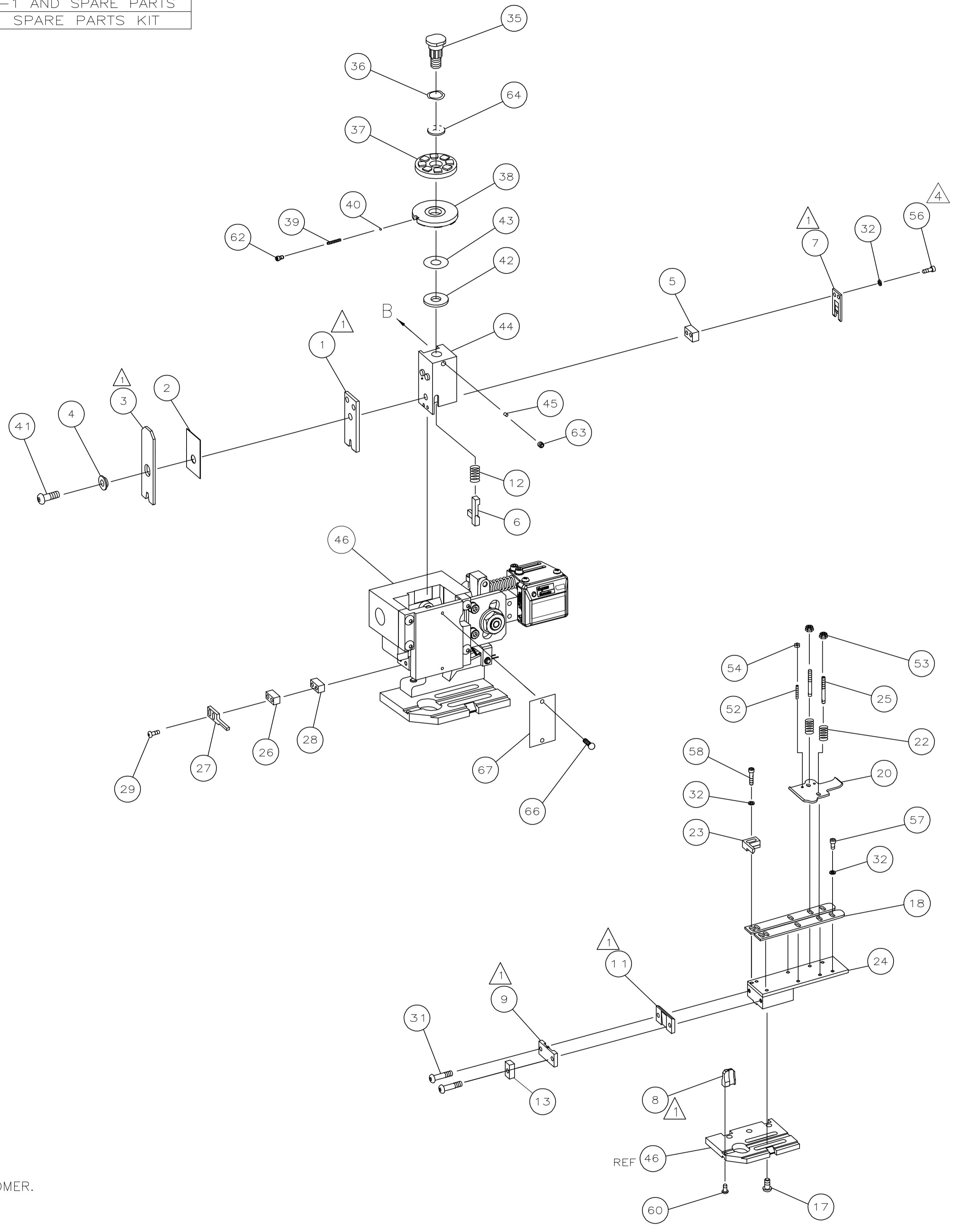
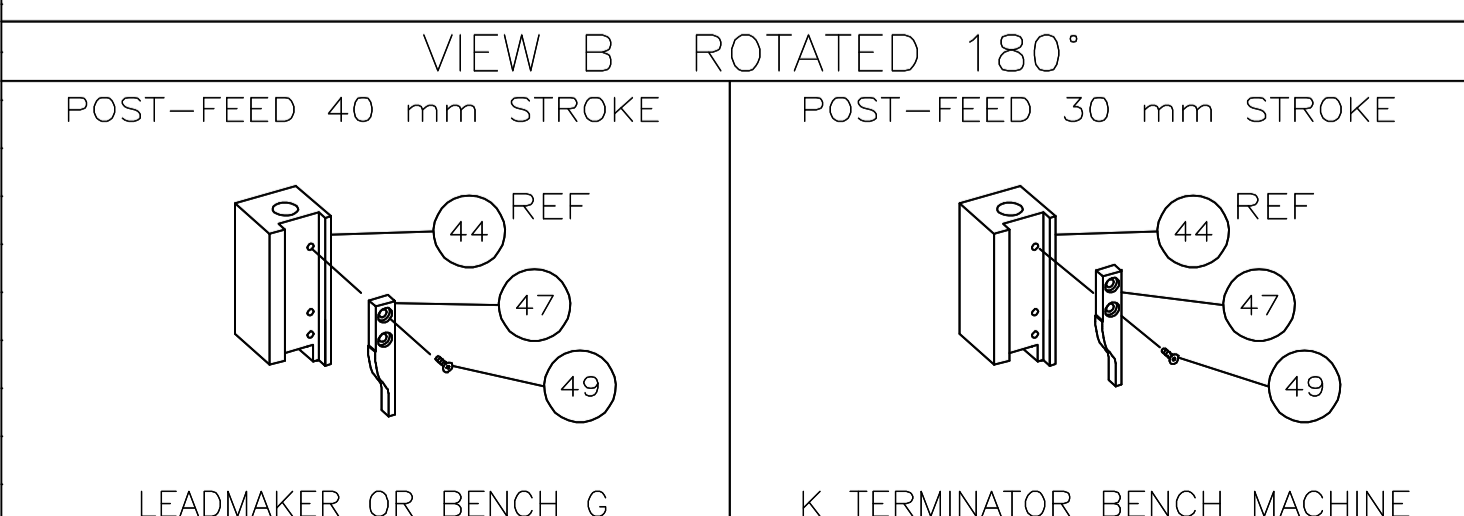
CRIMP DATA GENCO TERMINAL TYCO CRIMP SPECS			
TERMINAL NAME: FASTON 3.05 SIR EST			
CRIMP	SIZE	TYPE	RANGE
WIRE	1.78 [.070 IN]	F	0.50mm <sup>2</sup> - 1.00mm <sup>2</sup>
INSUL	2.79 [.110 IN]	F	1.80-2.40 [.071-.094 IN]
WIRE STRIP LENGTH		APPL INSTRUCTION	
3.90-4.70 [.154-.185 IN]		408-8323	
TERMINAL APPL SPEC	NONE		FEED 408-8323

TERMINALS APPLIED			
AMP PN	MFR PN		
1572831-1	1739BS-2	-	-
-	-	-	-
-	-	-	-
-	-	-	-
-	-	-	-
-	-	-	-
-	-	-	-
-	-	-	-
-	-	-	-

WIRE SIZE mm <sup>2</sup> AWG	CRIMP HEIGHT	PIN PN AND LENGTH [IN]
1.00mm <sup>2</sup>	1.26 ±0.05 [.050 ±.002 IN]	1-354779-9 [.3085]
0.75mm <sup>2</sup>	1.15 ±0.05 [.045 ±.002 IN]	3-354779-0 [.3140]
0.50mm <sup>2</sup>	1.03 ±0.05 [.041 ±.002 IN]	3-354779-9 [.3185]
-	-	-
-	-	-
-	-	-
-	-	-
-	-	-
-	-	-
-	-	-
-	-	-
-	-	-
-	-	-
-	-	-
-	-	-
-	-	-

SET UP GAGE 458638-3	LAYOUT L1339794
-------------------------	--------------------

- △ RECOMMENDED SPARE PARTS.
- 2. GREASE RAM, CAM, CAM FOLLOWER AND FEED ROD LIGHTLY.
- 3. LUBRICATE DAILY PER THE APPLICATOR INSTRUCTION SHEET SUPPLIED WITH THE APPLICATOR.
- △ CUT TO LENGTH AT ASSEMBLY.
- △ ALL CRIMP DATA CALCULATED BY TYCO ELECTRONICS UK LTD.
- △ WIRE AND INSULATION RANGE REQUESTED BY THE ORIGINAL CUSTOMER.



QTY REQD PER ASSY	REV	DESCRIPTION	ITEM NO		
			73		
-	1	1	1339794	PRINT, APPLICATOR LOG SHEET	72
-	1	1	1338705-2	DOCUMENTATION PACKAGE	71
					70
					69
					68
-	1	1	461264-1	PLATE, IDENTIFICATION	67
-	2	2	21017-2	SCR,DRIVE(#2X.19)ID PLATE	66
					65
-	1	1	986950-1	WASHER, FLAT PRECISION	64
-	1	1	3-18031-0	SCR,SKT SET(M6X6)RAM	63
-	1	1	18023-9	SCR,SKT CAP(M4X6)CP DSC	62
					61
-	1	1	18024-7	SCR,BHC(M4X10)ANVIL	60
					59
-	2	2	1-18023-3	SCR,SHC(M4X16)HOLD DOWN	58
-	5	5	18023-9	SCR,SHC(M4X6)STRIP GUIDE	57
-	2	2	1-18023-1	SCR,SHC(M4X10)SLUG BLADE	56
					55
-	2	2	18029-1	NUT,HEX(M3)DRAG	54
-	2	2	986965-1	NUT,HEX SL(M4)DRAG STUD	53
-	2	2	2-18032-2	SCR,SKT SET(M3X10)DRAG	52
					51
					50
-	1	1	18024-3	SCR,BHC(M3X10)CAM	49
					48
-	1	1	1338676-1	CAM, POST-FEED 30 & 40 mm ST	47
-	1	1	1338662-1	APPLICATOR, BASIC (SUBASSY)	46
-	1	1	690191-1	PLUG, NYLON	45
-	1	1	1320998-1	RAM	44
-	1	1	690125-1	WASHER, LAMINATED	43
-	1	1	690124-1	WASHER, RAM	42
-	1	1	2-18024-6	SCREW,BHC(M8X25)CRIMPER	41
-	1	1	23241-1	BALL, STEEL	40
-	1	1	2-22278-7	SPRING, COMPRESSION	39
-	1	1	1320922-1	DISC, INSULATION	38
-	1	1	354777-1	WIRE DISC, PLASTIC	37
-	1	1	22480-5	WASHER, SPRING	36
-	1	1	690212-1	POST, RAM	35
					34
					33
-	9	9	18025-2	WASHER,LOCK(M4)SHEAR BL	32
-	2	2	1-18024-0	SCR,BHC(M4X20)SHEAR PL	31
					30
-	2	2	18024-8	SCR,BHC(M4X12)STRIPPER	29
-	1	1	1-690451-7	SPACER, STRIPPER	28
-	1	1	240639-3	STRIPPER	27
-	1	1	1-690451-2	SPACER, STRIPPER	26
-	2	2	1320906-1	DRAG, STUD	25
-	1	1	1320995-1	PLATE, STRIP GUIDE	24
-	1	1	240825-1	PLATE, STRIP HOLD DOWN	23
-	2	2	4-22281-1	SPRING, DRAG	22
					21
-	1	1	1338665-1	DRAG, STOCK	20
					19
-	2	2	1338663-2	GUIDE, LOWER STRIP	18
-	4	4	1-18024-8	SCR,BHC(M6X12)STRIP GD PL	17
					16
					15
					14
-	1	1	690481-3	SPACER, HOLD DOWN	13
-	1	1	23846-1	SPRING, HOLD DOWN	12
-	1	1	240644-1	PLATE, REAR SHEAR	11
					10
-	1	1	690482-5	PLATE, FRONT SHEAR	9
1	2	1	3-1333215-0	ANVIL	8
-	1	1	690474-5	BLADE, SLUG	7
-	1	1	8-455892-3	HOLD DOWN, TERMINAL	6
-	1	1	3-240641-4	SPACER, SLUG BLADE	5
-	1	1	2-238009-3	SPACER, BLOCK CRIMPER	4
1	2	1	8-456134-7	CRIMPER, INSULATION	3
-	1	1	455888-8	SPACER, CRIMPER	2
1	2	1	1-456404-8	CRIMPER, WIRE	1
-77	-71	-1	PART NO	DESCRIPTION	ITEM NO

THIS DRAWING IS A CONTROLLED DOCUMENT.		DIN L LOFHOUSE 130CT05	Tyco Electronics Corporation Harrisburg, PA 17105-3608	
DIMENSIONS: INCHES	TOLERANCES UNLESS OTHERWISE SPECIFIED:	APVD F BACKHURST 130CT05	NAME: END FEED HD-I APPLICATOR	
0 PLC ± .005	1 PLC ± .005	PRODUCT SPEC	SIZE: A1	
2 PLC ± .005	3 PLC ± .005	APPLICATION SPEC	CAGE CODE: 00779	
4 PLC ± .005	ANGLES ± .005	FINISH	DRAWING NO: 1339794	
MATERIAL		WEIGHT	RESTRICTED TO	
			CUSTOMER DRAWING	
			SCALE: 1 OF 1 REV B	