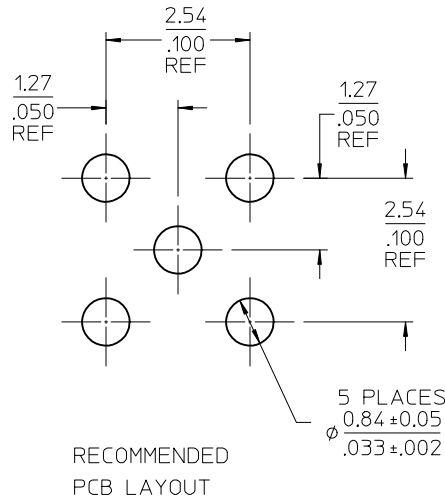
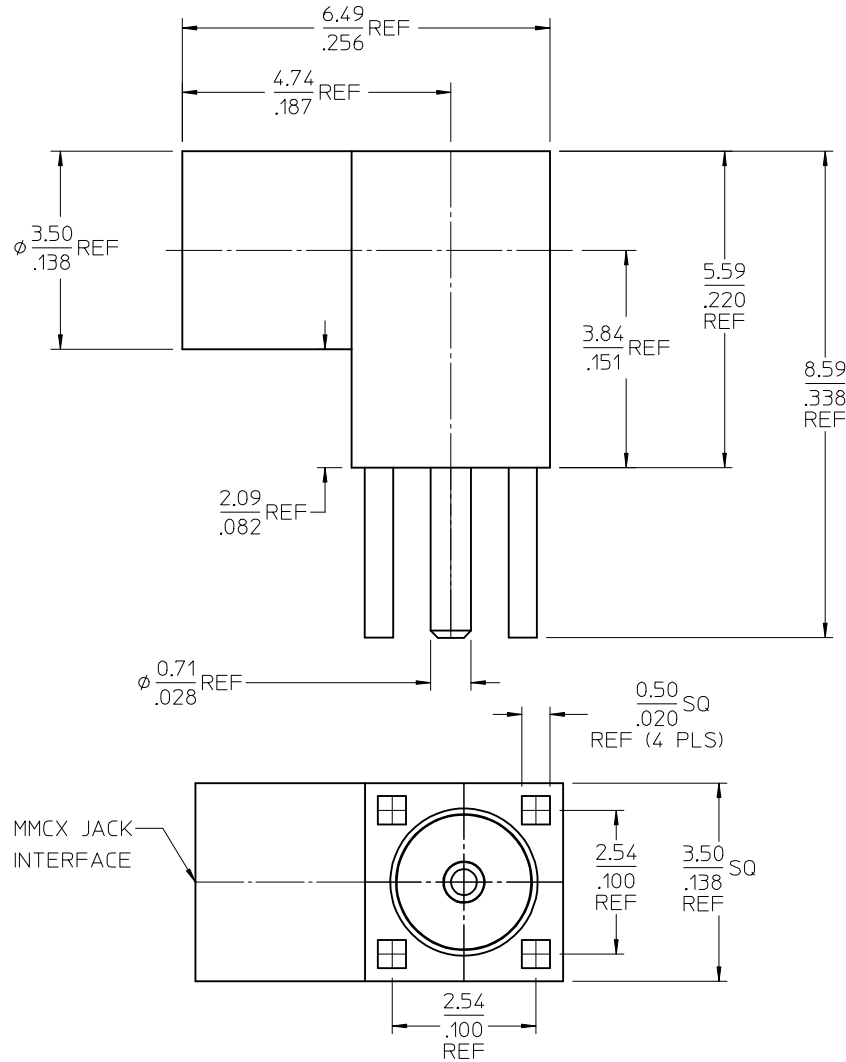
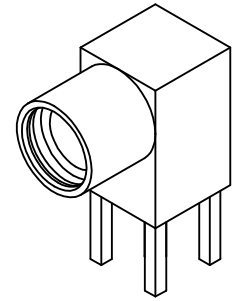


MATERIALS AND FINISHES

BODY BRASS
PLATED GOLD ,SEE TABLE

CENTER CONTACT BERYLLIUM COPPER
PLATED GOLD , SEE TABLE

INSULATOR TEFLON



RECOMMENDED
PCB LAYOUT

ES-73599-0000-016	INTERFACE
SPECIFICATION	DESCRIPTION

73415-5262	OCNTACT PIN GOLD 1~3u", BODY GOLD 1u"
73415-5261	OCNTACT PIN GOLD 30u", BODY GOLD 1~3u"
PART NO.	DESCRIPTION

UNLESS OTHERWISE SPECIFIED DIMS ARE MILLIMETERS AND ANGLES ARE DEGREES.

- ALL OVER.
- NO CHATTER OR NON-UNIFORM SURFACE FINISH ALLOWED.
- PARTS TO BE FREE OF BURRS & SHARP EDGES 0.13(.005) MAX BREAK.
- EXTERNAL THREADS TO BE ROLLED OR SINGLE POINT.
- DIAMETERS TO BE CONCENTRIC WITHIN 0.08(.003) TIR.

CHG: MODIFIED	QUALITY SYMBOLS
INSULATORS	▽=0
EC NO: URF2013-0055	▽=0
DRWN:YCHENG	
CHKD:	
APPR:MHUANG	
DESCRIPTION	
D1	

GENERAL TOLERANCES (UNLESS SPECIFIED)
4 PLACES ± .005
3 PLACES ± .004
2 PLACES ± .003
1 PLACE ± .002
ANGULAR ± 2°
DRAFT WHERE APPLICABLE MUST REMAIN WITHIN DIMENSIONS

DIMENSION STYLE	SCALE
MM/IN	METRIC
DRAWN BY	DATE
SSS	2008/02/28
CHECKED BY	DATE
TEF	2008/02/28
APPROVED BY	DATE
GMH	2008/02/28
MATERIAL NO.	DOCUMENT NO.
SEE TABLE	SD-73415-526
SIZE	SHEET NO.
C	1 OF 1

THIRD ANGLE PROJECTION

**MMCX JACK, R/A, PCB
50 OHMS, EWR-2734
MMCX-J/PCB**

MOLEX INCORPORATED

THIS DRAWING CONTAINS INFORMATION THAT IS PROPRIETARY TO MOLEX INCORPORATED AND SHOULD NOT BE USED WITHOUT WRITTEN PERMISSION