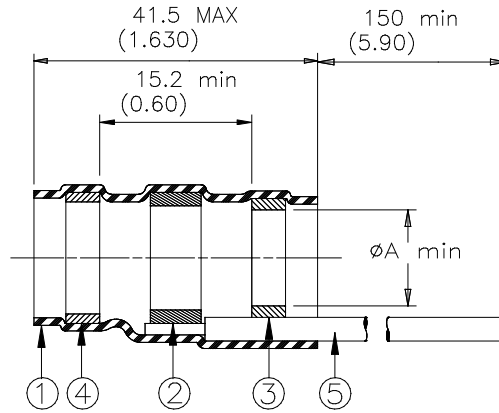


# CUSTOMER DRAWING



Product Name	Product Dimensions	Cable Dimensions		
	$\phi A$ min	$\phi B$ max	$\phi C$ min	$\phi D$ min
CWT-3811-W5	10.7 (0.420)	10.7 (0.420)	7.1 (0.280)	6.6 (0.260)

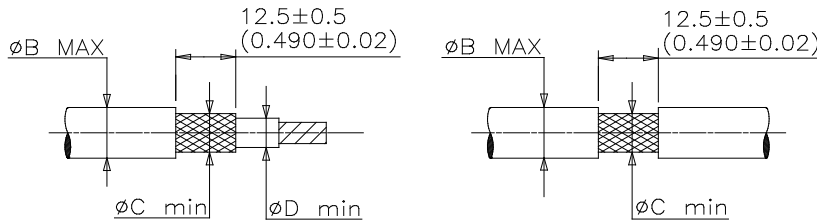
## MATERIALS

- INSULATION SLEEVE: Heat-shrinkable, transparent clear, radiation cross-linked modified polyolefin.
- SOLDER PREFORM WITH FLUX:  
SOLDER: TYPE Cd18 per ANSI-J-STD-006.  
FLUX: TYPE ROM1 per ANSI-J-STD-004.
- MELTABLE RING: Thermally stabilized thermoplastic. Color:clear.
- MELTABLE RING: Thermally stabilized thermoplastic. Color:blue.
- GROUND LEAD: MIL-W-81822/13 AWG26 solid silver plated copper. Color:blue.


## APPLICATION

- These controlled soldering devices are designed for termination of bare or tin plated copper shield on a cable having an insulation rated for at least +85°C.
- Temperature range: -55°C to +125°C. For installation procedure and application equipment, consult RPIP-824-00.

For best results, prepare the cable as shown:



TE Connectivity, TE connectivity (logo), Raychem, Thermofit, and SolderSleeve are trademarks

		<b>Raychem</b> THERMOFIT DEVICES		TITLE: <b>SOLDERSLEEVE ONE STEP SHIELD TERMINATION LOW TEMPERATURE</b>	
UNLESS OTHERWISE SPECIFIED DIMENSIONS ARE IN MILLIMETERS. INCHES DIMENSIONS ARE BETWEEN BRACKETS.				DOCUMENT NO.: CWT-3811-W5	
TOLERANCES: 0.00 N/A 0.0 N/A 0 N/A	ANGLES: N/A  ROUGHNESS IN MICRON	TE Connectivity reserves the right to amend this drawing at any time. Users should evaluate the suitability of the product for their application.		Revision: <b>A</b>	Issue Date: April 2020
DRAWN BY: <b>M. FORONDA</b>	DATE: <b>06/15/98</b>	ECO: <b>ECO-20-004961</b>	SCALE: None	SIZE: A	SHEET: 1 of 1