

ITEM	PART#	DESCRIPTION	QTY	UOM
A,B	9508080	KK 156 Crimp Housing 08 Ckt	2	PC
C	8500105	KK 156 TERMINAL CRIMP 18-24 AWG TIN	16	PC
D		PAPER PRINTED PAPER WHITE	1	PC

FROM	TO	DESCRIPTION	COLOR
A1	B8	1X18AWG MPPE BK UL11028	BLACK
A2	B7	1X18AWG MPPE BK UL11028	BLACK
A3	B6	1X18AWG MPPE BK UL11028	BLACK
A4	B5	1X18AWG MPPE BK UL11028	BLACK
A5	B4	1X18AWG MPPE BK UL11028	BLACK
A6	B3	1X18AWG MPPE BK UL11028	BLACK
A7	B2	1X18AWG MPPE BK UL11028	BLACK
A8	B1	1X18AWG MPPE BK UL11028	BLACK

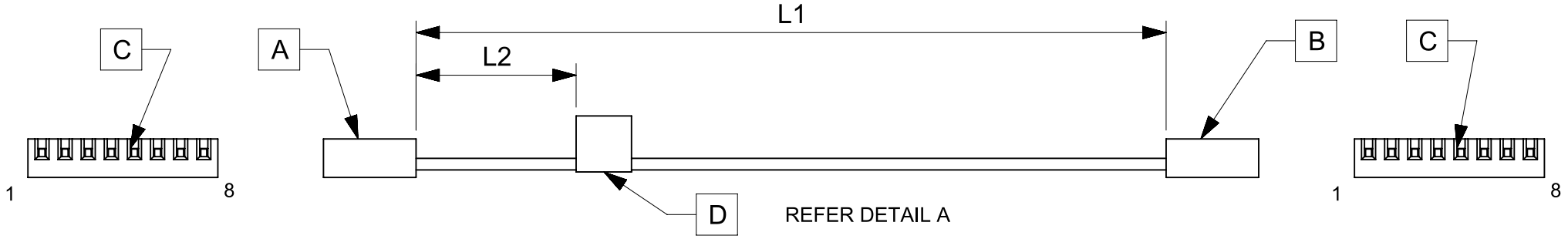


TABLE			
PART NUMBER	L1	L2 (REF)	TITLE
2196641082	150±4	50	KK 3.96 R-R 8ckt 150mm disc Sn
2196641083	300±4	50	KK 3.96 R-R 8ckt 300mm disc Sn
2196641084	600±6	50	KK 3.96 R-R 8ckt 600mm disc Sn

- NOTES**
1. Cable assembly must pass 100% continuity and polarity test.
  2. Connector view shown is from mating side.
  3. Label text must be 2mm max. in height with Arial font.
  4. Label must be wrapped in Flag type on a single cable.

MOLEX P/N  
MOLEX  
BATCH WK/YR  
DETAIL A

REVISION			
DATE	REV	DESCRIPTION	CHANGER
2021/12/27	A	INITIAL RELEASE	SAIKIG

FUNCTIONAL SYMBOLS $\frac{F}{A} = 0$ $\frac{F}{E} = 0$ $\frac{F}{P} = 0$ DIVISIONAL SYMBOLS	THIS DRAWING CONTAINS INFORMATION THAT IS PROPRIETARY TO MOLEX ELECTRONIC TECHNOLOGIES, LLC AND SHOULD NOT BE USED WITHOUT WRITTEN PERMISSION		CURRENT REV DESC:			
	DIMENSION UNITS	SCALE	GENERAL TOLERANCES (UNLESS SPECIFIED)			
	mm	NTS	ANGULAR TOL ± °			
	4 PLACES ±		3 PLACES ±			
3 PLACES ±		2 PLACES ±		EC NO: 691733	PRODUCT CUSTOMER DRAWING DOCUMENT NUMBER: 2196641082 DOC TYPE: PSD DOC PART: 000 REVISION: A	
2 PLACES ±		1 PLACE ±		DRWN: SAIKIG 2021/12/29		
1 PLACE ±		0 PLACES ±		CHK'D: MNARAYAN01 2022/01/19		
0 PLACES ±		DRAFT WHERE APPLICABLE MUST REMAIN WITHIN DIMENSIONS		APPR: MNARAYAN01 2022/01/19		
THIRD ANGLE PROJECTION		DRAWING	SERIES	MATERIAL NUMBER	CUSTOMER	SHEET NUMBER
		A4-SIZE	219664	SEE TABLE	GENERAL MARKET	1 OF 1