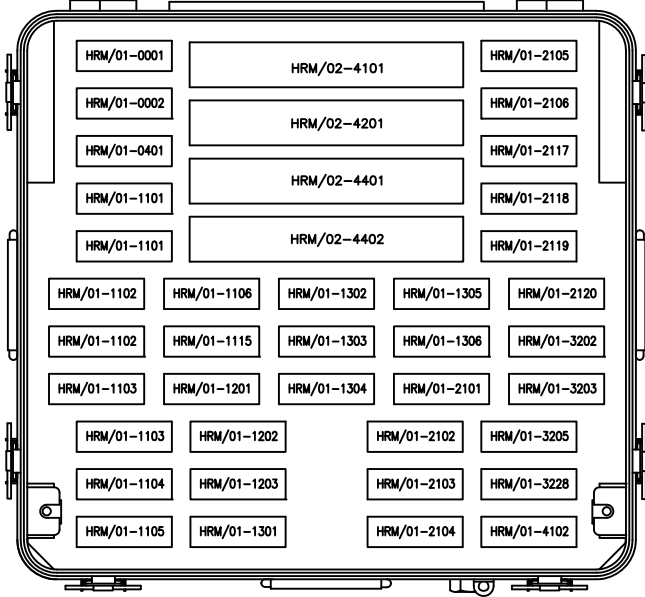
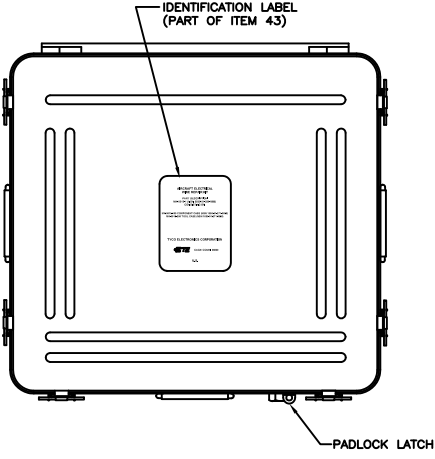
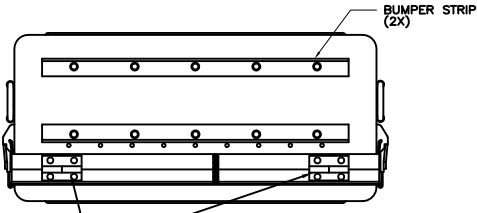


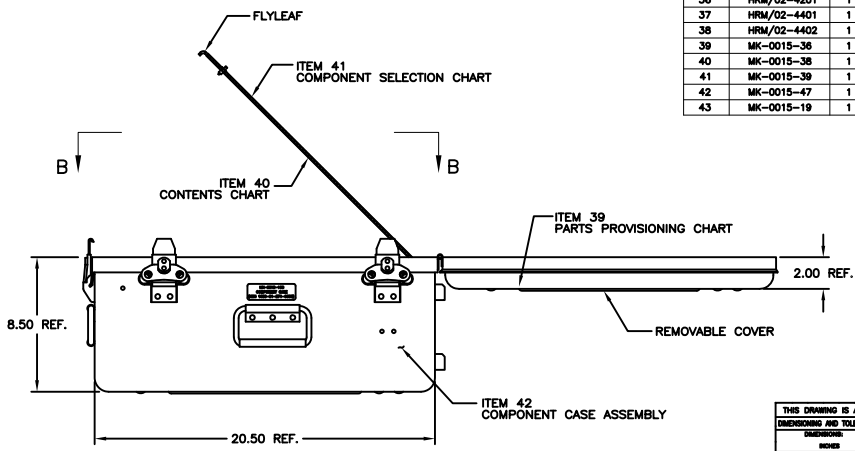
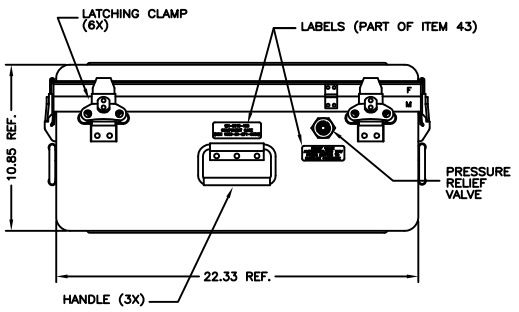
THE DRAWING IS UNCONTROLLED IF:
 (C) COPYRIGHT 2015 BY THE COMPANY
 RELEASED FOR PUBLICATION
 ALL RIGHTS RESERVED

REV		REVISIONS			
NO.	DATE	BY	DESCRIPTION	DATE	APP'D
A			INITIAL RELEASE PER ECO-12-007038	04/13/2012	YUN LR



VIEW B-B
 ROTATED 90° COUNTER CLOCKWISE
 (FLYLEAF REMOVED FOR CLARITY)

PARTS LIST			
ITEM NO.	TE PART DESCRIPTION	QTY	DESCRIPTION
1	HRM/01-0001	1	SELF CLINCHING CABLE STRAP MS3367-1-0
2	HRM/01-0002	1	TERMINAL BOARD MS27212-1-B
3	HRM/01-0401	1	DATA BUS CABLE, SIZE 22
4	HRM/01-1101	2	SEALED CRIMP SPLICE FOR SIZES 20-22-24-26 HIGH TEMPERATURE WIRE
5	HRM/01-1102	2	SEALED CRIMP SPLICE FOR SIZES 16-18-20 HIGH TEMPERATURE WIRE
6	HRM/01-1103	2	SEALED CRIMP SPLICE FOR SIZES 12-14-16 HIGH TEMPERATURE WIRE
7	HRM/01-1104	1	SEALED CRIMP SPLICE FOR SIZES 20-22-24-26 LOW TEMPERATURE WIRE
8	HRM/01-1105	1	SEALED CRIMP SPLICE FOR SIZES 16-18-20 LOW TEMPERATURE WIRE
9	HRM/01-1106	1	SEALED CRIMP SPLICE FOR SIZES 12-14-16 LOW TEMPERATURE WIRE
10	HRM/01-1115	1	SPLIT BOLT SPLICE CONNECTOR FOR SIZES 4-6-8-10 WIRE
11	HRM/01-1201	1	SPLICE FOR SHIELDED WIRE SIZES 20-22-24-26
12	HRM/01-1202	1	SPLICE FOR SHIELDED WIRE SIZES 16-18-20
13	HRM/01-1203	1	SPLICE FOR SHIELDED WIRE SIZES 12-14-16
14	HRM/01-1301	1	SPLICE FOR COAXIAL CABLES RG-179B/U, RG-316/U
15	HRM/01-1302	1	SPLICE FOR COAXIAL CABLE RG-180B/U
16	HRM/01-1303	1	SPLICE FOR COAXIAL CABLES RG-124/U, RG-142B/U, RG-302/U, RG-303/U
17	HRM/01-1304	1	SPLICE FOR COAXIAL CABLES RG-06/U, RG-214/U, RG-225/U, RG-393/U
18	HRM/01-1305	1	SPLICE FOR COAXIAL CABLES RG-58C/U, RG-223/U
19	HRM/01-1306	1	SPLICE FOR COAXIAL CABLES RG-59B/U, RG-71B/U
20	HRM/01-2101	1	TERMINAL LUGS FOR SIZE 24 WIRE M7928/1-7, -8, -9, -10
21	HRM/01-2102	1	TERMINAL LUGS FOR SIZE 22 WIRE M7928/1-12, -14, -15, -16
22	HRM/01-2103	1	TERMINAL LUGS FOR SIZE 20 WIRE M7928/1-21, -23, -24, -25
23	HRM/01-2104	1	TERMINAL LUGS FOR SIZE 18 WIRE M7928/1-30, -32, -33, -34
24	HRM/01-2105	1	TERMINAL LUGS FOR SIZE 16 WIRE M7928/1-39, -41, -42, -43
25	HRM/01-2106	1	TERMINAL LUGS FOR SIZE 14 WIRE M7928/1-48, -50, -51, -52
26	HRM/01-2117	1	SEALING PLUGS M2748B CONNECTOR CONTACTS M39029/1, /69, /70, CNS, WTK, 031
27	HRM/01-2118	1	CONNECTOR CONTACTS M39029/22, /30, /56, /58
28	HRM/01-2119	1	CONNECTOR CONTACTS M39029/4, /5, /28, /57, /63, /64
29	HRM/01-2120	1	CONNECTOR CONTACTS M39029/16, /18, /31, /32 AND M28604/9, /10
30	HRM/01-3202	1	SHIELD TERMINATOR WITH GROUND WIRE M83519/2-7
31	HRM/01-3203	1	SHIELD TERMINATOR WITH GROUND WIRE M83519/2-8
32	HRM/01-3205	1	SHIELD TERMINATOR WITH GROUND WIRE M83519/2-10
33	HRM/01-3228	1	TERMINATORS FOR NICKEL PLATED SHIELD INCLUDING VERMILLION
34	HRM/01-4102	1	MTC FLAT CONNECTOR WAFERS WITH ROUND WIRE CABLE SEGMENTS
35	HRM/02-4101	1	PRIMARY WIRE REPAIR SEGMENTS SIZES 20, 16, 12
36	HRM/02-4201	1	SHIELDED WIRE REPAIR SEGMENTS SIZES 20, 16, 12
37	HRM/02-4401	1	DATA BUS REPAIR COMPONENTS TRIAXIAL PLUGS AND JACKS, CABLE SEGMENTS
38	HRM/02-4402	1	DATA BUS REPAIR COMPONENTS COUPLERS, TERMINATORS, CABLE SEGMENTS
39	MK-0015-36	1	PARTS PROVISIONING CHART
40	MK-0015-38	1	CONTENTS CHART
41	MK-0015-39	1	COMPONENT SELECTION CHART
42	MK-0015-47	1	COMPONENT CASE ASSEMBLY
43	MK-0015-19	1	CASE LABEL SET



If this document is printed it becomes uncontrolled. Check for the latest revision

Raychem Devices
 CUSTOMER DRAWING

STE TE Connectivity

AIRCRAFT ELECTRICAL WIRE REPAIR KIT
 DAAJ09-90-C-1102
 NSN 1680-01-271-0650

PART NUMBER: 254033-000
 SIZE: A1
 ONE USE ONLY (UNLESS OTHERWISE SPECIFIED)
 NONE

THIS DRAWING IS A CONTROLLED DOCUMENT. UNCLASSIFIED
 DIMENSIONS AND TOLERANCES PER ASME Y14.5-2009
 UNLESS OTHERWISE SPECIFIED

DATE: 04/13/2012
 BY: YUN LR