

REVISIONS					
ZONE	REV	DESCRIPTION	DATE	BY	APPRVD:
ZONE	1	INITIAL RELEASE	6-6-07	DMG	CLL
B7	2	Added comment to optional etch or stamp "302" or "304" if material is SS302 or SS304	4-23-08	DMG	CLL
B7	3	See ECO 1011	3-19-09	DMG	CLL
D1	4	See ECO 1025	3-6-12	DMG	CLL
B3	5	See ECO 1026 - CHANGED TOLERACNE FOR THICKNESS	6-9-12	DGS	CLL
B3	6	See ECO 1030 - CHANGED TOLERACNE FOR THICKNESS	12-11-12	DMG	CLL
B7	7	See ECO 1041 - Newly developed Geometry, changed marking information and added barcode	6-08-15	DMG	JW

PRINT APPROVAL

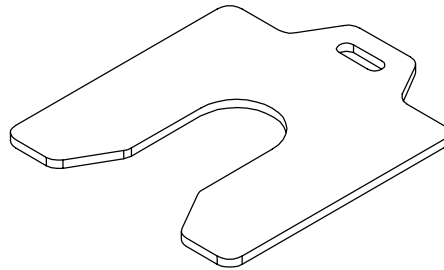
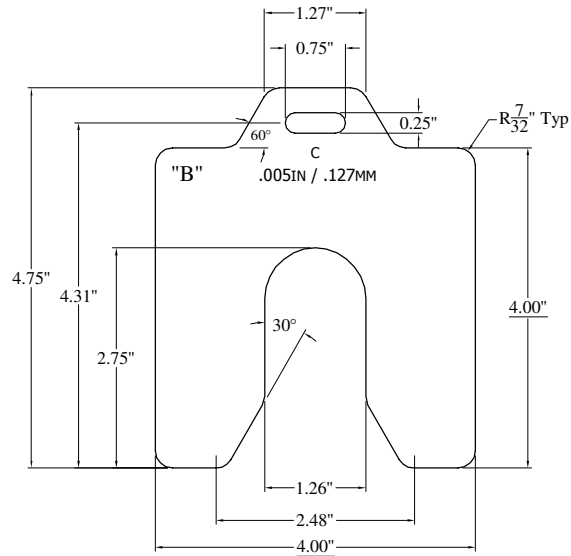
MAUDLIN PRODUCTS

CUST#: SHIM

DWG#: MSC-XXX REV: 7

BY: DAGO GARZA DATE: 6-08-15

THK.	TOL.	P/N 316SS.	P/N 302/304 SS.	P/N STEEL	FLATNESS.	ALLOWABLE BURR
.001	± .00008	316-MSC001.	MSC001.	—————	N/A	.0005
.002	± .0001	316-MSC002.	MSC002.	—————	N/A	.0005
.003	± .00015	316-MSC003.	MSC003.	—————	N/A	.0005
.004	± .0002	316-MSC004.	MSC004.	—————	N/A	.0005
.005	± .00025	316-MSC005.	MSC005.	—————	N/A	.0005
.006	± .0003	316-MSC006.	MSC006.	—————	N/A	.001
.007	± .00035	316-MSC007.	MSC007.	—————	N/A	.001
.008	± .0004	316-MSC008.	MSC008.	—————	N/A	.001
.009	± .00045	316-MSC009.	MSC009.	—————	N/A	.001
.010	± .0005	316-MSC010.	MSC010.	—————	N/A	.001
.012	± .0006	316-MSC012.	MSC012.	—————	N/A	.001
.015	± .0005	316-MSC015.	MSC015.	—————	N/A	.001
.020	± .0005	316-MSC020.	MSC020.	—————	N/A	.001
.025	± .00075	316-MSC025.	MSC025.	—————	N/A	.001
.031	± .004	316-MSC031.	MSC031.	—————	N/A	.002
** .050	± .001	316-MSC050.	MSC050.	—————	± .015	.002
** .062	± .006	316-MSC062.	MSC062.	—————	± .015	.002
** .075	± .002	316-MSC075.	MSC075.	—————	± .015	.002
** .100	± .002	316-MSC100.	MSC100.	—————	± .015	.002
** .125	± .0025	316-MSC125.	MSC125.	—————	± .015	.002
$\frac{3}{16}$ "	± .010	—————	MSC-187-SS.	MSC-187-S	± .015	.005
$\frac{1}{4}$ "	± .012	—————	MSC-250-SS.	MSC-250-S	± .015	.005
$\frac{3}{8}$ "	± .020	—————	MSC-375-SS.	MSC-375-S	± .015	.005
$\frac{1}{2}$ "	± .025	—————	MSC500-SS.	MSC-500-S	± .015	.005
$\frac{5}{8}$ "	± .030	—————	MSC-625-SS.	MSC-625-S	± .015	.005
$\frac{3}{4}$ "	± .035	—————	MSC-750-SS.	MSC-750-S	± .015	.005
1"	± .050	—————	MSC-100-SS.	MSC-100-S	± .015	.005



NOTE:

1. "***" = For 316 material, STD gauge thickness applies (±.006")
2. "B" = If 316 Shim, Etch or Stamp "316" Here.
3. Mark shim with shim size, thickness in standard and metric.

UNLESS OTHERWISE SPECIFIED, ALL DIMENSIONS ARE IN INCHES, AND TOLERANCES SHALL BE:	DWG TYPE	DETAIL - PART		
	SIGNATURES	DATE	MO-DA-YR	
.0 = ±.030"	DMG	6-8-15		CUSTOMER: Maudlin & Son Mfg.
.00 = ±.015"				PART NUMBER: See Table
.000 = ±.005"				DESCRIPTION: MSC Shims
Fractions = $\pm \frac{1}{16}$ "				DWG No.: MSC-XXX
Angular = ±30min				REVISION 7
MATL: See Table				SCALE: 1:1
THK: See Table	THIRD ANGLE PROJECTION			SIZE
				SHEET 1 of 1