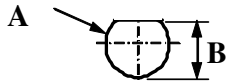
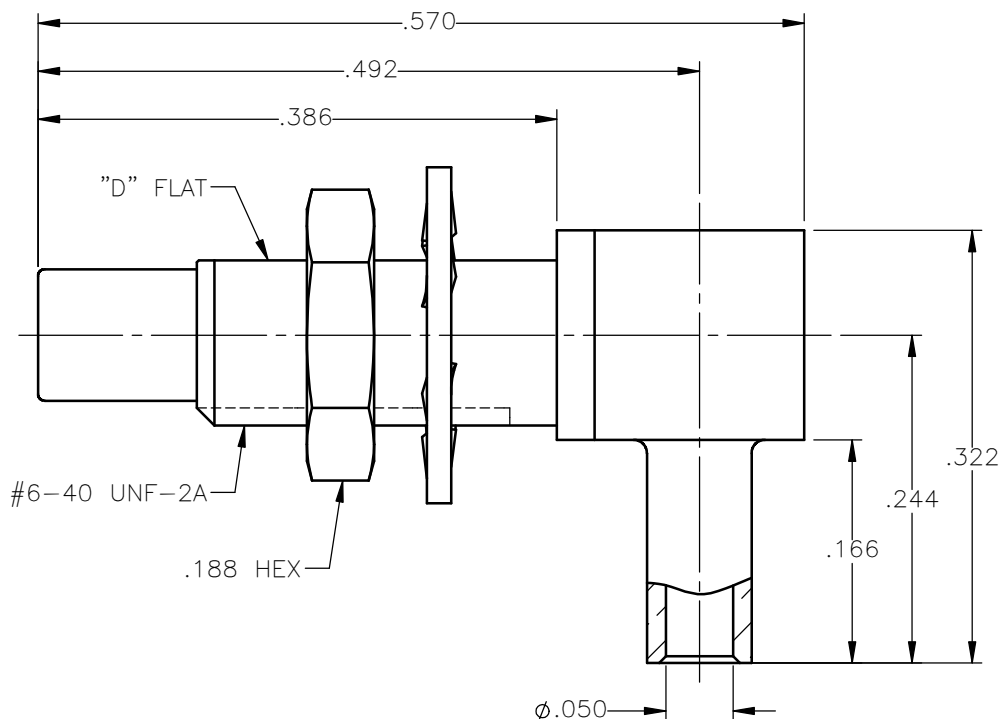


**PANEL CUT OUT**



inches		
	Maxi	mini
<b>A</b>	<b>.143</b>	<b>.140</b>
<b>B</b>	<b>.129</b>	<b>.126</b>

REVISIONS			
REV.	DESCRIPTION	DATE	APPROVED
A	INITIAL RELEASE	07/03/18	D.N.



NOTES:

MATERIALS:

1. INSULATORS = VIRGIN WHITE TEFLON PER ASTM D1710, GRADE 1, TYPE I, CLASS "B".
2. CONTACT = BERYLLIUM COPPER PER ASTM B196, ALLOY C17300, TEMPER TD04.
3. LOCKWASHER = PHOSPHOR BRONZE PER ASTM B139, COPPER ALLOY C53400, TEMPER H04.
4. ALL OTHER METAL PARTS = BRASS PER ASTM B16, ALLOY C36000, TEMPER H02.

FINISHES:

1. CONTACT = GOLD PLATE PER ASTM B488-11, TYPE II, 50µin MIN, GRADE C, OVER 100 TO 200µin STRESS FREE SULFAMATE NICKEL PER AMS-QQ-N-290.
2. ALL OTHER METAL PARTS = GOLD PLATE PER ASTM B488-11, TYPE II, 30µin MIN, GRADE C OVER 100 TO 200µin COPPER STRIKE PER AMS 2418.

UNLESS OTHERWISE SPECIFIED DIMENSIONS ARE IN INCHES TOLERANCES ON

DWN:	DATE
D.N.	07/03/18
CHKD:	DATE
C.E.	07/03/18
APVD:	DATE
J.M.	07/03/18



Property of Radiall  
This document cannot be reproduced or communicated to a third party without prior written permission of RADIALL.



SSMC RIGHT ANGLE JACK  
DIRECT SOLDER TYPE  
FOR .047 S/R & SIMILAR CABLES

REFERENCE:

ORIGINATED: D.N.  
DATE: 07/03/18

MATERIALS & FINISHES:  
SEE NOTES

SIZE	FSCM NO.	DWG NO.	REV
A	19505	7106-1561-011	A
SCALE	THIRD ANGLE PROJECTION		SHEET 1 OF 1
7:1			

7106-1561-011