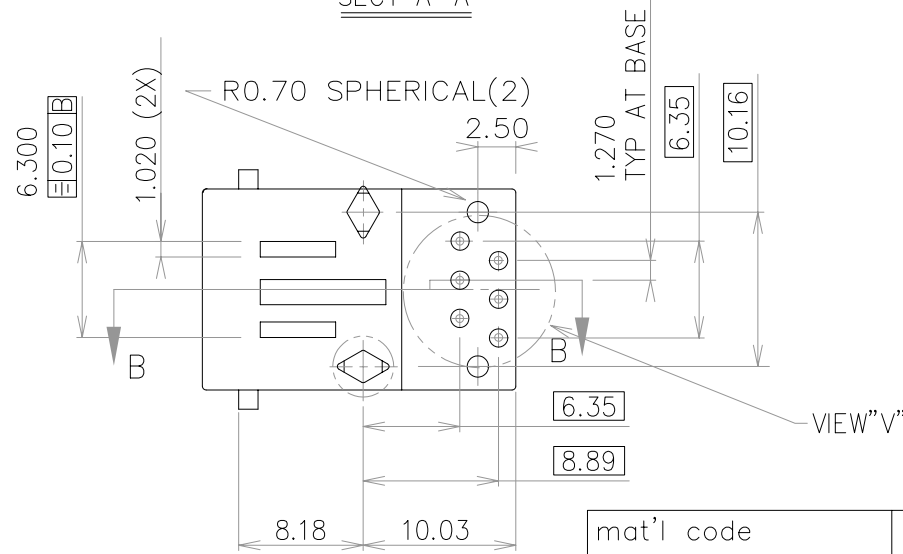
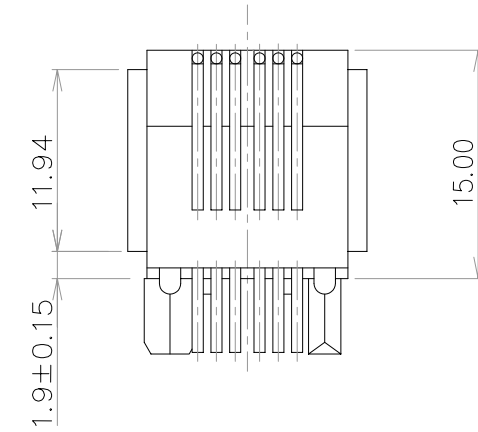
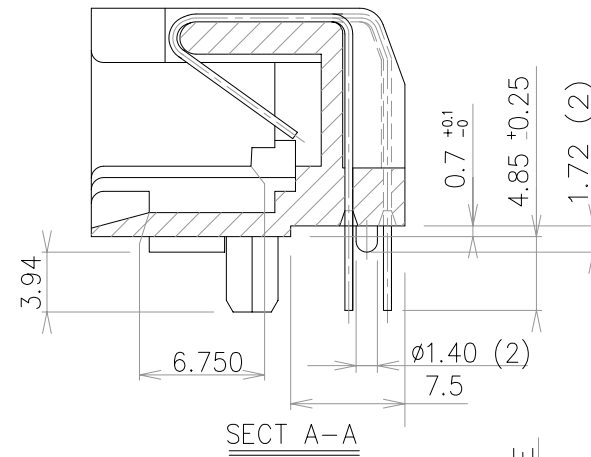
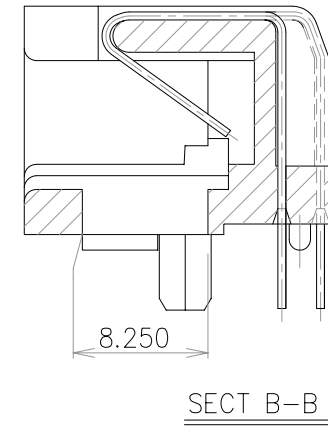
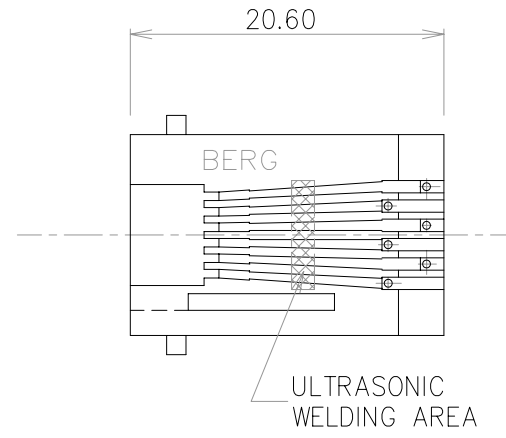
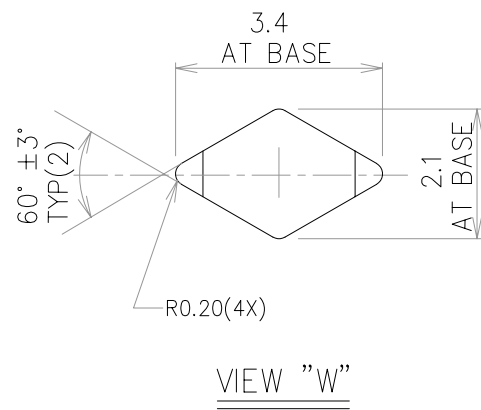
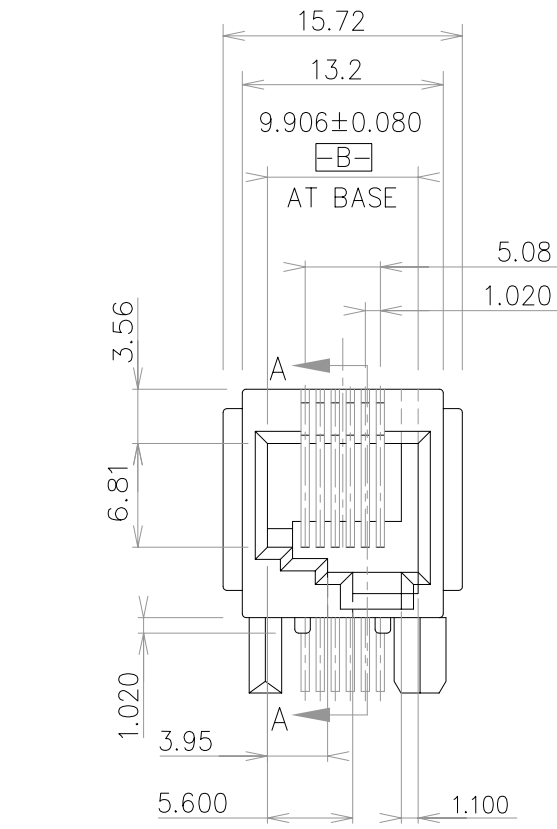


Tous droits strictement réservés. Reproduction ou communication à des tiers sans autorisation écrite du propriétaire. Propriété de c BERG ELECTRONICS. Droits de reproduction BERG ELECTRONICS by



All rights strictly reserved. Reproduction or issue to third parties in any form whatsoever is not permitted without written authority from the proprietor. Property of c BERG ELECTRONICS. Copyright BERG ELECTRONICS by



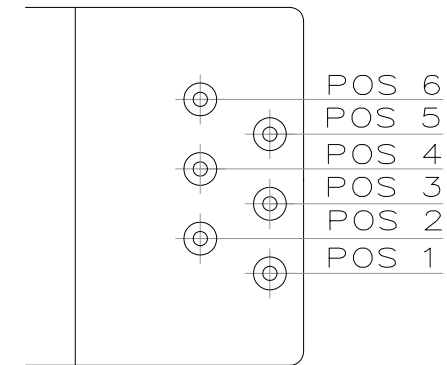
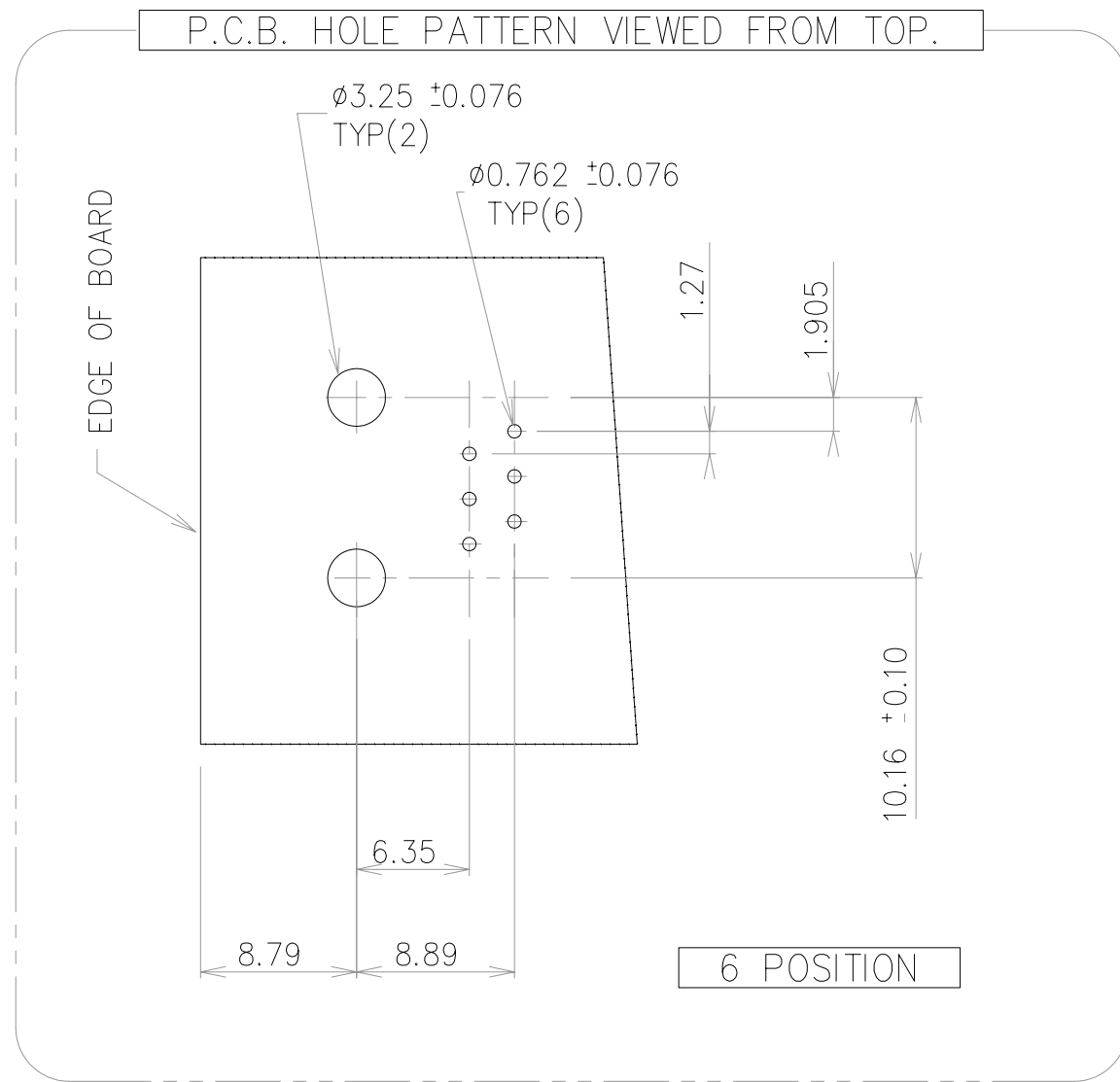
mat'l code				tolerance unless otherwise specified		CUSTOMER COPY	FCI www.fciconnect.com		
rev.	ecn no.	dr	date	linear	.0 ± 0.25	projection	title SNAP-IN MODULAR JACK ASS'Y 6-POS OFF-SET OPENING		
A	T40014	-	-		.00 ± 0.13				
B	H40194	-	03/18/94	angles	.000 ± 0.05	unit	product family		
C	T70043	CL	01/16/97		± 2°				
D	T03-0443	WL	10/06/03	dr	KCHOU	01/26/94	size	code	
E	N05-0019	YS	01/27/05	enr	TONY CHIEN	01/26/94	dwg no.	-	
F	I09-0017	NPM	26/05/09	chr	NEBU PM	25/08/09	scale	sheet	
				appd	SUDHIR V	25/08/09	2:1	1 OF 2	
sheet	revision	F	F						
index	sheet	1	2						

Tous droits strictement réservés. Reproduction ou communication à des tiers interdite sans la permission écrite du propriétaire. Property of c BERG ELECTRONICS. Droits de reproduction BERG ELECTRONICS by



All rights strictly reserved. Reproduction or issue to third parties in any form without written authority from the proprietor. Property of c BERG ELECTRONICS. Copyright BERG ELECTRONICS by

PRODUCT NUMBER	NUMSER OF POS.	LOADED POSITIONS	CONTACT PLATING
94729-002/-002LF	6	1,2,3,4,5,6	2μ" GOLD FLASH
94729-102/-102LF	6	1,2,3,4,5,6	30μ" GXT PLATED



POSITION NUMBER INDICATED (VIEW "V")

NOTES:

1. RECOMMENDED P.C.B THICKNESS 1.60 MM
2. HOUSING MAT'L: POLYESTER 30% G.F, COLOR: CREAM WHITE
3. CONTACTS: PHOS BRONZE ALLOY UNS-C51000, Ø0.460mm ROUND WIRE PLATING SEE TABLE.
4. THE PRODUCT MEETS EUROPEAN UNION DIRECTIVES AND OTHER COUNTRY REGULATIONS AS DESCRIBED IN GS-22-008
5. THE HOUSING WILL WITHSTAND EXPOSURE TO 260°C PEAK.
6. IF LF P/N PACKING MEETS GS-14-920 SPECIFICATION.

mat'l code				tolerance unless otherwise specified		CUSTOMER COPY		 www.fciconnect.com	
rev.	ecn no.	dr	date	linear	.0 ± 0.25	projection		title SNAP-IN MODULAR JACK ASS'Y 6-POS OFF-SET OPENING	
F					.00 ± 0.13				
					.000 ± 0.05				
				angles	± 2°				
				dr	KCHOU	01/26/94	unit	product family	
				enr	TONY CHIEN	01/26/94	mm/inch	size	code
				chr	NEBU P.M	25/08/09	scale	dwg no.	-
				appd	SUDHIR V.	25/08/09	A3	94729	sheet
sheet	revision	F	F						2 OF 2
index	sheet	1	2						