



PART NUMBER: FLH - SX1 - XX - X

SERIES
FLH

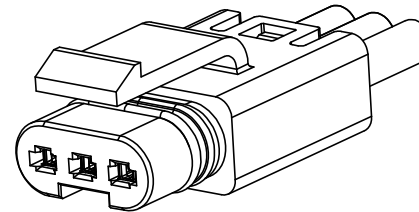
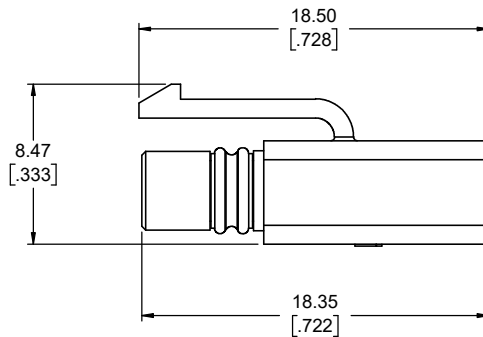
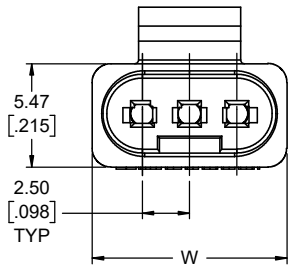
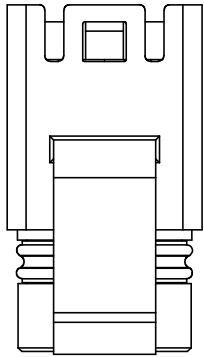
SOCKET HOUSING TYPE
S1 = 1 CONTACT
S2 = 2 CONTACTS
S3 = 3 CONTACTS
S4 = 4 CONTACTS
S5 = 5 CONTACTS
S6 = 6 CONTACTS

IDENTIFIER
XX = 00 FOR STANDARD
= 01-99 FOR OTHER OPTIONS

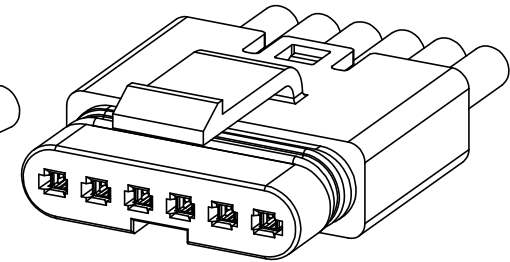
OTHER FEATURES
LEAVE BLANK FOR STANDARD
0 TO 9 FOR OTHER OPTIONS

SOCKET HOUSING	W (mm)
S1	
S2	10.30
S3	
S4	
S5	17.80
S6	

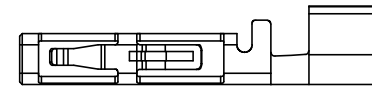
REVISIONS			
REV	DESCRIPTION, ECN, EAR NO.	DATE	APP'D
P	PRODUCT DWG. - REV. PER EAR 15100	MAY18/22	S.M.
R	PRODUCT DWG. - REV. PER EAR 15058	JUL22/22	S.M.
S	PRODUCT DWG. - REV. PER EAR 15058	AUG10/22	S.M.



**APPLICATION VIEW
WITH 3 CONTACTS
AND WIRES INSTALLED**



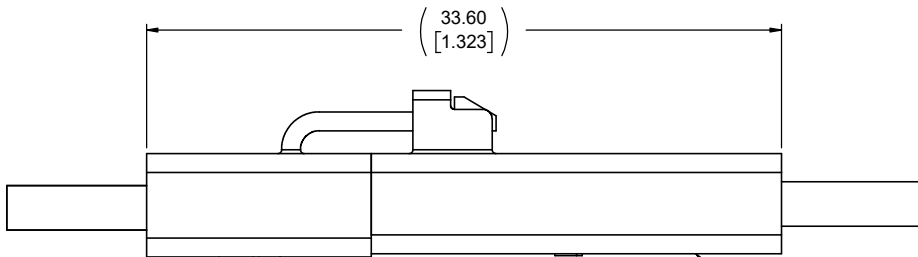
**APPLICATION VIEW
WITH 6 CONTACTS
AND WIRES INSTALLED**



**FLH-SC136-XXX - SOCKET CONTACT
SEE NOTES 3 & 4
SCALE 10:1**

NOTES:

- MATERIALS: ALL MATERIALS ARE RoHS COMPLIANT PER EU DIRECTIVE 2011/65/EU & AMENDMENTS
 - HOUSING: ENGINEERING THERMOPLASTIC, UL FLAMMABILITY RATING 94V-0, COLOUR BLACK
 - SEALS: SILICONE RUBBER, UL FLAMMABILITY RATING 94V-0.
- ELECTRICAL CHARACTERISTICS
 - CURRENT RATING : 7A (18 AWG OR 1 mm²) OR 5A (20 AWG OR 0.5 mm²) OR 3A (22 AWG OR 0.34 mm²) PER CONTACT
 - DIELECTRIC WITHSTANDING VOLTAGE: 1500 VAC
 - INSULATION RESISTANCE: 500 MEGAOHMS
 - OPERATING TEMPERATURE: -40 °C TO +105 °C
- CRIMP STRANDED WIRE TO CONTACT BEFORE ASSEMBLING INTO HOUSING.
- ENVIRONMENTAL PROTECTION: IP67 PER IEC 60529 IN MATED CONDITION
- SOCKET CONTACTS TO BE PURCHASED SEPARATELY ON REEL. P/N: FLH-SC136-XXX



SOCKET CONNECTOR
FLH-SX1-00

PIN CONNECTOR
FLH-PX1-00

MATED ASSEMBLY VIEW

UNLESS SPECIFIED OTHERWISE	DRAWN	B.COPPING	FEB20/18
PRIMARY UNITS MILLIMETERS	CHECKED	S.MUGAN	FEB20/18
SECONDARY UNITS INCHES	M.E. APP'D		
REFERENCE IN PARENTHESES	Q.A. APP'D		
GENERAL TOLERANCES	DWG APPR.		
1 DECIMAL PLACE	ENG. REL. NO.		
2 DECIMAL PLACES ±0.10	REF.		
3 DECIMAL PLACES	THIRD ANGLE PROJECTION		
ANGULAR DEGREES	DO NOT SCALE DRAWING		

Amphenol Canada Corp.
Commercial Products
FLH SERIES, MINI SEALED 2.5mm PITCH
PLUG HOUSING ASSEMBLY, 1 TO 6
CONTACT OPTIONS,
RoHS COMPLIANT

DWG. NO.	REV
P-FLH-SX1-XX-X	S
CODE ID NO. 03554	DWG SIZE: X
SCALE: 5:1	SHEET 1 OF 1