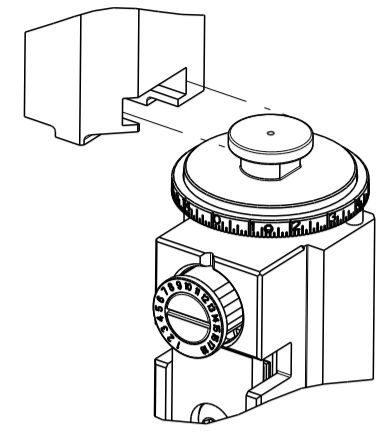


| PART NUMBER | REVISION | DESCRIPTION | FEED TYPE |
|-------------|----------|--|------------|
| 2151585-1 | G | FINE CRIMP HEIGHT ADJUST | MECHANICAL |
| 2151585-2 | G | FINE CRIMP HEIGHT ADJUST | PNEUMATIC |
| 5-2151585-1 | G | SEAL STRIPPER CRIMPER TERMINATING UNIT | MECHANICAL |
| 5-2151585-2 | G | SEAL STRIPPER CRIMPER TERMINATING UNIT | PNEUMATIC |
| 7-2151585-1 | G | MECHANICAL AND CRIMP TOOLING KIT | MECHANICAL |
| 7-2151585-2 | G | PNEUMATIC AND CRIMP TOOLING KIT | PNEUMATIC |
| 7-2151585-7 | D | CRIMP TOOLING KIT | - |

ATLANTIC VERSION TERMINATOR INTERFACE ADAPTER



| APPLICATOR DATA | | |
|-----------------|----------------|------|
| CRIMP | SIZE | TYPE |
| WIRE | 1.02 mm [.040] | F |
| INSUL | 2.90 mm [.114] | O |

APPLICATOR INSTRUCTIONS 408-35042

| TERMINAL DATA: TE TERMINAL | | TE CRIMP SPECIFICATION | |
|------------------------------------|-----------|---------------------------|--------|
| TERMINAL NAME: MC ON-1.2 LL | | | |
| WIRE STRIP LENGTH | | INSULATION DIAMETER RANGE | |
| 3.00-3.60 mm [.118-.142 IN] | | ∅ | |
| TERMINAL APPLICATION SPECIFICATION | 114-18464 | | AT9106 |

| TERMINALS APPLIED | | | | |
|-------------------|-------------|---------|----------|----------------|
| TE TERMINAL | TE TERMINAL | TE SEAL | TE SEAL | CABLE DIAMETER |
| 2141970-1 | 2141970-2 | | 967067-2 | ∅0.9-1.4mm |
| 2141970-3 | | | | |

| WIRE SIZE | CRIMP HEIGHT mm [INCH] | CRIMP HEIGHT REFERENCE SETTING |
|-----------|-------------------------------|--------------------------------|
| 0.22mm2 | 0.74 +/- 0.02 [.029 +/- .001] | 7.0 |
| 0.17mm2 | 0.70 +/- 0.02 [.028 +/- .001] | 7.6 |
| 0.13mm2 | 0.68 +/- 0.02 [.027 +/- .001] | 7.8 |

- RECOMMENDED SPARE PARTS
- REFER TO SUPPLIED INSTRUCTION SHEET FOR CLEANING, LUBRICATION AND STORAGE OF APPLICATOR.
- APPLY PART NUMBER 2-23419-6 LOCTITE TO THREADS OF ITEM 242.
- CRIMP HEIGHT REFERENCE SETTING WAS THE SETTING USED WHEN THE APPLICATOR WAS QUALIFIED AT THE FACTORY. ADJUSTMENT MAY BE NECESSARY WHEN RUNNING APPLICATOR IN THE FIELD.
- APPLY TORO-SEAL IN ALLEN SOCKET TO FILL HOLE AFTER FLAT HD HAS BEEN ADJUSTED TO CORRECT HEIGHT AT QUALIFICATION. APPLY #1-23419-5 LOC-TITE TO THREADS.
- 6. UNLESS SPECIFIED OTHERWISE TORQUE VALUES SHALL BE USED PER DOCUMENT, 101-35000.
- TERMINAL LUBRICANT IS RECOMMENDED.

***WARNING**
 ON INSTALLATION, SET WIRE DISC TO CRIMP HEIGHT REFERENCE SETTING FOR LARGEST WIRE SIZE. CRIMP HEIGHT REFERENCE SETTINGS GREATER THAN THE VALUE SHOWN MAY CAUSE DAMAGE TO THE CRIMP TOOLING. REFER TO THE INSTRUCTION SHEET FOR PROPER SETUP AND ADJUSTMENTS.

ATLANTIC VERSION
 Shown on sheets 1 of 4 & 2 of 4
 (Pacific version shown on sheets 3 of 4 & 4 of 4)

| LOC | DIST | REVISIONS | | | | | |
|-----|------|-----------|-----|---------------|-----------|-----|------|
| A | 66 | P | LTN | DESCRIPTION | DATE | OWN | APVD |
| | | D | | ECR-15-004615 | 24MAR2015 | JH | JT |
| | | E | | ECR-18-006920 | 04MAY2018 | TB | JDG |
| | | F | | ECR-19-005482 | 04APR2019 | JAH | CT |
| | | G | | ECR-22-129178 | 07MAR2022 | LG | TE |

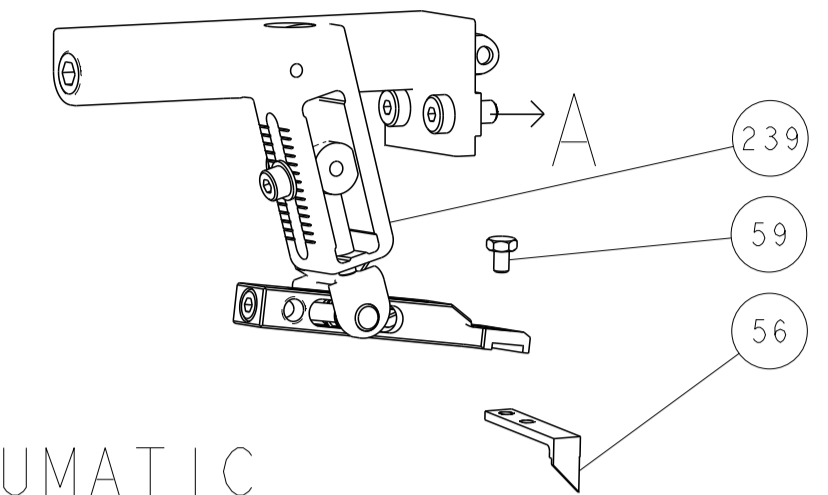
| | | | | | | | | | |
|---|-----|-----|-----|-----|-----|-----|-------------|-------------------------------------|-----|
| - | 1 | 1 | 1 | 1 | 1 | 1 | 1803945-4 | TONKER | 300 |
| - | 1 | 1 | 1 | 1 | 1 | 1 | 22278-9 | SPRING, COMPRESSION | 299 |
| - | 2 | 2 | 2 | 2 | 2 | 2 | 4-18032-3 | SCR, SET, FLT PNT, M3 X 6.0 | 298 |
| - | 1 | 1 | 1 | 1 | 1 | 1 | 1803944-1 | SPACER, TONKER | 297 |
| - | - | - | 1 | 1 | - | - | 2-1803583-1 | APPLICATOR BASIC ASSEMBLY, SF | 292 |
| - | 1 | - | 1 | - | 1 | - | 2119641-1 | FEED CAM, AIR FEED | 248 |
| - | 1 | 1 | 1 | 1 | 1 | 1 | 2119082-3 | CAM, SNAIL, INSULATION ADJUSTMENT | 244 |
| - | 1 | 1 | 1 | 1 | 1 | 1 | 2079764-1 | WASHER, WAVE SPRING, CREST-TO-CREST | 243 |
| - | 1 | 1 | 1 | 1 | 1 | 1 | 2119083-1 | RETAINER, INSULATION DIAL | 242 |
| - | 1 | 1 | 1 | 1 | 1 | 1 | 7-18023-7 | SCR, SKT HD CAP M3 X 4.0 | 241 |
| - | - | 1 | - | 1 | - | 1 | 2119580-1 | MECHANICAL FEED ASSEMBLY | 239 |
| - | 1 | - | 1 | - | 1 | - | 2844940-1 | AIR FEED MODULE | 238 |
| - | REF | REF | REF | REF | REF | REF | 994970-2 | COUNTER, MAGNETIC | 164 |
| - | 1 | 1 | 1 | 1 | 1 | 1 | 2119955-1 | ASSY, LUBRICATOR, SIDE FEED | 113 |
| - | 1 | 1 | 1 | 1 | 1 | 1 | 2844908-1 | SCREW, LOCKING | 99 |
| - | 1 | 1 | 1 | 1 | 1 | 1 | 2844907-1 | POST, LOCKING | 98 |
| - | 1 | 1 | 1 | 1 | 1 | 1 | 455888-4 | SPACER, CRIMPER | 82 |
| - | 1 | 1 | 1 | 1 | 1 | 1 | 1803607-3 | DOCUMENTATION PACKAGE | 71 |
| - | 1 | 1 | 1 | 1 | 1 | 1 | 2119740-1 | TAG, IDENTIFICATION | 67 |
| - | 2 | 2 | 2 | 2 | 2 | 2 | 2168078-1 | SCREW, DRIVE, RH, RoHS, 2 x .188 | 66 |
| - | 1 | 1 | 1 | 1 | 1 | 1 | 2168083-2 | SCR, SKT HD CAP, RoHS, M4 X 8.0 | 60 |
| - | 1 | 1 | 1 | 1 | 1 | 1 | 5-18022-5 | SCR, HEX HD CAP, M4 X 6.0 | 59 |
| - | 1 | 1 | 1 | 1 | 1 | 1 | 985575-3 | SCR, FLT SKT HD CAP M3 X 10.0 | 57 |
| - | 1 | 1 | 1 | 1 | 1 | 1 | 1338685-1 | PAWL, FEED | 56 |
| - | 4 | 4 | 4 | 4 | 4 | 4 | 2168083-3 | SCR, SKT HD CAP, RoHS, M4 X 12.0 | 54 |
| - | 2 | 2 | 2 | 2 | 2 | 2 | 2168083-8 | SCR, SKT HD CAP, RoHS, M4 X 16 | 53 |
| - | 1 | 2 | 1 | 2 | 1 | 2 | 18023-9 | SCR, SKT HD CAP M4 X 6.0 | 49 |
| - | - | 1 | - | 1 | - | 1 | 2119652-1 | FEED CAM, PRE FEED | 48 |
| - | - | 1 | - | 1 | - | 1 | 2119653-1 | FEED CAM, POST FEED | 47 |
| - | 1 | 1 | - | - | 1 | 1 | 1803583-9 | APPLICATOR BASIC ASSEMBLY, SF | 46 |
| - | 1 | 1 | 1 | 1 | 1 | 1 | 1803515-1 | RAM ASSEMBLY, SF ATLANTIC | 44 |
| - | 1 | 1 | 1 | 1 | 1 | 1 | 1803602-1 | SCR, BHSC, RoHS (M8 X 25) | 41 |
| - | 1 | 1 | 1 | 1 | 1 | 1 | 1752356-1 | SUPPORT, TERMINAL | 34 |
| - | 2 | 2 | 2 | 2 | 2 | 2 | 2079383-5 | SCR, BHSC, RoHS (M4 X 20) | 33 |
| - | 2 | 2 | 2 | 2 | 2 | 2 | 2-2844962-4 | SPACER, CYLINDRICAL, STRIP GUIDE | 30 |
| - | 1 | 1 | 1 | 1 | 1 | 1 | 2844992-1 | ASSEMBLY, STRIP GUIDE | 29 |
| - | 1 | 1 | 1 | 1 | 1 | 1 | 1-455888-0 | SPACER, CRIMPER | 28 |
| - | 1 | 1 | 1 | 1 | 1 | 1 | 1320928-2 | STRIP GUIDE | 24 |
| - | 1 | 1 | - | - | 1 | 1 | 2168083-2 | SCR, SKT HD CAP, RoHS, M4 X 8.0 | 21 |
| - | 2 | 2 | 1 | 1 | 2 | 2 | 1-18028-2 | WASHER, FLAT, REG M4 | 20 |
| - | 1 | 1 | - | - | 1 | 1 | 2119533-1 | STRIPPER, SIDE FEED | 19 |
| - | 1 | 1 | 1 | 1 | 1 | 1 | 2119806-1 | INSERT, SHEAR | 13 |
| - | 1 | 1 | 1 | 1 | 1 | 1 | 3-22280-3 | SPRING, COMPRESSION | 12 |
| - | 1 | 1 | 1 | 1 | 1 | 1 | 1-356885-5 | STOP, SHEAR | 11 |
| - | 1 | 1 | 1 | 1 | 1 | 1 | 2119805-1 | SHEAR HOLDER, FRONT | 10 |
| - | 1 | 1 | 1 | 1 | 1 | 1 | 318707-1 | FLOATING SHEAR, FRONT | 9 |
| - | 1 | 2 | 2 | 1 | 1 | 1 | 1333332-7 | ANVIL, COMBINATION, SPECIAL | 8 |
| - | 1 | 1 | 1 | 1 | 1 | 1 | 2-240641-9 | SPACER | 7 |
| - | - | - | - | - | - | - | - | - | 6 |
| - | 1 | 1 | 1 | 1 | 1 | 1 | 2119781-1 | DEPRESSOR, SHEAR | 5 |
| - | 1 | 1 | 1 | 1 | 1 | 1 | 3-238011-8 | BLOCK, CRIMPER SPACER | 4 |
| - | 1 | 2 | 2 | 1 | 1 | 1 | 1633996-2 | CRIMPER, INSULATION SPECIAL | 3 |
| - | 1 | 1 | 1 | 1 | 1 | 1 | 455888-2 | SPACER, CRIMPER | 2 |
| - | 1 | 2 | 2 | 1 | 1 | 1 | 5-1633738-5 | CRIMPER, WIRE | 1 |

| ITEM NO | PART NO | DESCRIPTION | ITEM NO |
|---------|---------|-------------|---------|
| -77 | -72 | -71 | -52 |
| -51 | -2 | -1 | |

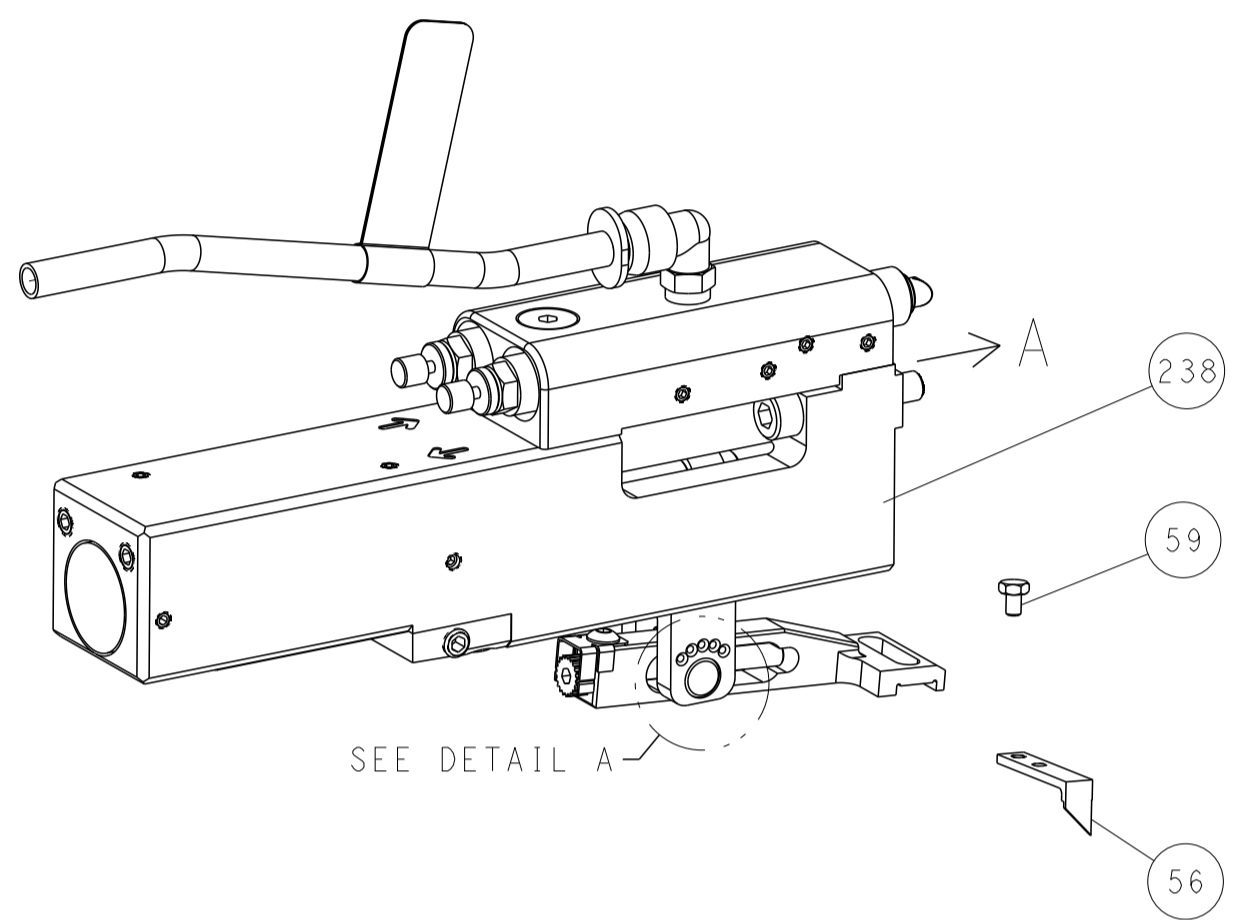
| | | |
|--|----------------------------|--------------|
| OWN | C. CHEN | 20FEB2013 |
| CHK | S. XI | 20FEB2013 |
| APVD | J. CRUZ | 20FEB2013 |
| NAME | Ocean Side Feed Applicator | |
| PRODUCT SPEC | | |
| APPLICATION SPEC | | |
| SIZE | CAGE CODE | DRAWING NO |
| A1 | 00779 | 2151585 |
| Customer Accessible Production Drawing | | |
| SCALE | 1:2 | SHEET 1 OF 4 |
| REV | G | |

| LOC | DIST | REVISIONS | | | | | |
|-----|------|-----------|-----|-------------|------|-----|------|
| | | P | LTN | DESCRIPTION | DATE | DWN | APVD |
| A | 66 | - | - | SEE SHEET 1 | - | - | - |

FEED TYPE MECHANICAL



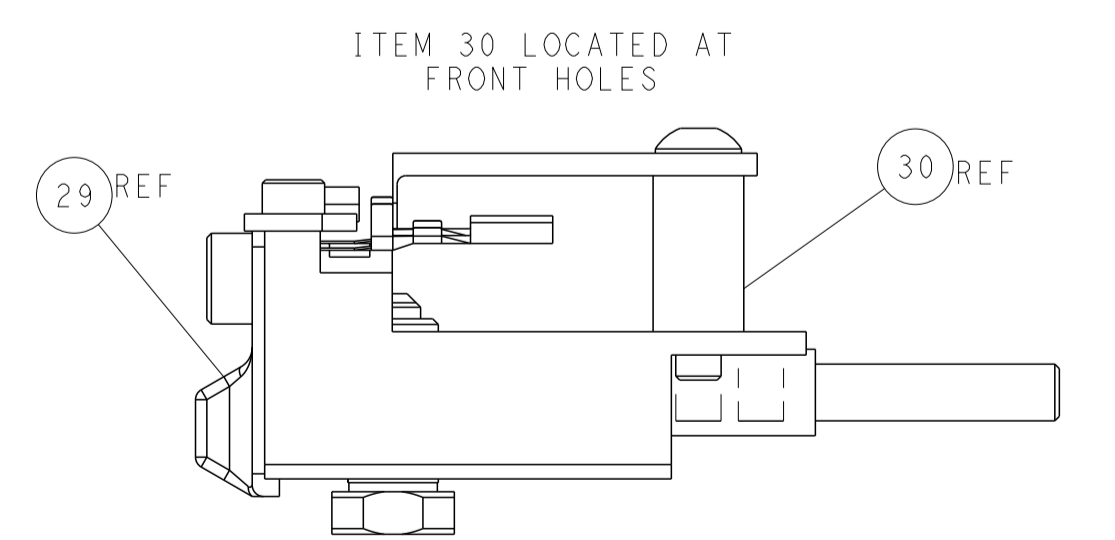
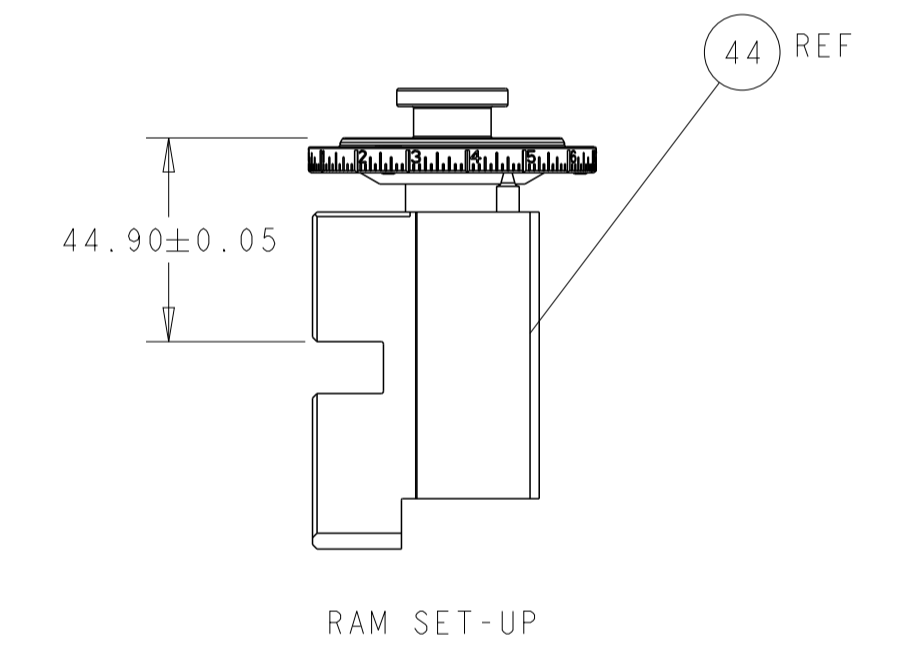
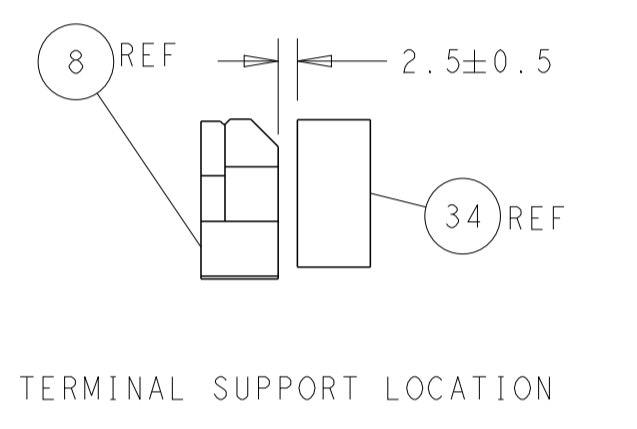
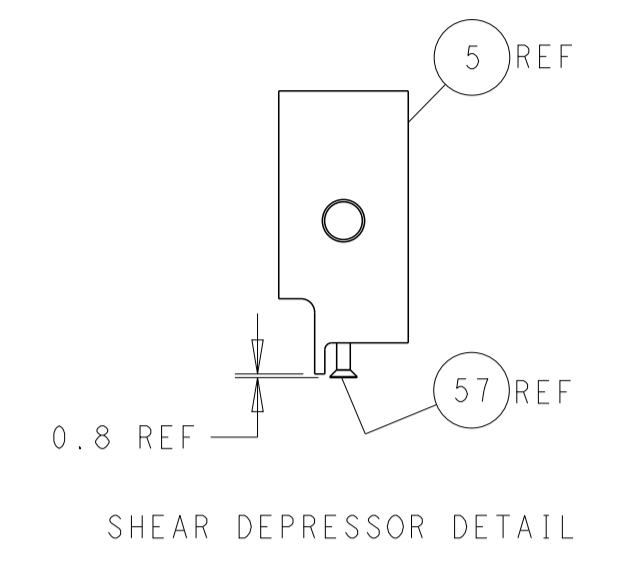
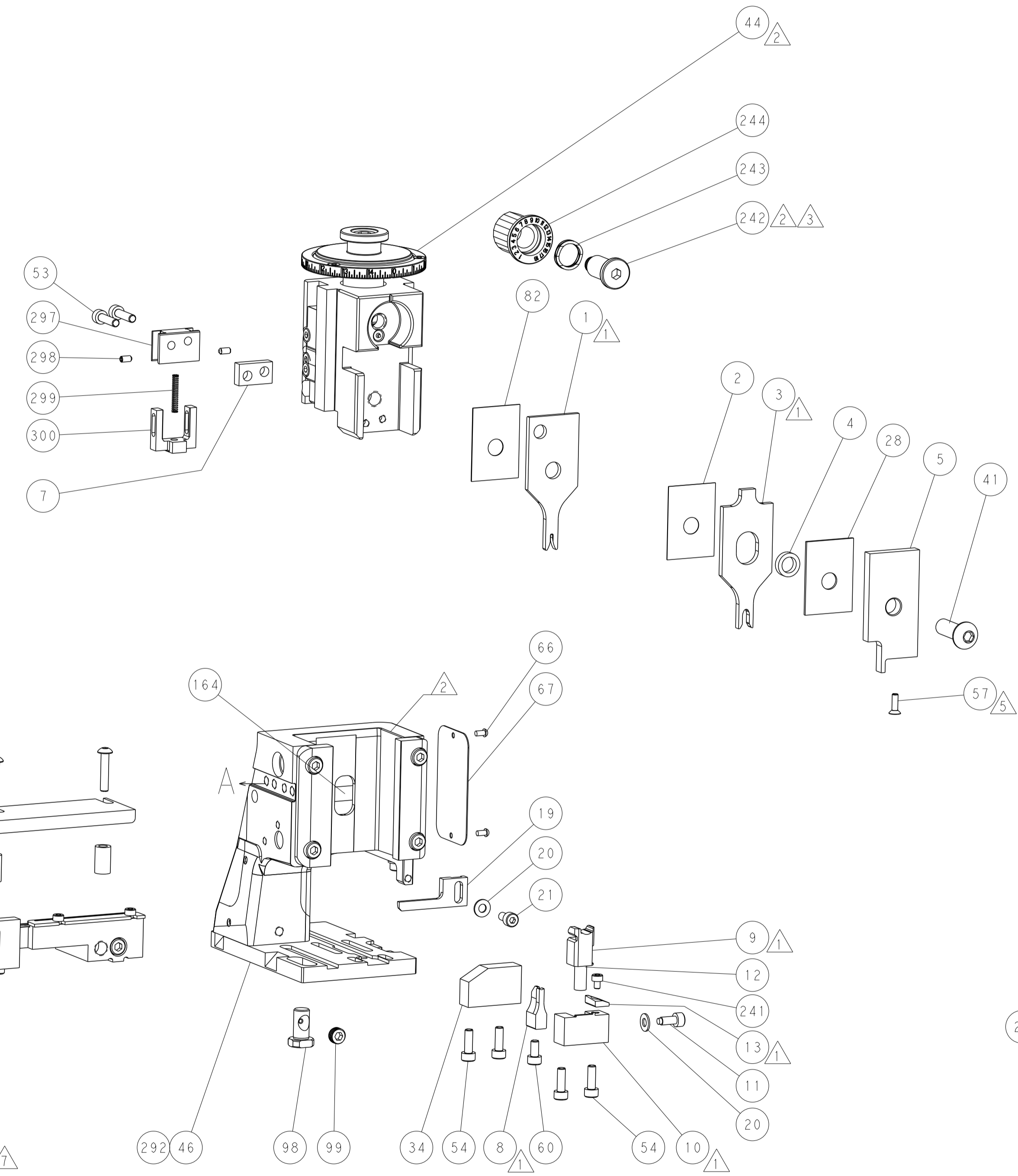
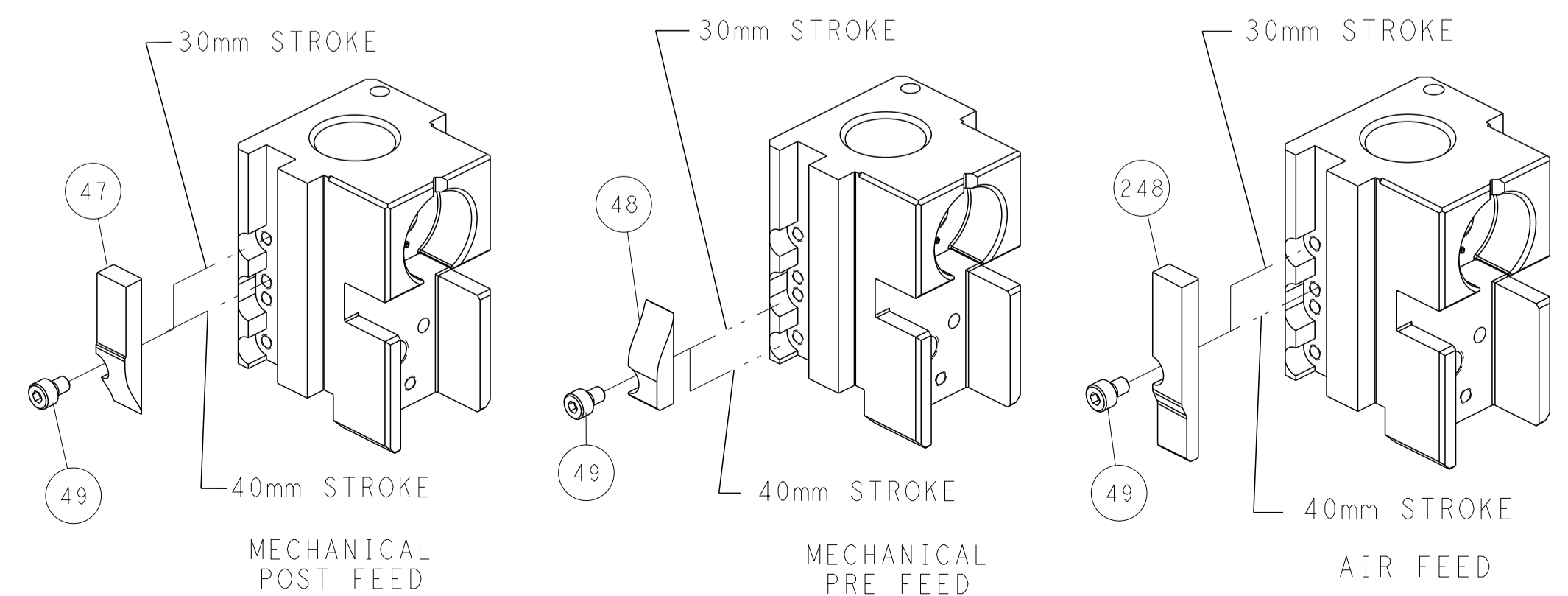
PNEUMATIC



FEED SPRING SETTING POSITION (SHOWN FROM REAR SIDE)



CAM POSITIONS



ATLANTIC VERSION
 Shown on sheets 1 of 4 & 2 of 4
 (Pacific version shown on sheets 3 of 4 & 4 of 4)

| | | | | |
|---|--|---|--|----------------|
| DIMENSIONS: mm TOLERANCES UNLESS OTHERWISE SPECIFIED: 0 PLC ± 1 PLC ± 2 PLC ± 3 PLC ± 4 PLC ± ANGLES ± FINISH ± | | DWN: C. CHEN 20FEB2013 CHK: S. XI 20FEB2013 APVD: J. CRUZ 20FEB2013 PRODUCT SPEC APPLICATION SPEC WEIGHT MATERIAL | NAME: Ocean Side Feed Applicator SIZE: A1 CAGE CODE: 00779 DRAWING NO: 2151585 SCALE: 1:2 SHEET: 2 OF 4 REV: G | RESTRICTED TO: |
|---|--|---|--|----------------|

| PART NUMBER | REVISION | DESCRIPTION | FEED TYPE |
|-------------|----------|--------------------------|------------|
| 2-2151585-1 | G | FINE CRIMP HEIGHT ADJUST | MECHANICAL |
| 2-2151585-2 | G | FINE CRIMP HEIGHT ADJUST | PNEUMATIC |
| 7-2151585-7 | D | CRIMP TOOLING KIT | - |

PACIFIC VERSION TERMINATOR
INTERFACE ADAPTER



| APPLICATOR DATA | | |
|-----------------|----------------|------|
| CRIMP | SIZE | TYPE |
| WIRE | 1.02 mm [.040] | F |
| INSUL | 2.90 mm [.114] | O |

APPLICATOR INSTRUCTIONS
408-35042

| TERMINAL DATA: TE TERMINAL | | TE CRIMP SPECIFICATION | |
|------------------------------------|---------------------------|------------------------|----------|
| TERMINAL NAME: MC ON-1.2 LL | | | |
| WIRE STRIP LENGTH | INSULATION DIAMETER RANGE | | |
| 3.00-3.60 mm [.118-.142 IN] | Ø | | |
| TERMINAL APPLICATION SPECIFICATION | 114-18464 | - | - |
| | | - | AT9106 |
| TERMINALS APPLIED | | | |
| TE TERMINAL | TE TERMINAL | TE SEAL | TE SEAL |
| 2141970-1 | 2141970-2 | | 967067-2 |
| 2141970-3 | | | |

| WIRE SIZE | CRIMP HEIGHT mm [INCH] | CRIMP HEIGHT REFERENCE SETTING |
|---------------------|-------------------------------|--------------------------------|
| 0.22mm ² | 0.74 +/- 0.02 [.029 +/- .001] | 7.0 |
| 0.17mm ² | 0.70 +/- 0.02 [.028 +/- .001] | 7.6 |
| 0.13mm ² | 0.68 +/- 0.02 [.027 +/- .001] | 7.8 |

- RECOMMENDED SPARE PARTS
- REFER TO SUPPLIED INSTRUCTION SHEET FOR CLEANING, LUBRICATION AND STORAGE OF APPLICATOR.
- APPLY PART NUMBER 2-23419-6 LOCTITE TO THREADS OF ITEM 242.
- CRIMP HEIGHT REFERENCE SETTING WAS THE SETTING USED WHEN THE APPLICATOR WAS QUALIFIED AT THE FACTORY. ADJUSTMENT MAY BE NECESSARY WHEN RUNNING APPLICATOR IN THE FIELD.
- APPLY TORO-SEAL IN ALLEN SOCKET TO FILL HOLE AFTER FLAT HD HAS BEEN ADJUSTED TO CORRECT HEIGHT AT QUALIFICATION. APPLY #1-23419-5 LOC-TITE TO THREADS.
- UNLESS SPECIFIED OTHERWISE TORQUE VALUES SHALL BE USED PER DOCUMENT, 101-35000.
- TERMINAL LUBRICANT IS RECOMMENDED.

***WARNING**
ON INSTALLATION, SET WIRE DISC TO CRIMP HEIGHT REFERENCE SETTING FOR LARGEST WIRE SIZE. CRIMP HEIGHT REFERENCE SETTINGS GREATER THAN THE VALUE SHOWN MAY CAUSE DAMAGE TO THE CRIMP TOOLING. REFER TO THE INSTRUCTION SHEET FOR PROPER SETUP AND ADJUSTMENTS.

| LOC | DIST | REVISIONS | | | | | |
|-----|------|-----------|-----|-------------|------|-----|------|
| | | P | LTN | DESCRIPTION | DATE | DWN | APVD |
| A | 66 | - | - | SEE SHEET 1 | - | - | - |

| | | | | | |
|---|-----|-----|-------------|-------------------------------------|-----|
| - | 1 | 1 | 1803945-4 | TONKER | 300 |
| - | 1 | 1 | 22278-9 | SPRING, COMPRESSION | 299 |
| - | 2 | 2 | 4-18032-3 | SCR, SET, FLT PNT, M3 X 6.0 | 298 |
| - | 1 | 1 | 1803944-1 | SPACER, TONKER | 297 |
| - | 1 | 1 | 2119082-3 | CAM, SNAIL, INSULATION ADJUSTMENT | 244 |
| - | 1 | 1 | 2079764-1 | WASHER, WAVE SPRING, CREST-TO-CREST | 243 |
| 3 | - | 1 | 2119083-1 | RETAINER, INSULATION DIAL | 242 |
| - | 1 | 1 | 7-18023-7 | SCR, SKT HD CAP M3 X 4.0 | 241 |
| - | - | 1 | 2119580-1 | MECHANICAL FEED ASSEMBLY | 239 |
| - | 1 | - | 2844940-1 | AIR FEED MODULE | 238 |
| - | REF | REF | 994970-2 | COUNTER, MAGNETIC | 164 |
| - | 1 | - | 2119641-2 | FEED CAM, AIR FEED | 151 |
| - | 1 | 1 | 2168083-8 | SCR, SKT HD CAP, RoHS, M4 X 16 | 144 |
| - | 4 | 4 | 2168083-9 | SCR, SKT HD CAP, RoHS, M4 X 20 | 143 |
| - | - | 1 | 2119653-2 | FEED CAM, POST FEED | 142 |
| - | 1 | 1 | 1-1803583-0 | APPLICATOR BASIC ASSEMBLY, SF | 141 |
| - | 1 | 1 | 1803516-1 | RAM ASSEMBLY, SF PACIFIC | 140 |
| 4 | - | 1 | 2119955-1 | ASSY, LUBRICATOR, SIDE FEED | 113 |
| - | 1 | 1 | 2844908-1 | SCREW, LOCKING | 99 |
| - | 1 | 1 | 2844907-1 | POST, LOCKING | 98 |
| - | 1 | 1 | 455888-4 | SPACER, CRIMPER | 82 |
| - | 1 | 1 | 1803607-3 | DOCUMENTATION PACKAGE | 71 |
| - | 1 | 1 | 2119740-1 | TAG, IDENTIFICATION | 67 |
| - | 2 | 2 | 2168078-1 | SCREW, DRIVE, RH, RoHS, 2 x .188 | 66 |
| - | 1 | 1 | 5-18022-5 | SCR, HEX HD CAP, M4 X 6.0 | 59 |
| 5 | - | 1 | 985575-3 | SCR, FLT SKT HD CAP M3 X 10.0 | 57 |
| - | 1 | 1 | 1338685-1 | PAWL, FEED | 56 |
| - | 2 | 2 | 2168083-8 | SCR, SKT HD CAP, RoHS, M4 X 16 | 53 |
| - | 1 | 2 | 18023-9 | SCR, SKT HD CAP M4 X 6.0 | 49 |
| - | - | 1 | 2119652-1 | FEED CAM, PRE FEED | 48 |
| - | 1 | 1 | 1803602-1 | SCR, BHSC, RoHS (M8 X 25) | 41 |
| - | 1 | 1 | 1752356-1 | SUPPORT, TERMINAL | 34 |
| - | 2 | 2 | 2079383-5 | SCR, BHSC, RoHS (M4 X 20) | 33 |
| - | 2 | 2 | 2-2844962-4 | SPACER, CYLINDRICAL, STRIP GUIDE | 30 |
| - | 1 | 1 | 2844992-1 | ASSEMBLY, STRIP GUIDE | 29 |
| - | 1 | 1 | 1-455888-0 | SPACER, CRIMPER | 28 |
| - | 1 | 1 | 1320928-2 | STRIP GUIDE | 24 |
| - | 1 | 1 | 2168083-2 | SCR, SKT HD CAP, RoHS, M4 X 8.0 | 21 |
| - | 2 | 2 | 1-18028-2 | WASHER, FLAT, REG M4 | 20 |
| - | 1 | 1 | 2119533-1 | STRIPPER, SIDE FEED | 19 |
| 4 | - | 1 | 2119806-1 | INSERT, SHEAR | 13 |
| - | 1 | 1 | 3-22280-3 | SPRING, COMPRESSION | 12 |
| - | 1 | 1 | 1-356885-5 | STOP, SHEAR | 11 |
| 4 | - | 1 | 2119805-1 | SHEAR HOLDER, FRONT | 10 |
| 4 | - | 1 | 318707-1 | FLOATING SHEAR, FRONT | 9 |
| 4 | 1 | 1 | 1333332-7 | ANVIL, COMBINATION, SPECIAL | 8 |
| - | 1 | 1 | 2-240641-9 | SPACER | 7 |
| - | - | - | - | - | 6 |
| - | 1 | 1 | 2119781-1 | DEPRESSOR, SHEAR | 5 |
| - | 1 | 1 | 3-238011-8 | BLOCK, CRIMPER SPACER | 4 |
| 4 | 1 | 1 | 1633996-2 | CRIMPER, INSULATION SPECIAL | 3 |
| - | 1 | 1 | 455888-2 | SPACER, CRIMPER | 2 |
| 4 | 1 | 1 | 5-1633738-5 | CRIMPER, WIRE | 1 |

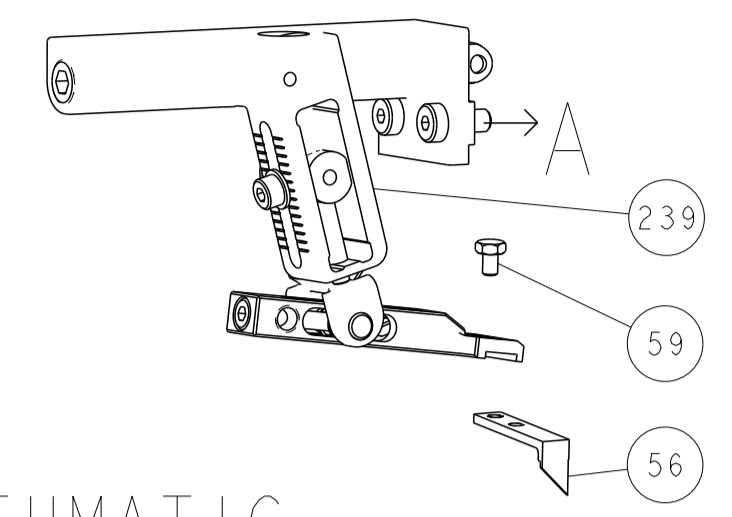
PACIFIC VERSION
Shown on sheets 3 of 4 & 4 of 4
(Atlantic version shown on sheets 1 of 4 & 2 of 4)

| DIMENSIONS: | | TOLERANCES UNLESS OTHERWISE SPECIFIED: | | MATERIAL: | | FINISH: | |
|-------------|---------|--|---------|-----------|---------|----------|----------|
| mm | 0 PLC ± | 1 PLC ± | 2 PLC ± | 3 PLC ± | 4 PLC ± | ANGLES ± | FINISH ± |

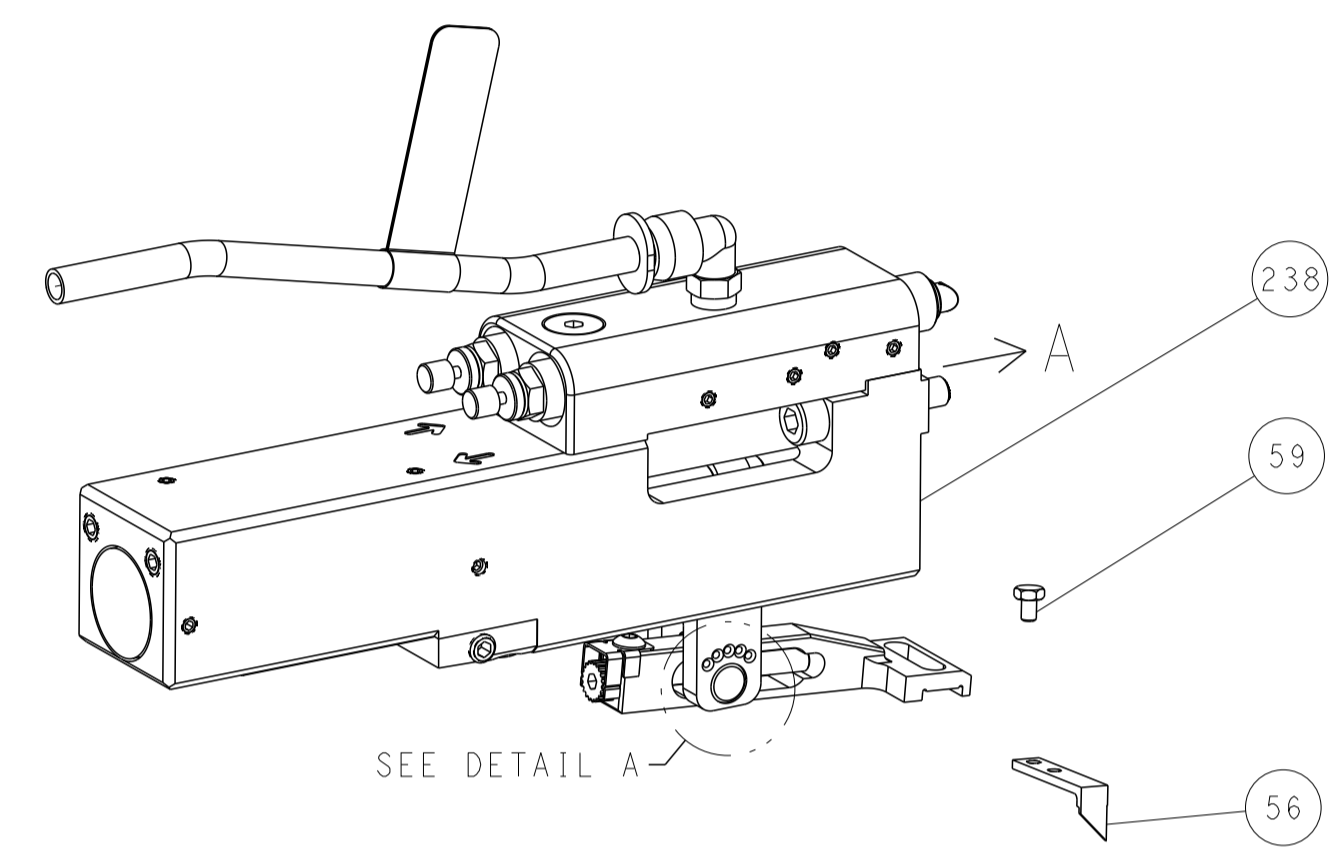
| | | | | | | | |
|-------|-----------|-----------|-----------|------------|----------------------------|-----|-------|
| DATE | 20FEB2013 | CHK | C. CHEN | DATE | 20FEB2013 | CHK | S. XI |
| APVD | J. CRUZ | DATE | 20FEB2013 | NAME | Ocean Side Feed Applicator | | |
| SIZE | A1 | CAGE CODE | 00779 | DRAWING NO | 2151585 | | |
| SCALE | 1:2 | SHEET | 3 | OF | 4 | REV | G |

| LOC | DIST | REVISIONS | | | | | |
|-----|------|-----------|-----|-------------|------|-----|------|
| A | 66 | P | LTN | DESCRIPTION | DATE | OWN | APVD |
| | | - | | SEE SHEET 1 | - | - | - |

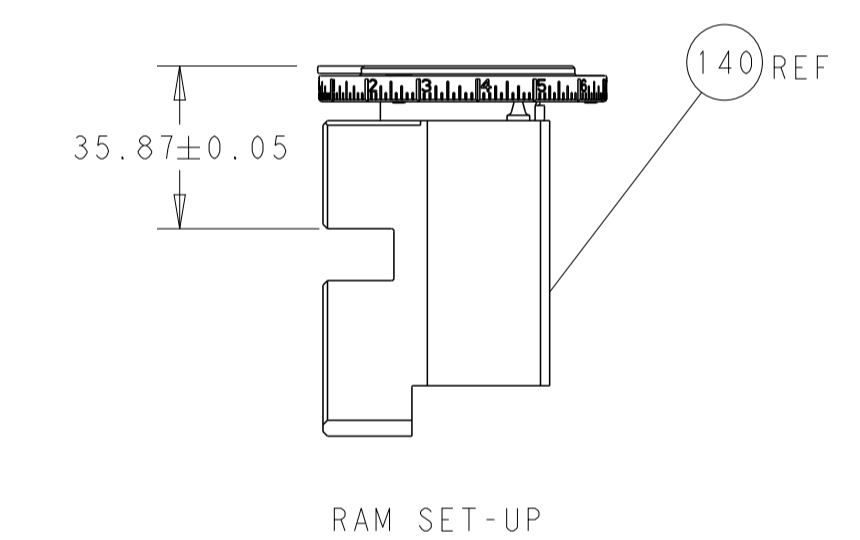
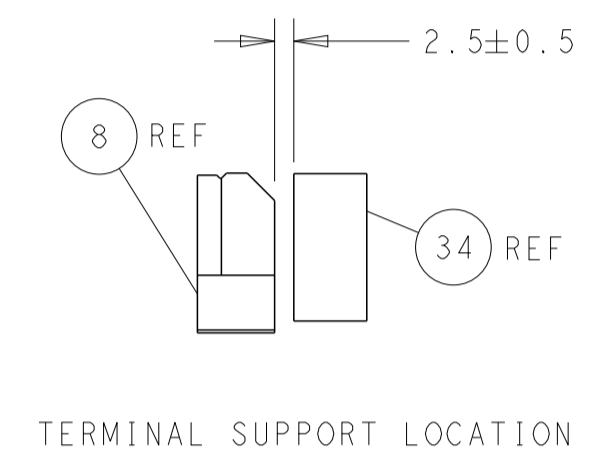
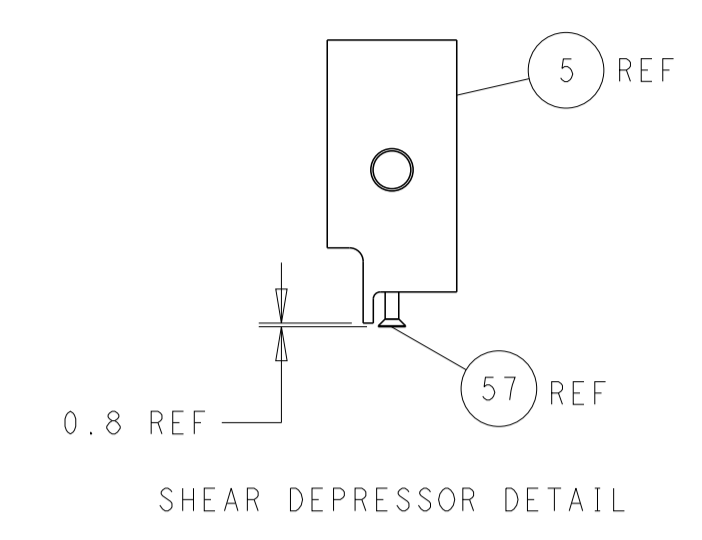
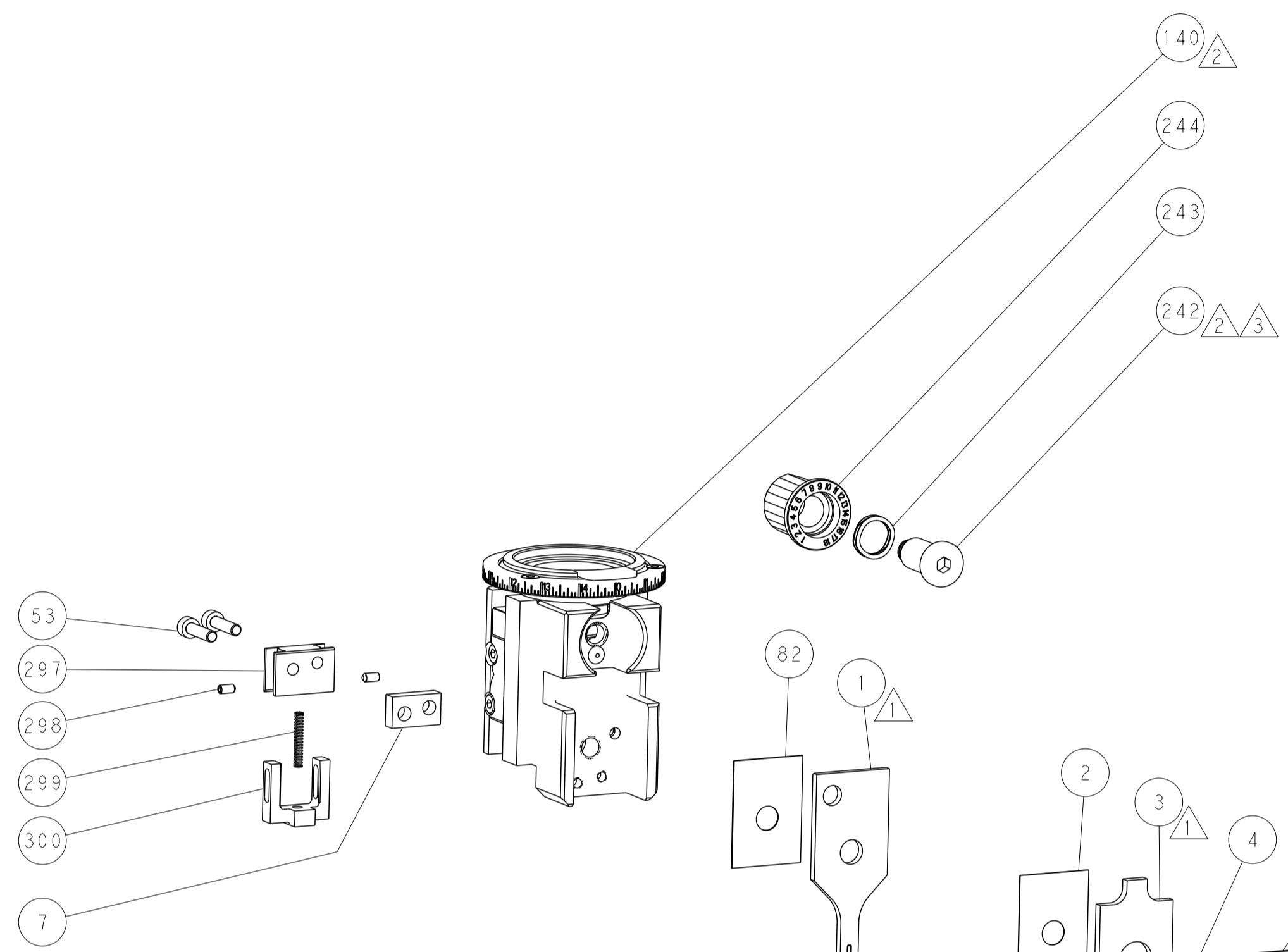
FEED TYPE MECHANICAL



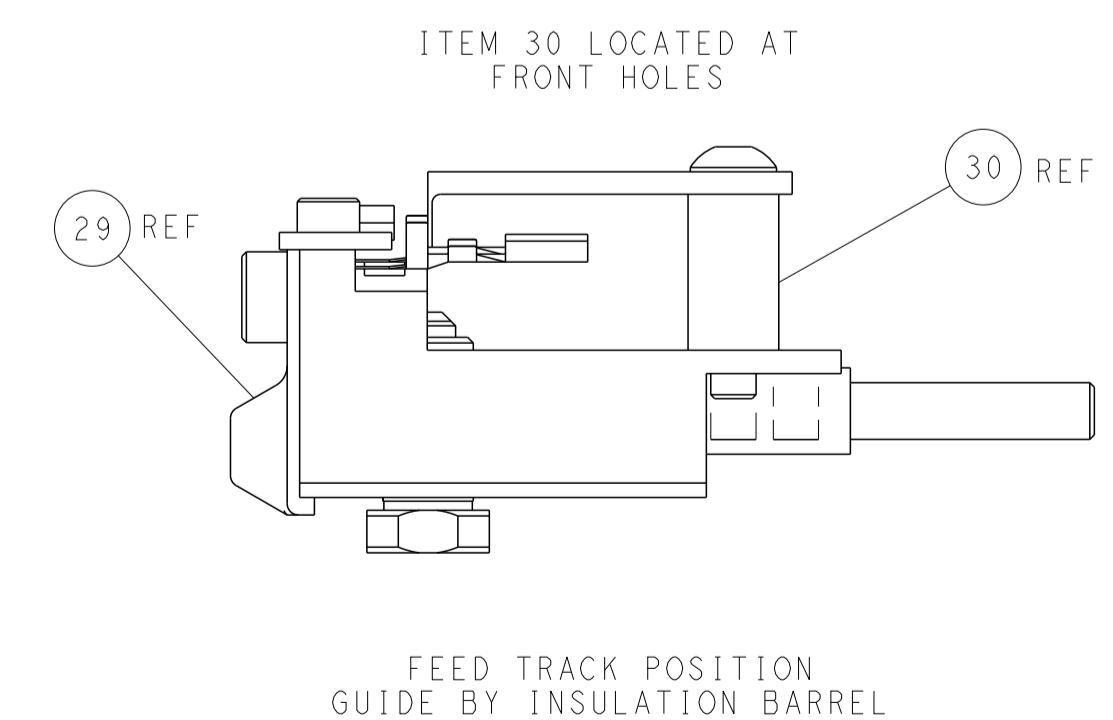
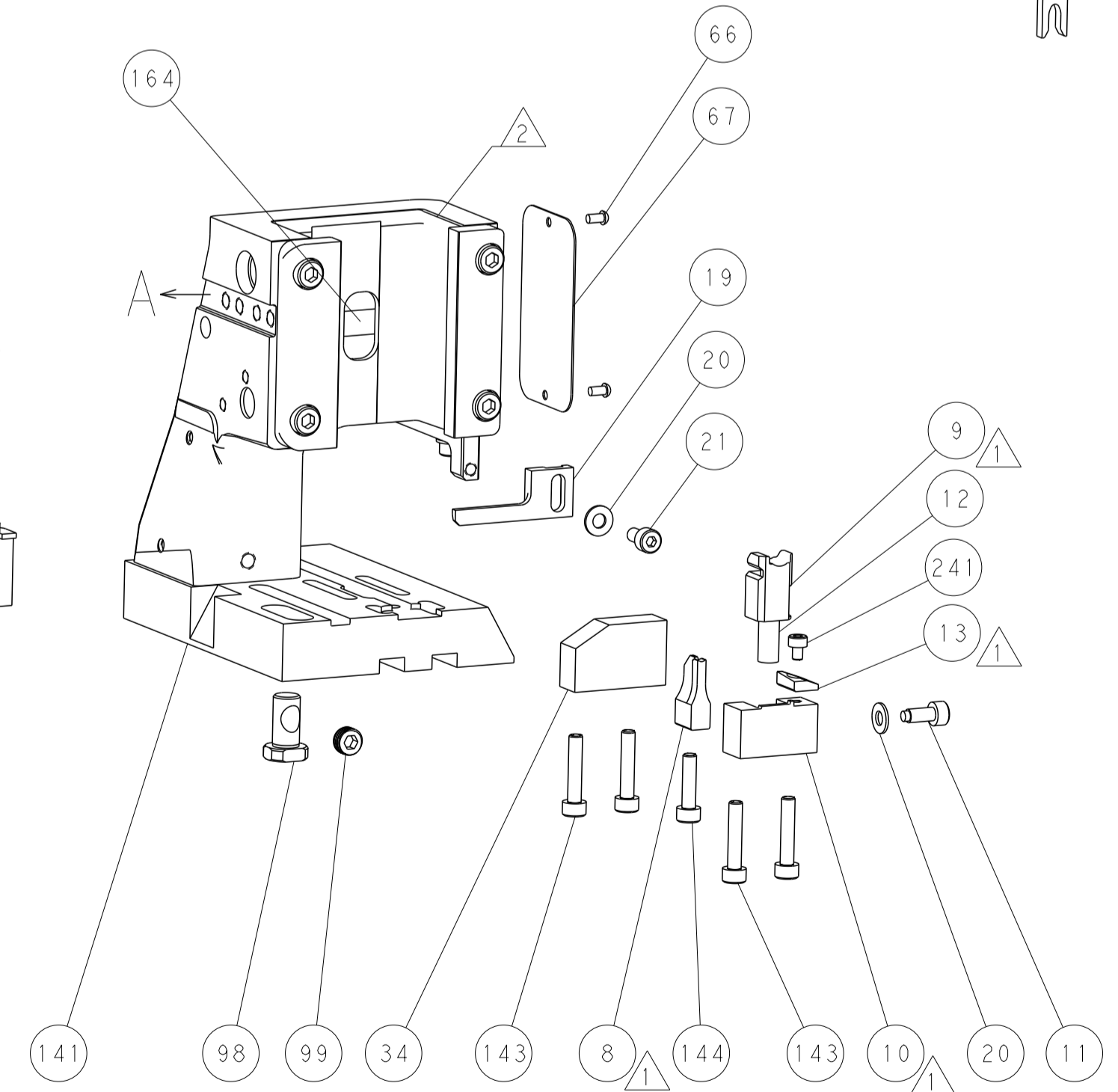
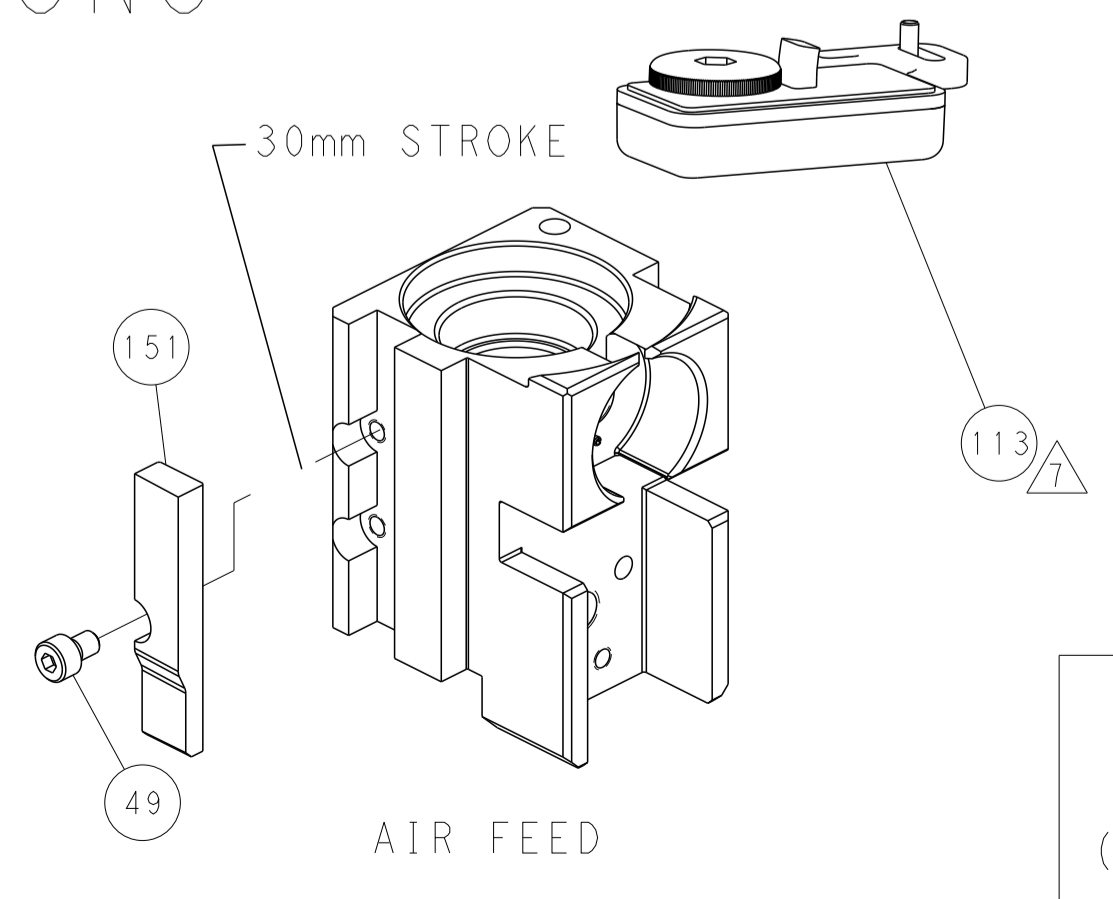
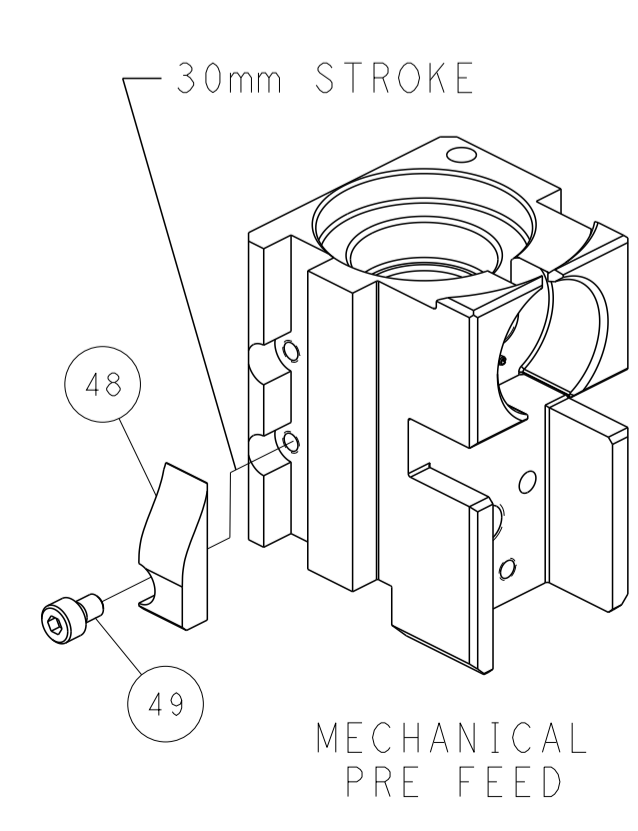
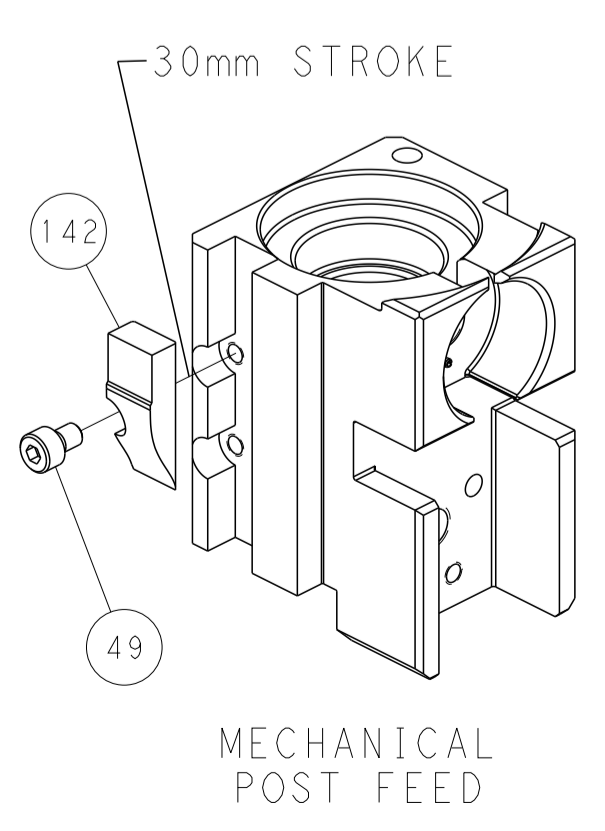
PNEUMATIC



FEED SPRING SETTING POSITION (SHOWN FROM REAR SIDE)



CAM POSITIONS



PACIFIC VERSION
 Shown on sheets 3 of 4 & 4 of 4
 (Atlantic version shown on sheets 1 of 4 & 2 of 4)

| | | | | | | | |
|-------------|---------|--|---------|-------------------------|---------|--|--|
| DIMENSIONS: | | TOLERANCES UNLESS OTHERWISE SPECIFIED: | | DWG: C.CHEN 20FEB2013 | | TE Connectivity | |
| mm | 0 PLC ± | 1 PLC ± | 2 PLC ± | 3 PLC ± | 4 PLC ± | Harrisburg, PA 17105-3608 | |
| MATERIAL: | | FINISH: | | CHK: S.XI 20FEB2013 | | NAME: Ocean Side Feed Applicator | |
| | | | | APVD: J. CRUZ 20FEB2013 | | SIZE: CAGE CODE: DRAWING NO: RESTRICTED TO | |
| | | | | PRODUCT SPEC: | | A1 00779 ©=2151585 | |
| | | | | APPLICATION SPEC: | | Customer Accessible Production Drawing | |
| | | | | WEIGHT: | | SCALE: 1:2 SHEET 4 OF 4 REV G | |