

## 2.4 GHz MegaSphere – Outdoor/Indoor

Model Number:  
**IGO2450**

### Omnidirectional In-Building Antenna

#### Specifications:

- Weather resistant and waterproof with fully sealed radome.
- Installed vertically with cable exiting "top" or "bottom"

<b>Element Type</b>	Linear Array
<b>Frequency Range</b>	2.4 – 2.5 GHz
<b>Peak Gain</b>	5 dBi
<b>Polarization</b>	Vertical
<b>Impedance</b>	50 ohms
<b>Maximum Input Power</b>	50 watts
<b>VSWR (Min. Performance)</b>	< 2.0:1
<b>Dimensions</b>	28.5 x 3.2 cm
<b>Housing</b>	PVC
<b>Wind Resistance</b>	120 mph
<b>Operating/Storage Temperature</b>	-40° to +70°C



#### Mounting:

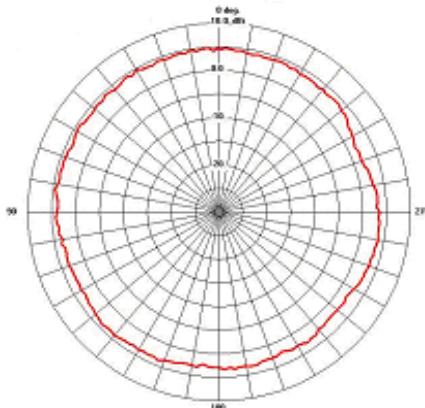
- Outdoor kit: adjustable pole clamp & spacer
- Indoor kit: beam-clip, ceiling grid clip & optional-use ceiling stand-off

#### Cables & Connectors:

Model #	Reference #	Plenum Rated Coax	Connector
<b>IGO2450-RT12</b>	CAF94568	12" RG-142	RP-TNC
<b>IGO2450-NF12</b>	CAF94579	12" RG-142	N-Female

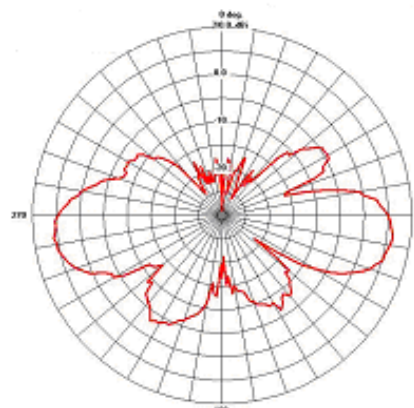


Pattern data files for LANPlanner are available at  
[www.centurion.com](http://www.centurion.com) or [www.wirelessvalley.com](http://www.wirelessvalley.com).



**Azimuth Plane**

Cut perpendicular to the antenna and perpendicular to the cable



**Elevation Plane**

Cut perpendicular to the antenna along the cable axis



**Indoor Mounting Kit**



**Outdoor Mounting Kit**

Specifications subject to change without notice.

IGO2450a – 4/30/04