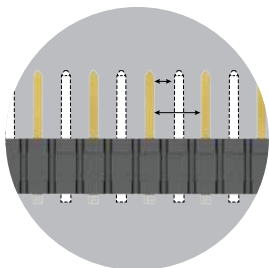


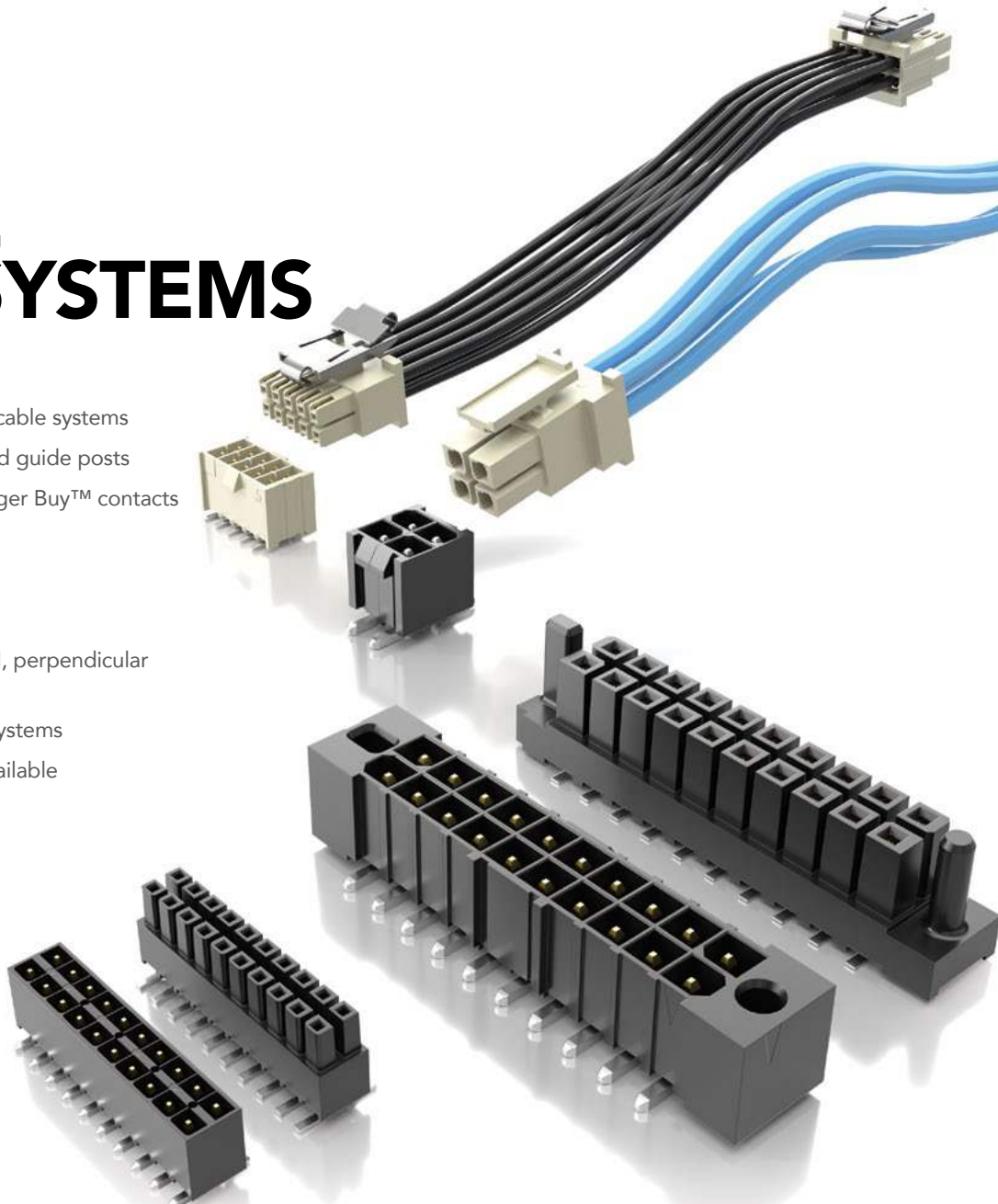
# FLEXIBLE POWER SYSTEMS

## FEATURES & BENEFITS

- Board-to-board and discrete wire cable systems
- Power Mate® system with polarized guide posts
- Mini Mate® system with reliable Tiger Buy™ contacts
- Individually shrouded contacts
- Elevated stack heights
- Optional polarization
- Vertical and right-angle for parallel, perpendicular and coplanar applications
- Rugged metal or plastic latching systems
- Cable components and tooling available



Selectively loading contacts achieves customer specific creepage and clearance requirements.



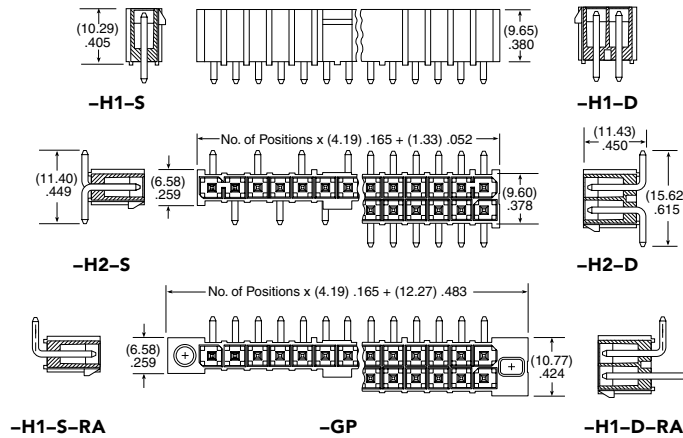
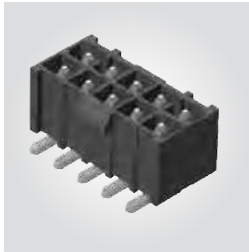
## KEY SPECIFICATIONS

| SERIES        | IPT1/IP51         | IPBT/IPBS                    | HPM/HPW/HPF     | FWJ/HFWJ/FHP    |
|---------------|-------------------|------------------------------|-----------------|-----------------|
| PITCH         | (2.54 mm) .100"   | (4.19 mm) .165"              | (5.08 mm) .200" | (3.96 mm) .156" |
| CCC (1 PIN)*  | 5.9 A             | 10.3 A /pin (2 pins powered) | 16.6 A          | 13.1 A          |
| CCC (2 PINS)* | 4.8 A             | 8.4 A/pin (4 pins powered)   | 14.4 A          | 11.2 A          |
| CCC (3 PINS)* | 4.1 A             | 7.6 A/pin (6 pins powered)   | 13.2 A          | 10.3 A          |
| CREEPAGE      | (2.54 mm) .100"   | (4.27 mm) .168"              | (3.94 mm) .155" | (3.92 mm) .154" |
| CLEARANCE     | (1.91 mm) .075"   | (3.05 mm) .120"              | (3.94 mm) .155" | (2.82 mm) .111" |
| VAC           | 775               | 400                          | 850             | 600             |
| VDC           | 1095              | 565                          | 1200            | 845             |
| CYCLES        | 1000 (MFG Tested) | 100                          | 100             | 100             |

**(4.19 mm) .165" PITCH • ISOLATED POWER CONNECTOR SET**

| IPBT | 1 | NO. OF POSITIONS PER ROW                                      | LEAD STYLE                                      | PLATING OPTION    | ROW OPTION                               | OPTIONS  |
|------|---|---|---|-------------------|--|--|
|      |   | 02, 03, 04, 05, 08, 10<br>15<br>(-D Only)<br>(Standard Sizes) | -H1<br>= Through-hole<br>-H2<br>= Surface Mount | -T<br>= Matte Tin | -S<br>= Single Row<br>-D<br>= Double Row | -RA<br>= Right-angle<br>(Lead Style -H1 only)<br>-GP<br>= Guide Post Holes<br>(Not available with -K)<br>-K<br>= Keyed Polarization (not available with -GP option, is required callout if -GP not called out) |

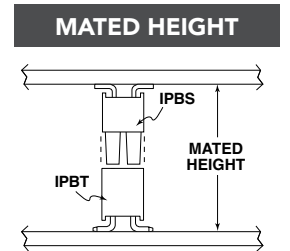
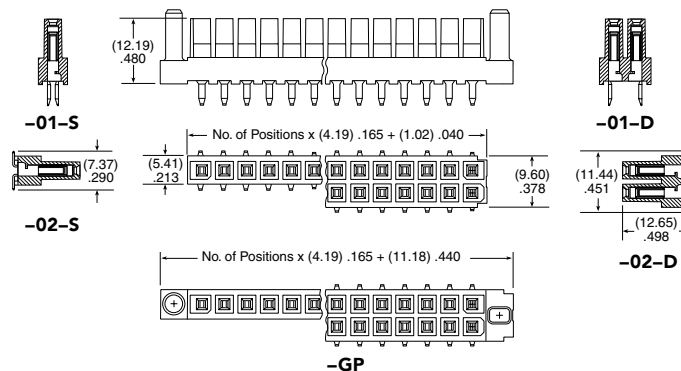
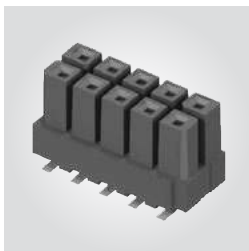
**IPBT**  
Board Mates:  
IPBS  
Cable Mates:  
PMSD, PMSS



| IPBT/IPBS    |                              |
|--------------|------------------------------|
| PINS POWERED | CURRENT RATING (PER CONTACT) |
| 2            | 10.3 A                       |
| 4            | 8.4 A                        |
| 6            | 7.6 A                        |
| 8            | 7.1 A                        |
| 30           | 6.0 A                        |

| IPBS | 1 | NO. OF POSITIONS PER ROW                                      | LEAD STYLE   | PLATING OPTION    | ROW OPTION                               | OPTION              |
|------|---|---|--|-------------------|--|---------------------|
|      |   | 02, 03, 04, 05, 08, 10<br>15<br>(-D Only)<br>(Standard Sizes) | -01<br>= Standard Power<br>-02<br>= Standard Power Surface Mount | -T<br>= Matte Tin | -S<br>= Single Row<br>-D<br>= Double Row | -GP<br>= Guide Post |

**IPBS**  
Board Mates:  
IPBT



| IPBT/IPBS LEAD STYLE | MATED HEIGHT* |
|----------------------|---------------|
| H1/-01               | (15.25) .600  |
| -H2/-02              | (16.84) .663  |

\*Processing conditions will affect mated height.

**Note:**  
Some lengths, styles and options are non-standard, non-returnable.

View complete specifications at: [samtec.com?IPBT](http://samtec.com?IPBT) & [samtec.com?IPBS](http://samtec.com?IPBS)