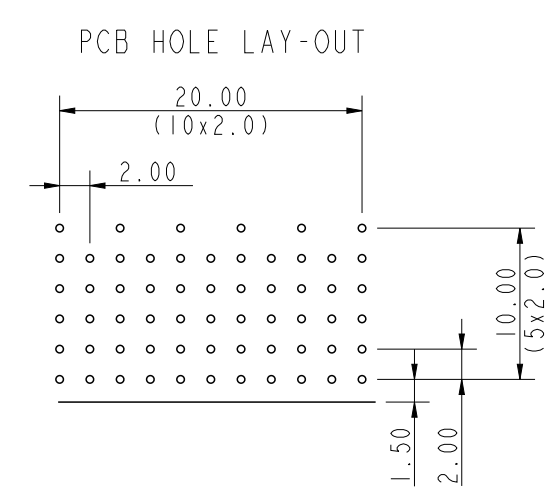
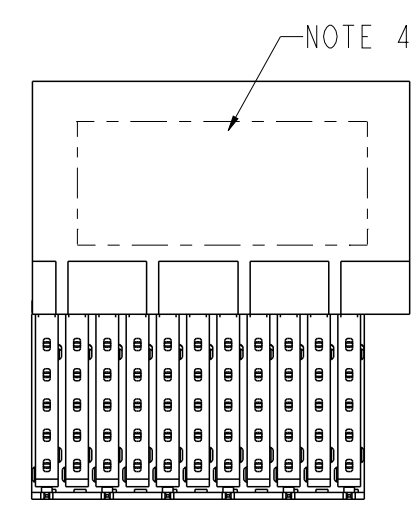
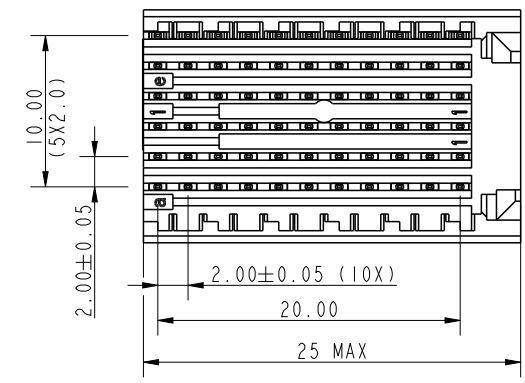
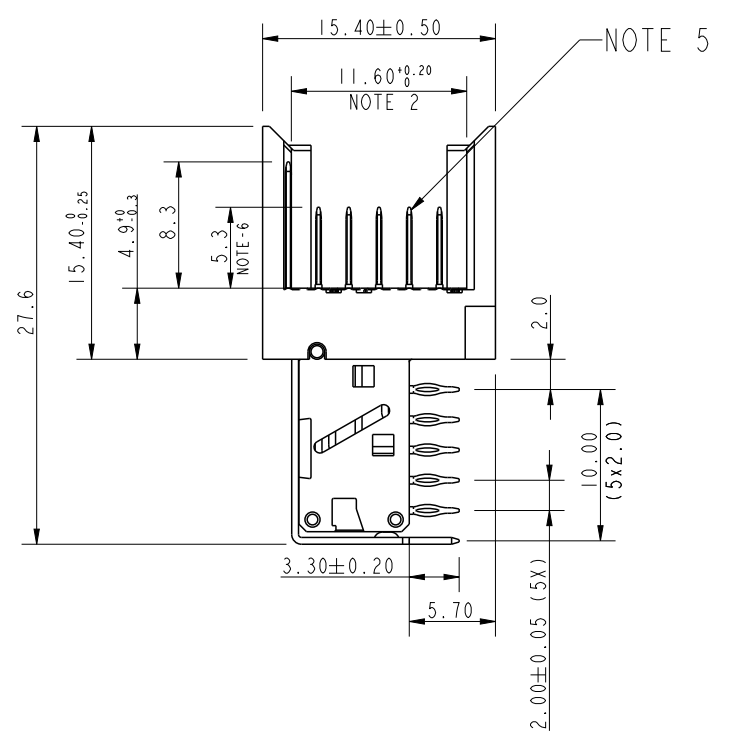


A

B

C

D



PERFORMANCE CHARACTERISTICS :

CURRENT RATING : 1.5A AT 20°C (FULLY LOADED)  
 1A AT 70°C (FULLY LOADED)

RATED VOLTAGE : 500V AC (CONT / CONT)

OPERATING TEMPERATURE : -55°C TO 125°C

CONTACT RESISTANCE : 25mΩ MAX.

INSERTION FORCE : 0.75 N MAX / CONT

EXTRACTION FORCE : 0.15 N MIN / CONT

INSULATION RESISTANCE : 10<sup>4</sup> MΩ MIN.

- NOTES :
- UL APPROVED WITH USR AND CNR.
  - MEASURED AT THE BOTTOM.
  - MATERIAL CONTACT : PHOSPHORBRONZE.  
HOUSING : LCP 30% GLASS-FILLED.
  - CONNECTOR PRINTED WITH P/N AND DATE CODES.
  - FOR ACTUAL CONTACT LOADINGS, SEE LOADING PATTERN MATING SIDE.)
  - 4 = LEVEL 1 (5.30)  
5 = LEVEL 2 (6.80)  
6 = LEVEL 3 (8.30)

7. 'HM2J09PE5118' LEAD FREE INDICATOR : LF = LEAD FREE
- PERFORMANCE LEVEL INDICATOR (Ref DWG No BS,C ,201844,003)
8. FOR RECOMMENDED PTH DIMENSIONS REFER DRAWING : BS,A ,201572,001
9. THIS PRODUCT (LF) MEETS EUROPEAN UNION DIRECTIVES AND OTHER COUNTRY REGULATIONS AS DESCRIBED IN GS-47-0004

LOADING PATTERN : MATING SIDE

F	6	6	6	6	6	6	6	6	6	6	
E	4	4	4	4	4	4	4	4	4	4	
D	4	4	4	4	4	4	4	4	4	4	
C	4	4	4	4	4	4	4	4	4	4	
B	4	4	4	4	4	4	4	4	4	4	
A	4	4	4	4	4	4	4	4	4	4	
Z	0	0	0	0	0	0	0	0	0	0	
	1	2	3	4	5	6	7	8	9	10	11

spec ref	-	dr	P-Mathew Nebu	2011/05/24	projection	mm	size	A3	scale	1/1
tolerance std	ISO 406 ISO 1101	eng	Alex Babu	2019/11/11		← →	ecn no	ELX-I-26926-1		
	TOLERANCES UNLESS OTHERWISE SPECIFIED	chr	-	-			product family	MILLIPACS	rel level	Released
surface	linear	appr	Kuriakose, San	2019/11/12	Amphenol FCI		MPACS RA HDR	dwg no	BSC202767010	
	angular				Type C, Shielded	cat. no.	HM2J09PE5118----	Product - Customer Drw	sheet 1 of 1	
									rev	H