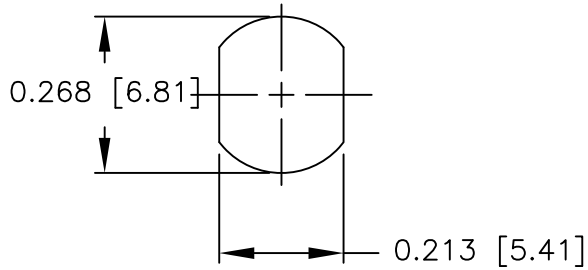


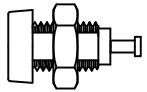
NOTES: UNLESS OTHERWISE SPECIFIED

- CONSTRUCTION:
HANDLE: NYLON. AVAILABLE IN TEN COLORS.
SOCKET: BRIGHT TIN PLATED BRASS.
- PERFORMANCE:
MAXIMUM CURRENT: 10 AMPS
MAXIMUM VOLTAGE: 5700 VRMS
MAXIMUM TEMPERATURE: 200°F (93°C)

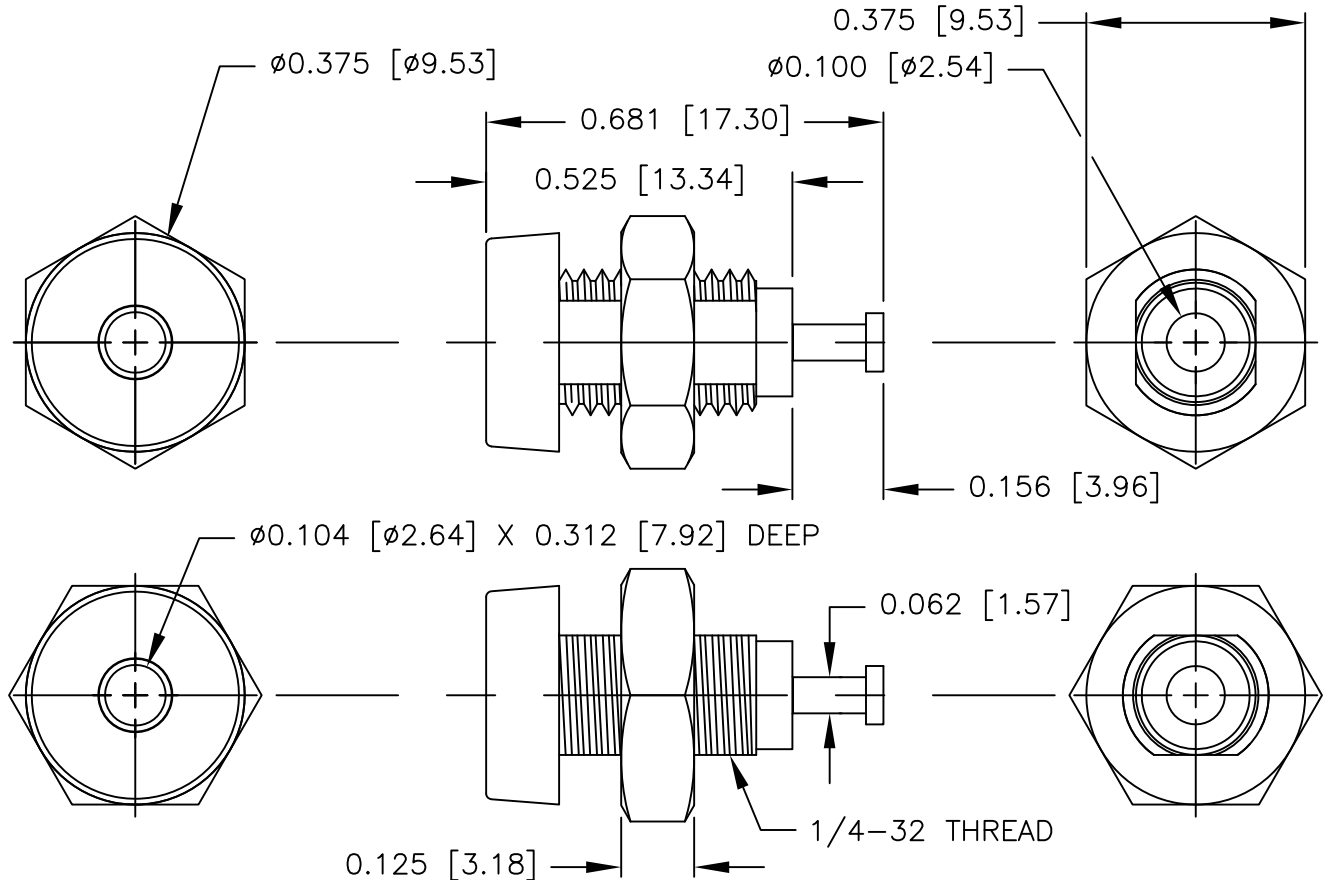
LTR	REVISIONS		DATE	APPROVED
	DESCRIPTION			



MOUNTING HOLE
MAX PANEL THICKNESS: 0.187 [4.75]



ACTUAL SIZE



		UNLESS OTHERWISE SPECIFIED DIMENSIONS ARE IN INCHES TOLERANCES ARE: FRACTIONS DECIMALS ANGLES ± N/A .XX ± N/A ± N/A .XXX ± N/A	CONTRACT NO.		E-Z-HOOK DIVISION OF TEKTEST INC. ARCADIA, CA 91006 U.S.A.				
			APPROVALS	DATE					
		MATERIAL SEE NOTE.	DRAWN	R.L.	11/16	DESCRIPTION MINIATURE BANANA JACK PANEL MOUNT			
			APPROVED BY						
		FINISH SEE NOTE.				SIZE	CODE IDENT NO.	DRAWING NO.	REV.
NEXT ASSY	USED ON					A	08505	9283	
APPLICATION		DO NOT SCALE DRAWING	SCALE			3:1		SHEET 1 OF 1	