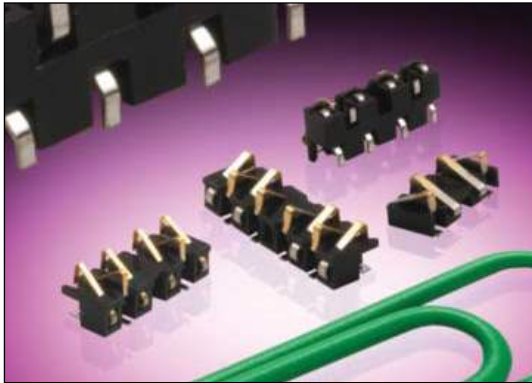


Staggered Stacker: 00-9188-BTB

General Description



The SOLO series 9188 is a one-piece connector used to connect two PCBs in a cost effective manner.

A standard range is available with 4, 6, 8 staggered contacts to suit stack heights of 1.1mm to 2.1mm (see table below).

SOLO Stacker is designed for PCB surface mounting and is supplied in tape and reel packaging. Gold plated pads on the mating PCB or suitable flex circuits provide connection between the two boards.

APPLICATIONS

- Phones
- Scanners
- Radios
- Medical Diagnostic
- Security Devices

FEATURES AND BENEFITS

Single piece connector – no mating half required to connect two boards together which means:

- Reduced assembly time
- Only one part to purchase and stock
- Due to the unique contact design, the mating device does not have to be parallel
- Helps reduce tolerance accumulation within system

ELECTRICAL

- Current Rating: 1 Amp/Contact
- Voltage Rating: 125V
Based on placement distance

ENVIRONMENTAL

- Operating Temperature:
-55°C to +125°C

MECHANICAL

- Insulator Material: High Temperature Plastic; UL94 HB
- Contact Material: Beryllium Copper
- Plating: Gold over Nickel
- Durability: 50 Cycles

HOW TO ORDER

00
Prefix

9188
Series

00X
Number of Ways
004 = 4
006 = 6
008 = 8

0XX
Stack Height

Code	Height	No. of Ways
012	1.1mm to 1.3mm	4 only
020	1.9mm to 2.1mm	4, 6, & 8

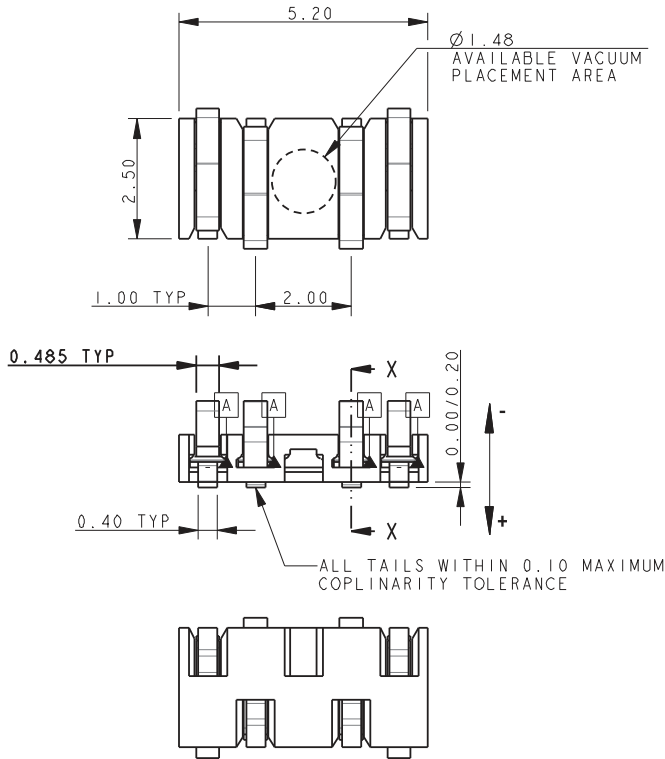
062
Plating Variation
062 = Selective Gold
0.25µm Gold Plated
Contact Nose Pure
Tin Tail



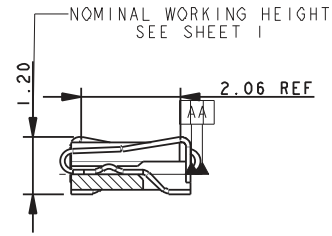
Staggered Stacker: 00-9188-BTB

4 Position 1.2mm

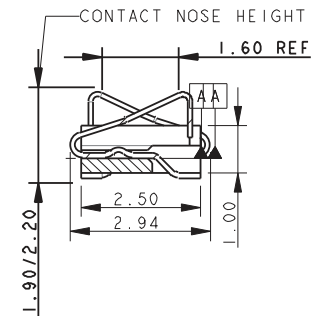
4 WAY STAGGERED STACKER – 1.2MM HEIGHT



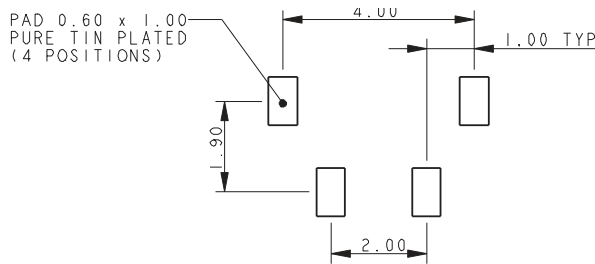
MATING CONDITION



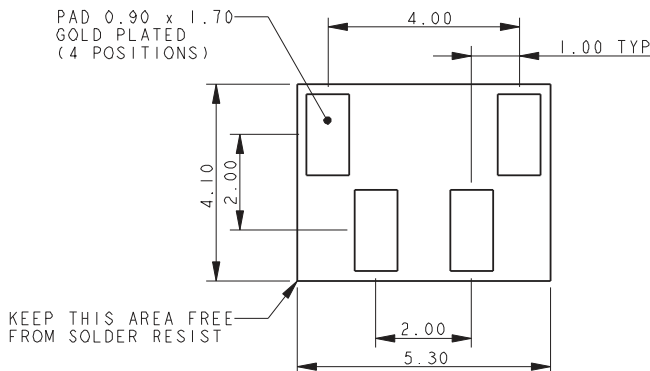
SECTION ON X-X



SMT PCB FOOTPRINT



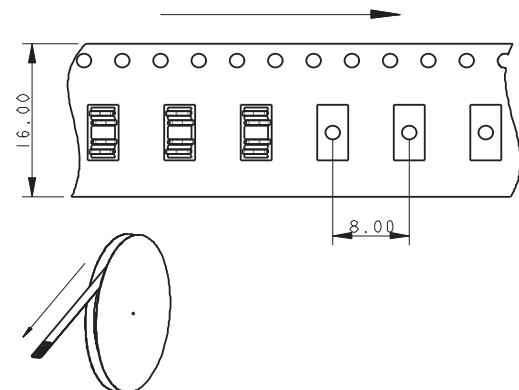
MATING PCB FOOTPRINT



NOTES:

1. GENERAL TOLERANCE ± 0.20 UNLESS SPECIFIED.
2. FOR FULL PRODUCT SPECIFICATION REFER TO ELCO SPECIFICATION 201-01-121.
3. INSULATOR MATERIAL: HIGH TEMPERATURE PLASTIC UL94 HB. COLOR BLACK.
4. CONTACT MATERIAL: COPPER ALLOY.
5. CONTACT PLATING: 1.0 M NICKEL UNDERPLATED. SELECTIVE 0.25 M GOLD ON NOSE. 2.0 TO 4.0 M PURE TIN ON TAILS.
6. PACKING 2000 PIECES ON A 330MM REEL.

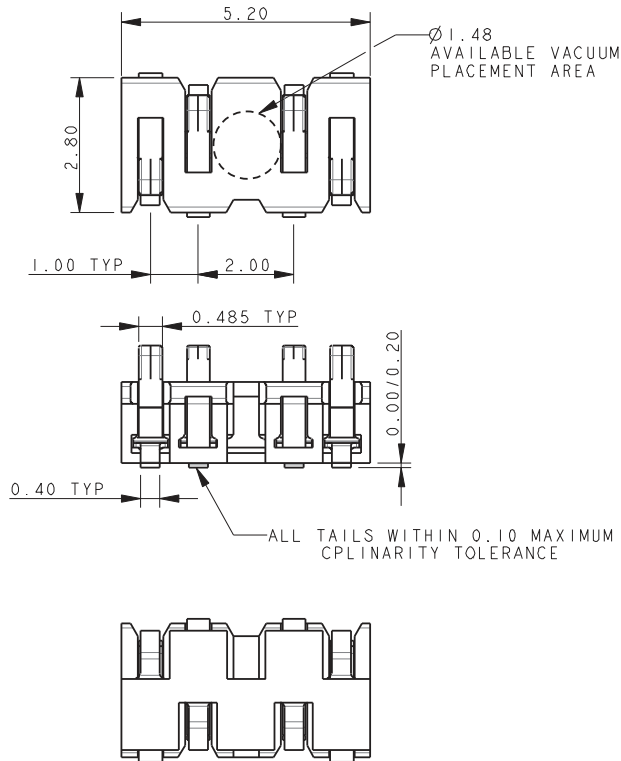
PACKING DETAILS



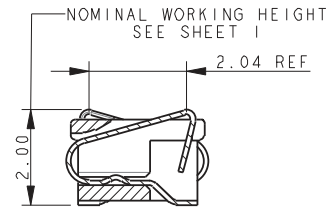
Staggered Stacker: 00-9188-BTB

4 Position 2.0mm

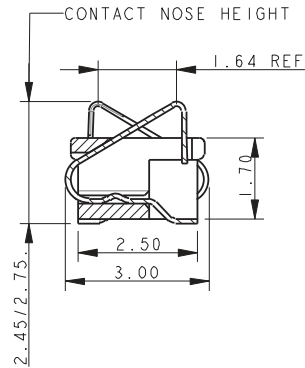
4 WAY STAGGERED STACKER – 2.0MM HEIGHT



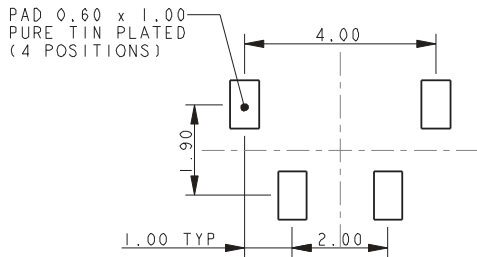
MATING CONDITION



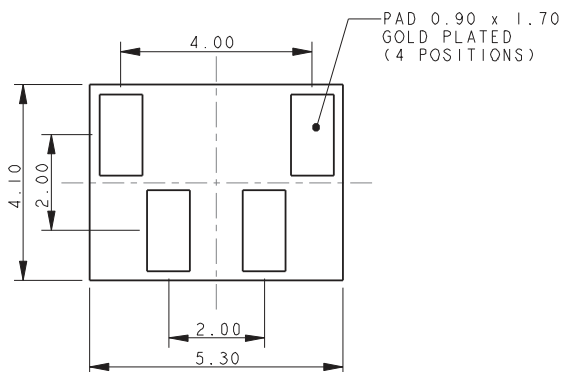
SECTION ON X-X



SMT PCB FOOTPRINT



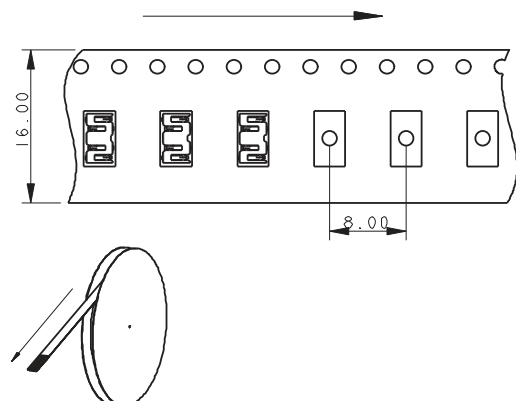
MATING PCB FOOTPRINT



NOTES:

1. GENERAL TOLERANCE ± 0.20 UNLESS SPECIFIED.
2. FOR FULL PRODUCT SPECIFICATION REFER TO ELCO SPECIFICATION 201-01-121.
3. INSULATOR MATERIAL: HIGH TEMPERATURE PLASTIC UL94 HB. COLOR BLACK.
4. CONTACT MATERIAL: COPPER ALLOY.
5. CONTACT PLATING: 1.0 M NICKEL UNDERPLATED. SELECTIVE 0.25 M GOLD ON NOSE. 2.0 TO 4.0 M PURE TIN ON TAILS.
6. PACKING 2000 PIECES ON A 330MM REEL.

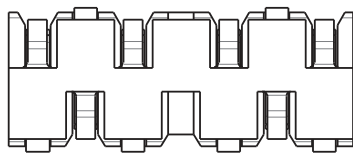
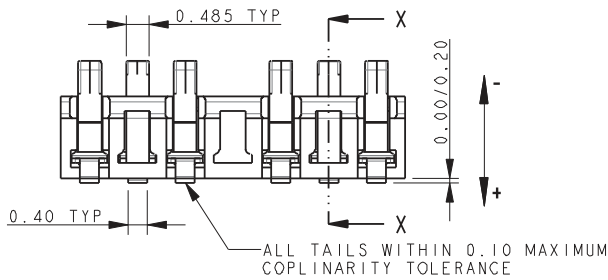
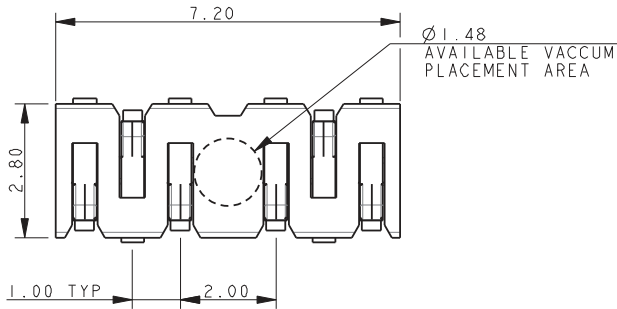
PACKING DETAILS



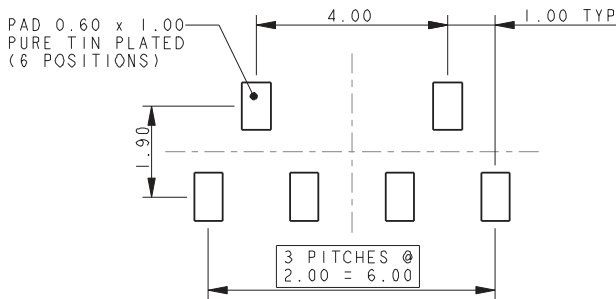
Staggered Stacker: 00-9188-BTB

6 Position 2.0mm

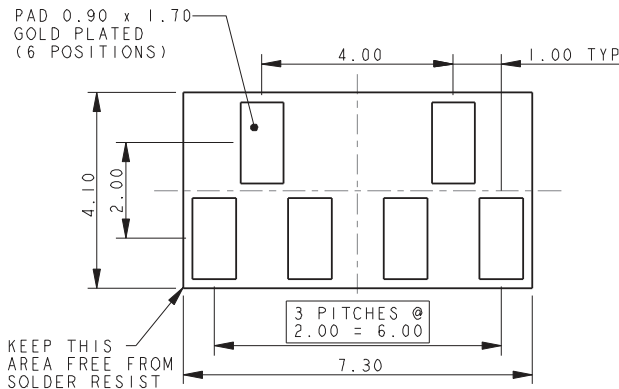
6 WAY STAGGERED STACKER – 2.0MM HEIGHT



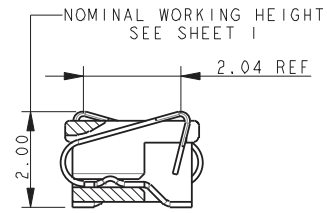
SMT PCB FOOTPRINT



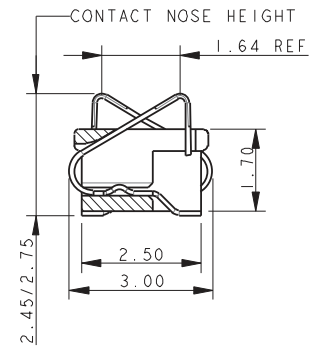
MATING PCB FOOTPRINT



MATING CONDITION



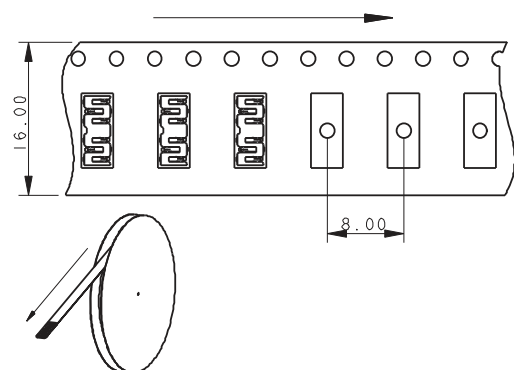
SECTION ON X-X



NOTES:

1. GENERAL TOLERANCE ± 0.20 UNLESS SPECIFIED.
2. FOR FULL PRODUCT SPECIFICATION REFER TO ELCO SPECIFICATION 201-01-121.
3. INSULATOR MATERIAL: HIGH TEMPERATURE PLASTIC UL94 HB. COLOR BLACK.
4. CONTACT MATERIAL: COPPER ALLOY.
5. CONTACT PLATING: 1.0 M NICKEL UNDERPLATED. SELECTIVE 0.25 M GOLD ON NOSE. 2.0 TO 4.0 M PURE TIN ON TAILS.
6. PACKING 2000 PIECES ON A 330MM REEL.

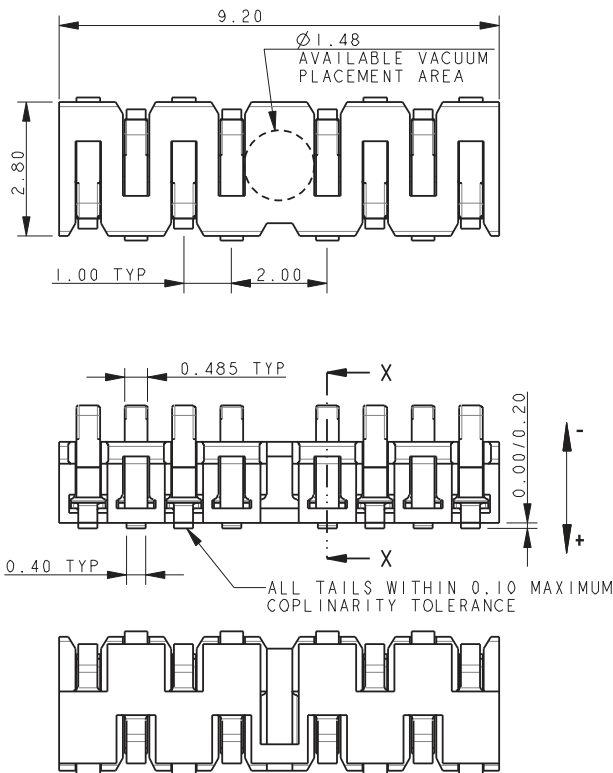
PACKING DETAILS



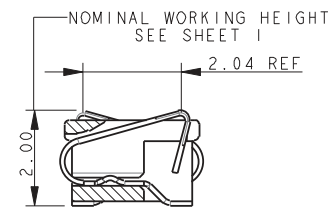
Staggered Stacker: 00-9188-BTB

8 Position 2.0mm

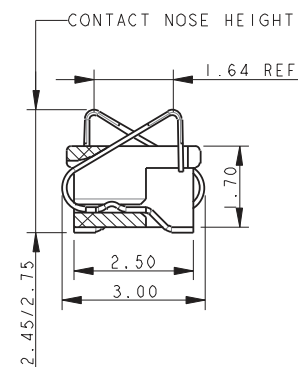
8 WAY STAGGERED STACKER – 2.0MM HEIGHT



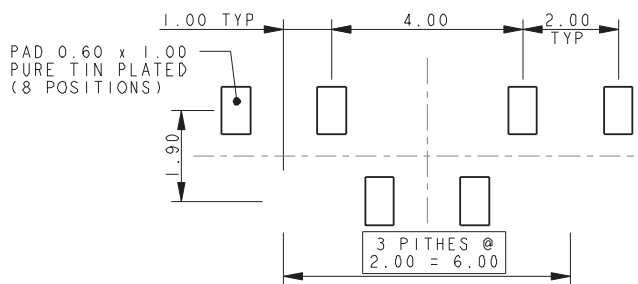
MATING CONDITION



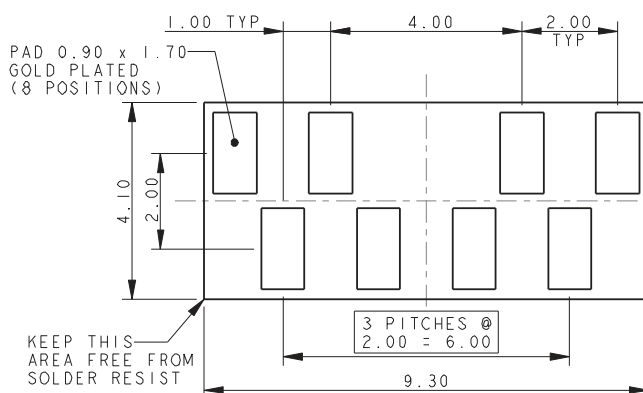
SECTION ON X-X



SMT PCB FOOTPRINT



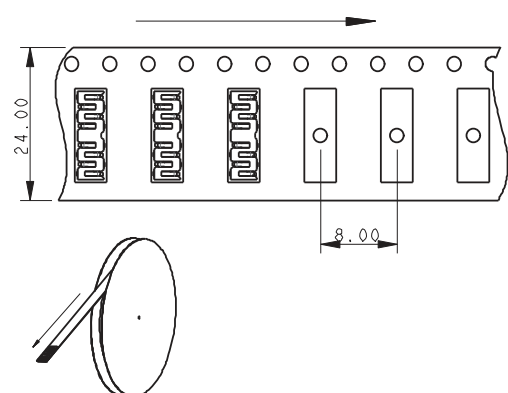
MATING PCB FOOTPRINT



NOTES:

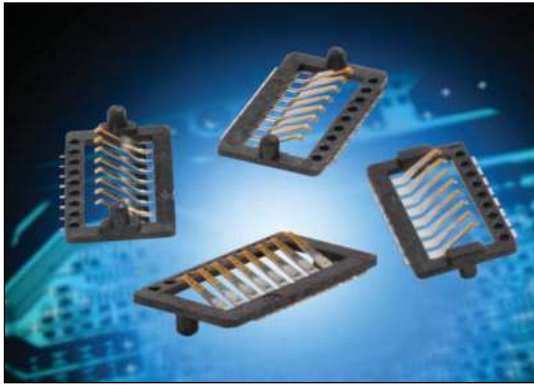
1. GENERAL TOLERANCE ± 0.20 UNLESS SPECIFIED.
2. FOR FULL PRODUCT SPECIFICATION REFER TO ELCO SPECIFICATION 201-01-121.
3. INSULATOR MATERIAL: HIGH TEMPERATURE PLASTIC UL94 HB. COLOR BLACK.
4. CONTACT MATERIAL: COPPER ALLOY.
5. CONTACT PLATING: 1.0 M NICKEL UNDERPLATED. SELECTIVE 0.25 M GOLD ON NOSE. 2.0 TO 4.0 M PURE TIN ON TAILS.
6. PACKING 2000 PIECES ON A 330MM REEL.

PACKING DETAILS



Ultra Low Profile Stacker: 00-9258-BTB

General Description



The SOLO series 9258 is a one-piece connector used to connect two PCBs in a cost effective manner.

This connector is a 1.0mm pitch available in an 8 position with stack heights of 0.40mm and 0.80mm. It is available with or without location bosses.

This connector is designed for PCB surface mounting and is supplied in tape and reel packaging. Gold plated pads on the mating PCB or suitable flex circuits provide connection between the boards.

APPLICATIONS

- Mobile phones
- Handheld scanners
- Portable medical devices
- Display interface

FEATURES AND BENEFITS

Single piece connector – no mating half connector required to connect two boards together which means:

- Reduced assembly time
- Only one part to purchase and stock
- Due to the unique contact design, the mating device does not have to be parallel
- Extremely robust when it comes to shock and vibration

ELECTRICAL

- Current Rating: 1 Amp/Contact
- Voltage Rating: 125V
Based on placement distance

ENVIRONMENTAL

- Operating Temperature:
-55°C to +125°C

MECHANICAL

- Insulator Material: High Temperature Plastic; UL94 V-0
- Contact Material: Beryllium Copper
- Plating: Gold over Nickel
- Durability: 50 Cycles

HOW TO ORDER

00 **9258** **008**
 Prefix Series Number of Ways
 008 = 8

00X

Connector Height

Code	Stack Height	Contact Height	Qty
004	0.40mm	1.00-1.30	No. of Ways
008	0.80mm	1.40-1.70	

06

Plating Variation

06 = Selective Gold
 0.25µm Gold Plated
 Contact Nose Pure
 Tin Tail

X

PCB Location Bosses

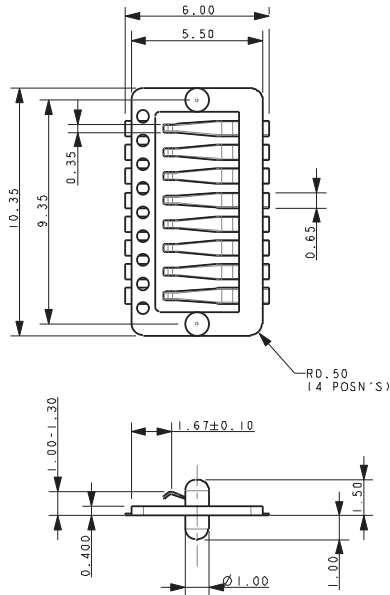
1 = With PCB Location Bosses (top side)
 2 = Without PCB Location Bosses
 3 = With SMT PCB Location Bosses (bottom side)
 4 = With SMT and Mating PCB Location Bosses (top and bottom side)



Ultra Low Profile Stacker: 00-9258-BTB

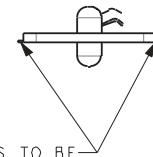
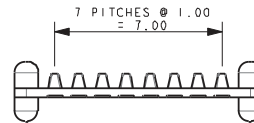
0.4mm

0.4MM ULTRA LOW PROFILE STACKER



NOTES:

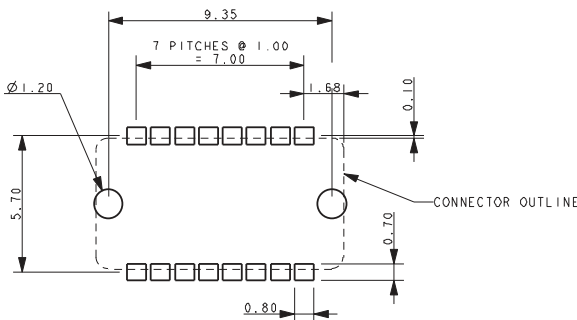
1. 8 WAY ULTRA LOW PROFILE STACKER IN 0.8MM STACK HEIGHT.
2. INSULATOR MATERIAL: NYLON 46 HF5040, 40% GLASS FILLED UL94 V-0. COLOR BLACK.
3. CONTACT MATERIAL; 0.10MM THICK BeCu.
4. CONTACT PLATING: NICKEL UNDERPLATE, SELECTIVE GOLD PLATED CONTACT NOSES PURE TIN PLATED CONTACT SMT TAILS.
5. PARTS TO BE PACKED IN TAPE AND REEL, QTY: 1200.
6. ALL DIMENSIONS FOR REFERENCE UNLESS TOLERANCED.
7. FOR FURTHER INFORMATION REFER TO SPECIFICATION 201-01-115.



ALL TAILS TO BE WITHIN 0.10 MAX COPLANARITY TOLERANCE

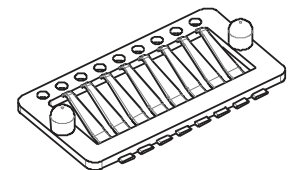
PROPOSED SMT PCB LAYOUT

ALL PADS PURE TIN PLATE



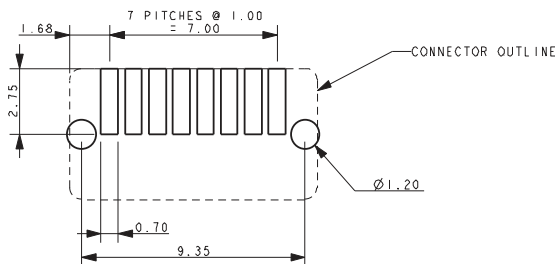
WITH MATING PCB LOCATION BOSSES

(TOP SIDE)



PROPOSED MATING PCB LAYOUT

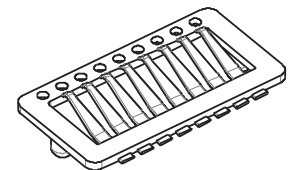
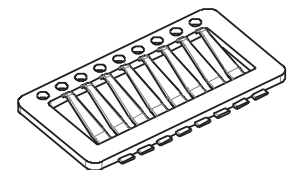
ALL PADS GOLD PLATE



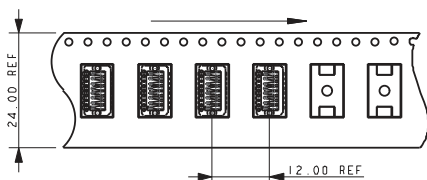
WITHOUT PCB LOCATION BOSSES

WITH SMT PCB LOCATION BOSSES

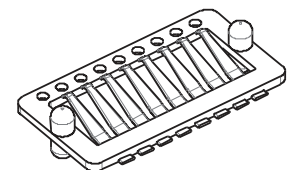
(BOTTOM SIDE)



PACKING TAPE DETAILS



WITH PCB AND SMT LOCATION BOSSES

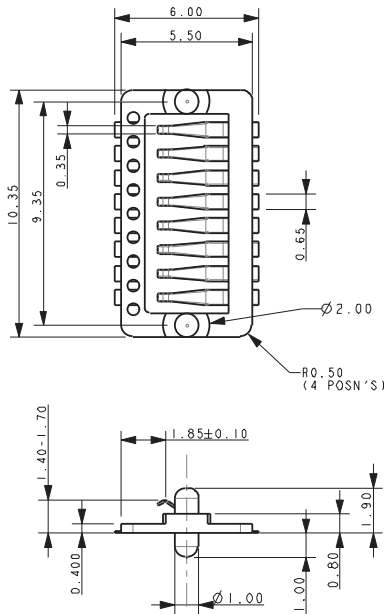


Ultra Low Profile Stacker: 00-9258-BTB

0.8mm

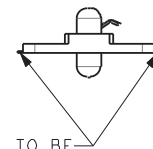
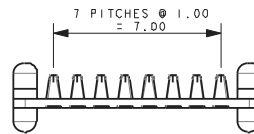


0.8MM ULTRA LOW PROFILE STACKER



NOTES:

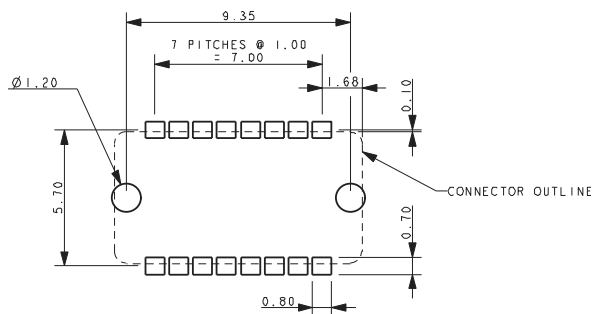
1. 8 WAY ULTRA LOW PROFILE STACKER IN 0.4MM STACK HEIGHT.
2. INSULATOR MATERIAL: NYLON 46 HF5040, 40% GLASS FILLED UL94 V-0. COLOR BLACK.
3. CONTACT MATERIAL; 0.10MM THICK BeCu.
4. CONTACT PLATING: NICKEL UNDERPLATE, SELECTIVE GOLD PLATED CONTACT NOSES PURE TIN PLATED CONTACT SMT TAILS.
5. PARTS TO BE PACKED IN TAPE AND REEL, QTY: 1400.
6. ALL DIMENSIONS FOR REFERENCE UNLESS TOLERANCED.
7. FOR FURTHER INFORMATION REFER TO SPECIFICATION 201-01-115.



ALL TAILS TO BE WITHIN 0.10 MAX COPLANARITY TOLERANCE

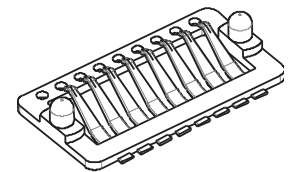
PROPOSED SMT PCB LAYOUT

ALL PADS PURE TIN PLATE



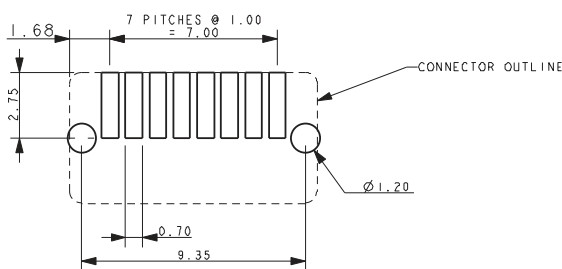
WITH MATING PCB LOCATION BOSSES

(TOP SIDE)



PROPOSED MATING PCB LAYOUT

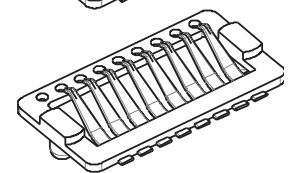
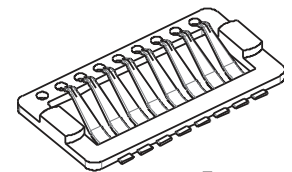
ALL PADS GOLD PLATE



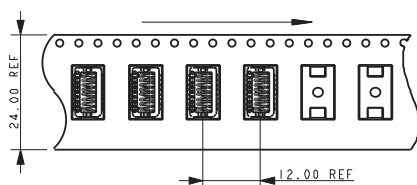
WITHOUT PCB LOCATION BOSSES

WITH SMT PCB LOCATION BOSSES

(BOTTOM SIDE)



PACKING TAPE DETAILS



WITH PCB AND SMT LOCATION BOSSES

