

170071-1001  
APPEARANCE

170071-4001 SHOWN FOR REFERENCE  
APPEARANCE MAY VARY WITH SIZE

NOTES:

1. MATERIAL:

CAGE: NICKEL SILVER  
CONNECTOR HOUSING: GLASS FILLED THERMOPLASTIC, UL: 94V-0, COLOR: BLACK  
TERMINALS: HIGH PERFORMANCE COPPER ALLOY  
FRONT SHIELD WALL: COPPER ALLOY  
ELASTOMERIC GASKET: SILVER IMPREGNATED SILICONE

2. FINISH

TERMINALS: CONTACT AREA: 0.76 μm MIN. HARD GOLD OVER  
3.8 μm MIN. NICKEL.  
COMPLIANT TAIL: 0.7-1.5 μm MATTE TIN OVER  
0.7-1.5 μm NICKEL  
FRONT SHIELD WALL: 0.7-1.5 μm NICKEL OVERALL

3. 2X4 CONFIGURATION SHOWN FOR REFERENCE, SEE CHART FOR AVAILABLE OPTIONS

4. REFER TO PS-170071-0001 FOR ALL ELECTRICAL, MECHANICAL AND ENVIRONMENTAL SPECIFICATIONS.

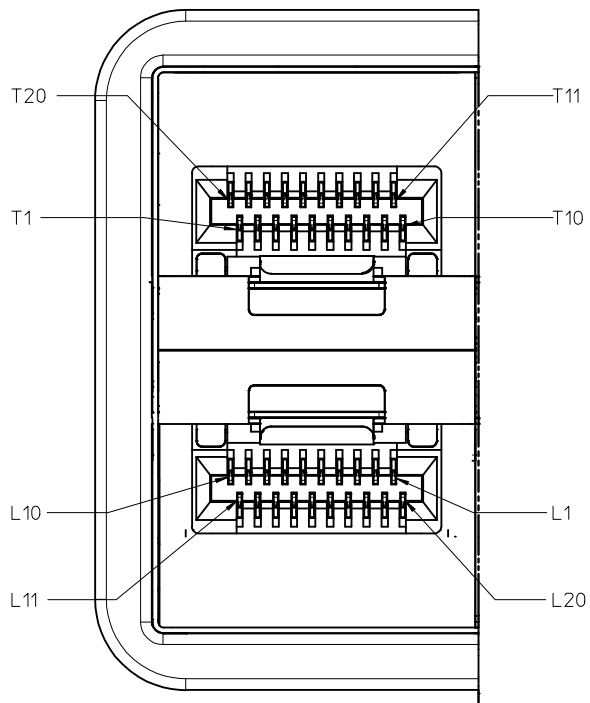
5. REFER TO AS-170071-0001 FOR CONNECTOR MOUNTING AND REWORK INFORMATION.

6. REFER TO AS-170071-0002 FOR PCB ROUTING RECOMMENDATIONS.

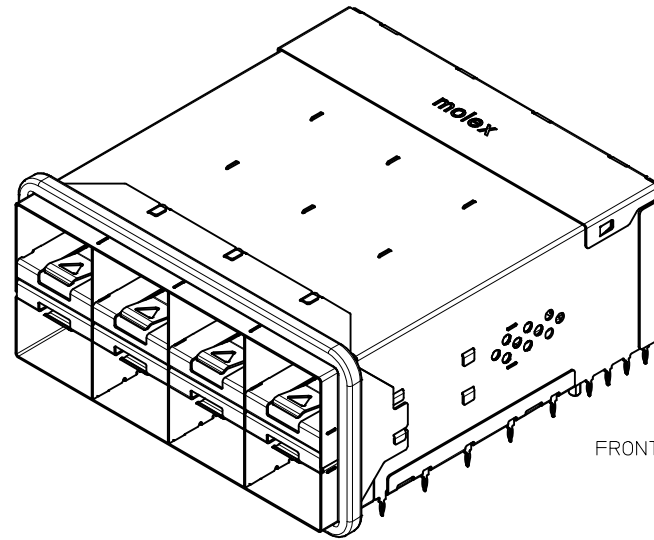
7. ALL VISIBLE EXTERIOR SURFACES TO BE CLASS "B" (BOTTOM OF CONNECTOR IS CLASS "C") CAGE SURFACES TO CONFORM TO THE MOLEX COSMETIC DOC PS-45499-002.

PORT SIZE	PART NUMBER	DIM X	DIM Y
2X1	1700711001	14.50	15.10
2X2	1700712001	28.75	29.35
2X4	1700714001	57.25	57.85
2X6	1700716001	85.75	86.35
2X8	1700718001	114.25	114.85
2X12	1700711201	171.25	171.85

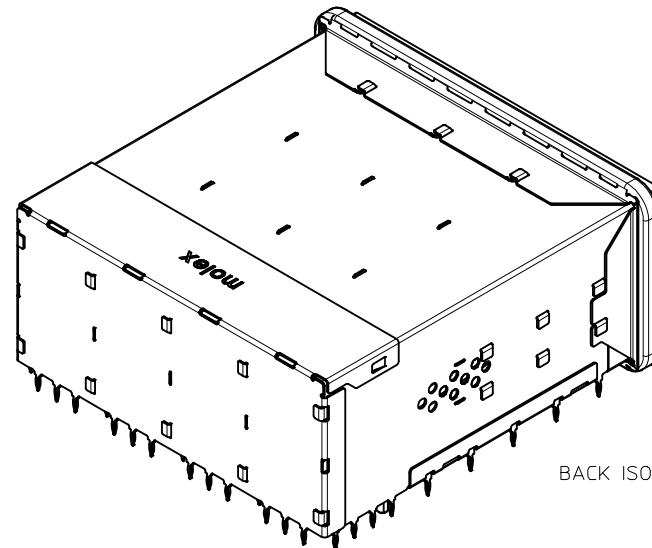
ADDED GENERAL TOL EC NO: UCP2016-3736 DRWINWEMPEGONDA 2016/07/25 CHKD: APPR:SMILLER 2016/08/15	QUALITY SYMBOLS ▽=0 ▽=0 ▽=0	GENERAL TOLERANCES (UNLESS SPECIFIED) <table border="1"> <thead> <tr> <th></th> <th>mm</th> <th>INCH</th> </tr> </thead> <tbody> <tr> <td>4 PLACES</td> <td>± ---</td> <td>± ---</td> </tr> <tr> <td>3 PLACES</td> <td>± ---</td> <td>± ---</td> </tr> <tr> <td>2 PLACES</td> <td>± 0.13</td> <td>± ---</td> </tr> <tr> <td>1 PLACE</td> <td>± 0.25</td> <td>± ---</td> </tr> <tr> <td>0 PLACE</td> <td>±</td> <td>±</td> </tr> </tbody> </table>		mm	INCH	4 PLACES	± ---	± ---	3 PLACES	± ---	± ---	2 PLACES	± 0.13	± ---	1 PLACE	± 0.25	± ---	0 PLACE	±	±	DIMENSION STYLE <b>MM ONLY</b> DRAWN BY DATE JGONZALEZ01 2010/05/27 CHECKED BY DATE JKACHLIC 2010/06/03 APPROVED BY DATE MBANAKIS 2010/10/24	SCALE <b>2:1</b> DESIGN UNITS <b>METRIC</b> THIRD ANGLE PROJECTION	TITLE <b>ZSFP+ STACKED FULL ASSY WITH ELASTOMERIC GASKET</b> <b>molex</b> DOCUMENT NO. <b>SD-170071-0001</b>	SHEET NO. <b>1 OF 4</b>
		mm	INCH																					
	4 PLACES	± ---	± ---																					
	3 PLACES	± ---	± ---																					
2 PLACES	± 0.13	± ---																						
1 PLACE	± 0.25	± ---																						
0 PLACE	±	±																						
DRAFT WHERE APPLICABLE MUST REMAIN WITHIN DIMENSIONS		MATERIAL NO. <b>SEE CHART</b>	THIS DRAWING CONTAINS INFORMATION THAT IS PROPRIETARY TO MOLEX INCORPORATED AND SHOULD NOT BE USED WITHOUT WRITTEN PERMISSION																					
		ANGULAR ±1/2°																						
		SIZE C																						



Partial1  
SCALE 6:1

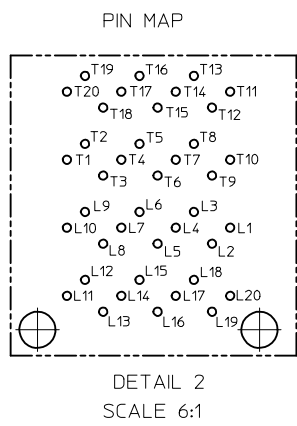
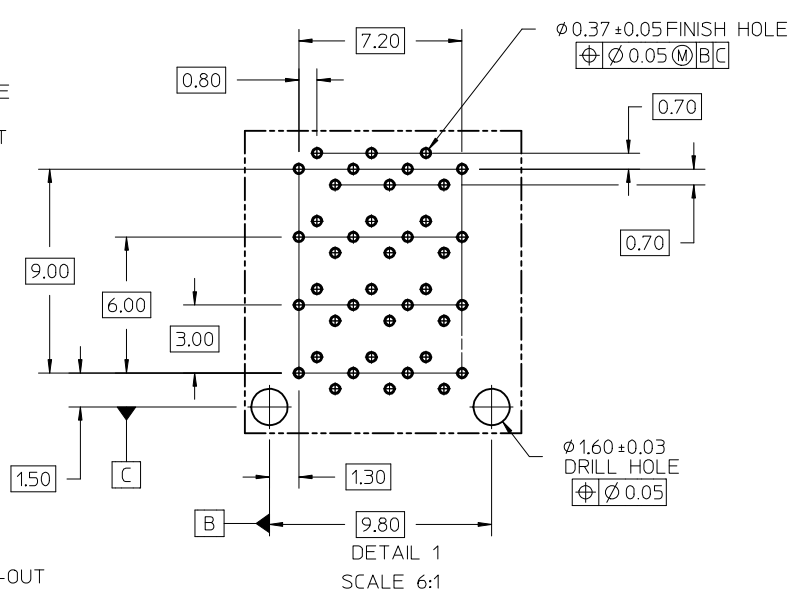
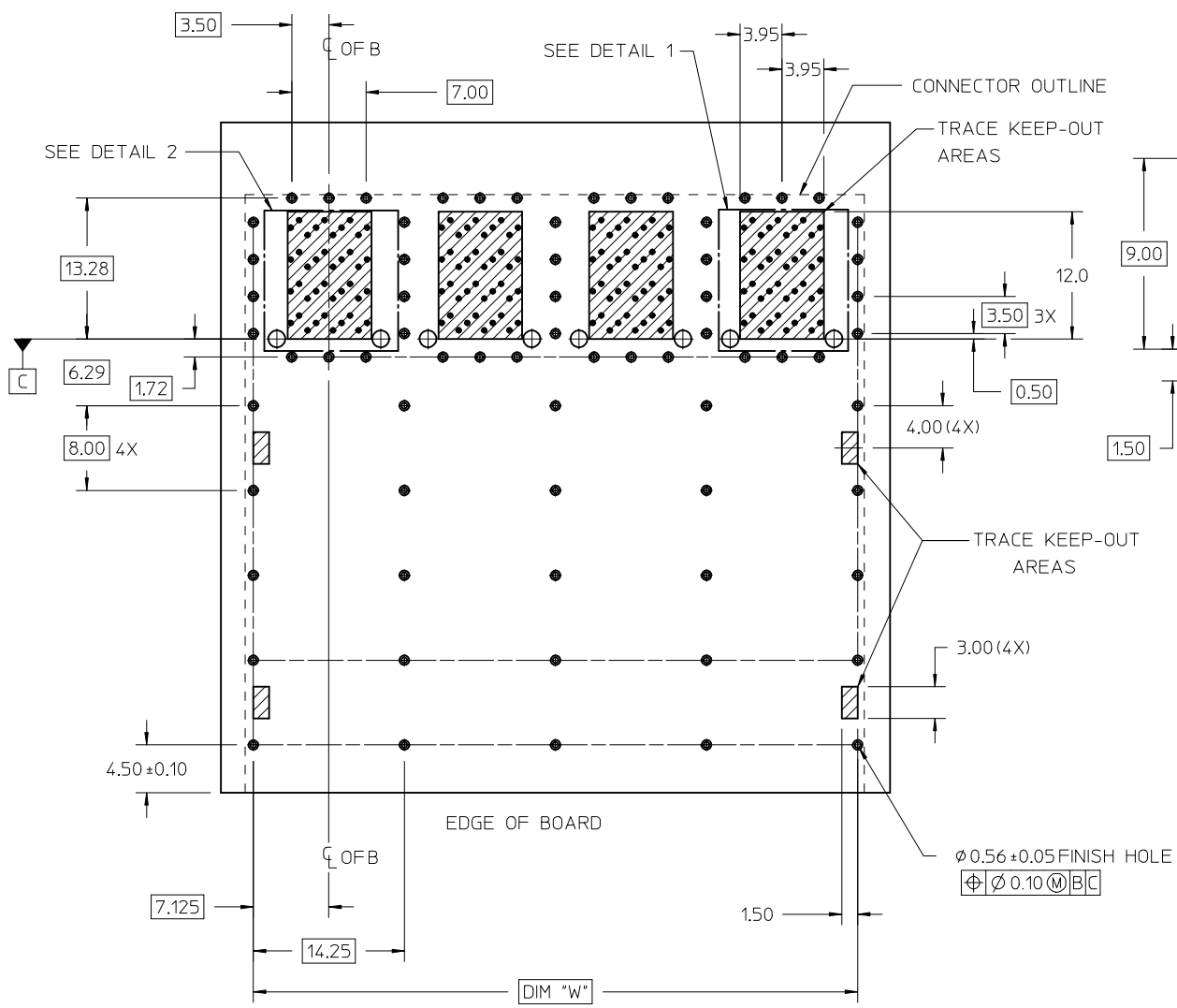


FRONT ISO VIEW



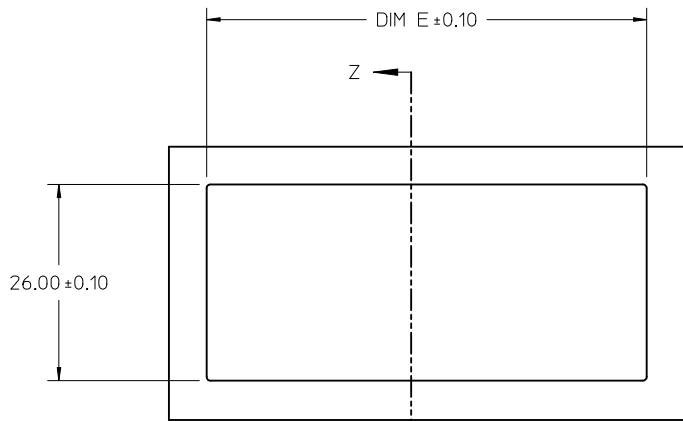
BACK ISO VIEW

SEE SHEET 1 EC NO: UCP2016-3736 DRAWN: MKEPECOWDA 2016/07/25 CHKD: APPR: SMILLER 2016/08/15	QUALITY SYMBOLS	GENERAL TOLERANCES (UNLESS SPECIFIED)	DIMENSION STYLE	SCALE	DESIGN UNITS	THIRD ANGLE PROJECTION
	▽=0	mm INCH	MM ONLY	2:1	METRIC	THIRD ANGLE PROJECTION
	▽=0	4 PLACES ± --- ± ---	DRAWN BY DATE	TITLE		
	▽=0	3 PLACES ± --- ± ---	JKACHLIC 2010/06/03	ZSFP+ STACKED FULL ASSY WITH ELASTOMERIC GASKET		
	▽=0	2 PLACES ± 0.13 ± ---	MBANAKIS 2010/10/24			
	1 PLACE ± 0.25 ± ---	ANGULAR ±1/2°	SEE CHART	DOCUMENT NO.	SHEET NO.	
	0 PLACE ± ±	DRAFT WHERE APPLICABLE MUST REMAIN WITHIN DIMENSIONS	SIZE C	SD-170071-0001	2 OF 4	
			THIS DRAWING CONTAINS INFORMATION THAT IS PROPRIETARY TO MOLEX INCORPORATED AND SHOULD NOT BE USED WITHOUT WRITTEN PERMISSION			

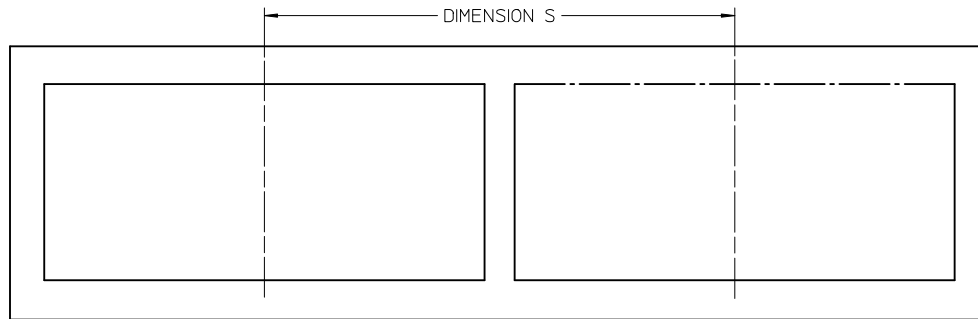
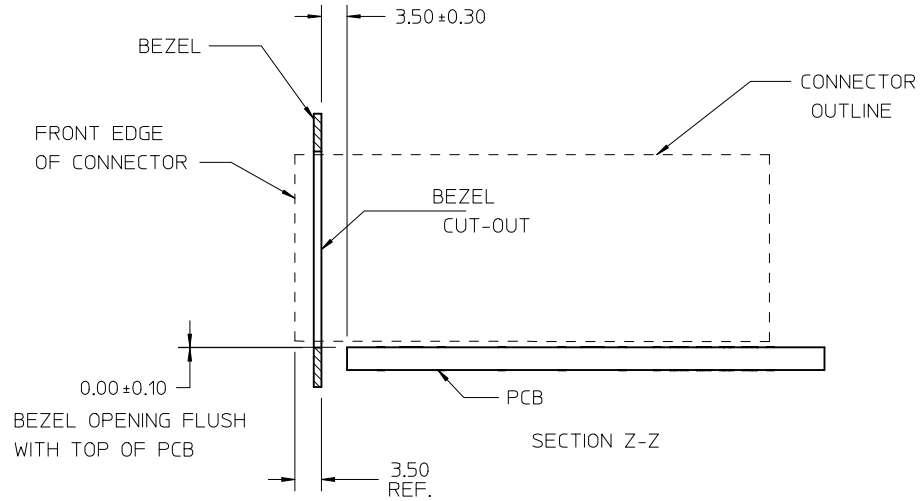


HOLE CHART				
PORT SIZE	DIM "W"	SIGNALS (Ø0.37)	SHIELD GROUND (Ø0.56)	CONNECTOR LOCATION (Ø1.60)
2X1	14.25	40	24	2
2X2	28.50	80	39	4
2X4	57.00	160	69	8
2X6	85.50	240	99	12
2X8	114.00	320	129	16
2X12	171.00	480	189	24

<b>SEE SHEET 1</b> EC NO: UCP2016-3736 DRW:MKP/EGONDA 2016/07/25 CHKD: APPR:SMILLER 2016/08/15	QUALITY SYMBOLS $\nabla = 0$ $\nabla = 0$ $\nabla = 0$	GENERAL TOLERANCES (UNLESS SPECIFIED) <table border="1"> <tr> <th></th> <th>mm</th> <th>INCH</th> </tr> <tr> <td>4 PLACES</td> <td>± 0.13</td> <td>± 0.005</td> </tr> <tr> <td>3 PLACES</td> <td>± 0.25</td> <td>± 0.010</td> </tr> <tr> <td>2 PLACES</td> <td>± 0.38</td> <td>± 0.015</td> </tr> <tr> <td>1 PLACE</td> <td>± 0.51</td> <td>± 0.020</td> </tr> <tr> <td>0 PLACE</td> <td>± 0.64</td> <td>± 0.025</td> </tr> </table>		mm	INCH	4 PLACES	± 0.13	± 0.005	3 PLACES	± 0.25	± 0.010	2 PLACES	± 0.38	± 0.015	1 PLACE	± 0.51	± 0.020	0 PLACE	± 0.64	± 0.025	DIMENSION STYLE <b>MM ONLY</b> DRAWN BY DATE JGONZALEZ01 2010/05/27 CHECKED BY DATE JKACHLIC 2010/06/03 APPROVED BY DATE MBANAKIS 2010/10/24	SCALE <b>3:1</b> DESIGN UNITS <b>METRIC</b> THIRD ANGLE PROJECTION	TITLE <b>ZSFP+ STACKED FULL ASSY WITH ELASTOMERIC GASKET</b>
		mm	INCH																				
	4 PLACES	± 0.13	± 0.005																				
	3 PLACES	± 0.25	± 0.010																				
2 PLACES	± 0.38	± 0.015																					
1 PLACE	± 0.51	± 0.020																					
0 PLACE	± 0.64	± 0.025																					
DRAFT WHERE APPLICABLE MUST REMAIN WITHIN DIMENSIONS		MATERIAL NO. <b>SEE CHART</b>	DOCUMENT NO. <b>SD-170071-0001</b>																				
THIS DRAWING CONTAINS INFORMATION THAT IS PROPRIETARY TO MOLEX INCORPORATED AND SHOULD NOT BE USED WITHOUT WRITTEN PERMISSION					SHEET NO. <b>3 OF 4</b>																		



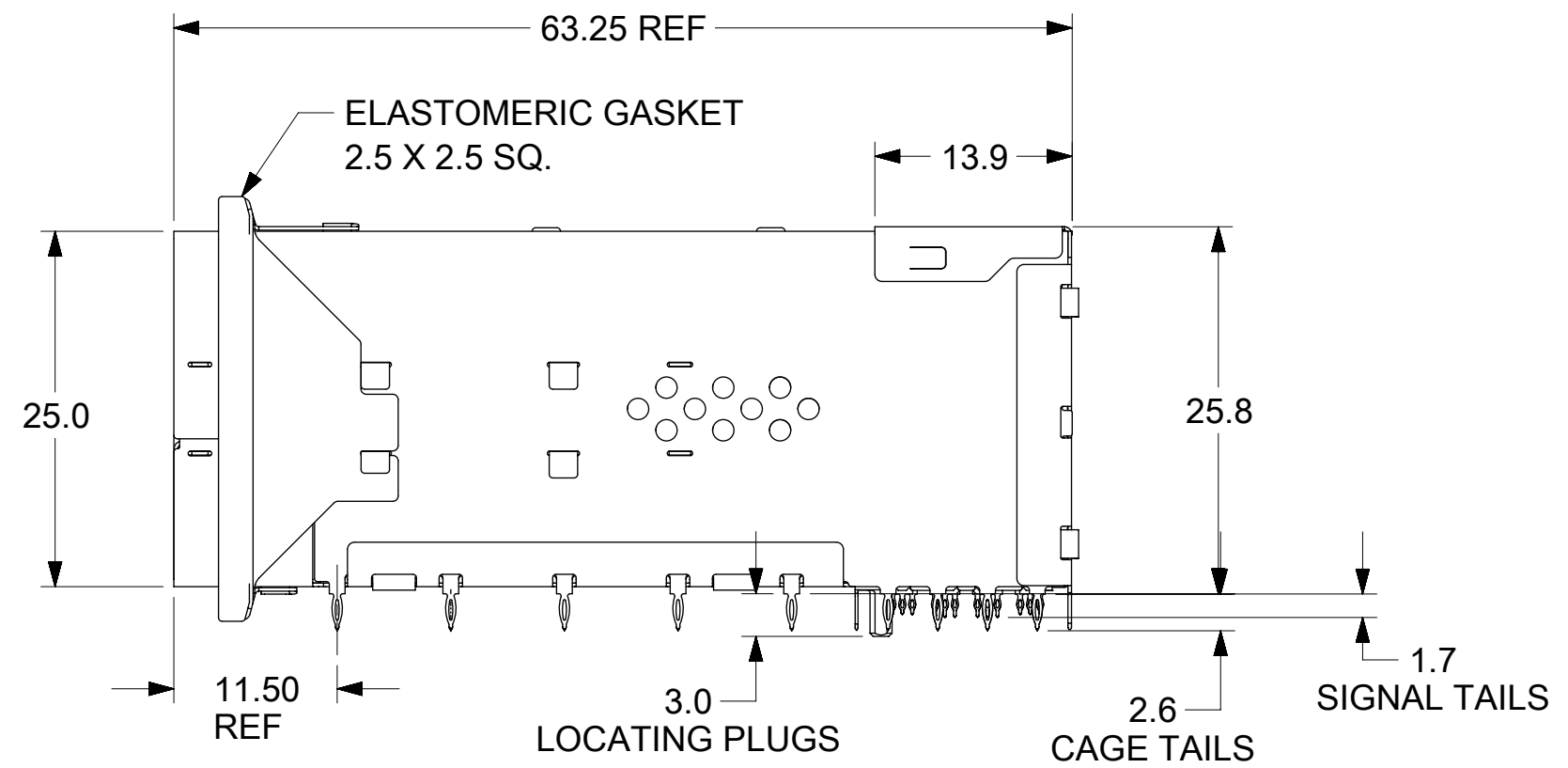
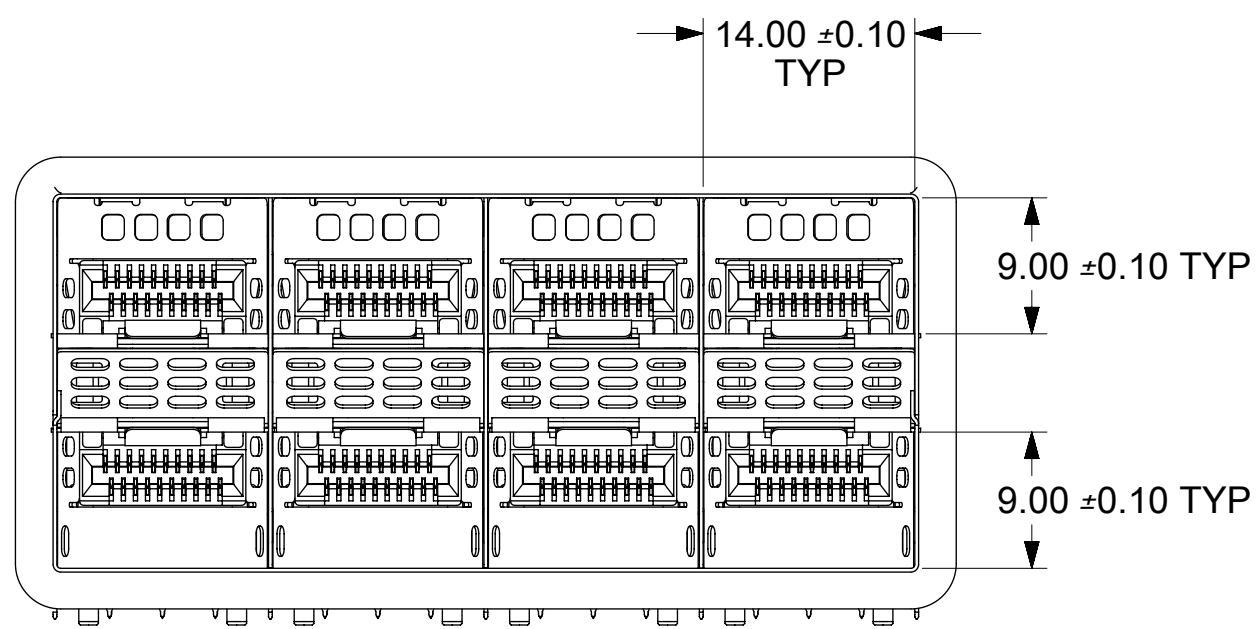
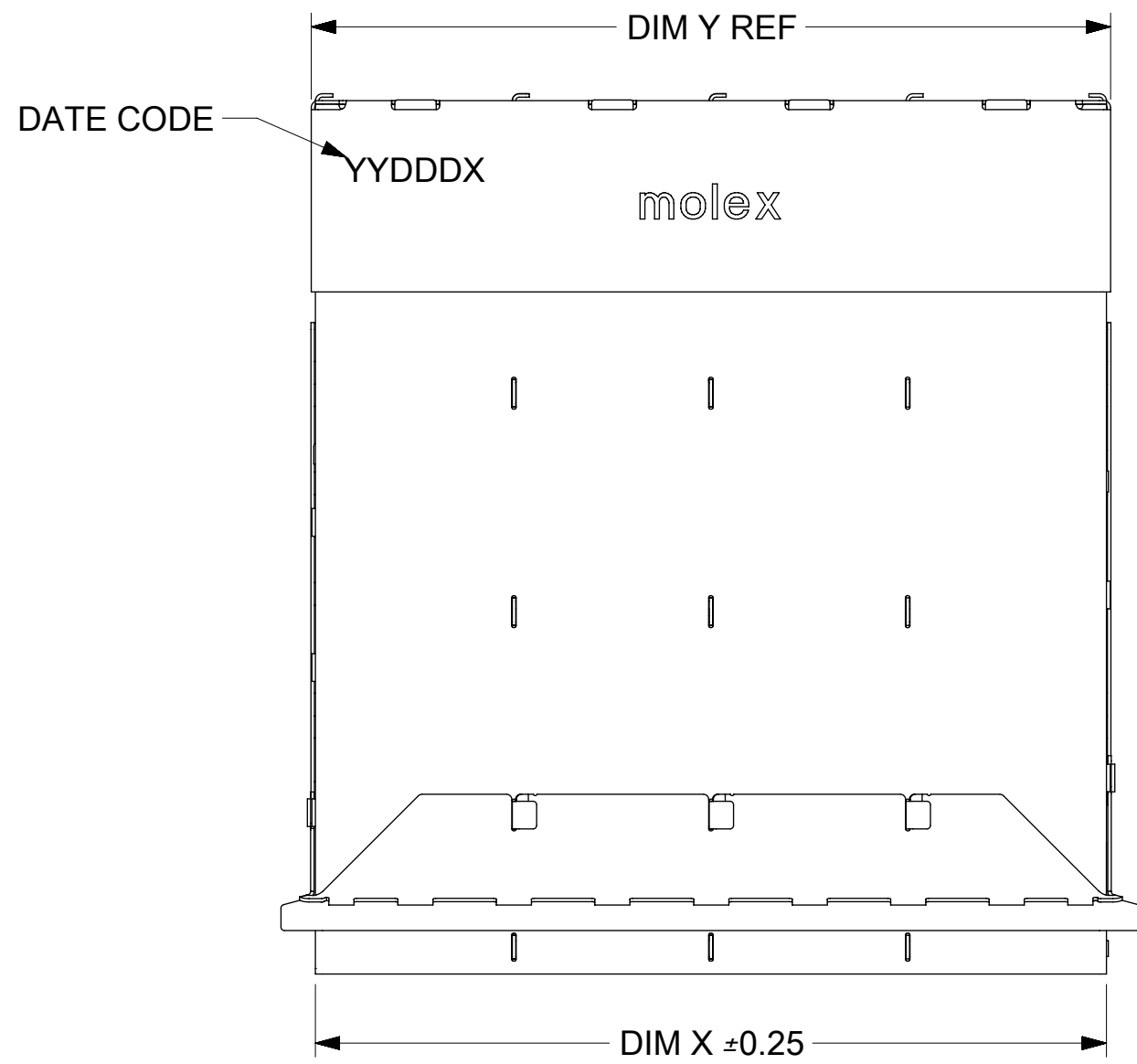
BEZEL CUT-OUT DETAIL  
BEZEL THICKNESS 0.8-2.6



BEZEL CUT OUT FOR  
CONNECTOR STACKING

CONFIGURATION	DIM 'E'	DIM 'S'
2X1	15.50	20.40 MINIMUM
2X2	29.75	34.65 MINIMUM
2X4	58.25	63.15 MINIMUM
2X6	86.75	91.65 MINIMUM
2X8	115.25	120.15 MINIMUM
2X12	172.25	177.15 MINIMUM

<b>SEE SHEET 1</b> EC NO: UCP2016-3736 DRWING: KEMPEGONDA 2016/07/25 CHKD: MBANAKIS APPR: SMILLER 2016/08/15	QUALITY SYMBOLS 	GENERAL TOLERANCES (UNLESS SPECIFIED) <table border="1"> <tr> <td></td> <td>mm</td> <td>INCH</td> </tr> <tr> <td>4 PLACES</td> <td>± 0.10</td> <td>± 0.004</td> </tr> <tr> <td>3 PLACES</td> <td>± 0.13</td> <td>± 0.005</td> </tr> <tr> <td>2 PLACES</td> <td>± 0.25</td> <td>± 0.010</td> </tr> <tr> <td>1 PLACE</td> <td>± 0.38</td> <td>± 0.015</td> </tr> <tr> <td>0 PLACE</td> <td>± 0.51</td> <td>± 0.020</td> </tr> </table>		mm	INCH	4 PLACES	± 0.10	± 0.004	3 PLACES	± 0.13	± 0.005	2 PLACES	± 0.25	± 0.010	1 PLACE	± 0.38	± 0.015	0 PLACE	± 0.51	± 0.020	DIMENSION STYLE <b>MM ONLY</b> DRAWN BY: JGONZALEZ01 DATE: 2010/05/27 CHECKED BY: JKACHLIC DATE: 2010/06/03 APPROVED BY: MBANAKIS DATE: 2010/10/24	SCALE: 2:1 DESIGN UNITS: METRIC THIRD ANGLE PROJECTION	TITLE: <b>ZSFP+ STACKED FULL ASSY WITH ELASTOMERIC GASKET</b>
		mm	INCH																				
	4 PLACES	± 0.10	± 0.004																				
	3 PLACES	± 0.13	± 0.005																				
2 PLACES	± 0.25	± 0.010																					
1 PLACE	± 0.38	± 0.015																					
0 PLACE	± 0.51	± 0.020																					
MATERIAL NO. <b>SEE CHART</b>	DOCUMENT NO. <b>SD-170071-0001</b>	SHEET NO. <b>4 OF 4</b>																					
DRAFT WHERE APPLICABLE MUST REMAIN WITHIN DIMENSIONS			THIS DRAWING CONTAINS INFORMATION THAT IS PROPRIETARY TO MOLEX INCORPORATED AND SHOULD NOT BE USED WITHOUT WRITTEN PERMISSION																				
SIZE:																							



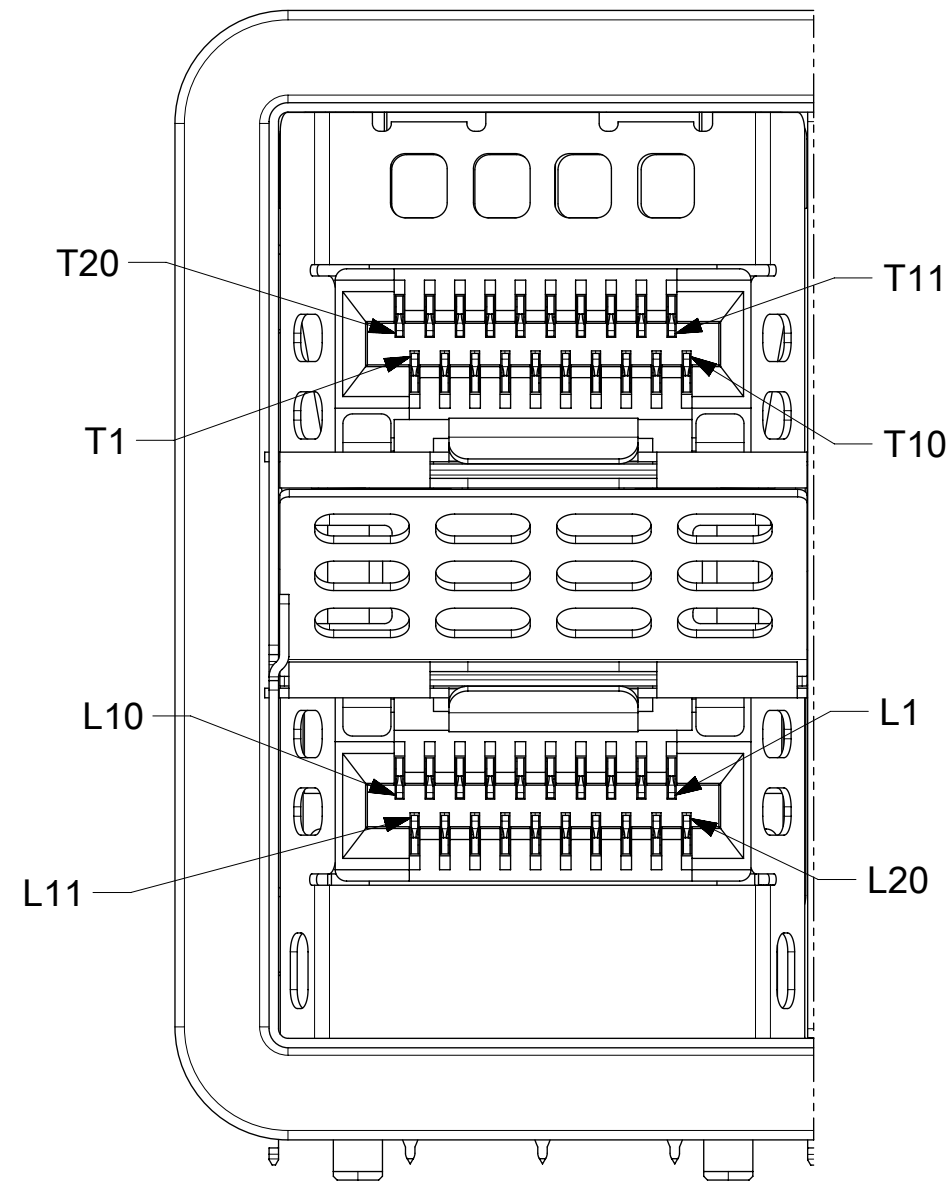
170071-4004 SHOWN FOR REFERENCE  
 APPEARANCE MAY VARY WITH SIZE

NOTES:

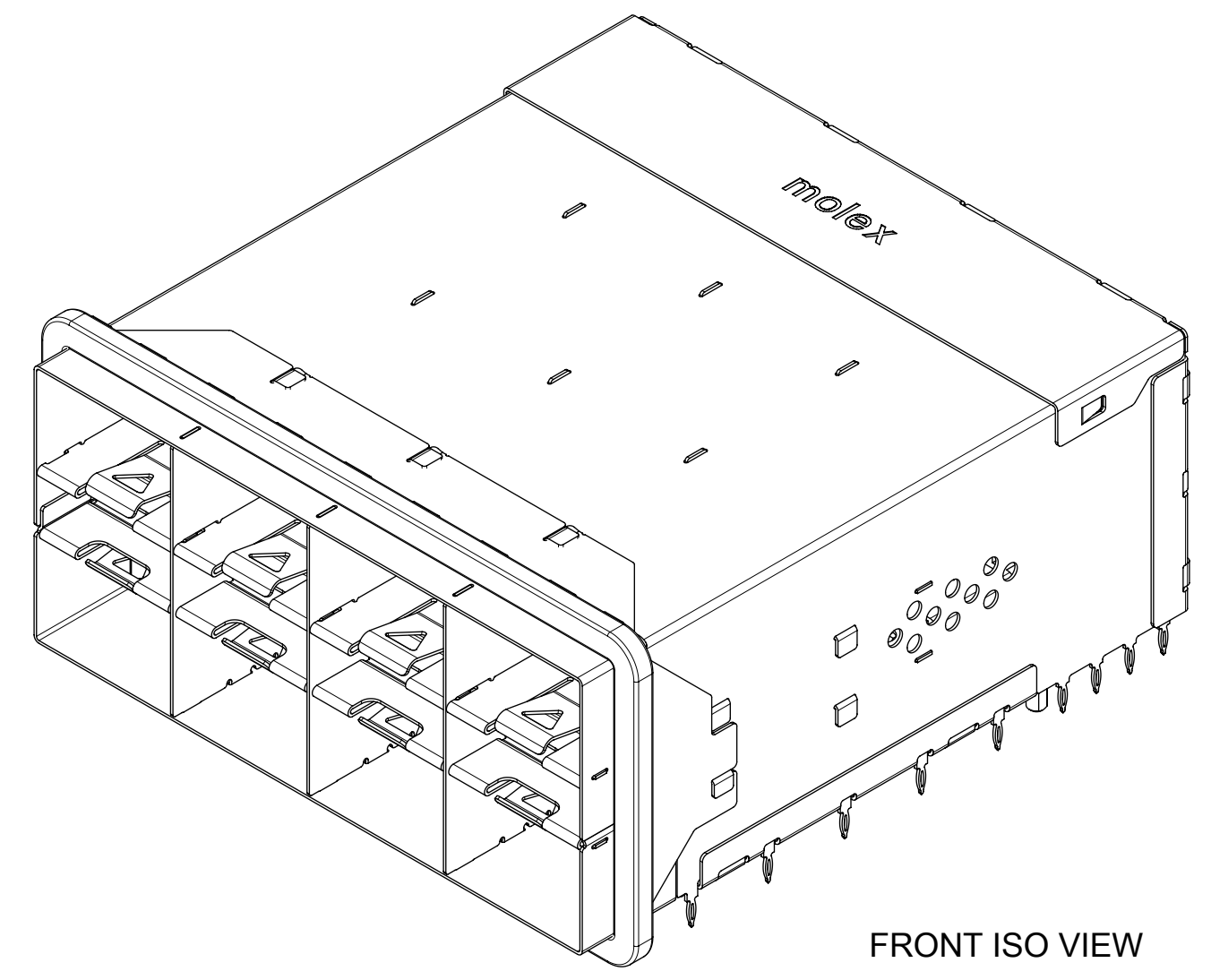
1. MATERIAL:  
 CAGE: NICKEL SILVER  
 CONNECTOR HOUSING: GLASS FILLED THERMOPLASTIC, UL: 94V-0, COLOR: BLACK  
 TERMINALS: HIGH PERFORMANCE COPPER ALLOY  
 FRONT SHIELD WALL: COPPER ALLOY  
 ELASTOMERIC GASKET: SILVER IMPREGNATED SILICONE
2. FINISH  
 TERMINALS: CONTACT AREA: 0.76 μm MIN. HARD GOLD OVER 3.8 μm MIN. NICKEL.  
 COMPLIANT TAIL: 0.7-1.5 μm MATTE TIN OVER 0.7-1.5 μm NICKEL.  
 FRONT SHIELD WALL: 0.7-1.5 μm NICKEL OVERALL
3. 2X4 CONFIGURATION SHOWN FOR REFERENCE, SEE CHART FOR AVAILABLE OPTIONS.
4. REFER TO PS-170071-0001 FOR ALL ELECTRICAL, MECHANICAL AND ENVIRONMENTAL SPECIFICATIONS.
5. REFER TO AS-170071-0001 FOR CONNECTOR MOUNTING AND REWORK INFORMATION.
6. REFER TO AS-170071-0002 FOR PCB ROUTING RECOMMENDATIONS.
7. ALL SURFACES CLASS "C" PER MOLEX COSMETIC SPECIFICATION ES-171233-0001.
8. DATE CODE LOCATION SHOWN. DATE CODE FORMAT: YYDDDX.  
 YY= LAST TWO DIGITS OF YEAR.  
 DDD= DAY OF THE YEAR  
 X= MOLEX INTERNAL CONTROL

PORT SIZE	PART NUMBER	DIM X	DIM Y
2X1	170071-1004	14.50	15.10
2X2	170071-2004	28.75	29.35
2X4	170071-4004	57.25	57.85
2X6	170071-6004	85.75	86.35
2X8	170071-8004	114.25	114.85
2X12	170071-1204	171.25	171.85

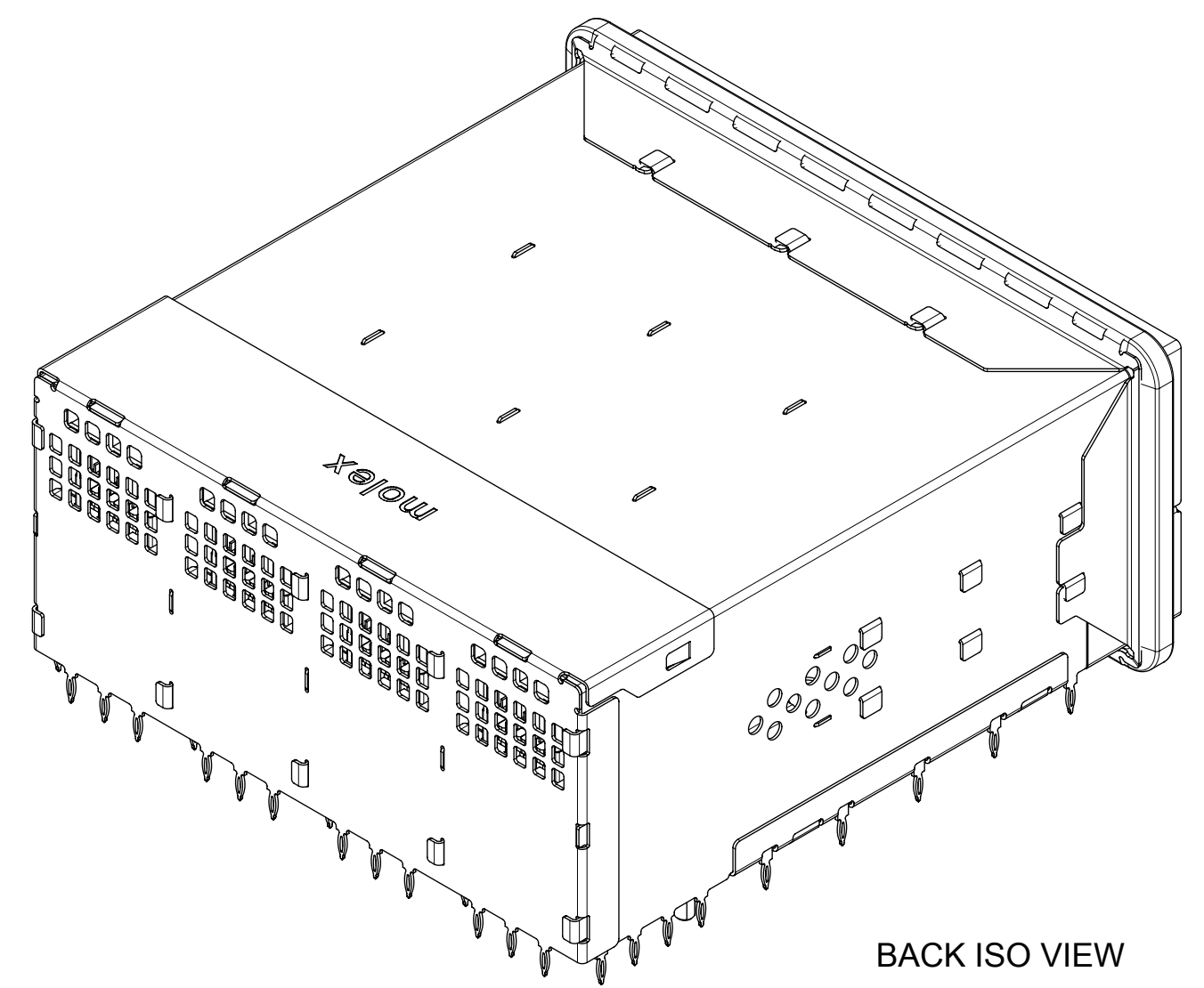
THIS DRAWING CONTAINS INFORMATION THAT IS PROPRIETARY TO MOLEX ELECTRONIC TECHNOLOGIES, LLC AND SHOULD NOT BE USED WITHOUT WRITTEN PERMISSION											
DIMENSION UNITS: mm		SCALE: 2:1		CURRENT REV DESC: SEE REVISION HISTORY							
GENERAL TOLERANCES (UNLESS SPECIFIED)		ANGULAR TOL ± 0.5°		4 PLACES ±		3 PLACES ±		2 PLACES ± 0.13			
0 PLACES ±		DRAFT WHERE APPLICABLE MUST REMAIN WITHIN DIMENSIONS		THIRD ANGLE PROJECTION		DRAWING: C-SIZE		SERIES: 170071		MATERIAL NUMBER: SEE CHART	
DOCUMENT NUMBER: SD-170071-0004		DOC TYPE: PSD		DOC PART: 001		REVISION: A		PRODUCT CUSTOMER DRAWING		SHEET NUMBER: 1 OF 5	



Partial 1  
VIEW D  
SCALE 5:1

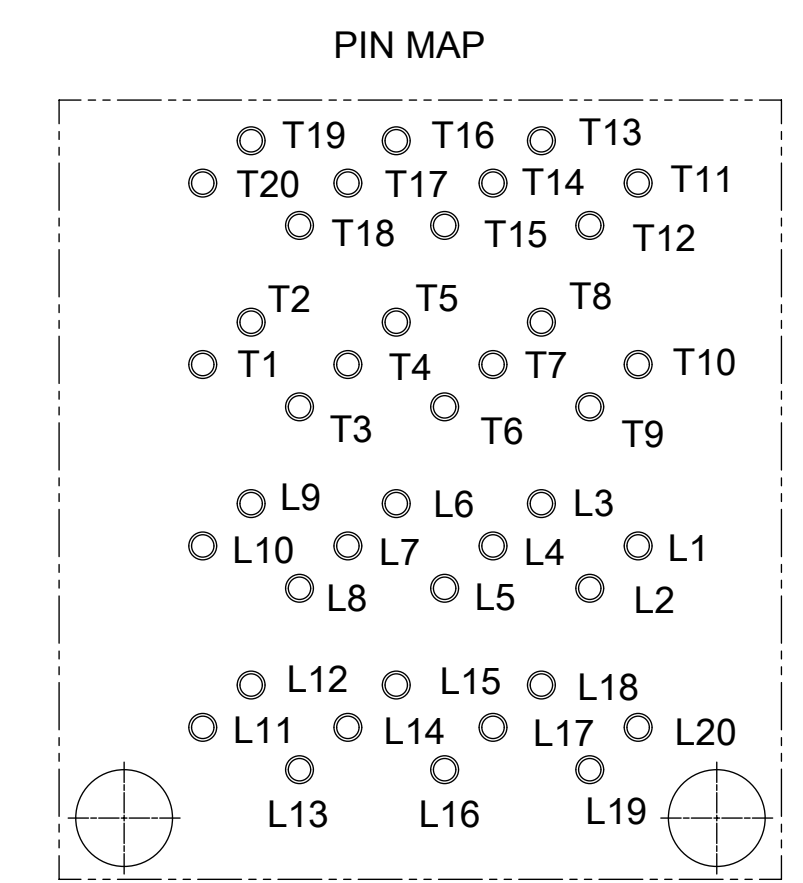
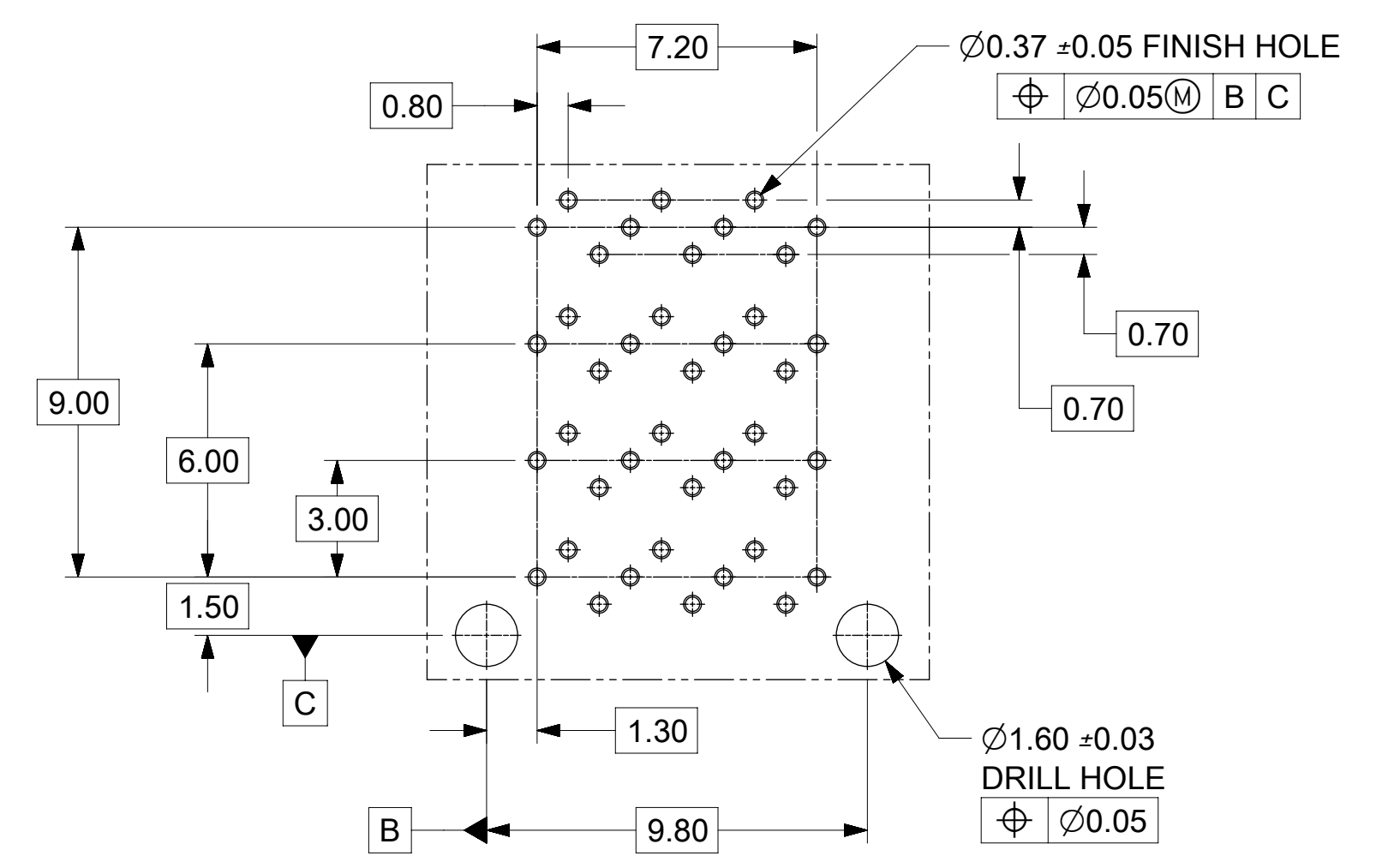
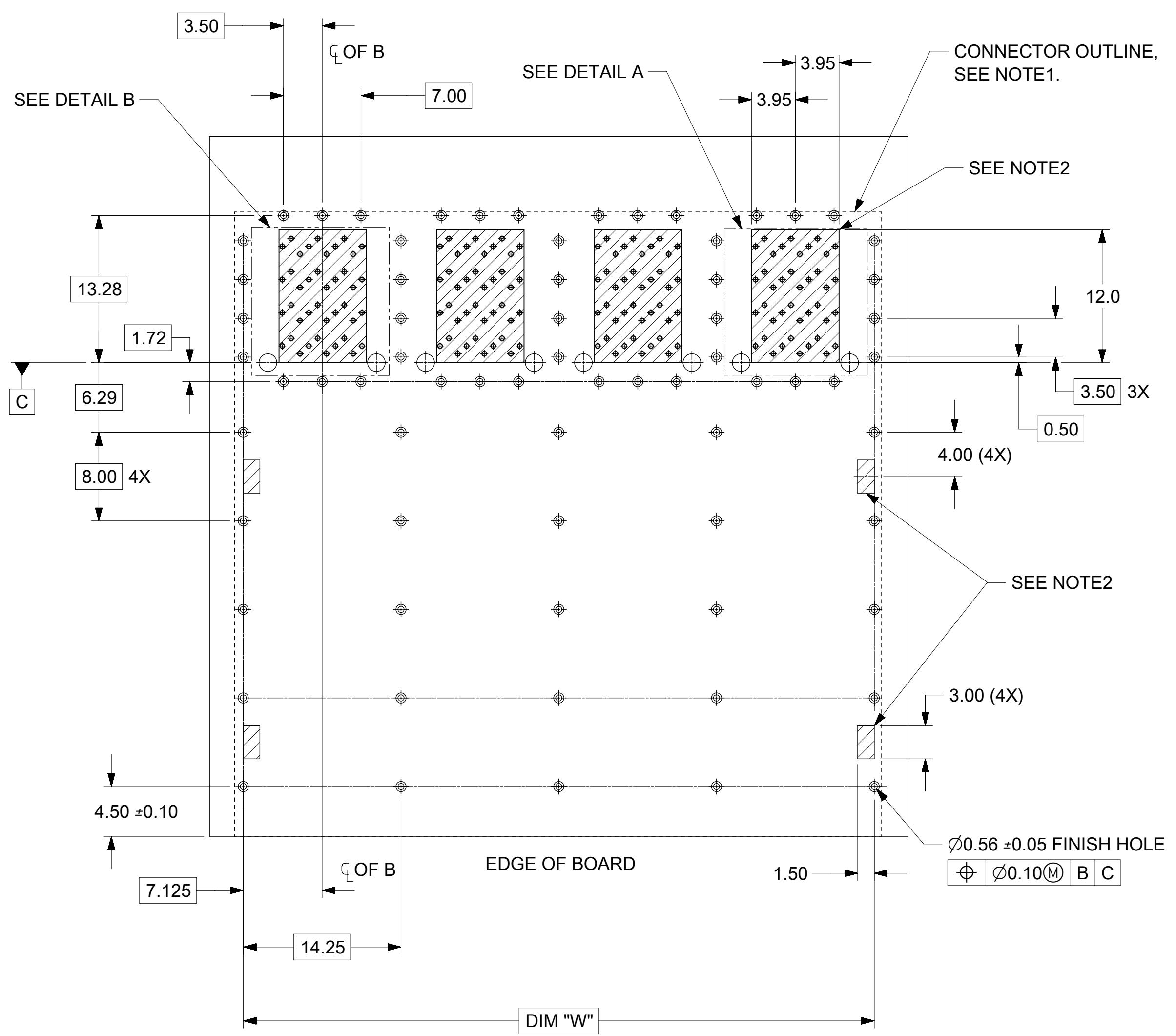


FRONT ISO VIEW



BACK ISO VIEW

THIS DRAWING CONTAINS INFORMATION THAT IS PROPRIETARY TO MOLEX ELECTRONIC TECHNOLOGIES, LLC AND SHOULD NOT BE USED WITHOUT WRITTEN PERMISSION									
DIMENSION UNITS		SCALE		CURRENT REV DESC: SEE REVISION HISTORY				<b>molex</b>	
mm		1:1		EC NO: 622761					
GENERAL TOLERANCES (UNLESS SPECIFIED)				DRWN: TMARRI 2019/07/24				ZSFP+ STACKED FLOW THRU WITH ELASTOMERIC GASKET	
ANGULAR TOL ± 0.5°				CHK'D: CWANG67 2019/08/22					
4 PLACES ±				APPR: RNELSON 2019/09/04				PRODUCT CUSTOMER DRAWING	
3 PLACES ±				INITIAL REVISION:					
2 PLACES ± 0.13				DRWN: JKACHLIC 2015/06/24				DOCUMENT NUMBER	
1 PLACE ± 0.25				APPR: MBANAKIS 2015/06/25				SD-170071-0004	
0 PLACES ±				THIRD ANGLE PROJECTION		DRAWING		DOC TYPE   DOC PART   REVISION	
DRAFT WHERE APPLICABLE MUST REMAIN WITHIN DIMENSIONS				C-SIZE		SERIES		MATERIAL NUMBER   CUSTOMER   SHEET NUMBER	
DOCUMENT STATUS P1				RELEASE DATE 2019/09/04 07:37:08		170071		SEE CHART   GENERAL MARKET   2 OF 5	

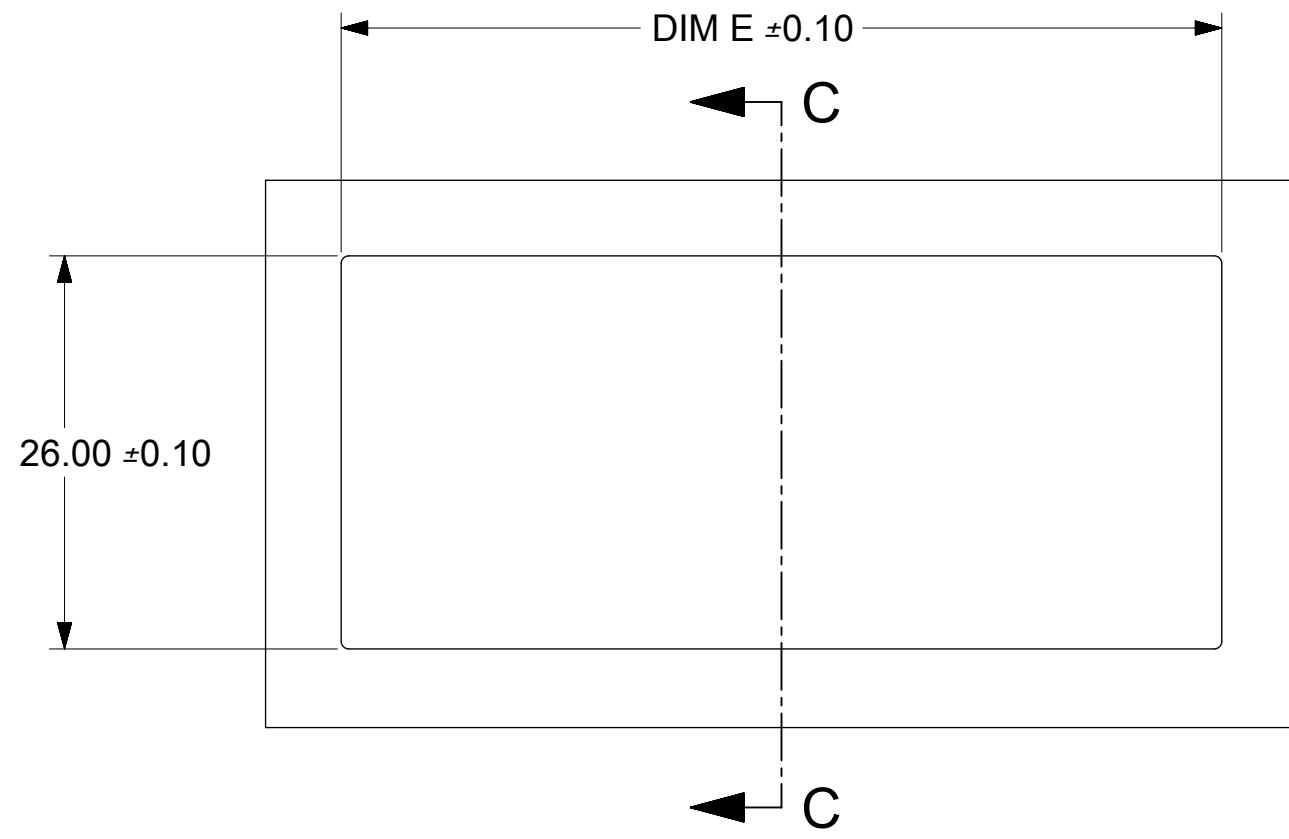


- NOTES:
1. THE ENTIRE AREA UNDER THE CONNECTOR IS A KEEP OUT ZONE FOR COMPONENTS AND TRACES, TOP LAYER ONLY, EXCEPT FOR CHASSIS GROUND.
  2. CROSS-HATCHED AREAS INDICATE PLACES WHERE THE PLASTIC HOUSING AND METAL CAGE MAY CONTACT PCB SURFACE. THESE AREAS ARE KEEP OUT ZONES. CROSS-HATCHED AREA UNDER THE CONNECTOR ARE TRACE AND VIA KEEP OUT AREAS FOR THE TOP LAYER.

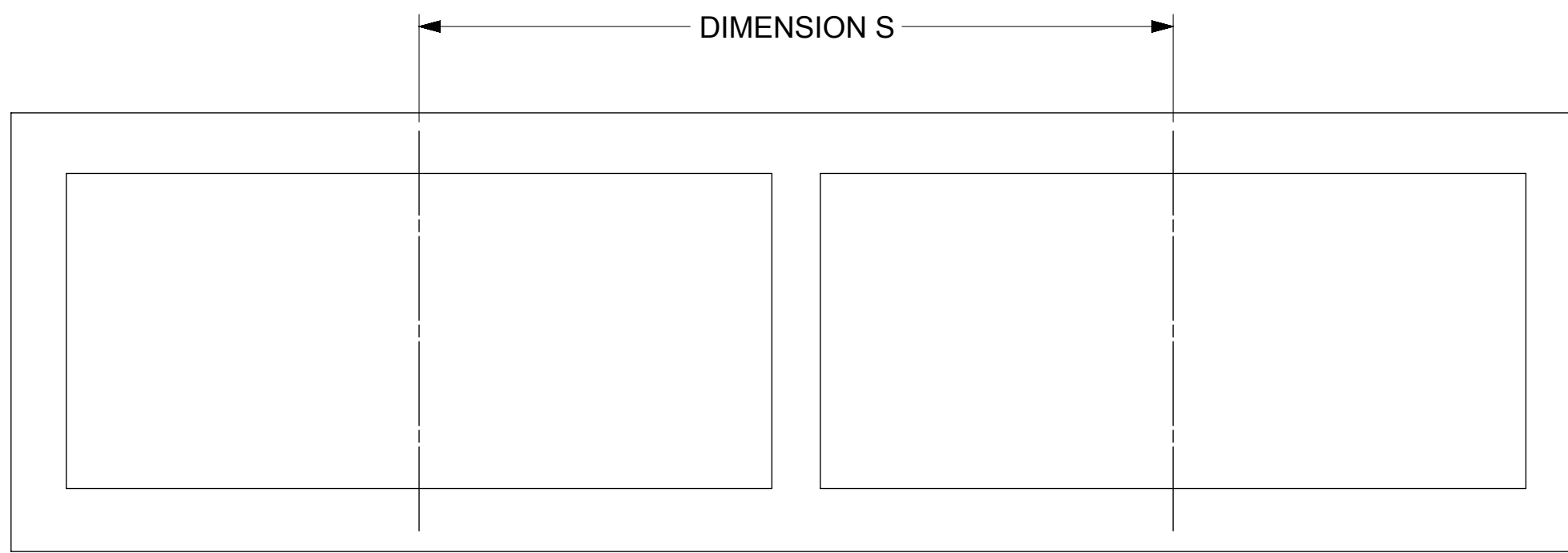
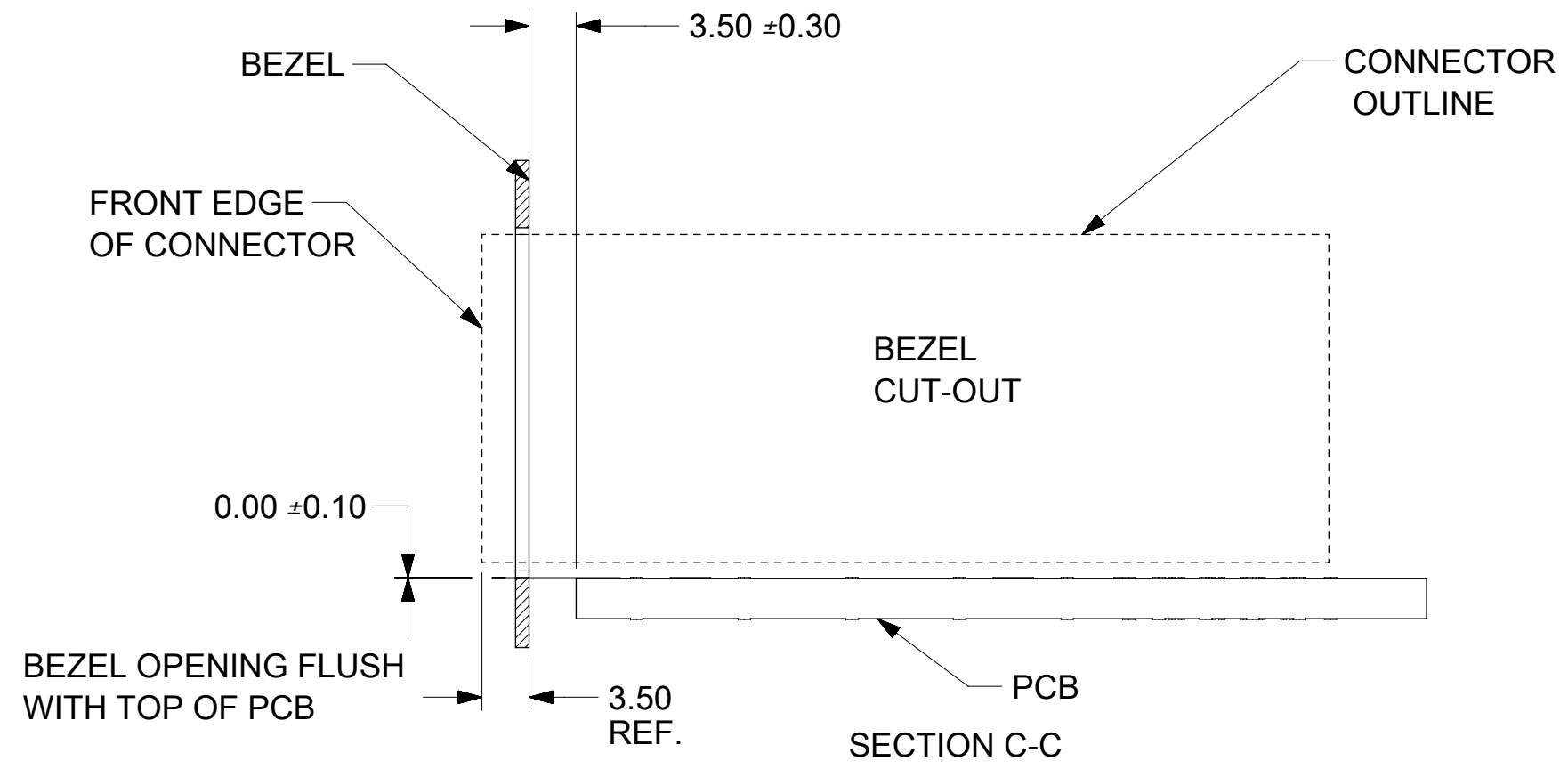
HOLE CHART				
PORT SIZE	DIM "W"	SIGNALS (Ø0.37)	SHIELD GROUND (Ø0.56)	CONNECTOR LOCATION (Ø1.60)
2X1	14.25	40	24	2
2X2	28.50	80	39	4
2X4	57.00	160	69	8
2X6	85.50	240	99	12
2X8	114.00	320	129	16
2X12	171.00	480	189	24

THIS DRAWING CONTAINS INFORMATION THAT IS PROPRIETARY TO MOLEX ELECTRONIC TECHNOLOGIES, LLC AND SHOULD NOT BE USED WITHOUT WRITTEN PERMISSION

DIMENSION UNITS <b>mm</b>	SCALE <b>3:1</b>	CURRENT REV DESC: SEE REVISION HISTORY		<b>molex</b>
GENERAL TOLERANCES (UNLESS SPECIFIED)		EC NO: 622761		
ANGULAR TOL ± 0.5°	4 PLACES ±	DRWN: TMARRI	2019/07/24	ZSFP+ STACKED FLOW THRU WITH ELASTOMERIC GASKET
3 PLACES ±	2 PLACES ± 0.13	CHK'D: CWANG67	2019/08/22	
1 PLACE ± 0.25	0 PLACES ±	APPR: RNELSON	2019/09/04	PRODUCT CUSTOMER DRAWING
DRAFT WHERE APPLICABLE MUST REMAIN WITHIN DIMENSIONS		INITIAL REVISION: DRWN: JKACHLIC 2015/06/24 APPR: MBANAKIS 2015/06/25		DOCUMENT NUMBER <b>SD-170071-0004</b>
THIRD ANGLE PROJECTION	DRAWING <b>C-SIZE</b>	SERIES <b>170071</b>	MATERIAL NUMBER SEE CHART	DOC TYPE <b>PSD</b>
			CUSTOMER GENERAL MARKET	DOC PART <b>001</b>
				REVISION <b>A</b>
				SHEET NUMBER <b>3 OF 5</b>



BEZEL CUT-OUT DETAIL  
BEZEL THICKNESS 0.8-2.6



BEZEL CUT OUT FOR  
CONNECTOR STACKING

CONFIGURATION	DIM "E"	DIM "S"
2X1	15.50	20.40 MINIMUM
2X2	29.75	34.65 MINIMUM
2X4	58.25	63.15 MINIMUM
2X6	86.75	91.65 MINIMUM
2X8	115.25	120.15 MINIMUM
2X12	172.25	177.15 MINIMUM

THIS DRAWING CONTAINS INFORMATION THAT IS PROPRIETARY TO MOLEX ELECTRONIC TECHNOLOGIES, LLC AND SHOULD NOT BE USED WITHOUT WRITTEN PERMISSION

DIMENSION UNITS <b>mm</b>	SCALE <b>2:1</b>	CURRENT REV DESC: SEE REVISION HISTORY		<b>molex</b>		
GENERAL TOLERANCES (UNLESS SPECIFIED)		EC NO: 622761				
ANGULAR TOL ± 0.5°		DRWN: TMARRI	2019/07/24	PRODUCT CUSTOMER DRAWING		
4 PLACES ±		CHK'D: CWANG67	2019/08/22	DOCUMENT NUMBER		
3 PLACES ±		APPR: RNELSON	2019/09/04	SD-170071-0004		DOC TYPE
2 PLACES ± 0.13		INITIAL REVISION:		PSD	DOC PART	REVISION
1 PLACE ± 0.25		DRWN: JKACHLIC	2015/06/24	001	001	A
0 PLACES ±		APPR: MBANAKIS	2015/06/25	SHEET NUMBER		
DRAFT WHERE APPLICABLE MUST REMAIN WITHIN DIMENSIONS	THIRD ANGLE PROJECTION	DRAWING	SERIES	MATERIAL NUMBER	CUSTOMER	SHEET NUMBER
		C-SIZE	170071	SEE CHART	GENERAL MARKET	4 OF 5



H  
G  
F  
E  
D  
C  
B  
A

REVISION HISTORY		
DATE	REV.	DESCRIPTION
2019/07/26	A	1.REMASTER FROM MM INTO ECTR. 2.ADD 2X1 1700711004 INTO P/N CHART. 3.ADD NOTES IN SHEET3 FOR KEEP OUT ZONE AREA.

THIS DRAWING CONTAINS INFORMATION THAT IS PROPRIETARY TO MOLEX ELECTRONIC TECHNOLOGIES, LLC AND SHOULD NOT BE USED WITHOUT WRITTEN PERMISSION

DIMENSION UNITS <b>mm</b>	SCALE <b>1:1</b>	CURRENT REV DESC: SEE REVISION HISTORY	<b>molex</b>			
GENERAL TOLERANCES (UNLESS SPECIFIED)						
ANGULAR TOL ± 0.5°		EC NO: 622761	PRODUCT CUSTOMER DRAWING			
4 PLACES ±		DRWN: TMARRI 2019/07/24	DOCUMENT NUMBER	DOC TYPE	DOC PART	REVISION
3 PLACES ±		CHK'D: CWANG67 2019/08/22	<b>SD-170071-0004</b>	PSD	001	<b>A</b>
2 PLACES ± 0.13		APPR: RNELSON 2019/09/04				
1 PLACE ± 0.25		INITIAL REVISION:	MATERIAL NUMBER	CUSTOMER	SHEET NUMBER	
0 PLACES ±		DRWN: JKACHLIC 2015/06/24		GENERAL MARKET	5 OF 5	
		APPR: MBANAKIS 2015/06/25				
DRAFT WHERE APPLICABLE MUST REMAIN WITHIN DIMENSIONS	THIRD ANGLE PROJECTION	DRAWING	SERIES			
		<b>C-SIZE</b>	<b>170071</b>			

DOCUMENT STATUS	P1	RELEASE DATE	2019/09/04 07:37:08
-----------------	----	--------------	---------------------