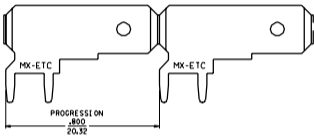
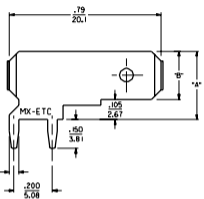
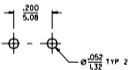


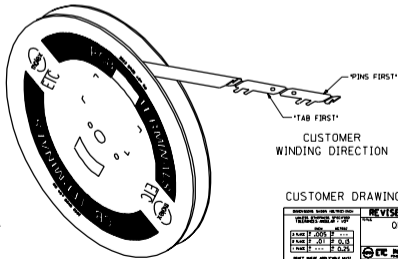
PIN ORIENTATION	MATERIAL NUMBER	ENGINEERING NUMBER	CUSTOMER NUMBER	CARRIER	PLATING SEE NOTE 6 & 7.	DIMENSION "A"	DIMENSION "B"
TAB FIRST	197134001	19713-4001	4000	LOOSE	TIN/LEAD	.356	.250
TAB FIRST	197134003	19713-4003	-	STRIP	TIN/LEAD	.356	.250
PINS FIRST	197134004	19713-4004	-	STRIP	TIN/LEAD	.356	.250



ISOMETRIC VIEW



RECOMMENDED P.W.B. HOLE LAYOUT



CUSTOMER WINDING DIRECTION

CUSTOMER DRAWING

- NOTES:
1. BARE EDGES PERMISSIBLE AT CARRIER CUT OFF.
 2. MATERIAL: BRASS.
 3. MATERIAL THICKNESS: .032 \pm .001 \pm 10.813 \pm 0.031
 4. TAB CONFORMS TO NEMA SPECIFICATIONS.
 5. ALL DIMENSIONS AND NOTES ARE REFERENCE ONLY UNLESS NOTED.
 6. PLATING: 90/10 TIN LEAD 150M 1inX3.8M m/ MIN THICKNESS.
 7. FINISH: MATTE

REV	REVISION
F	CHANGED FINISH ETC00010121 BPE 09/21/2000
E	FINISH CHANGE ETC00010117 2000/08/29 MEB
D	ADDED ORIENTATION ETC00010110 08/16/2000 BPE
C	ADD PART NO. 08-206-01 ET1999-0262
B	REMOVE NON-PLATED PARTS FROM CARRIER ETC00353 ET/0-0 J4
A	RELEASE TO CUSTOMER ETB0108 09/05/91

REVISIONS

REVISE ONLY ON CAD SYSTEM

QUICK DISCONNECT
PCB MOUNTABLE
.250 X .032 TAB

ETC INC. PART NO. 1 OF 1 98/04/28

SEE CHART SD-19713-400

DATE: JH BY: RWJ
DATE: 01/02/00 BY: SC