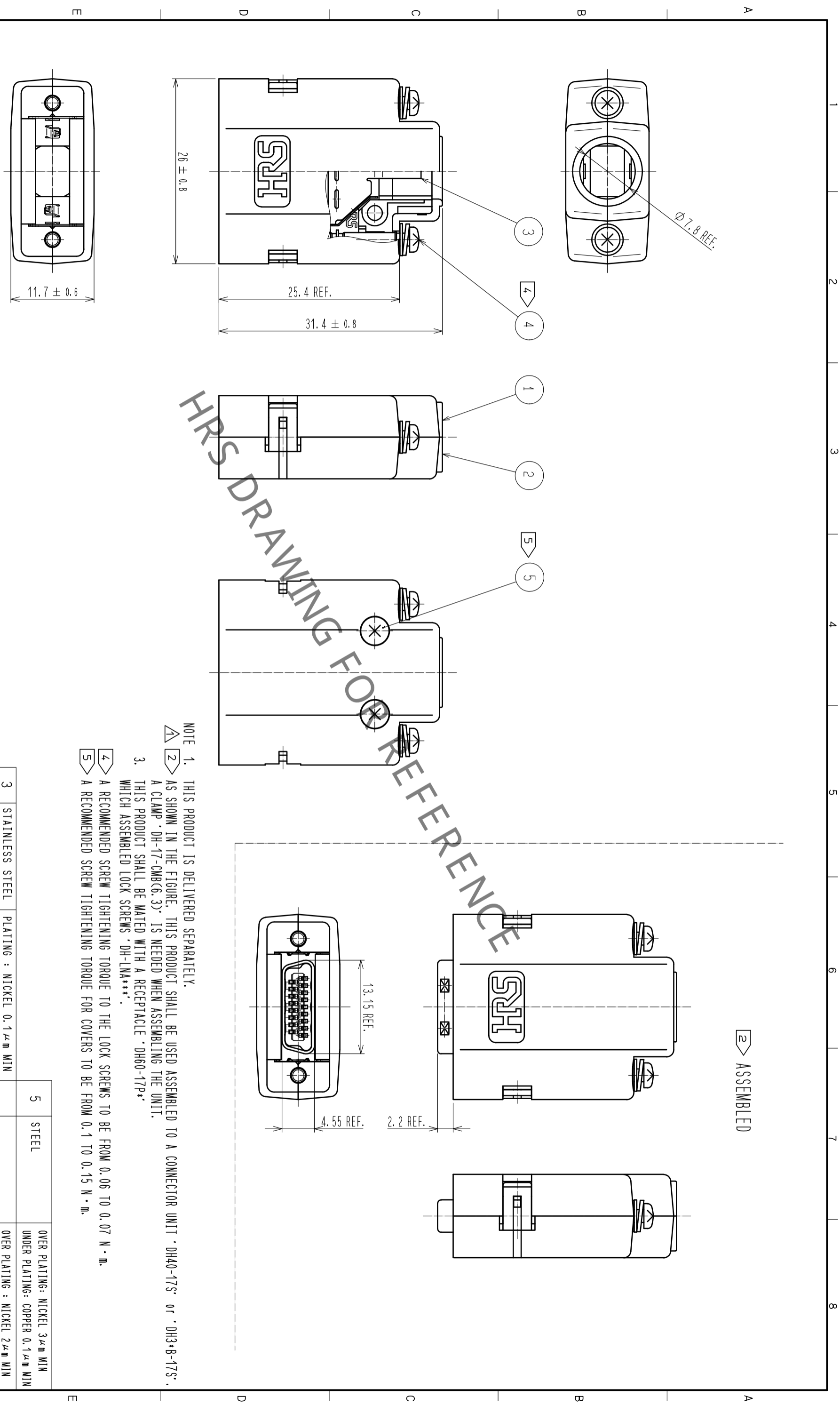


In case of consideration for using Automotive equipment / device which demand high reliability, kindly contact our sales window correspondents.



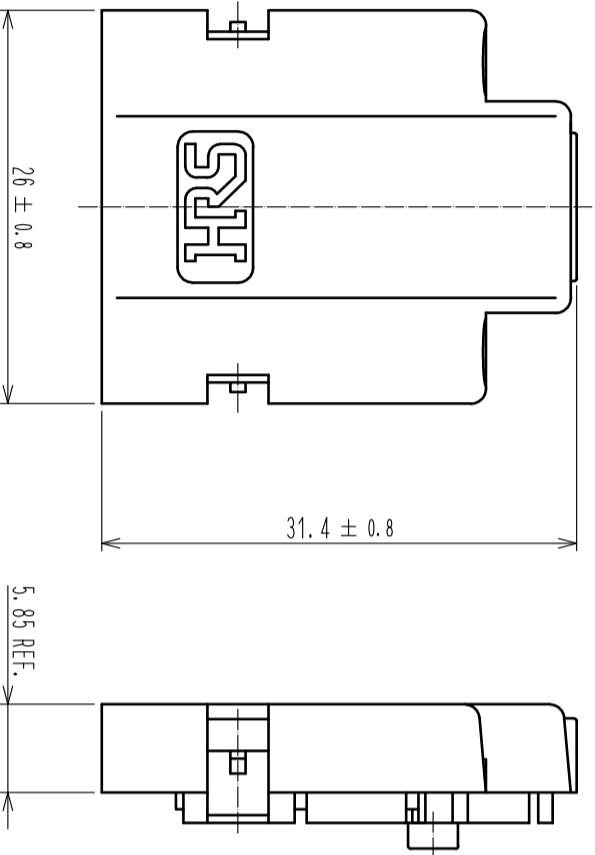
HRS DRAWING FOR REFERENCE

- NOTE 1. THIS PRODUCT IS DELIVERED SEPARATELY.
 2 AS SHOWN IN THE FIGURE, THIS PRODUCT SHALL BE USED ASSEMBLED TO A CONNECTOR UNIT 'DH40-17S' or 'DH3+B-17S'. A CLAMP 'DH-17-CMB(6.3)' IS NEEDED WHEN ASSEMBLING THE UNIT.
 3. THIS PRODUCT SHALL BE MATED WITH A RECEPTACLE 'DH60-17P*' WHICH ASSEMBLED LOCK SCREWS 'DH-LMA***'.
 4 A RECOMMENDED SCREW TIGHTENING TORQUE TO THE LOCK SCREWS TO BE FROM 0.06 TO 0.07 N · m.
 5 A RECOMMENDED SCREW TIGHTENING TORQUE FOR COVERS TO BE FROM 0.1 TO 0.15 N · m.

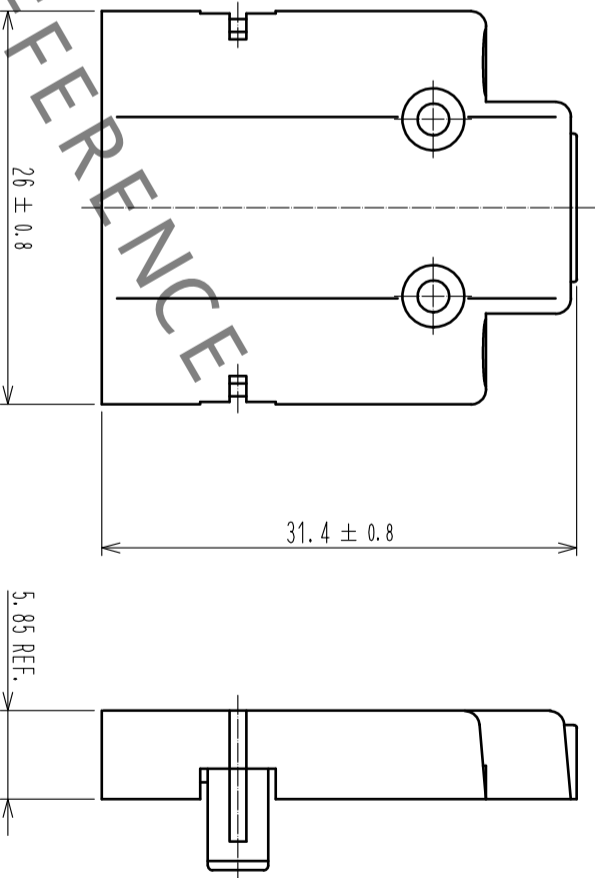
ASSEMBLED

NO.	3	STAINLESS STEEL	PLATING : NICKEL 0.1 μm MIN	NO.	5	STEEL	OVER PLATING: NICKEL 3 μm MIN UNDER PLATING: COPPER 0.1 μm MIN
UNITS	mm	PC	UL94V-0 (SAND BEIGE)	NO.	4	STEEL	OVER PLATING : NICKEL 2 μm MIN UNDER PLATING : COPPER 1 μm MIN M2X0.4
MATERIAL		FINISH . REMARKS		NO.		MATERIAL	
SCALE		COUNT		DESCRIPTION OF REVISIONS		DESIGNED	
2 : 1		1		DIS-E-00002570		TS: ITO	
APPROVED : KN. ICHIKAWA		20100405		DRAWING		EDC-126586-13-13	
CHECKED : KN. ICHIKAWA		20100405		PART NO.		DH-17-CV1B(13)	
DESIGNED : MO. SHIMOYAMA		20100405		CODE		CL244-0009-6-13	
DRAWN : TM. ONO		20100405		NO.		1	
						2	

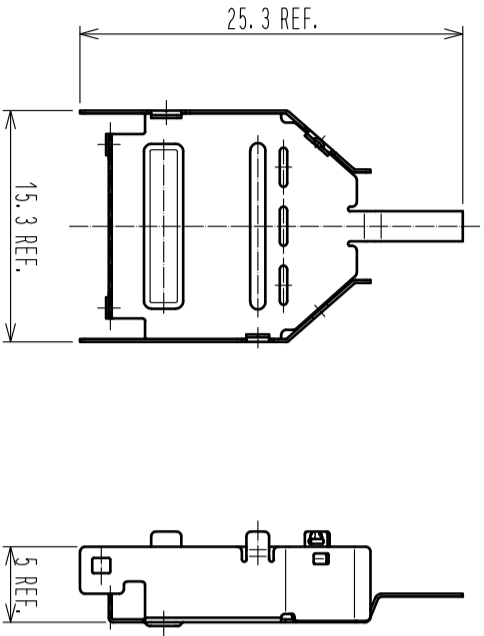
REF NO. ①



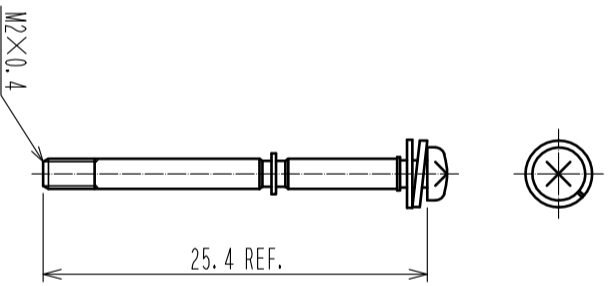
REF NO. ②



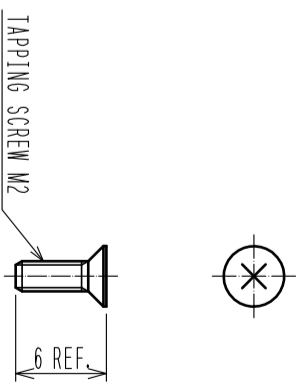
REF NO. ③



REF NO. ④



REF NO. ⑤



HRS DRAWING FOR REFERENCE

FORM HC0011-5-8

1

2

3

4

5

6

7

8

HRS	DRAWING NO.	EDC-126586-13-13
	PART NO.	DH-17-CV1B(13)
	CODE NO.	CL244-0009-6-13

