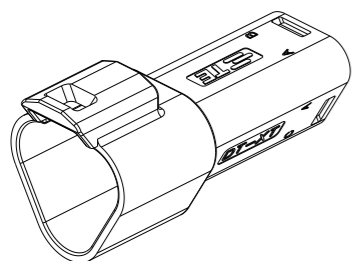
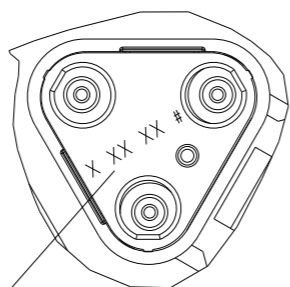


REVISIONS

P	LTR	DESCRIPTION	DATE	DWN	APVD
	A	INITIAL RELEASE	17JUN2020	J.G	I.Y
	A1	ECR-20-010349	26JUL2020	J.G	I.Y
	A2	ECN-21-113425	17AUG2021	J.G	Z.Z

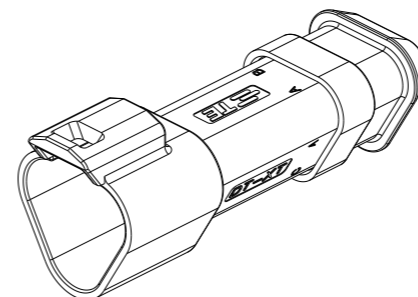


3CCT RECEPTACLE CONNECTOR WITHOUT HEATSHRINK HOUSING

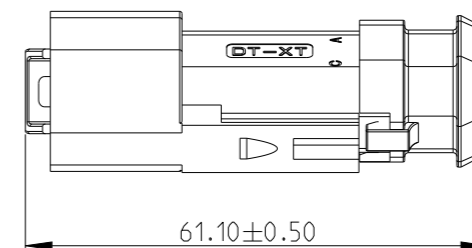
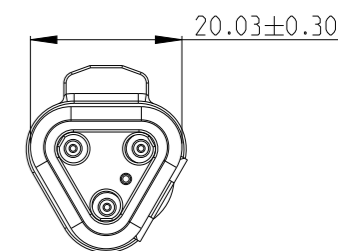
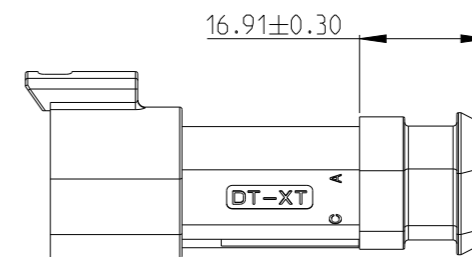
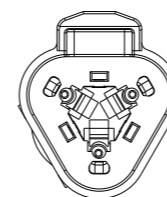
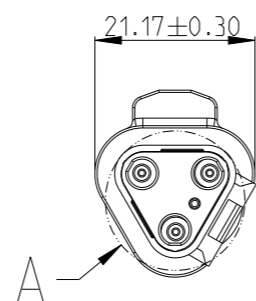
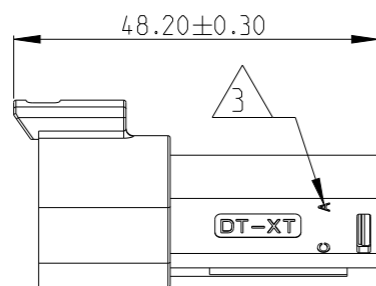
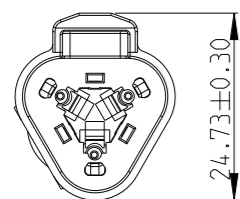


DETAIL A SCALE 2:1

4 DATE CODE: X XX XX
 X- DAY: 1- 7
 XX- WEEK: 01 - 52
 XX- YEAR: 00 - 99
 #- MACHINE NO. 1
 EXAMPLE: 11315 = DAY 1, WEEK 13, YEAR 15 i.e. 23rd OF MARCH 2015



3CCT RECEPTACLE CONNECTOR WITH HEATSHRINK HOUSING ULTRASONICALLY WELDED IN PLACE



1. THIS RECEP MATES WITH PLUG ASSEMBLY PN X-2600027-X, WEDGE LOCK PN W3PX.

2. MATERIALS
 RECEPTACLE HOUSING: NYLON GF30, SEE PN TABLE FOR COLOUR
 BACK SEAL: SILICONE RUBBER
 BACK COVER: NYLON GF30, BLACK
 HEATSHRINK HOUSING: NYLON GF30, BLACK

3 CIRCUIT IDENTIFICATION

4 DATE CODE DESCRIPTION

5. JACKET RANGE LARGE = Ø2.23MM TO 3.68MM (SEAL COLOUR: LIGHT BLUE)
 JACKET RANGE SMALL = Ø1.20MM TO 3.05MM (SEAL COLOUR: BURNT ORANGE)

6. SEE SHEET 2 FOR FINAL PART NUMBER

THIS DRAWING IS A CONTROLLED DOCUMENT.

DIMENSIONS:	TOLERANCES UNLESS OTHERWISE SPECIFIED:
mm	
	0 PLC ±
	1 PLC ±
	2 PLC ±
	3 PLC ±
	4 PLC ±
	ANGLES ±
MATERIAL -	FINISH -

DWN	J.GU	17 JUN 2020
CHK	E. JIANG	17 JUN 2020
APVD	I.YIN	17 JUN 2020
PRODUCT SPEC	108-160026	
APPLICATION SPEC	114-160017	
WEIGHT	-	

TE Connectivity		NAME	
		3CCT DT-XT CONNECTOR RECEPTACLE ASSEMBLY	
SIZE	CAGE CODE	DRAWING NO	RESTRICTED TO
A3	00779	C=2600026	-
CUSTOMER DRAWING; RESTRICTED CUSTOMER		SCALE 1:1	SHEET 1 OF 2 REV A2

THIS DRAWING IS UNPUBLISHED.

RELEASED FOR PUBLICATION

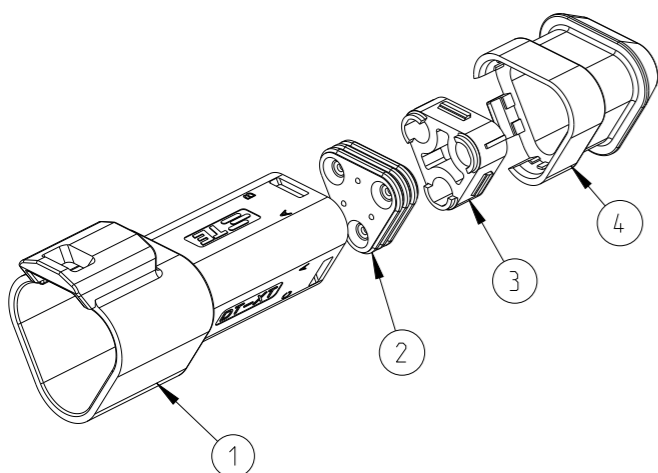
20

REVISIONS

© COPYRIGHT 2020 TE Connectivity. All Rights Reserved.

ALL RIGHTS RESERVED.

P	LTR	DESCRIPTION	DATE	DWN	APVD
		SEE SHEET 1			



TE PN	ALIAS PN	REVISION OF EACH ASSY NO.	WEIGHT OF EACH ASSY(g)	COLOR	BLACK	GERY	GREEN	BLUE	YELLOW	WHITE	BROWN	ORANGE	RED	BURNT ORANGE	LIGHT BLUE	BLACK	BLACK	
2--0	934442609	-	8.923		-	-	-	-	-	-	-	-	1	-	1	1	1	
1--9	934442608	-	8.923		-	-	-	-	-	-	-	1	-	-	1	1	1	
1--8	934442607	-	8.923		-	-	-	-	-	1	-	-	-	-	1	1	1	
1--7	934442606	-	8.923		-	-	-	-	-	1	-	-	-	-	1	1	1	
1--6	934442605	-	8.923		-	-	-	1	-	-	-	-	-	-	1	1	1	
1--5	934442604	-	8.923		-	-	-	1	-	-	-	-	-	-	1	1	1	
1--4	934442603	-	8.923		-	-	1	-	-	-	-	-	-	-	1	1	1	
1--3	934442602	-	8.923		-	-	-	-	-	-	-	-	-	-	1	1	1	
1--2	934442601	-	8.923		-	-	-	-	-	-	-	-	-	-	1	1	1	
1--1	934442509	-	8.923		1	-	-	-	-	-	-	-	-	-	1	1	1	
1--0	934442508	-	8.923		-	-	-	-	-	-	-	1	1	-	1	1	1	
-9	934442507	-	8.923		-	-	-	-	-	-	1	-	-	1	-	1	1	
-8	934442506	-	8.923		-	-	-	-	-	1	-	-	-	1	-	1	1	
-7	934442505	-	8.923		-	-	-	1	-	-	-	-	-	1	-	1	1	
-6	934442504	-	8.923		-	-	1	-	-	-	-	-	-	1	-	1	1	
-5	934442503	-	8.923		-	-	1	-	-	-	-	-	-	1	-	1	1	
-4	934442502	-	8.923		-	-	1	-	-	-	-	-	-	1	-	1	1	
-3	934442501	-	8.923		1	-	-	-	-	-	-	-	-	1	-	1	1	
-2	934442209	-	6.88		-	-	-	-	-	-	-	1	-	1	1	1	-	
-1	934442208	-	6.88		-	-	-	-	-	-	1	-	-	1	1	1	-	
3--6	934442207	-	6.88		-	-	-	-	-	1	-	-	-	1	1	1	-	
3--5	934442206	-	6.88		-	-	-	-	1	-	-	-	-	1	1	1	-	
3--4	934442205	-	6.88		-	-	-	1	-	-	-	-	-	1	1	1	-	
3--3	934442204	-	6.88		-	-	1	-	-	-	-	-	-	1	1	1	-	
3--2	934442203	-	6.88		-	-	1	-	-	-	-	-	-	1	1	1	-	
3--1	934442202	-	6.88		-	1	-	-	-	-	-	-	-	1	1	1	-	
3--0	934442201	-	6.88		1	-	-	-	-	-	-	-	-	1	1	1	-	
2--9	934442109	-	6.88		-	-	-	-	-	-	-	1	1	-	1	1	-	
2--8	934442108	-	6.88		-	-	-	-	-	-	1	-	1	-	1	1	-	
2--7	934442107	-	6.88		-	-	-	-	-	1	-	-	1	-	1	1	-	
2--6	934442106	-	6.88		-	-	-	-	1	-	-	-	1	-	1	1	-	
2--5	934442105	-	6.88		-	-	-	1	-	-	-	-	1	-	1	1	-	
2--4	934442104	-	6.88		-	-	1	-	-	-	-	-	1	-	1	1	-	
2--3	934442103	-	6.88		-	-	1	-	-	-	-	-	1	-	1	1	-	
2--2	934442102	-	6.88		-	1	-	-	-	-	-	-	1	-	1	1	-	
2--1	934442101	-	6.88		1	-	-	-	-	-	-	-	1	-	1	1	-	
TE PN	ALIAS PN	REVISION OF EACH ASSY NO.	WEIGHT OF EACH ASSY(g)	COLOR	BLACK	GERY	GREEN	BLUE	YELLOW	WHITE	BROWN	ORANGE	RED	BURNT ORANGE	LIGHT BLUE	BLACK	BLACK	
				MATERIAL	NYLON GF30	NYLON GF30	NYLON GF30	NYLON GF30	NYLON GF30	NYLON GF30	NYLON GF30	NYLON GF30	NYLON GF30	SILICONE RUBBER	SILICONE RUBBER	NYLON GF30	NYLON GF30	
				DESCRIPTION	RECEPTACLE HOUSING										BACK SEAL SMALL	BACK SEAL LARGE	BACK COVER	HEATSHRINK HOUSING
				ITEM NO	1										2		3	4

THIS DRAWING IS A CONTROLLED DOCUMENT.

DWN J.GU 17JUN2020
 CHK E. JIANG 17JUN2020
 APVD L.YIN 17JUN2020

PRODUCT SPEC 108-160026
 APPLICATION SPEC 114-160017
 WEIGHT -

STE TE Connectivity

NAME 3CCT DT-XT CONNECTOR RECEPTACLE ASSEMBLY

SIZE A3 CAGE CODE 00779 DRAWING NO C-2600026 RESTRICTED TO -

CUSTOMER DRAWING;RESTRICTED CUSTOMER SCALE 1:1 SHEET 2 OF 2 REV A2

