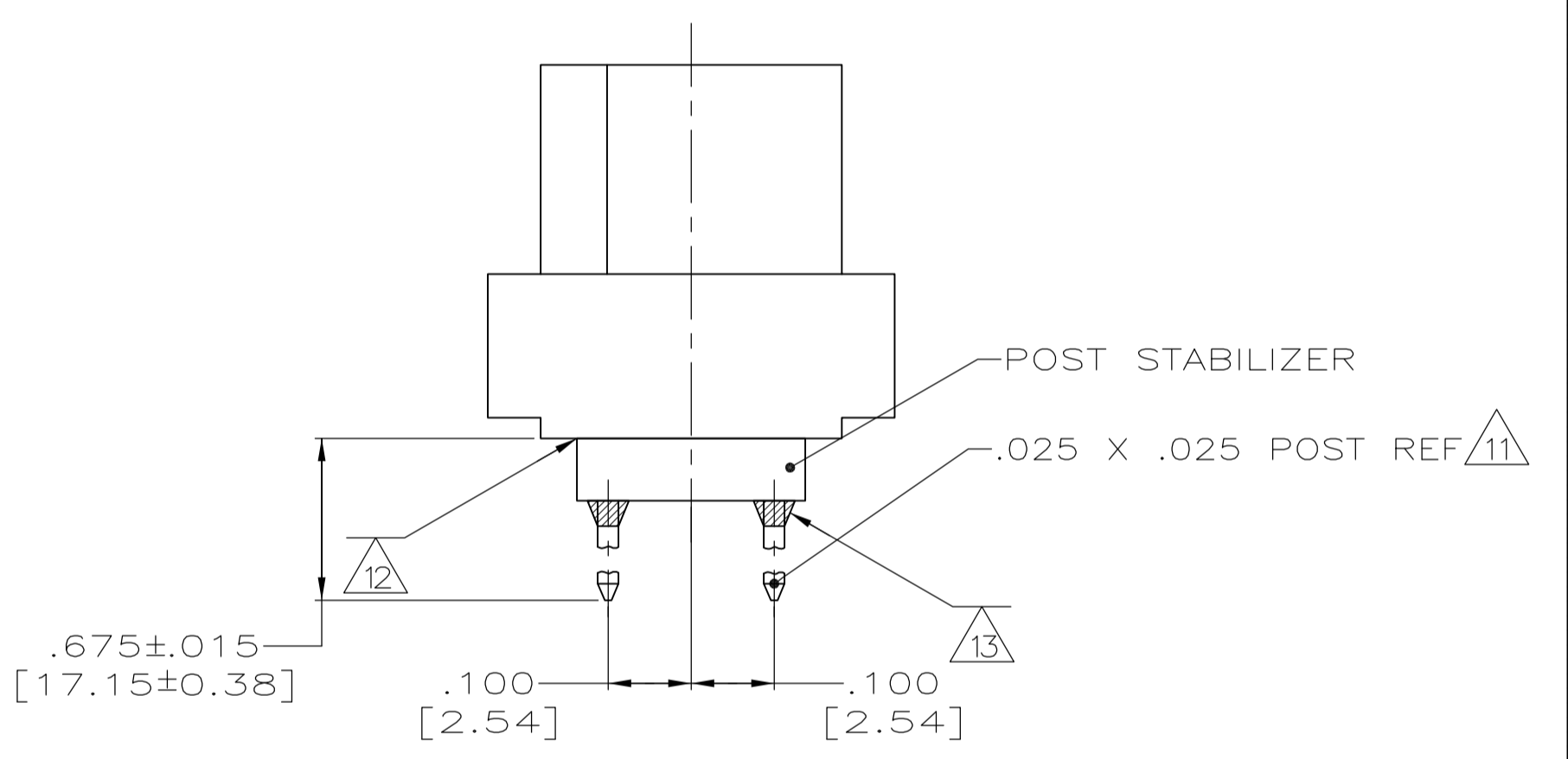
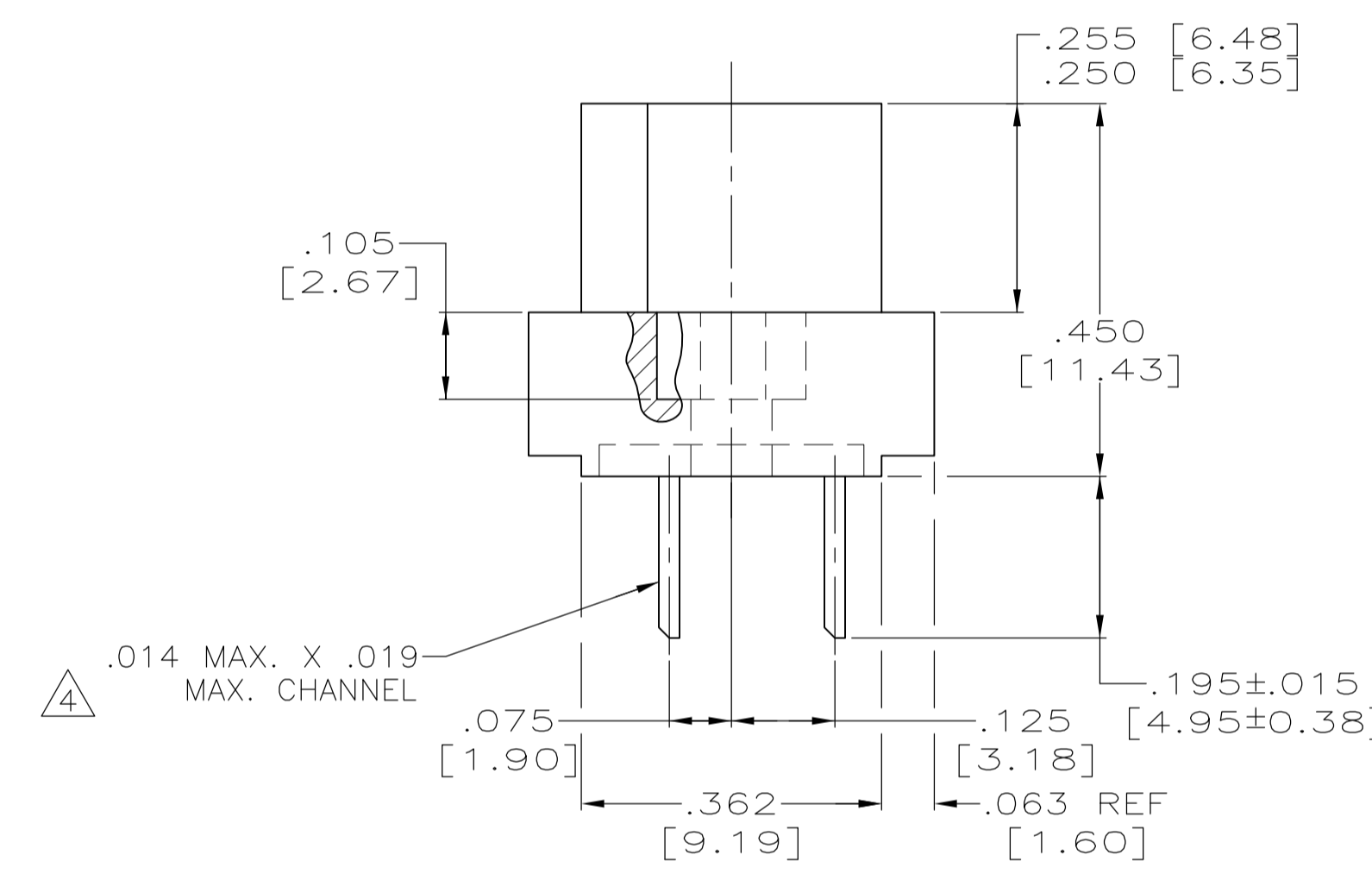
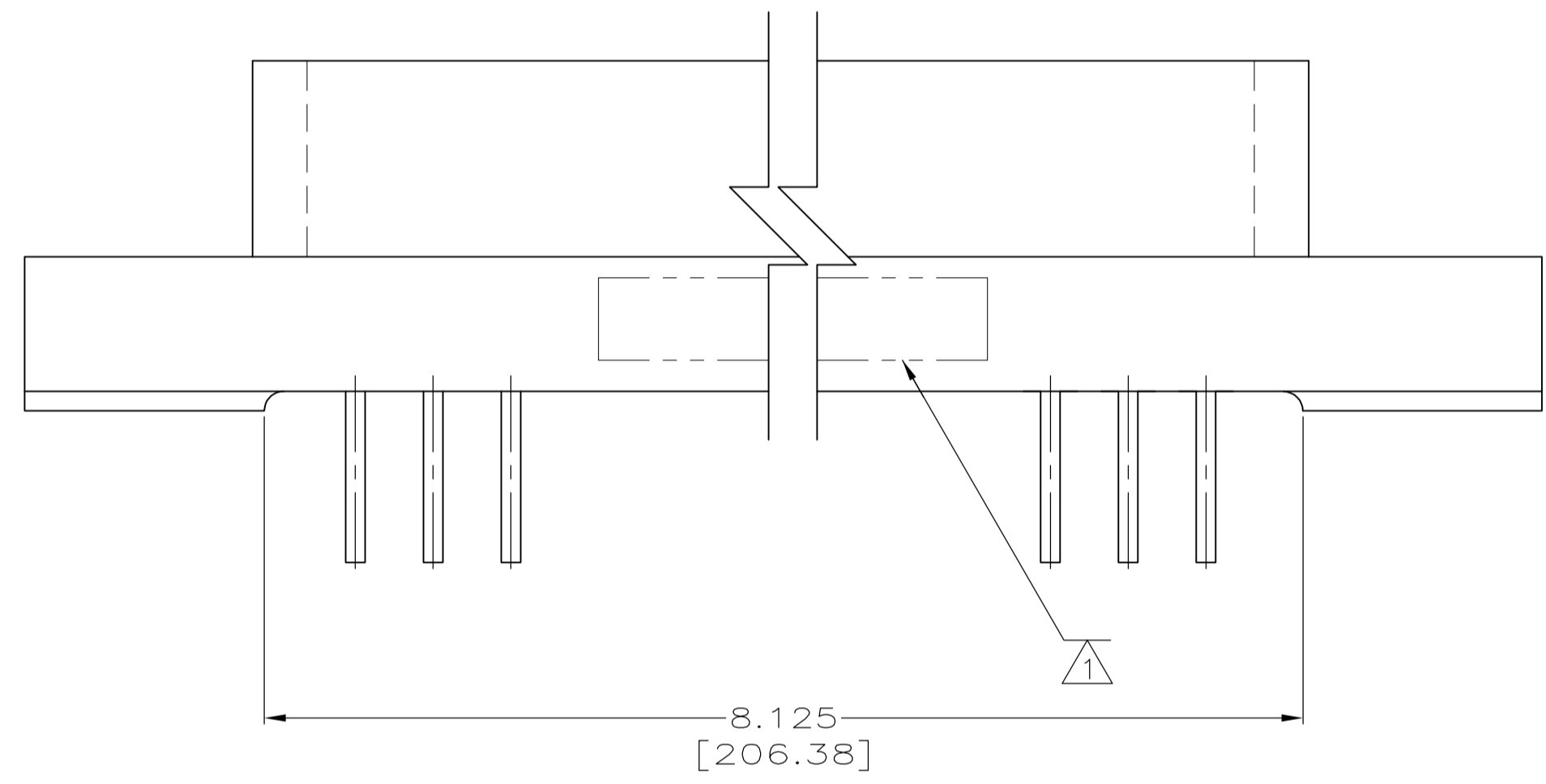
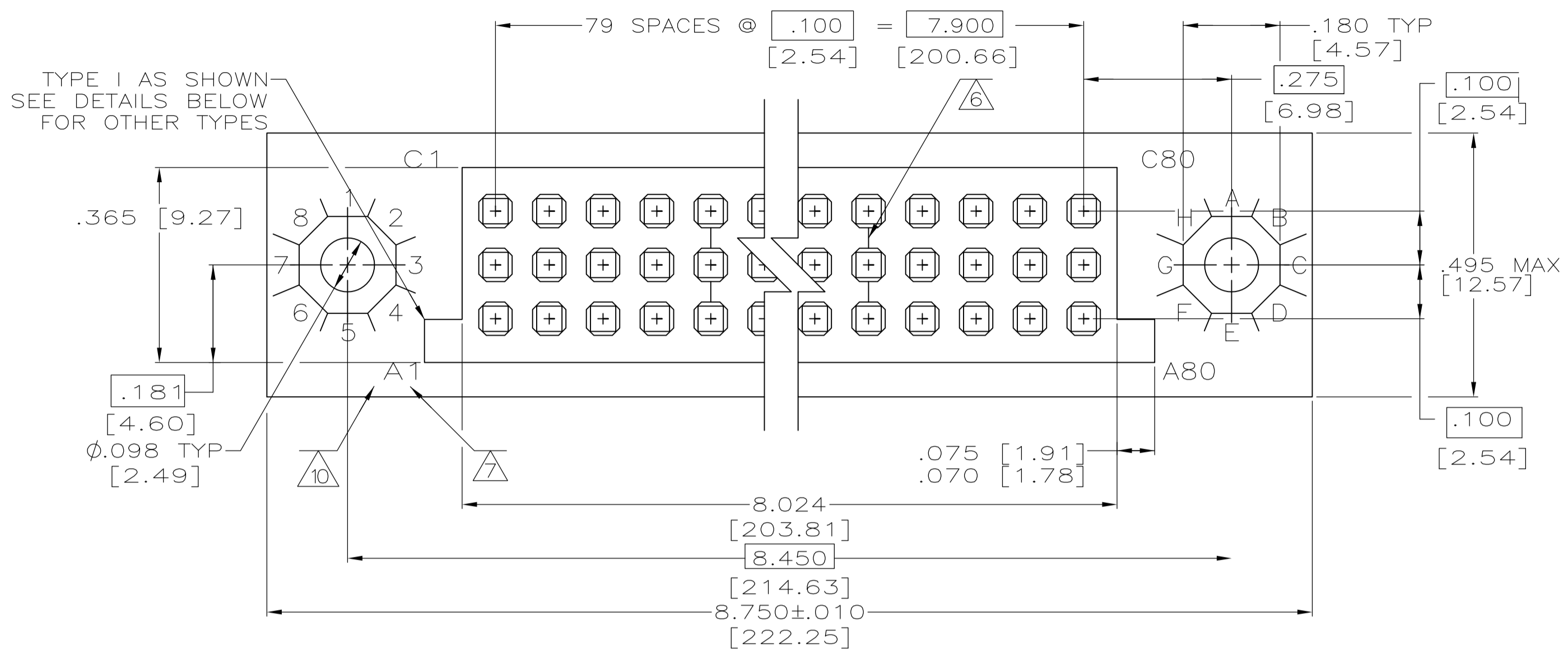
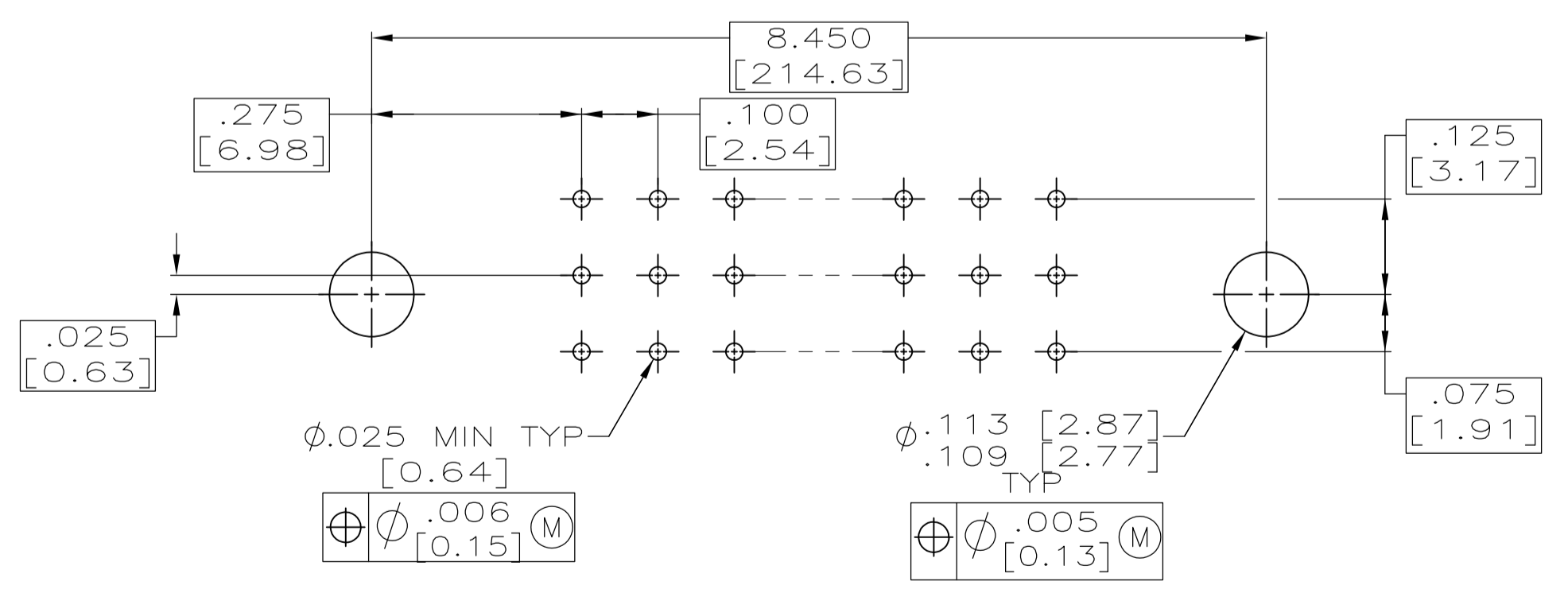


REVISONS		DATE	DMN	APVD
LOC	DIST	DESCRIPTION		
G	REV PER ECO	13-016373	12-6-13	CT DM

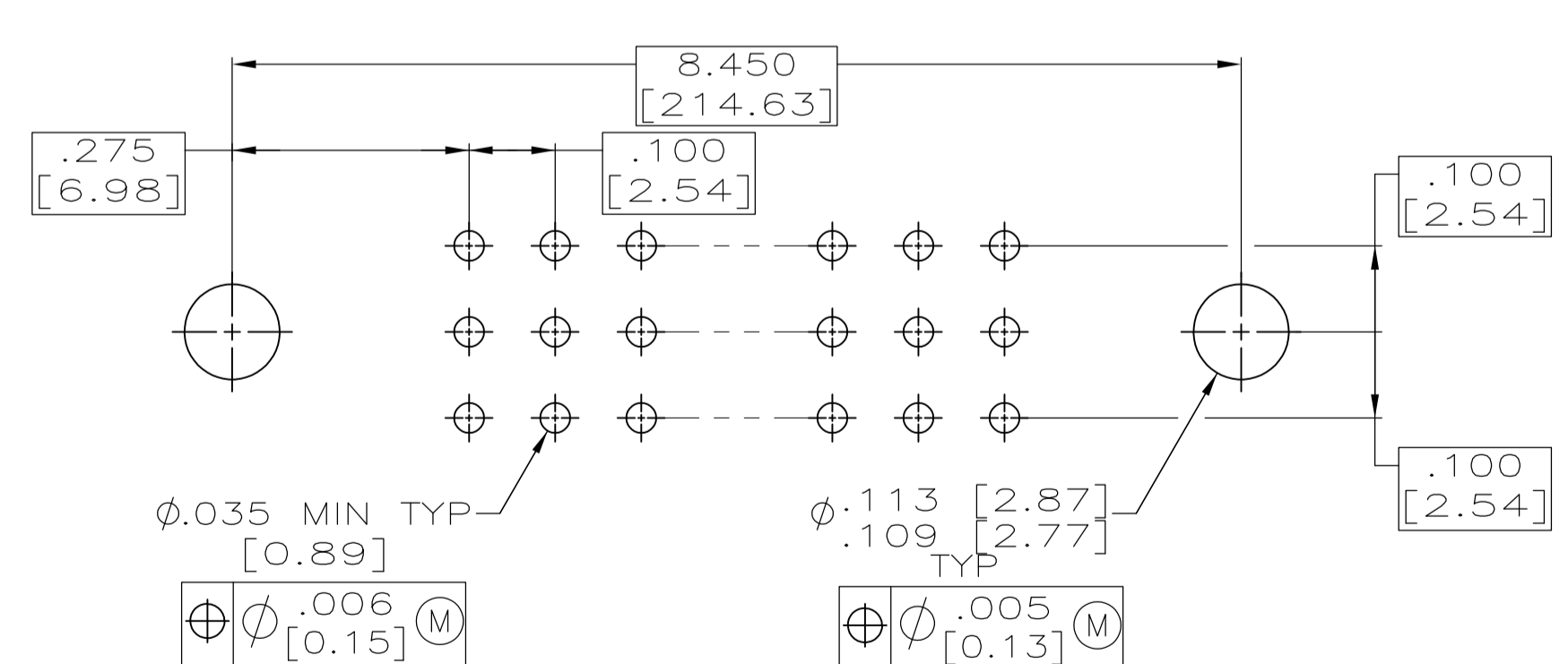


FLOW SOLDER POST CONTACTS
 (-1, -3, -5, -7, OUTSIDE ROWS ONLY, AS SHOWN)
 (-9, 1- -1, 1- -3, 1- -5, WITH ALL 3 ROWS FULLY LOADED)

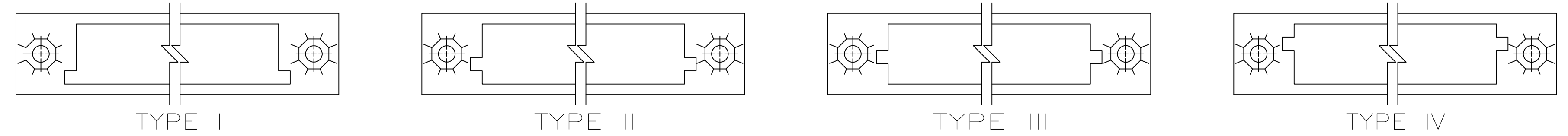
WRAP TYPE POST 3-HIGH CONTACT
 (-2, -4, -6, -8, OUTSIDE ROWS ONLY)
 (1- -0, 1- -2, 1- -4, 1- -6, WITH ALL 3 ROWS FULLY LOADED)



RECOMMENDED P. C. BOARD LAYOUT
 FLOW SOLDER TYPE



RECOMMENDED P. C. BOARD LAYOUT
 WIRE WRAP TYPE



- 1 MILITARY PART NUMBER, 00779, DATE CODE, PART NUMBER & AMP MARKED ON OPPOSITE SIDE.
- 2 HOUSING MATERIAL: POLYPHENYLENE SULFIDE.
- 3 CONTACT MATERIAL: BERYLLIUM COPPER (BeCu) OR COPPER-NICKEL-SILICON (CuNiSi).
- 4 CONTACT FINISH: .000050 GOLD IN CONTACT AREA, .000100 TIN-LEAD ON SOLDER TAILS, OVER .000030 NICKEL ENTIRE CONTACT.
- 5 P. C. BOARD MOUNTED CONNECTORS DO NOT REQUIRE STABILIZERS.
- 6 LINES INDICATING EVERY FIVE CAVITIES ON THIS SURFACE EXCEPT END CAVITIES, STARTING FROM POSITION 1.
- 7 NUMBERS INDICATING END CAVITIES ON THIS SURFACE .062±.010 HIGH CHARACTERS
- 8 KEYS (2) AND KEY MOUNTING HARDWARE (2) PACKAGED WITH CONNECTOR.
- 9 TESTING: GROUP A AND B PER MIL-C-55302.
- 10 LETTERS INDICATING OUTSIDE ROWS ON THIS SURFACE.
- 11 CONTACT FINISH: .000050 GOLD OVER .000030 NICKEL OVER ENTIRE CONTACT.
- 12 STABILIZER EPOXIED TO HOUSING.
- 13 EPOXY ADDED TO AREA WHERE THE CONTACT POSTS EMERGE FROM THE STABILIZER, SEE TABLE FOR APPLICABLE PART NUMBERS.

REMARKS	MILITARY PART NUMBER	NUMBER OF CONTACTS	TYPE	NUMBER OF POSITIONS	PART NUMBER
11, 13	M55302/130-16	240	IV	240	1-447208-6
4	M55302/130-15	240	IV	240	1-447208-5
11, 13	M55302/130-14	240	III	240	1-447208-4
4	M55302/130-13	240	III	240	1-447208-3
11, 13	M55302/130-12	240	II	240	1-447208-2
4	M55302/130-11	240	II	240	1-447208-1
11, 13	M55302/130-10	240	I	240	1-447208-0
4	M55302/130-09	240	I	240	447208-9
11	M55302/130-08	160	IV	240	447208-8
4	M55302/130-07	160	IV	240	447208-7
11, 13	M55302/130-06	160	III	240	447208-6
4	M55302/130-05	160	III	240	447208-5
11, 13	M55302/130-04	160	II	240	447208-4
4	M55302/130-03	160	II	240	447208-3
11	M55302/130-02	160	I	240	447208-2
4	M55302/130-01	160	I	240	447208-1

THIS DRAWING IS A CONTROLLED DOCUMENT.

DIMENSIONS: INCHES. TOLERANCES UNLESS OTHERWISE SPECIFIED:

0 PLC	± .005
1 PLC	± .005
2 PLC	± .005
3 PLC	± .005 [0.13]
4 PLC	± .005
ANGLES	± .005

MATERIAL: SEE TABLE. FINISH: SEE TABLE.

APPROVED: D. MILLER. DATE: 6-1-90. NAME: D. MILLER. PRODUCT SPEC: RECEPTACLE ASSEMBLY, BOX, .100 C/L, W/KEYING HARDWARE.

SIZE: A1. CASE CODE: 00779. DRAWING NO: 447208. RESTRICTED TO: CUSTOMER DRAWING. SCALE: 5:1. SHEET: 1 OF 1. REV: G.