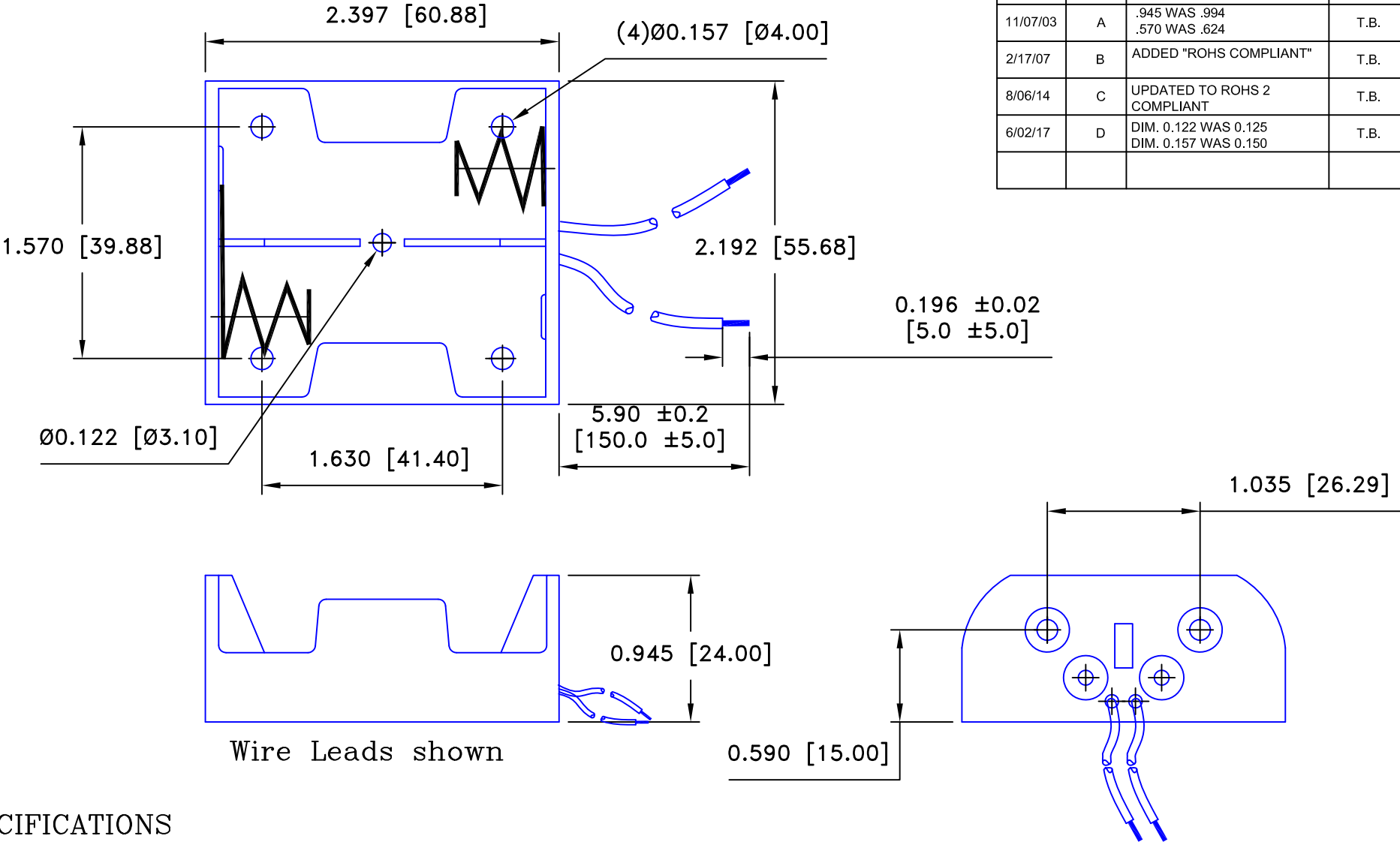


| Date | SYM | REVISION RECORD | AUTH | DR. | CK. |
|----------|-----|--|------|------|-----|
| 11/07/03 | A | .945 WAS .994 .570 WAS .624 | T.B. | B.S. | |
| 2/17/07 | B | ADDED "ROHS COMPLIANT" | T.B. | B.S. | |
| 8/06/14 | C | UPDATED TO ROHS 2 COMPLIANT | T.B. | B.S. | |
| 6/02/17 | D | DIM. 0.122 WAS 0.125 DIM. 0.157 WAS 0.150 | T.B. | B.S. | |
| | | | | | |




Wire Leads shown

SPECIFICATIONS

Plastic material - Polypropylene
 Flammability Rating -UL94-HB, UL File NO. E216959
 Temperature Range: -10°C to +100°C
 Springs - Nickel Plated Spring Steel
 Wire - 26 AWG, UL1007, CSA, TR64, 300V, 80°C
 Rivets - Brass, Nickel Plated
 CONTACT RESISTANCE: UNDER 50mΩ FOR +/- CONTACTS PER
 EIA-540J000

ROHS 2 COMPLIANT

| | | | |
|--------------------------------|---|-----------------|-------------------------|
| Tolerance (Except as noted) |  Memory Protection Devices, Inc 200 Broad Hollow Road, Farmingdale, New York 11735 | Scale 1=1 | Drawn By T.S. |
| | | | Approved By T.B. |
| decimal ±.5 (.020) | Title TWO "C" CELL HOLDER WITH 6" WIRE LEADS | | |
| Fractional ± .8 (.030) | | Date 6/02/17 | Drawing Number BH2CW |
| Angular ± 3° | | | |