

MATERIALS AND FINISHES

BODY, COUPLING NUT: BRASS OR ZINC  
PLATED NICKEL

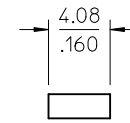
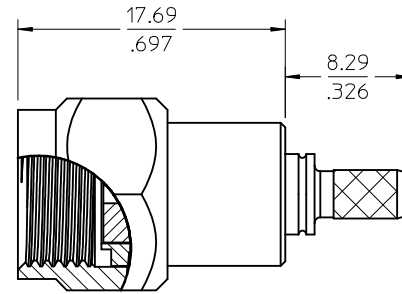
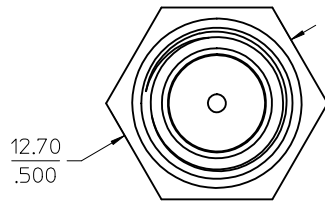
CRIMP TUBE: BRASS  
PLATED NICKEL

CONTACT: BRASS  
PLATED GOLD

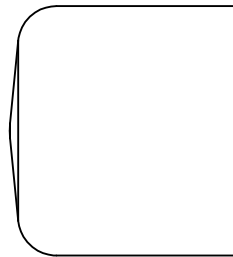
INSULATOR: TEFLON

CAP: VINYL (BLACK)

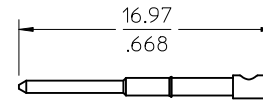
SNAP RING: BERYLLIUM COPPER



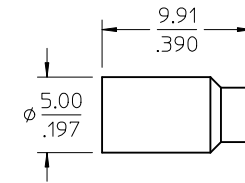
STIFFENER  
73356-0211 ONLY



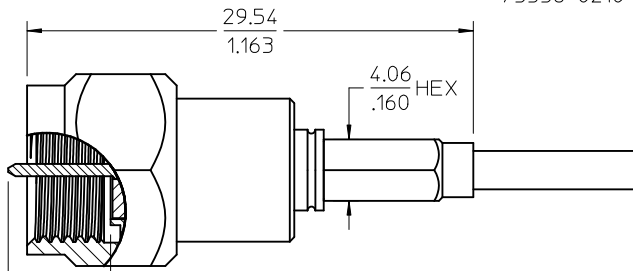
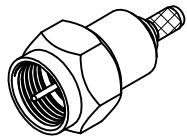
PROTECTIVE CAP  
73356-0210 ONLY



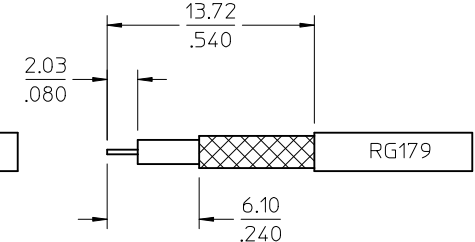
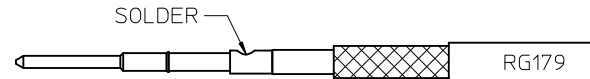
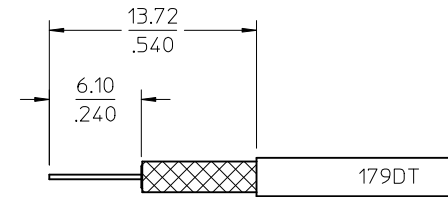
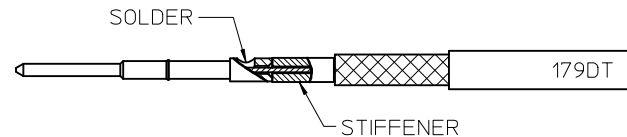
CONTACT



CRIMP TUBE



FOR 179DT INNER FOIL  
GOES INSIDE  
CONNECTOR REAR BODY



73356-0212	RG-179
73356-0211	BELDEN 179DT
73356-0210	RG-179
PART NO.	FOR CABLE

PS-89675-3640	ELECTRO PERFORMANCE
SPECIFICATION	DESCRIPTION

CHG: PS WAS -1710 EC NO: URF2012-0297 DRAWN: JWIENER 2011/12/02 CHKD: SSS 2011/12/02 APPR: JWIENER 2011/12/02 REV: B5	QUALITY SYMBOLS ▽=0 ▽=0	GENERAL TOLERANCES (UNLESS SPECIFIED) <table border="1"> <tr> <td></td> <td>mm</td> <td>INCH</td> </tr> <tr> <td>4 PLACES</td> <td>± .005</td> <td>± .0005</td> </tr> <tr> <td>3 PLACES</td> <td>± .005</td> <td>± .0005</td> </tr> <tr> <td>2 PLACES</td> <td>± .005</td> <td>± .0005</td> </tr> <tr> <td>1 PLACE</td> <td>± .005</td> <td>± .0005</td> </tr> </table> ANGULAR ± 2°		mm	INCH	4 PLACES	± .005	± .0005	3 PLACES	± .005	± .0005	2 PLACES	± .005	± .0005	1 PLACE	± .005	± .0005	DIMENSION STYLE MM/IN SCALE DESIGN UNITS INCH THIRD ANGLE PROJECTION	DRAWN BY LMB DATE 2000/10/20 CHECKED BY GMH DATE 2000/10/20 APPROVED BY JWIENER DATE 2010/03/31	TITLE F PLUG STRAIGHT FOR RG179 OR 179DT F-PC MOLEX INCORPORATED DOCUMENT NO. SD-73356-021 SHEET NO. 1 OF 1
		mm	INCH																	
	4 PLACES	± .005	± .0005																	
	3 PLACES	± .005	± .0005																	
2 PLACES	± .005	± .0005																		
1 PLACE	± .005	± .0005																		
DRAFT WHERE APPLICABLE MUST REMAIN WITHIN DIMENSIONS		MATERIAL NO. SEE TABLE																		
		SIZE C	THIS DRAWING CONTAINS INFORMATION THAT IS PROPRIETARY TO MOLEX INCORPORATED AND SHOULD NOT BE USED WITHOUT WRITTEN PERMISSION																	