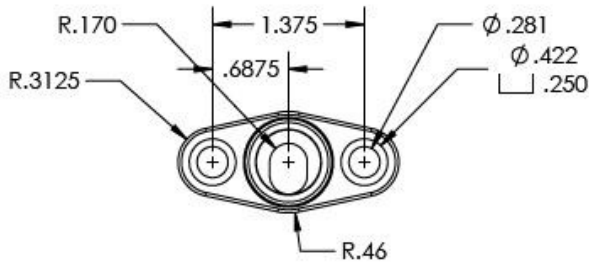


HEAVY DUTY GOOSENECK FLEX ARM

95184 16" Long, 3/8-16 Female, Direct Mount Base



ARM LENGTH	16" (406.4mm)
ARM MATERIAL	Steel
OUTSIDE DIAMETER	.695"
INSIDE DIAMETER	.325"
LOAD RATING	Max Load @ 90 Degrees: <u>2.5 pounds</u>
FEEL	Heavy Duty, Feels Stiff
MOUNTING STYLE	Screw Down, with Sheet Metal (#12 x 1 PPHSM) and Machine Screws (1/4-20) included
TOP FITTING	3/8-16 UNC Female Thread Male Thread Conversion Kit included with single use tube of Loctite and Male Stud
BASE FITTING	Direct Mount Fitting (Zinc Die Cast), Hole Spacing 1.375" on center
COVERING SLEEVE	PVC, Matte Black



800-346-0761

222 Cessna Street
Watertown, SD 57201

sales@moffattproducts.com

