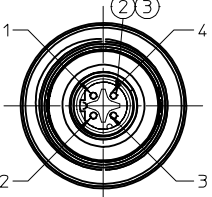
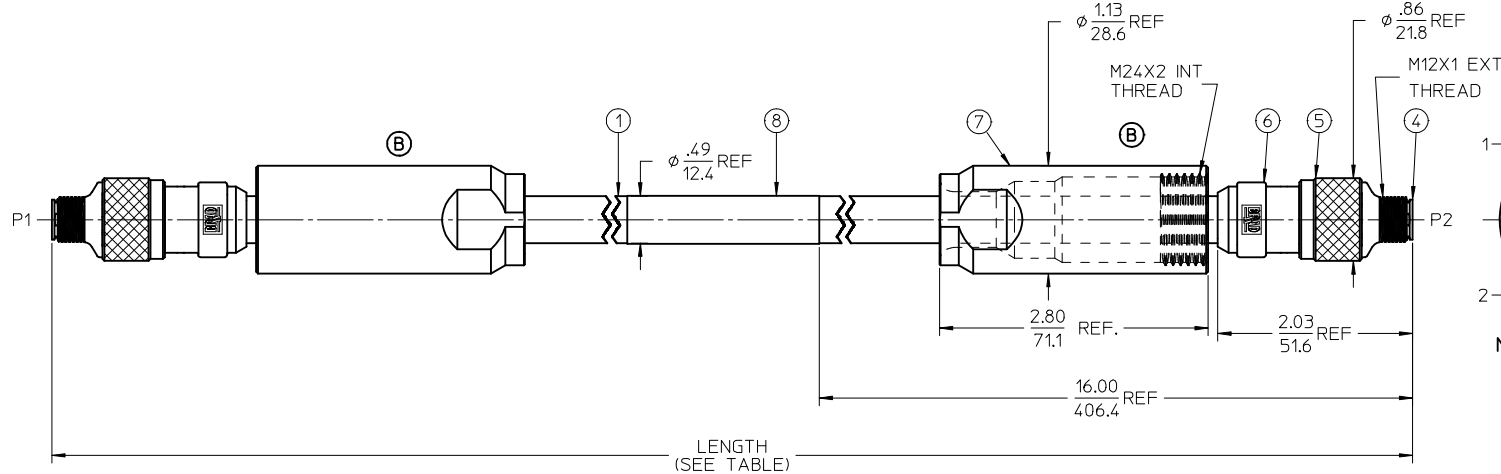
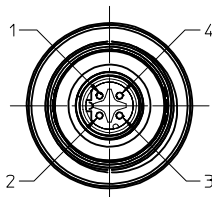
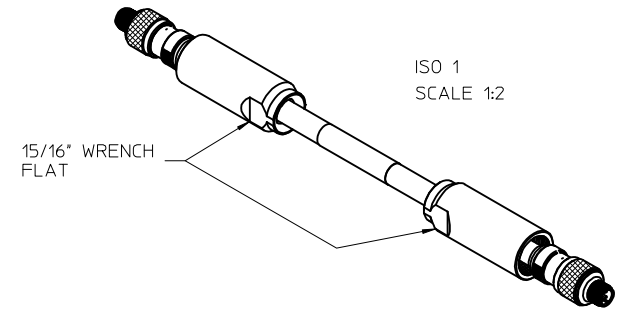
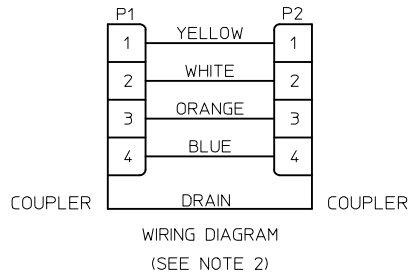


MATERIAL NO.	ENGINEERING NO.	LENGTH
1303045403	1303045403	1.0M +55.6mm -0 [3.28' +2.19' -0]
1303045404	1303045404	2.0M +88.9mm -0 [6.56' +3.50' -0]
1303045405	1303045405	3.0M +88.9mm -0 [9.84' +3.50' -0]
1303045407	1303045407	5.0M +165.1mm -0 [16.40' +6.50' -0]
1303045412	1303045412	10.0M +317.5mm -0 [32.81' +12.50' -0]



- NOTES:
1. COMPLIES WITH SAE J2839
  2. ASSEMBLY IS FULLY SHIELDED
  3. ELECTRICAL RATINGS:  
VOLTAGE 30V DC  
CURRENT: 1.5AMPS MAX
  4. COUPLING NUT TORQUE: HAND TIGHT  
MIN SUPPORT COVER TORQUE: 20 FT-LBS  
CONNECTOR TENSION BUSHING TORQUE: HAND TIGHT
  5. MATERIALS: SEE TABLE
  6. FINISHES: SEE TABLE
  7. ASSEMBLY IS RoHS COMPLIANT



ITEM	QTY	DESCRIPTION	MATERIAL	FINISH
8	1	LABEL	VINYL	YELLOW
7	2	SUPPORT COVER	STAINLESS STEEL	PASSIVATED
6	2	OVERMOLD	PBT	GREY
5	2	MALE COUPLING NUT, M12	STAINLESS STEEL	PASSIVATED
4	2	MALE HOUSING, D-CODE	ZINC DIE-CAST	CHROME
3	2	MALE INSULATOR, 4C	PBT	BLACK
2	8	MALE CONTACT PIN, 18AWG	Cu ALLOY	GOLD PLATED
1	1	CABLE, 18AWG, 4/C, SHIELDED	XRAD XLE JACKET	SEE WIRE DIAGRAM

REPLACED 1302011447  
 EC NO: IPG2016-1475  
 DRAWINGGUSTAFSON 2016/05/02  
 CHKD:HZL ELS 2016/05/20  
 APPR: BWOODMAN 2016/05/27

QUALITY SYMBOLS 	GENERAL TOLERANCES (UNLESS SPECIFIED)	DIMENSION STYLE IN/MM	SCALE 1:2	DESIGN UNITS INCH	THIRD ANGLE PROJECTION														
	<table border="1"> <thead> <tr> <th></th> <th>mm</th> <th>INCH</th> </tr> </thead> <tbody> <tr> <td>4 PLACES ±</td> <td>---</td> <td>---</td> </tr> <tr> <td>3 PLACES ±</td> <td>---</td> <td>±.005</td> </tr> <tr> <td>2 PLACES ±</td> <td>0.13</td> <td>±.010</td> </tr> <tr> <td>1 PLACE ±</td> <td>0.25</td> <td>±.020</td> </tr> </tbody> </table>		mm	INCH	4 PLACES ±	---	---	3 PLACES ±	---	±.005	2 PLACES ±	0.13	±.010	1 PLACE ±	0.25	±.020	DRAWN BY: LHARTMANN DATE: 2011/01/13 CHECKED BY: VOU DATE: 2011/02/22 APPROVED BY: BWOODMAN DATE: 2016/05/27	TITLE: M12 EX 300LB CORDSET 4P M/ME ST/ST E-NET #18/4 BLACK XLPE CBL MOLEX INCORPORATED	
	mm	INCH																	
4 PLACES ±	---	---																	
3 PLACES ±	---	±.005																	
2 PLACES ±	0.13	±.010																	
1 PLACE ±	0.25	±.020																	
DRAFT WHERE APPLICABLE MUST REMAIN WITHIN DIMENSIONS	SEE TABLE	MATERIAL NO.	DOCUMENT NO.	SHEET NO. 1 OF 1															
THIS DRAWING CONTAINS INFORMATION THAT IS PROPRIETARY TO MOLEX INCORPORATED AND SHOULD NOT BE USED WITHOUT WRITTEN PERMISSION																			