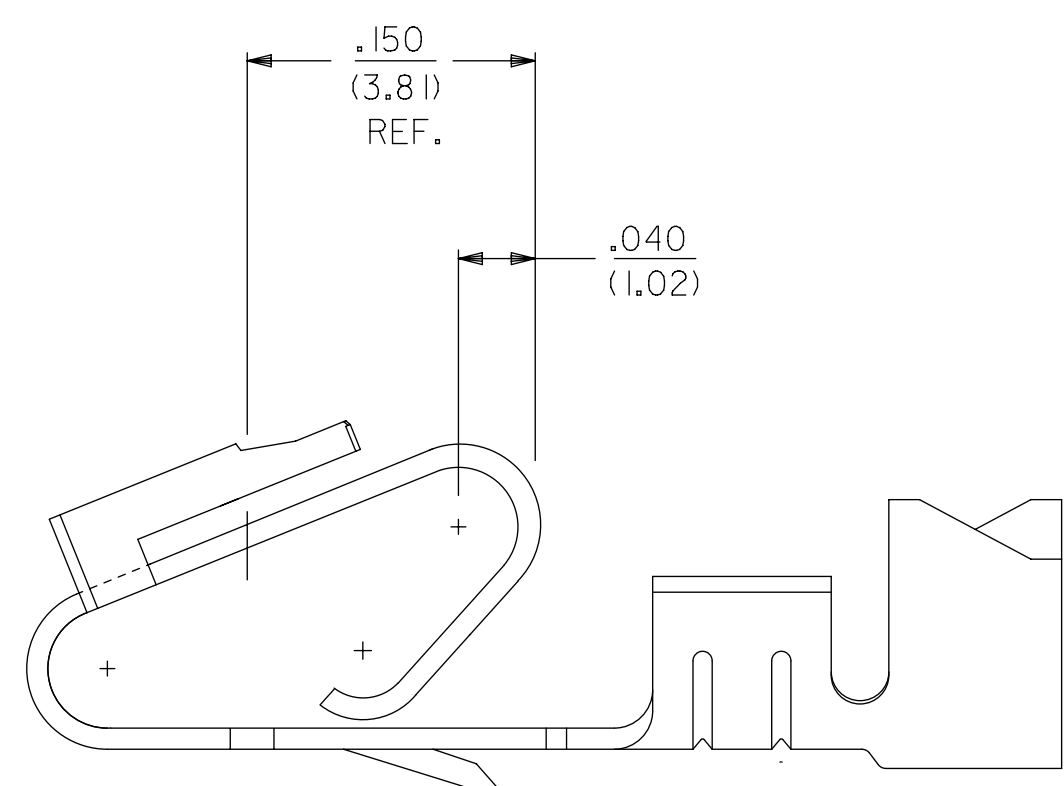
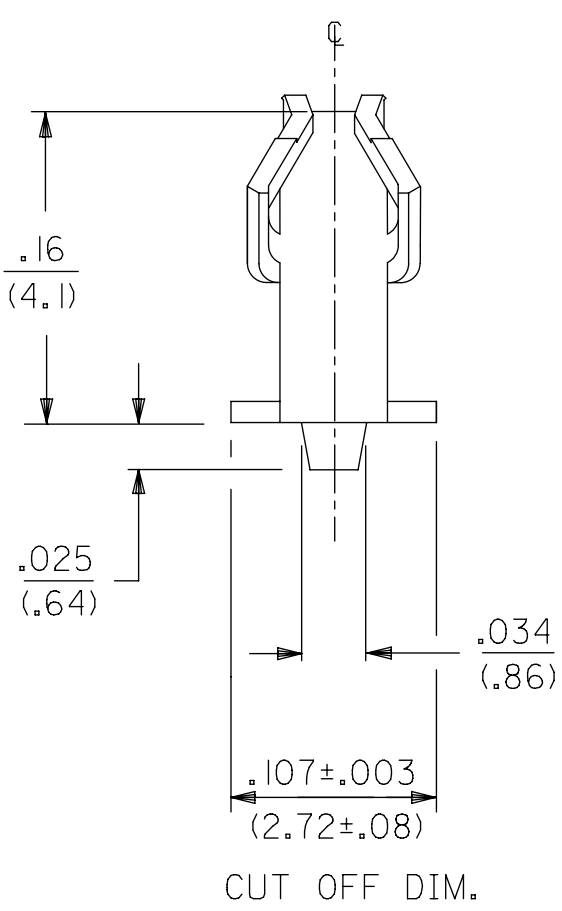


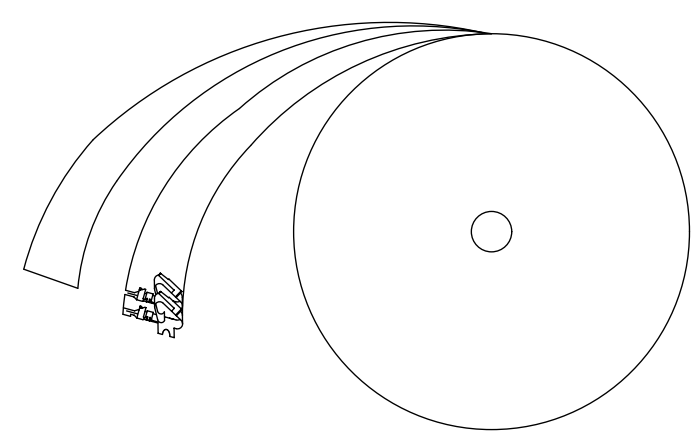
ALTERNATE GEOMETRY
SEE NOTE 10



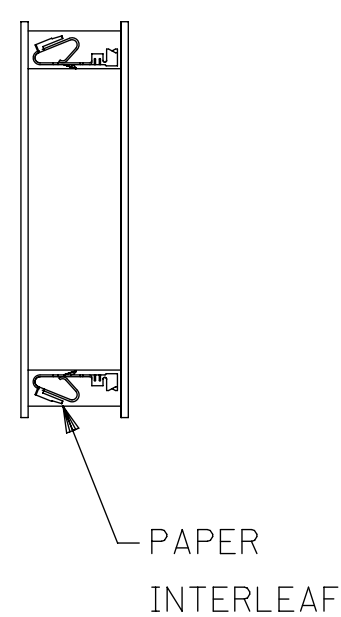
SELECTIVE PLATING
LOCATION



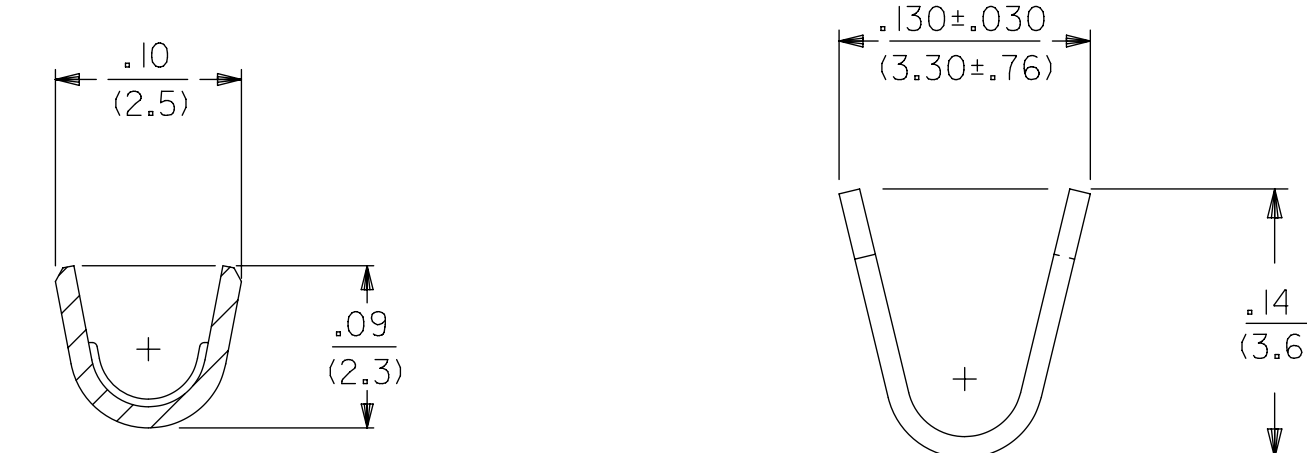
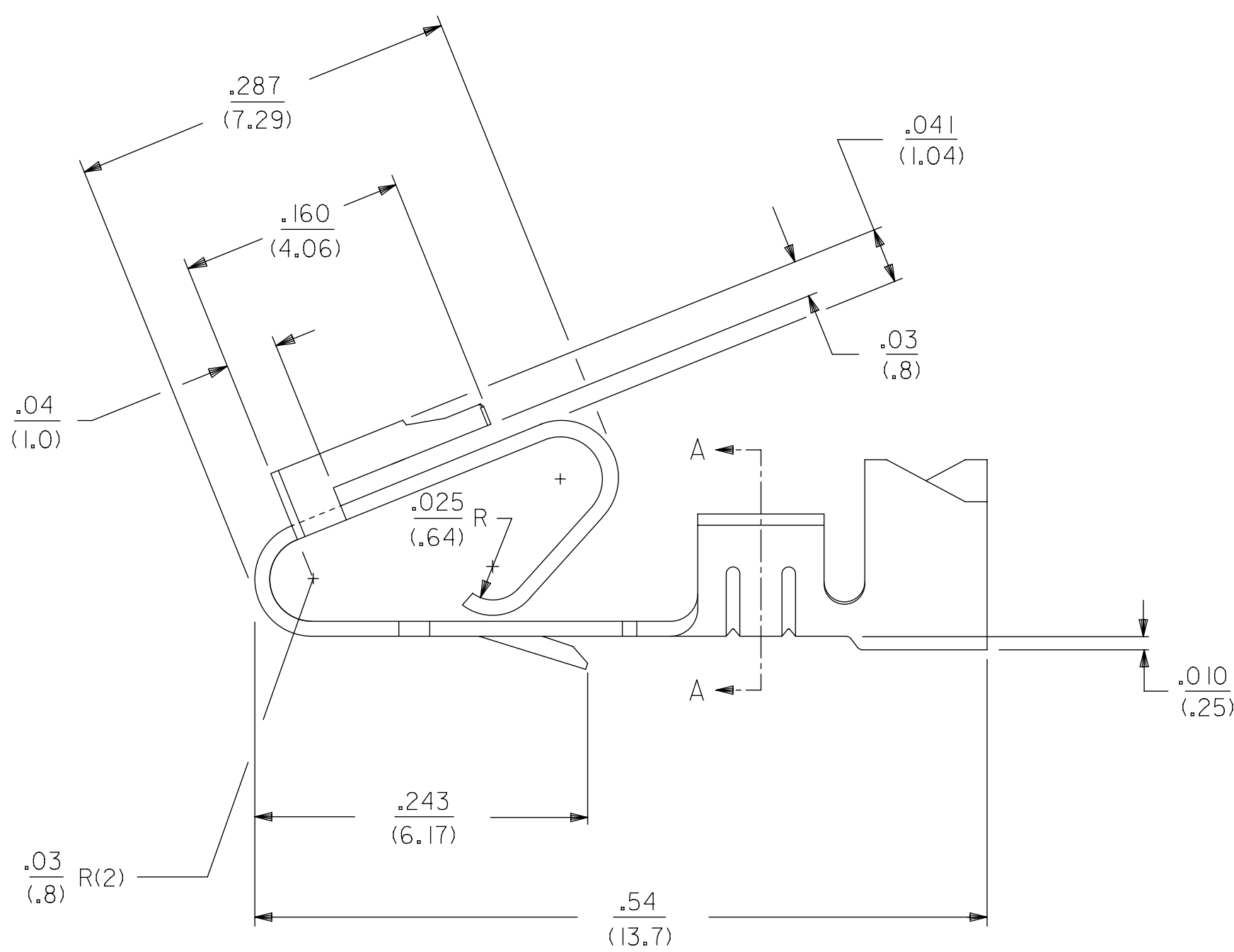
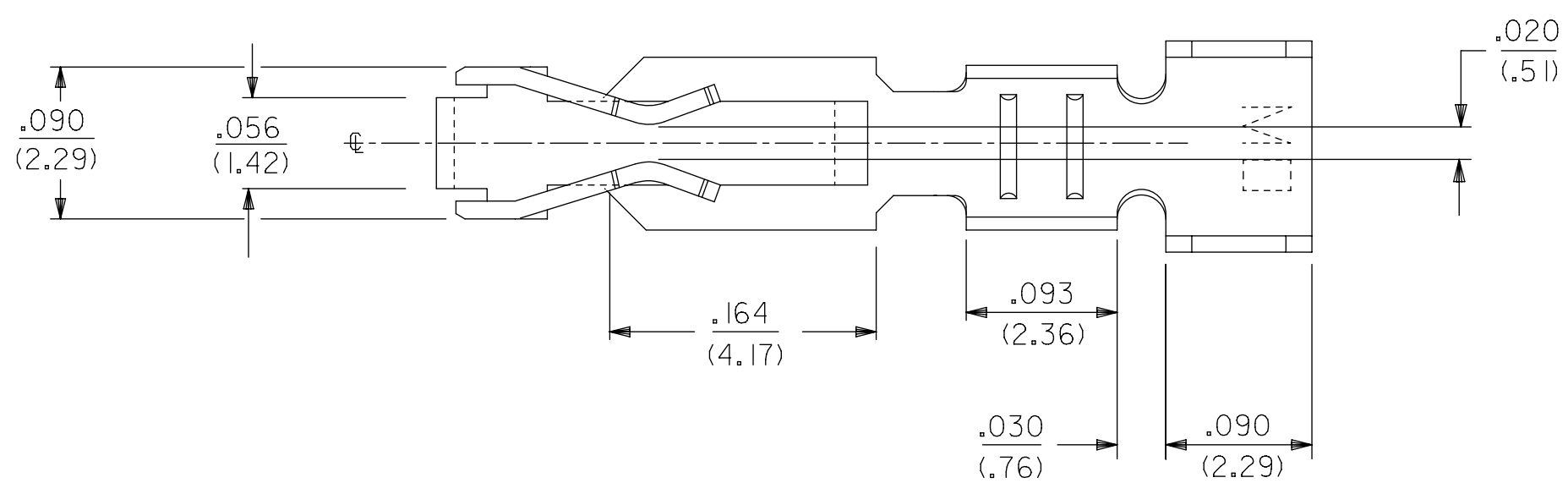
WINDING DETAIL "A"



WINDING DETAIL "B"



PAPER
INTERLEAF



SECTION A-A

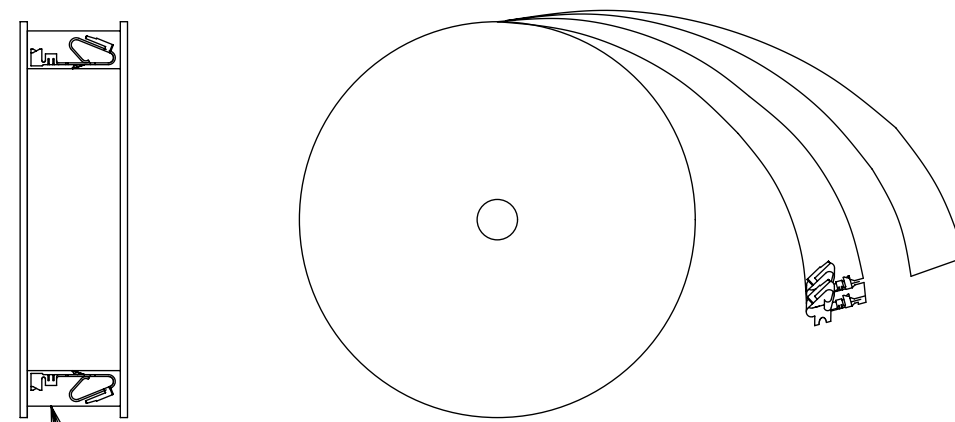
LEGEND: 6838-*(*)**

MATERIAL:
(.27)/.0106 THK
BLANK=BRASS
A=PHOS BRONZE

WINDING
A= PER DETAIL A
BLANK= PER DETAIL B
FORM
BLANK= CHAIN
L= LOOSE

PLATING
SEE NOTE 2

- NOTES:
1. MATERIAL: SEE LEGEND
 2. FINISH:
909 - OVERALL HOT TIN DIP: .000100/(0.00254) MIN.
154 - OVERALL TIN: .000100/(0.00254) MIN. OVER
.000050/(0.00127) MIN. NICKEL.
555 - SELECT HARD GOLD: .000015/(0.00038) MIN.
OVERALL NICKEL: .000030/(0.00076) MIN.
558 - SELECT HARD GOLD: .000030/(0.00076) MIN.
OVERALL NICKEL: .000050/(0.00127) MIN.
OVERALL HARD GOLD FLASH: .000002/(0.00005) MIN.
561 - SELECT HARD GOLD: .000030/(0.00076) MIN.
OVERALL NICKEL: .000050/(0.00127) MIN.
 3. PRODUCT SPECIFICATION: PS-40-02
 4. PACKAGING SPECIFICATION: CHAIN FORM: SEE PK-2759-002
LOOSE FORM: SEE PK-2759-001
 5. TERMINAL FOR USE IN HOUSING SERIES 6442 AND 41695.
 6. SEE 7258 SERIES FOR THIS PART WITH CRIMP FOR 22-26 AWG. WIRE.
 7. CRIMP FOR 18 TO 20 GA. WIRE WITH MAX. INSULATION DIA. OF .100/(2.79),
STRIP LENGTH OF .125/.100 / (3.18/2.54)
 8. DIMENSIONS GIVEN ACROSS CENTERLINES ARE SYMMETRICAL ABOUT
THOSE CENTERLINES WITHIN HALF THE TOTAL TOLERANCE.
 9. THIS PART CONFORMS TO CLASS B REQUIREMENTS OF COSMETIC SPECIFICATION PS-45499-002.
 10. ALTERNATE GEOMETRY PRESENT ON SOME PART NUMBERS. SEE SHEET 2.
 11. TEXT ON PART IS FOR REFERENCE ONLY. TEXT AND TEXT LOCATION MAY VARY
DEPENDING ON PART NUMBER AND/OR TOOL.



PAPER
INTERLEAF

SYMBOLS										THIS DRAWING CONTAINS INFORMATION THAT IS PROPRIETARY TO MOLEX ELECTRONIC TECHNOLOGIES, LLC AND SHOULD NOT BE USED WITHOUT WRITTEN PERMISSION											
DIMENSION UNITS		SCALE		CURRENT REV DESC: NOTE 4 UPDATED																	
IN/MM		1:1																			
GENERAL TOLERANCES (UNLESS SPECIFIED)										EC NO: 605479											
4 PLACES ±		±		DRWN: SS06 2018/09/17																	
3 PLACES ±		± 0.01		CHK'D: ISHWARG 2018/10/05																	
2 PLACES ±		± 0.015		APPR: ISHWARG 2018/10/05																	
1 PLACE ±		± 0.36		INITIAL REVISION:																	
0 PLACES ±		±		DRWN: GUZIK 1989/11/15																	
ANGULAR TOL ±		± 0.5 °		APPR: LENZ 1989/11/15																	
DRAFT WHERE APPLICABLE MUST REMAIN WITHIN DIMENSIONS										THIRD ANGLE PROJECTION		DRAWING		SERIES		MATERIAL NUMBER		CUSTOMER		SHEET NUMBER	
										D-SIZE		6838		SEE CHART		GENERAL MARKET		1 OF 2			

molex

TRIFURCON TERMINAL
CRIMP TYPE, .156 CENTERS 18 TO 20 AWG WIRE

PRODUCT CUSTOMER DRAWING

DOCUMENT NUMBER: **SD-6838** DOC TYPE: PSD DOC PART: 001 REVISION: AT

6838-(*)**

6838-A(*)**

PART NO.	ENG. NO.	
08-50-0187	6838-(P909)	SEE NOTE 1
08-50-0189	6838-(P909)L	SEE NOTE 1
08-50-0275	6838-(P909)-A	

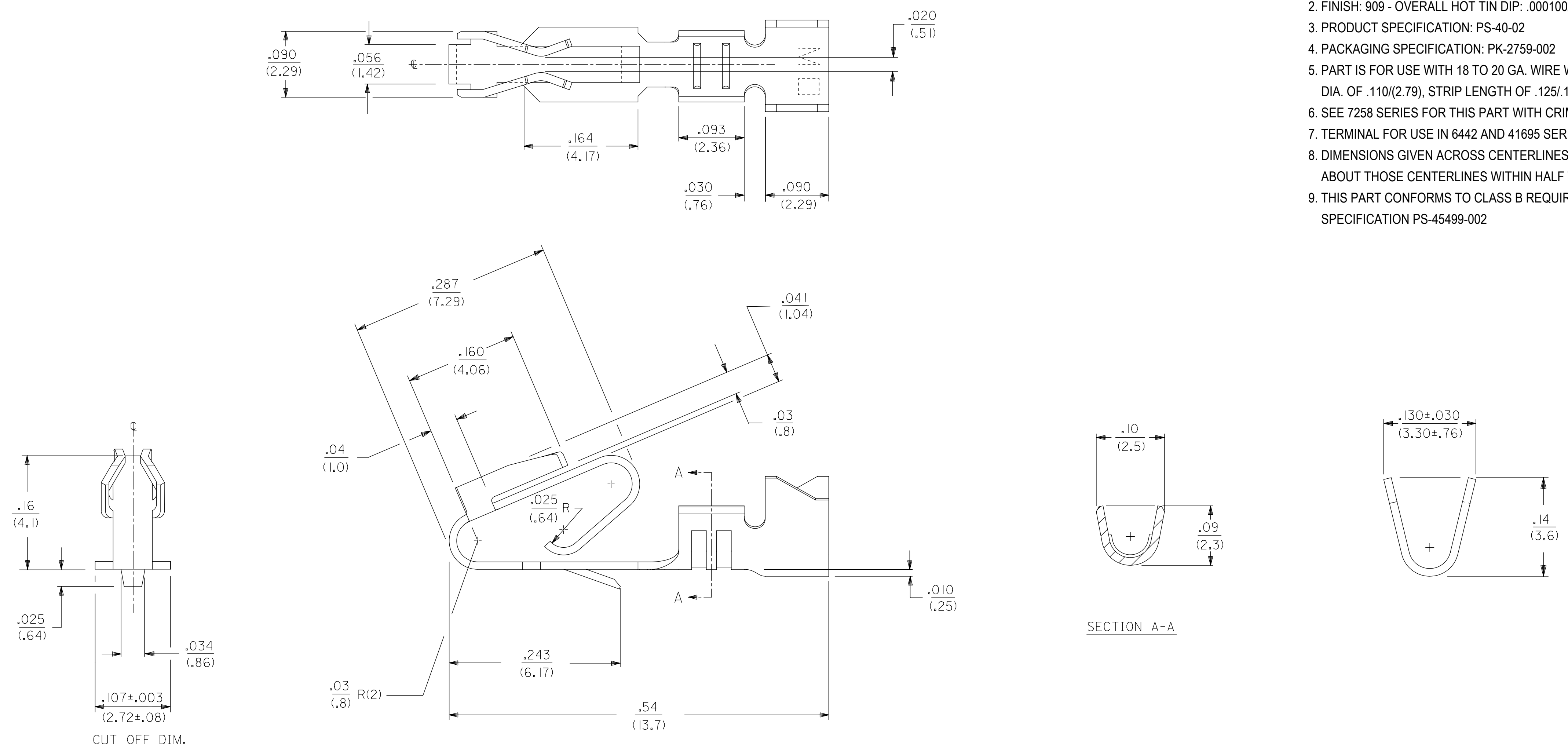
PART NO.	ENG. NO.	
08-58-0187	6838-A(P558)	
08-58-0189	6838-A(P558)L	
08-52-0112	6838-A(P909)	SEE NOTE 1
08-52-0113	6838-A(P909)L	SEE NOTE 1
08-50-0024	6838-A(154)	
08-50-0251	6838-A(154)L	
08-58-0105	6838-A(P555)	
08-58-0106	6838-A(P555)L	
08-58-0110	6838-A(P56 I)	SEE NOTE 1
08-58-0111	6838-A(P56 I)L	SEE NOTE 1
08-58-0118	6838-A(56 I)	
08-58-0119	6838-A(56 I)L	

NOTES:

1. PART MANUFACTURED WITH ALTERNATE GEOMETRY. SEE SHEET 1.

SYMBOLS		THIS DRAWING CONTAINS INFORMATION THAT IS PROPRIETARY TO MOLEX ELECTRONIC TECHNOLOGIES, LLC AND SHOULD NOT BE USED WITHOUT WRITTEN PERMISSION											
▽ = 0	INCH	SCALE		CURRENT REV DESC: NOTE 4 UPDATED									
		1:1											
▽ = 0	GENERAL TOLERANCES (UNLESS SPECIFIED)			EC NO: 605479									
▽ = 0		MM	INCH	DRWN: SS06		2018/09/17		TRIFURCON TERMINAL					
▽ = 0	4 PLACES	±	±	DRWN: ISHWARG		2018/10/05		CRIMP TYPE, .156 CENTERS 18 TO 20 AWG WIRE					
▽ = 0	3 PLACES	±	± 0.01	APPR: ISHWARG		2018/10/05		PRODUCT CUSTOMER DRAWING					
▽ = 0	2 PLACES	± 0.25	± 0.015	INITIAL REVISION:				DOCUMENT NUMBER					
▽ = 0	1 PLACE	± 0.36	±	DRWN: DRWN BY		1989/11/15		SD-6838					
▽ = 0	0 PLACES	±	±	APPR: APPR BY		1989/11/15		PSD 001 AT					
▽ = 0	ANGULAR TOL ± 0.5 °		THIRD ANGLE PROJECTION		DRAWING		SERIES		MATERIAL NUMBER		CUSTOMER		
▽ = 0	DRAFT WHERE APPLICABLE MUST REMAIN WITHIN DIMENSIONS					D-SIZE 6838		SEE CHART		GENERAL MARKET		SHEET NUMBER	
▽ = 0												2 OF 2	

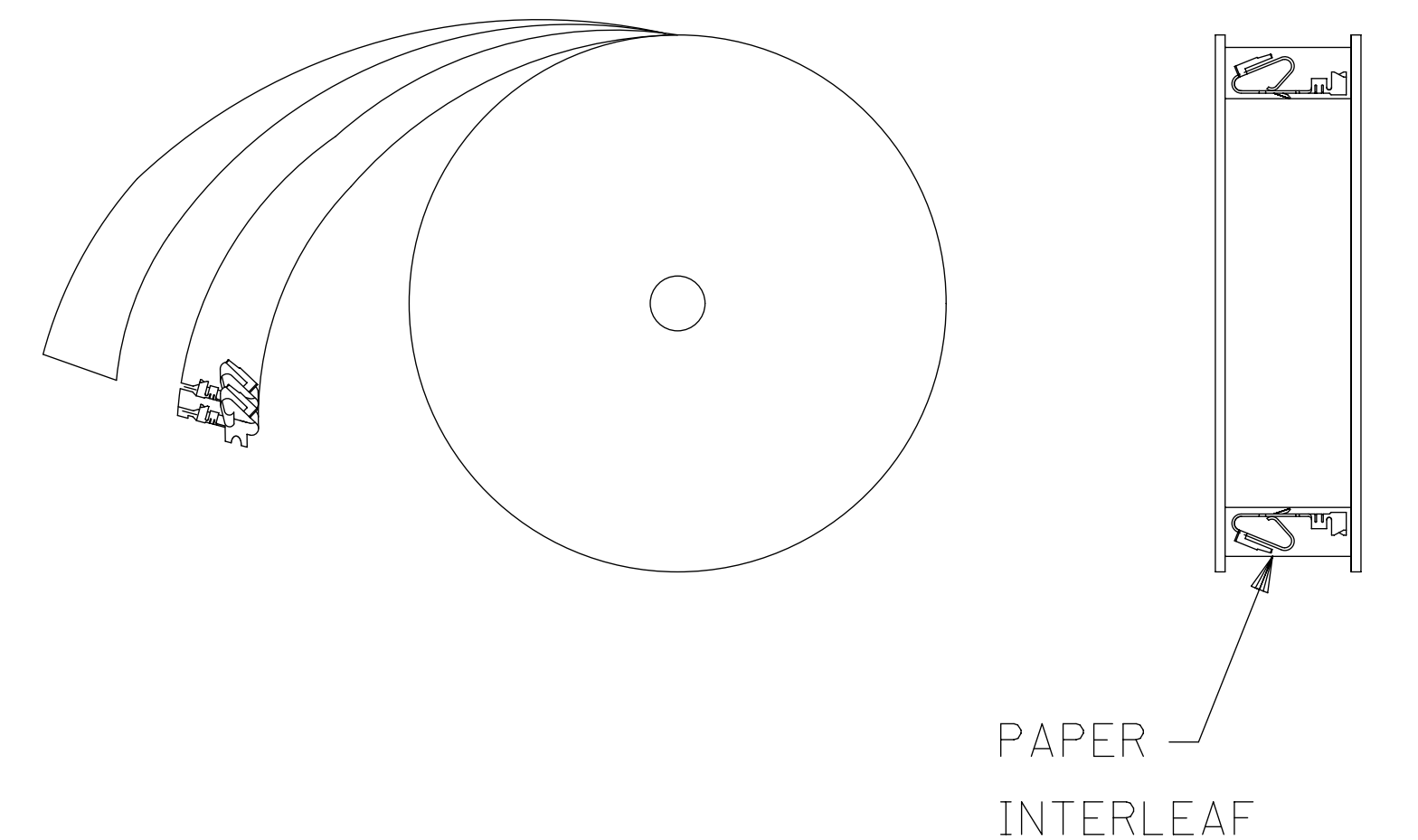
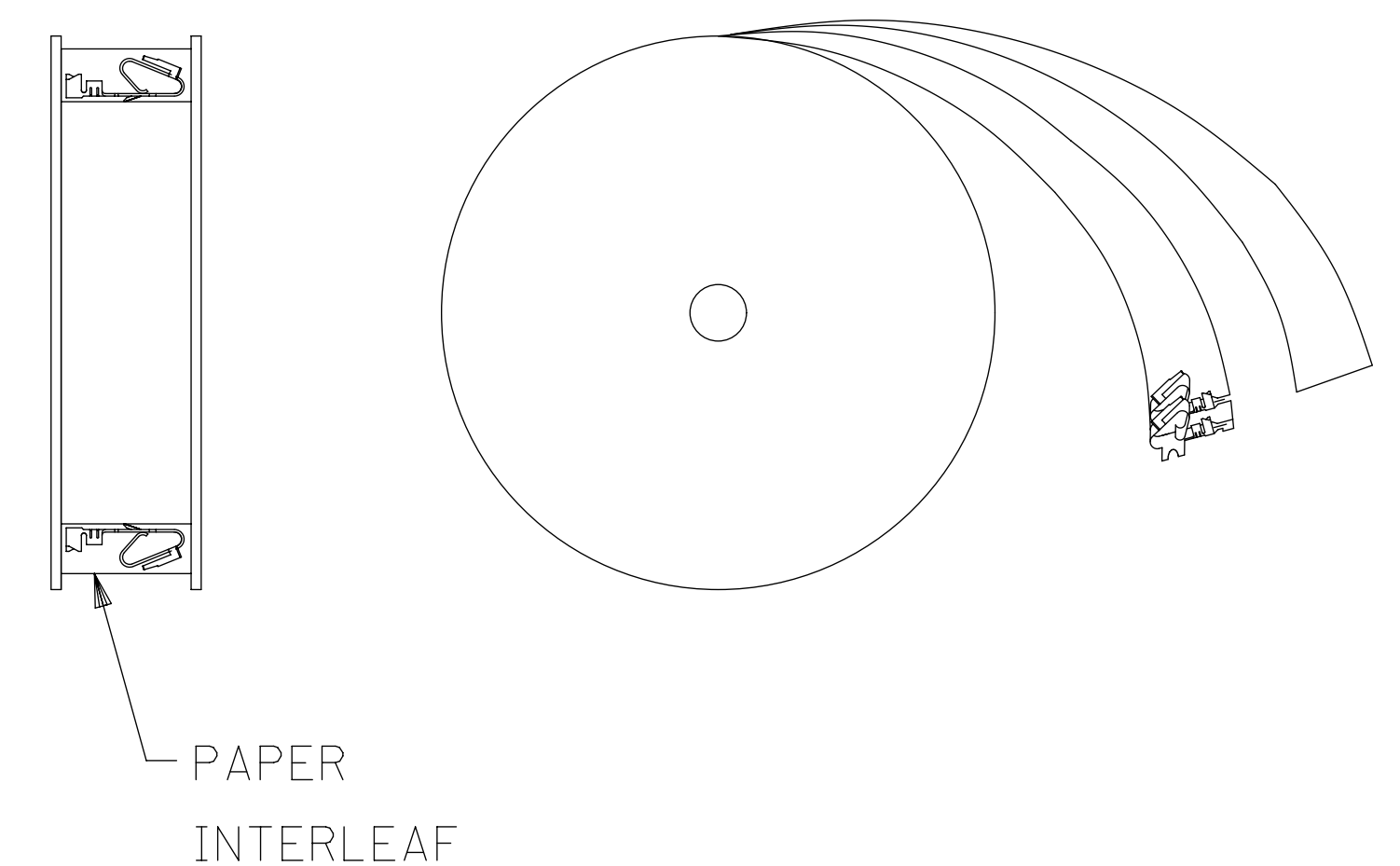
- NOTES:
1. MATERIAL: SEE LEGEND
 2. FINISH: 909 - OVERALL HOT TIN DIP: .000100/(0.00254) MIN.
 3. PRODUCT SPECIFICATION: PS-40-02
 4. PACKAGING SPECIFICATION: PK-2759-002
 5. PART IS FOR USE WITH 18 TO 20 GA. WIRE WITH MAX. INSULATION DIA. OF .110/(2.79), STRIP LENGTH OF .125/100 / (3.18/2.54)
 6. SEE 7258 SERIES FOR THIS PART WITH CRIMP FOR 22-26 AWG. WIRE
 7. TERMINAL FOR USE IN 6442 AND 41695 SERIES HOUSINGS
 8. DIMENSIONS GIVEN ACROSS CENTERLINES ARE SYMMETRICAL ABOUT THOSE CENTERLINES WITHIN HALF THE TOTAL TOLERANCE
 9. THIS PART CONFORMS TO CLASS B REQUIREMENTS OF COSMETIC SPECIFICATION PS-45499-002



LEGEND: 6838-*(P909)*
 MATERIAL: (27)/.0106 THK
 BLANK=BRASS
 WINDING
 BLANK= PER DETAIL B
 FORM
 BLANK= CHAIN
 PLATING PER SDES-88
 SEE NOTE 2

WINDING DETAIL "A"

WINDING DETAIL "B"



THIS DRAWING CONTAINS INFORMATION THAT IS PROPRIETARY TO MOLEX ELECTRONIC TECHNOLOGIES, LLC AND SHOULD NOT BE USED WITHOUT WRITTEN PERMISSION									
SYMBOLS		DIMENSION UNITS		SCALE		CURRENT REV DESC: NOTE 4 UPDATED			
▽ = 0		IN/MM		1:1					
▽ = 0		GENERAL TOLERANCES (UNLESS SPECIFIED)				EC NO: 605479			
▽ = 0						DRWN: SS06		2018/09/12	
▽ = 0		4 PLACES ±		±		CHK'D: ISHWARG		2018/10/05	
▽ = 0		3 PLACES ±		± 0.01		APPR: ISHWARG		2018/10/05	
▽ = 0		2 PLACES ±		0.25 ± 0.015		INITIAL REVISION:			
▽ = 0		1 PLACE ±		0.36 ±		DRWN: JJS		2004/07/29	
▽ = 0		0 PLACES ±		±		APPR: YM		2004/07/29	
▽ = 0		ANGULAR TOL ±		0.5 °		DRAWING		SERIES	
▽ = 0		DRAFT WHERE APPLICABLE MUST REMAIN WITHIN DIMENSIONS		THIRD ANGLE PROJECTION		D-SIZE		6838	
▽ = 0						MATERIAL NUMBER		CUSTOMER	
						50291639		GENERAL MARKET	
						DOCUMENT NUMBER		DOC TYPE	
						SD-6838-001		PSD	
						DOC PART		REVISION	
						001		C1	
						SHEET NUMBER		1 OF 1	