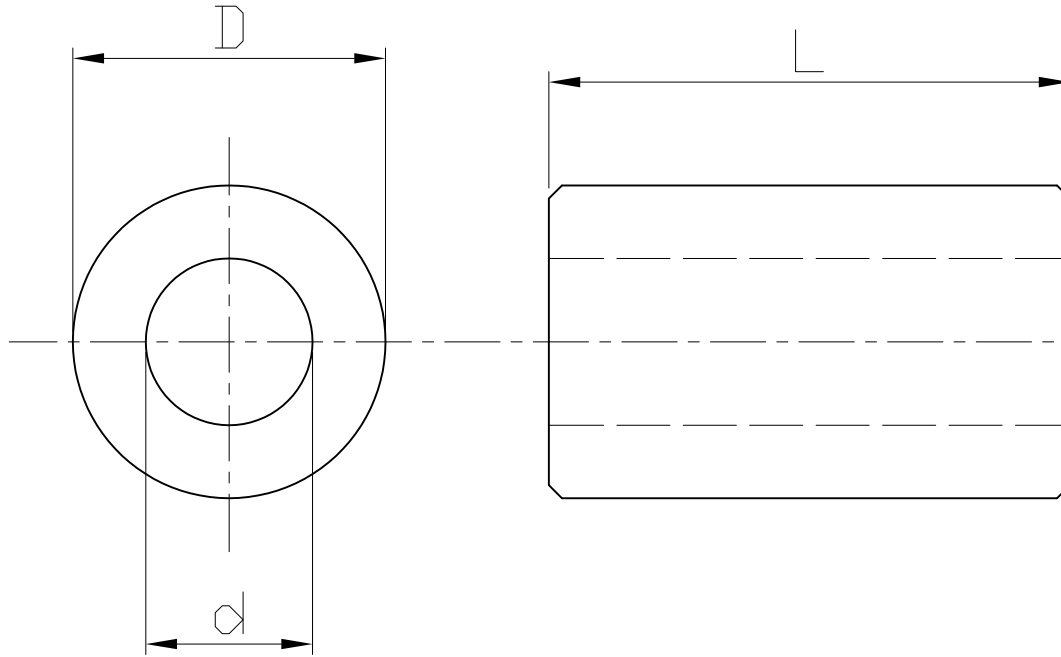


RoHS compliant



For M3-screws
PU=100 pcs

Option	Dimensions		
	L	D	d
A	5	6	3.2
B	8	6	3.2
C	10	6	3.2
D	12	6	3.2
E	15	6	3.2
G	20	6	3.2
N	6	6	3.2
O	4	6	3.2

Material: Brass, nickel plated

③

Scale	1:1					Date	Name	Customer-No.
TOLERANCE						Drawn	20.08.2009	Dean
X.	±X					Approved	10.03.2010	Andy
X.X	±X							ASSMANN WSW-No. V6254x
X.XX	±X	③	Add material & plating, add P/N	11.03.2015	A. Plate			Drawing-No.
DIM	TOL	②	Modify drawing layout	10.03.2010	Dean			ASS 0918 HS
X.°	±X°	①	Drawn	20.08.2009	Dean			rev03
X.X°	±X°	①	Drawn	20.08.2009	Dean	Replace	Sheet	
Angle	TOL	Id.	Modification	Date	Name			

③

Replace

Sheet