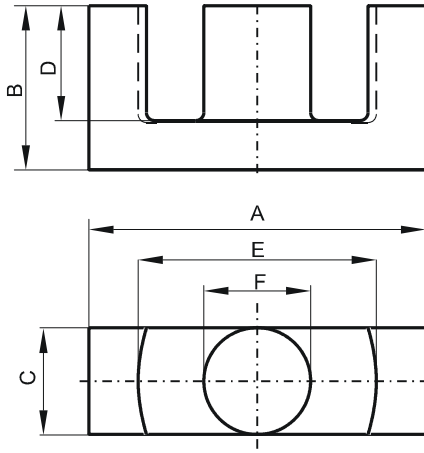


Specification for:

**0R45959EC**

110 Delta Drive  
Pittsburgh, PA 15238  
Phone: 412/696-1333  
Fax: 412/696-0333  
Email: magnetics@spang.com

**DIMENSIONS**



(mm)	Nominal:	Tol. min.:	Tol. max.:
<b>A</b>	59.8	-1.3	+ 1.3
<b>B</b>	31.0	-0.2	+ 0.2
<b>C</b>	21.65	-0.45	+ 0.45
<b>D</b>	22.1 MIN		
<b>E</b>	44.7	-1.09	+ 1.09
<b>F</b>	21.65	-0.45	+ 0.45
Eff. Parameters			
Ae mm <sup>2</sup>	Amin mm <sup>2</sup>	le mm	Ve mm <sup>3</sup>
368.0	360.0	139.0	51500

**INDUCTANCE**

AL value (nH)	Test conditions
Nom: 5747 Min.: 4310	10 kHz, < 0.5 mT, 25 °C

**MARKING**

0R45959EC PXXXXX
---------------------

**CORE LOSSES**

P <sub>i</sub> max	Test conditions
85 mW/cm <sup>3</sup> (4.352 W/set)	100 kHz, 100 mT, 100 °C
550 mW/cm <sup>3</sup> (28.16 W/set)	100 kHz, 200 mT, 100 °C

**NOTE**

Spec. modifications	Previous	Revised
2005-06-22	LOSSES:GENERAL R MATERIAL	LOSSES: DETAIL AS INDICATED