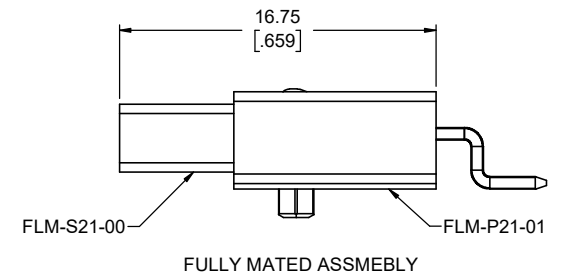
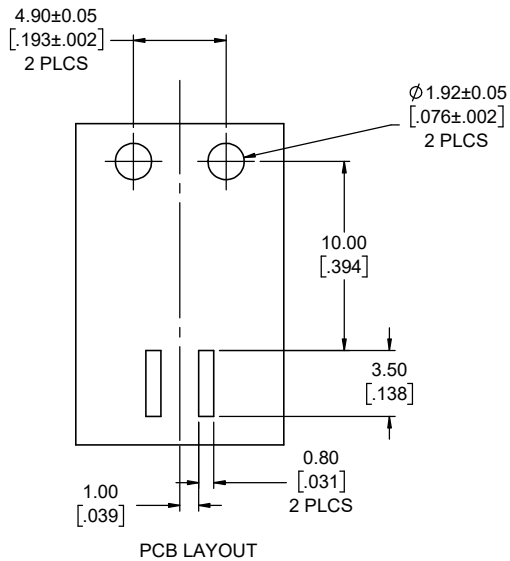


APPLICATION VIEW



FULLY MATED ASSMEBLY



PCB LAYOUT

**NOTES:**

- MATERIALS: ALL MATERIALS ARE RoHS COMPLIANT PER EU DIRECTIVE 2011/65/EU & AMENDMENTS
  - HOUSING: ENGINEERING THERMOPLASTIC, UL FLAMMABILITY RATING 94V-0, COLOUR BLACK
- ELECTRICAL CHARACTERISTICS
  - CURRENT RATING: 7A (18 AWG) OR 5A (20 AWG) OR 3A (22 AWG) PER CONTACT
  - DIELECTRIC WITHSTANDING VOLTAGE: 1000 VAC
  - INSULATION RESISTANCE: 500 MEGAOHMS
  - OPERATING TEMPERATURE: -40°C TO +105°C

AMPHENOL PART NUMBER: **FLM-P22-XX**

XX = 00 - BLACK HOUSING (STANDARD)  
 XX = W0 - WHITE HOUSING  
 XX = 01-99 CUSTOM CONFIGURATIONS

UNLESS SPECIFIED OTHERWISE	DRAWN	S.MUGAN	MAR27/20
PRIMARY UNITS MILLIMETERS	CHECKED	A.GREEN	MAR27/20
SECONDARY INCHES	M.E. APP'D		
REFERENCE IN PARENTHESES	Q.A. APP'D		
GENERAL TOLERANCES	DWG APPR.		
1 DECIMAL PLACE	ENG. REL. NO.		
2 DECIMAL PLACES ±0.10	REF.		
3 DECIMAL PLACES	THIRD ANGLE PROJECTION		
ANGULAR DEGREES	DO NOT SCALE DRAWING		

**Amphenol Canada Corp.**  
 Commercial Products

FLM SERIES,  
 RECEPTACLE BOARD MOUNT-SMT  
 RoHS COMPLIANT

DWG. NO. **P-FLM-P22-XX** REV **D**

CODE ID NO. 03554 DWG SIZE: X SCALE: 5:1 SHEET 1 OF 1