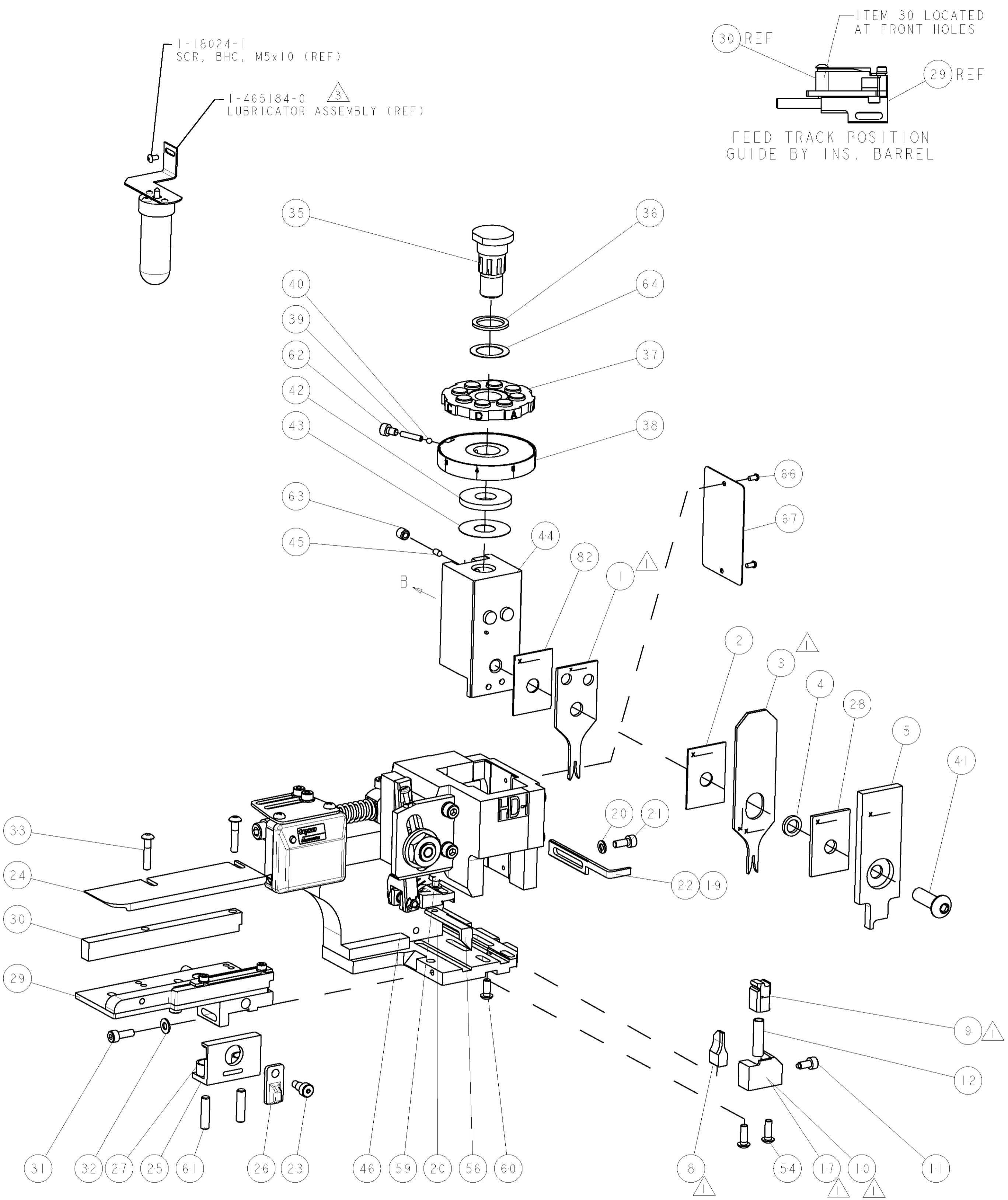
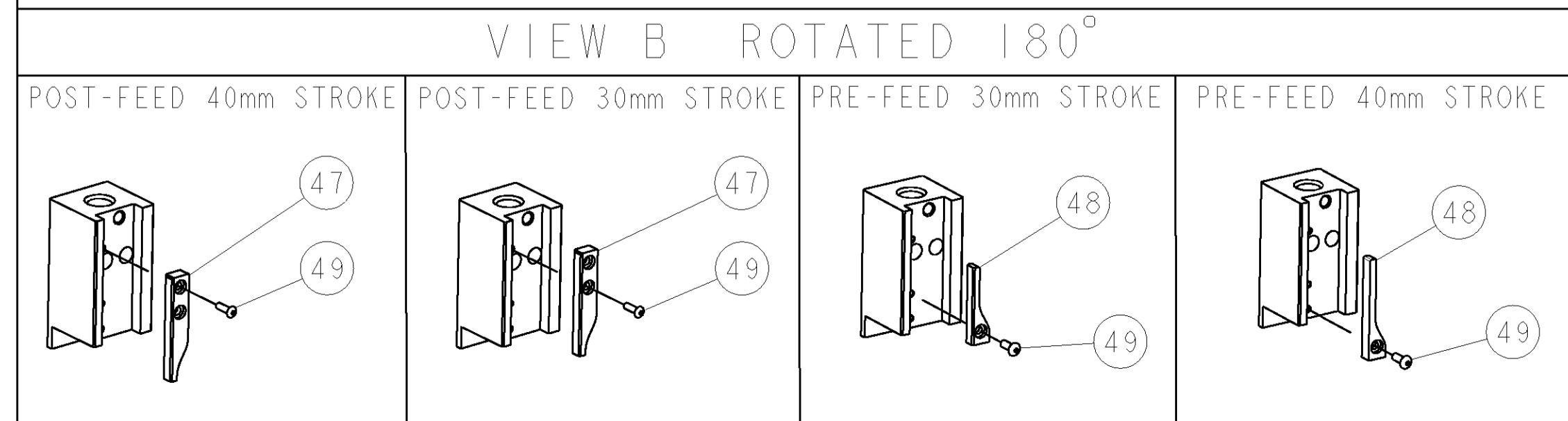


PART NUMBER	REV	TERMINATOR	FEED TYPE	DESCRIPTION
1426635-1	A	LEADMAKER	MECH POST FEED	CUTS CARRIER
1426635-2	A	BENCH	MECH PRE FEED	CUTS CARRIER
1426635-6	A	LEADMAKER	MECH POST FEED	CONTINUOUS CARRIER
7-1426635-1	A	LEADMAKER	MECH POST FEED	-1 AND SPARE PARTS
7-1426635-2	A	BENCH	MECH PRE FEED	-2 AND SPARE PARTS
7-1426635-6	A	LEADMAKER	MECH POST FEED	-6 AND SPARE PARTS
7-1426635-7	A	-	-	SPARE PARTS KIT

CRIMP DATA		CENVALSA TERMINAL		TYCO CRIMP SPECS	
TERMINAL NAME: SERIES 2044 CONTACT					
CRIMP	SIZE	TYPE	RANGE		
WIRE	1.22 [ .048 IN ]	F	28-22 AWG		
INSUL	1.57 [ .062 IN ]	F	0.89-1.30 [ .035-.051 IN ]		
WIRE STRIP LENGTH		APPL INSTRUCTIONS			
2.50-3.30 [ .098-.134 IN ]		408-8322			
TERMINAL APPL SPEC		FEED		5.00 [ .197 IN ]	
TERMINALS APPLIED					
TYCO TERM PN	MANUF TERM PN	TYCO TERM PN	MANUF TERM PN		
1949326-1	2044-2000	1949326-5	2044-6000		
1949326-2	2044-3000	1949326-6	2044-7000		
1949326-3	2044-4000	-	-		
1949326-4	2044-5000	-	-		
WIRE SIZE	CRIMP HEIGHT	PINPN & LENGTH [ IN ]			
0.50mm <sup>2</sup>	0.89 ± 0.05 [ .035 ± .002 IN ]	354779-6 [ .3020 ]			
22 AWG	0.84 ± 0.05 [ .033 ± .002 IN ]	1-354779-2 [ .3050 ]			
24 AWG	0.76 ± 0.05 [ .030 ± .002 IN ]	1-354779-9 [ .3085 ]			
26 AWG	0.71 ± 0.05 [ .028 ± .002 IN ]	2-354779-3 [ .3105 ]			
28 AWG	0.69 ± 0.05 [ .027 ± .002 IN ]	2-354779-5 [ .3115 ]			

- △ RECOMMENDED SPARE PARTS.
- 2. GREASE RAM, CAM, CAM FOLLOWER AND FEED ROD LIGHTLY.
- △ CERTAIN TERMINALS REQUIRE LUBRICATION. REFER TO THE APPLICATOR INSTRUCTION SHEET FOR MORE INFORMATION.
- 4. LUBRICATE DAILY PER THE APPLICATOR INSTRUCTION SHEET SUPPLIED WITH THE APPLICATOR.
- △ ALL CRIMP DATA CALCULATED BY TYCO ELECTRONICS UK LTD.
- △ WIRE RANGE SHOWN IS THAT OF THE TERMINAL.
- △ INSULATION RANGE SHOWN IS THAT OF THE APPLICATOR.
- △ WIRE SIZE IS SPECIFIC TO ORIGINAL CUSTOMER.



SET UP GAGE  
458637-3

LOC	DIST	REV	DESCRIPTION	DATE	BY	APPV
A	66		SEE ECO-07-010806	08MAY2007	DP	MC

-	-	-	-	-	-	-	-	-	-	73
-	-	-	-	-	-	-	-	-	-	72
-	1	1	1	1	1	1	1338705-1	DOCUMENTATION PACKAGE	-	71
-	-	-	-	-	-	-	-	-	-	70
-	-	-	-	-	-	-	-	-	-	69
-	-	-	-	-	-	-	-	-	-	68
-	1	1	1	1	1	1	461264-1	PLATE, IDENTIFICATION	-	67
-	2	2	2	2	2	2	21017-2	SCREW, DRIVE	-	66
-	-	-	-	-	-	-	-	-	-	65
-	1	1	1	1	1	1	986950-1	WASHER, FLAT PRECISION	-	64
-	1	1	1	1	1	1	3-18031-0	SCR, SET, CUP POINT M6 X 6.0	-	63
-	1	1	1	1	1	1	18023-9	SCR, SKT HD CAP M4 X 6.0	-	62
-	2	2	2	2	2	2	2-18032-5	SCR, SET, FLT POINT M5 X 20.0	-	61
-	1	1	1	1	1	1	18024-7	SCR, BTN SKT HD CAP (M4 X 10.0)	-	60
-	1	1	1	1	1	1	5-18022-2	SCR, HEX HD CAP M4 X 8.0	-	59
-	-	-	-	-	-	-	-	-	-	58
-	-	-	-	-	-	-	-	-	-	57
-	1	1	1	1	1	1	1338685-1	PAWL, FEED	-	56
-	-	-	-	-	-	-	-	-	-	55
-	2	2	2	2	2	2	18024-8	SCR, BTN SKT HD CAP (M4 X 12.0)	-	54
-	-	-	-	-	-	-	-	-	-	53
-	-	-	-	-	-	-	-	-	-	52
-	-	-	-	-	-	-	-	-	-	51
-	-	-	-	-	-	-	-	-	-	50
-	1	1	1	1	1	1	18024-3	SCR, BTN SKT HD CAP (M3 X 10.0)	-	49
-	-	-	-	-	-	-	1338675-1	CAM, UNIVERSAL PRE FEED	-	48
-	-	-	-	-	-	-	1338676-1	CAM, UNIVERSAL POST-FEED	-	47
-	1	1	1	1	1	1	1320999-3	APPLICATOR SUBASSEMBLY, HDI	-	46
-	1	1	1	1	1	1	690191-1	PLUG, NYLON	-	45
-	1	1	1	1	1	1	1338660-1	RAM	-	44
-	1	1	1	1	1	1	690125-1	SHIM SUB-ASSY	-	43
-	1	1	1	1	1	1	690124-4	WASHER, RAM (.135)	-	42
-	1	1	1	1	1	1	2-18024-6	SCR, BTN SKT HD CAP (M8 X 25.0)	-	41
-	1	1	1	1	1	1	23241-1	BALL, STEEL	-	40
-	1	1	1	1	1	1	2-22278-7	SPRING, COMPRESSION	-	39
-	1	1	1	1	1	1	1320922-4	DISC, ADJUST, INSULATION CRIMP	-	38
-	1	1	1	1	1	1	354777-1	WIRE DISC, ASSEMBLY	-	37
-	1	1	1	1	1	1	22480-5	SPRING, COMPRESSION	-	36
-	1	1	1	1	1	1	690212-1	POST, RAM	-	35
-	-	-	-	-	-	-	-	-	-	34
-	2	2	2	2	2	2	1-18024-0	SCR, BTN SKT HD CAP (M4 X 20.0)	-	33
-	1	1	1	1	1	1	18027-2	WASHER, FLAT, REG M4	-	32
-	1	1	1	1	1	1	1-18023-2	SCR, SKT HD CAP M4 X 12.0	-	31
-	1	1	1	1	1	1	1-1320908-7	SPACER, STRIP GUIDE	-	30
-	1	1	1	1	1	1	1633073-1	STRIP GUIDE ASSEMBLY	-	29
-	1	1	1	1	1	1	2-455888-0	SPACER, CRIMPER	-	28
-	2	2	2	2	2	2	1-22284-0	SPRING, COMPRESSION	-	27
-	1	1	1	1	1	1	356835-1	LEVER, DRAG RELEASE	-	26
-	1	1	1	1	1	1	240792-1	DRAG, TERMINAL	-	25
-	1	1	1	1	1	1	1320928-1	PLATE, STRIP GUIDE	-	24
-	1	1	1	1	1	1	980371-4	SCR, SKT HD SHLDR 5.0 DIA X 6.0	-	23
-	1	1	1	1	1	1	690472-2	STRIPPER	-	22
-	1	1	1	1	1	1	1-18023-1	SCR, SKT HD CAP M4 X 10.0	-	21
-	2	2	2	2	2	2	18025-2	WASHER, SPRG LOCK, REG M4	-	20
-	-	-	-	-	-	-	690472-1	STRIPPER	-	19
-	-	-	-	-	-	-	-	-	-	18
-	1	1	1	1	1	1	1338684-1	SHEAR HOLDER, FRONT	-	17
-	-	-	-	-	-	-	-	-	-	16
-	-	-	-	-	-	-	-	-	-	15
-	-	-	-	-	-	-	-	-	-	14
-	-	-	-	-	-	-	-	-	-	13
-	1	1	1	1	1	1	3-22280-3	SPRING, COMPRESSION	-	12
-	1	1	1	1	1	1	356885-4	STOP, SHEAR	-	11
-	-	-	-	-	-	-	1320921-1	SHEAR HOLDER, FRONT, CUT	-	10
-	1	1	1	1	1	1	462006-1	FLOATING SHEAR, FRONT	-	9
-	1	2	2	2	1	1	3-1633139-7	ANVIL, COMBINATION	-	8
-	-	-	-	-	-	-	-	-	-	7
-	-	-	-	-	-	-	-	-	-	6
-	1	1	1	1	1	1	2-455889-0	DEPRESSOR, SHEAR	-	5
-	1	1	1	1	1	1	238011-7	BLOCK, CRIMPER SPACER	-	4
-	1	2	2	2	1	1	5-683453-9	CRIMPER, INSULATION PREMIUM	-	3
-	1	1	1	1	1	1	455888-8	SPACER, CRIMPER	-	2
-	1	2	2	2	1	1	9-568176-9	CRIMPER, WIRE	-	1

ITEM NO	DESCRIPTION	ITEM NO
84		
83		
82	SPACER, CRIMPER	82
81		
80		
79		
78		
77		
76		
75		
74		
73		
72		
71		
70		
69		
68		
67		
66		
65		
64		
63		
62		
61		
60		
59		
58		
57		
56		
55		
54		
53		
52		
51		
50		
49		
48		
47		
46		
45		
44		
43		
42		
41		
40		
39		
38		
37		
36		
35		
34		
33		
32		
31		
30		
29		
28		
27		
26		
25		
24		
23		
22		
21		
20		
19		
18		
17		
16		
15		
14		
13		
12		
11		
10		
9		
8		
7		
6		
5		
4		
3		
2		
1		
0		
-1		
-2		
-3		
-4		
-5		
-6		
-7		
-8		
-9		
-10		
-11		
-12		
-13		
-14		
-15		
-16		
-17		
-18		
-19		
-20		
-21		
-22		
-23		
-24		
-25		
-26		
-27		
-28		
-29		
-30		
-31		
-32		
-33		
-34		
-35		
-36		
-37		
-38		
-39		
-40		
-41		
-42		
-43		
-44		
-45		
-46		
-47		
-48		
-49		
-50		
-51		
-52		
-53		
-54		
-55		
-56		
-57		
-58		
-59		
-60		
-61		
-62		
-63		
-64		
-65		
-66		
-67		
-68		
-69		
-70		
-71		
-72		
-73		
-74		
-75		
-76		
-77		