

# AI-TWIN 2X16 -16 WH - Ferrule

1213207

<https://www.phoenixcontact.com/pc/products/1213207>

Please be informed that the data shown in this PDF document is generated from our online catalog. Please find the complete data in the user documentation. Our general terms of use for downloads are valid.

Ferrule, sleeve length: 16 mm, length: 31 mm, color: white



## Your advantages

- These special ferrules allow chain bridges to be set up with ease
- The TWIN ferrules provide a practical way of crimping two conductors in one ferrule
- Different versions of the individual TWIN ferrules can be selected for specific applications

## Commercial data

Item number	1213207
Packing unit	50 pc
Minimum order quantity	50 pc
Product key	BH3413
Catalog page	Page 486 (C-3-2019)
GTIN	4055626280875
Weight per piece (including packing)	1.61 g
Weight per piece (excluding packing)	1.61 g
Customs tariff number	85369010
Country of origin	DE

1213207

<https://www.phoenixcontact.com/pc/products/1213207>

## Technical data

### Product properties

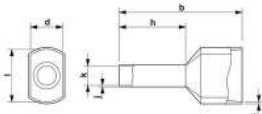
Product type	Cable end sleeve
Conductor category	stranded conductors, class 2, 5, 6 / B, C, K, M

### Connection data

#### Conductor connection

Conductor cross section flexible max.	16 mm <sup>2</sup>
Conductor cross section AWG max.	6
Stripping length	21 mm

### Dimensions

Dimensional drawing	
Length	31 mm
Sleeve length	16 mm
Maximum stripping length	21 mm
Ferrule diameter	8.5 mm
Sleeve wall thickness	0.2 mm
Insulating collar thickness	0.5 mm
Inner dimensions of the insulating collar	8.8 mm

### Material specifications

Color	white
Material	CU-DHP
Flammability rating according to UL 94	HB
Coating	tin-plated (galvanic)
Components	free from silicone and halogen

### Mechanical properties

#### Technical data

Sleeve length	16 mm
---------------	-------

### Environmental and real-life conditions

#### Ambient conditions

Permanent temperature	105 °C (-40 °C no load / 0 °C dynamic load)
Short-term temperature	120 °C

# AI-TWIN 2X16 -16 WH - Ferrule

1213207

<https://www.phoenixcontact.com/pc/products/1213207>



## Standards and regulations

Design according to standard

DIN 46228-4

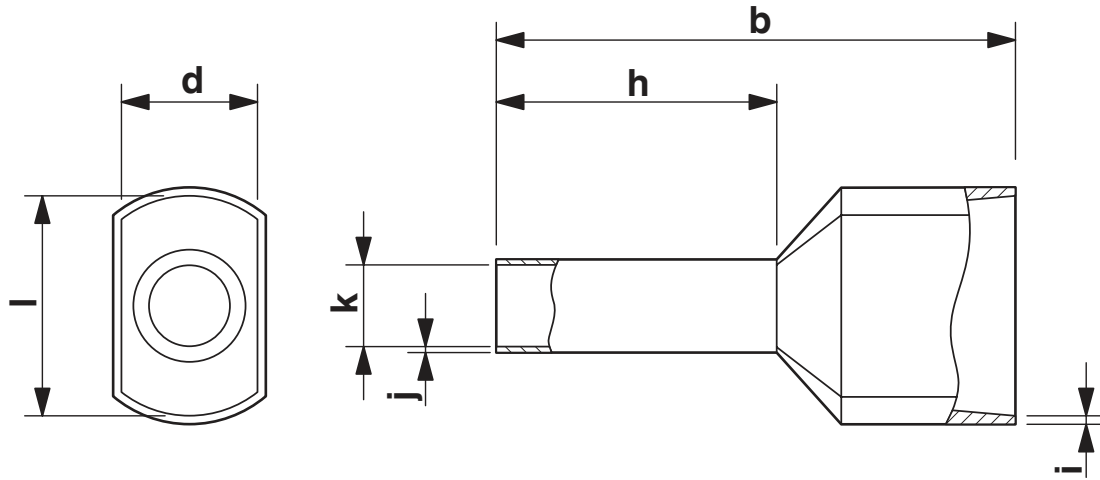
# AI-TWIN 2X16 -16 WH - Ferrule

1213207

<https://www.phoenixcontact.com/pc/products/1213207>

## Drawings

Dimensional drawing



Length (b), sleeve length (h), insulating collar inner dimension (d), sleeve diameter (k), insulating collar thickness (i), sleeve wall thickness (j)

# AI-TWIN 2X16 -16 WH - Ferrule



1213207

<https://www.phoenixcontact.com/pc/products/1213207>

## Classifications

### ECLASS

ECLASS-11.0	27400201
ECLASS-13.0	27400201
ECLASS-12.0	27400201

### ETIM

ETIM 8.0	EC000005
----------	----------

### UNSPSC

UNSPSC 21.0	27121700
-------------	----------

# AI-TWIN 2X16 -16 WH - Ferrule



1213207

<https://www.phoenixcontact.com/pc/products/1213207>

## Environmental product compliance

China RoHS	Environmentally friendly use period: unlimited = EFUP-e
	No hazardous substances above threshold values

# AI-TWIN 2X16 -16 WH - Ferrule

1213207

<https://www.phoenixcontact.com/pc/products/1213207>



## Accessories

### CRIMPFOX 16R TWIN - Crimping pliers

1212845

<https://www.phoenixcontact.com/pc/products/1212845>



Crimping pliers, for TWIN ferrules according to UL 486F, three marked die stations, unlockable pressure lock, lateral entry

---

Phoenix Contact 2023 © - all rights reserved  
<https://www.phoenixcontact.com>

PHOENIX CONTACT GmbH & Co. KG  
Flachsmarktstraße 8  
D-32825 Blomberg  
+49 (0) 5235-3 00  
[info@phoenixcontact.com](mailto:info@phoenixcontact.com)