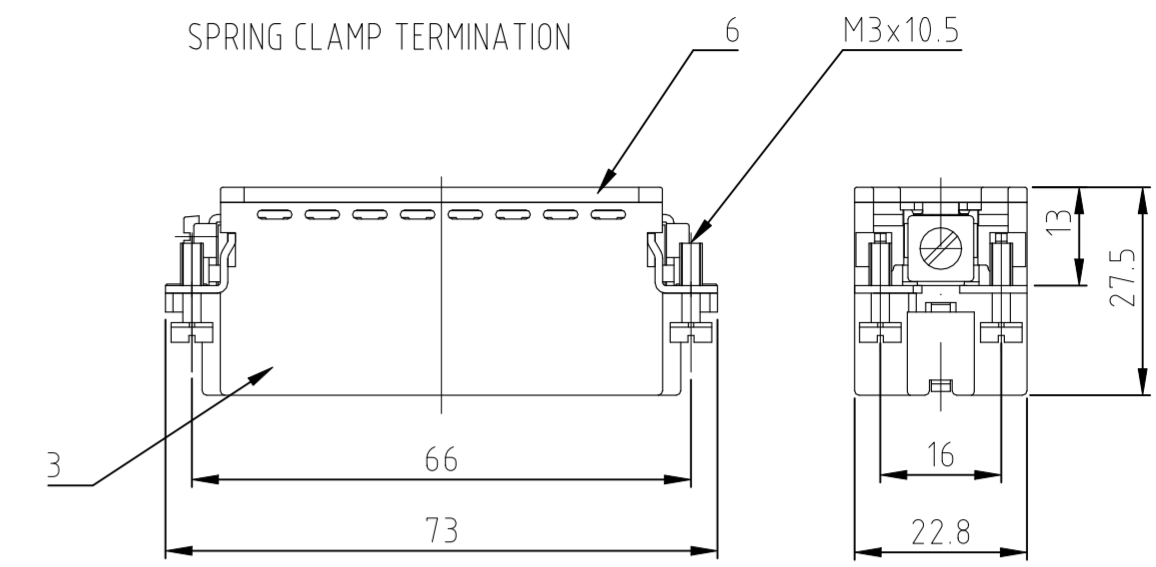
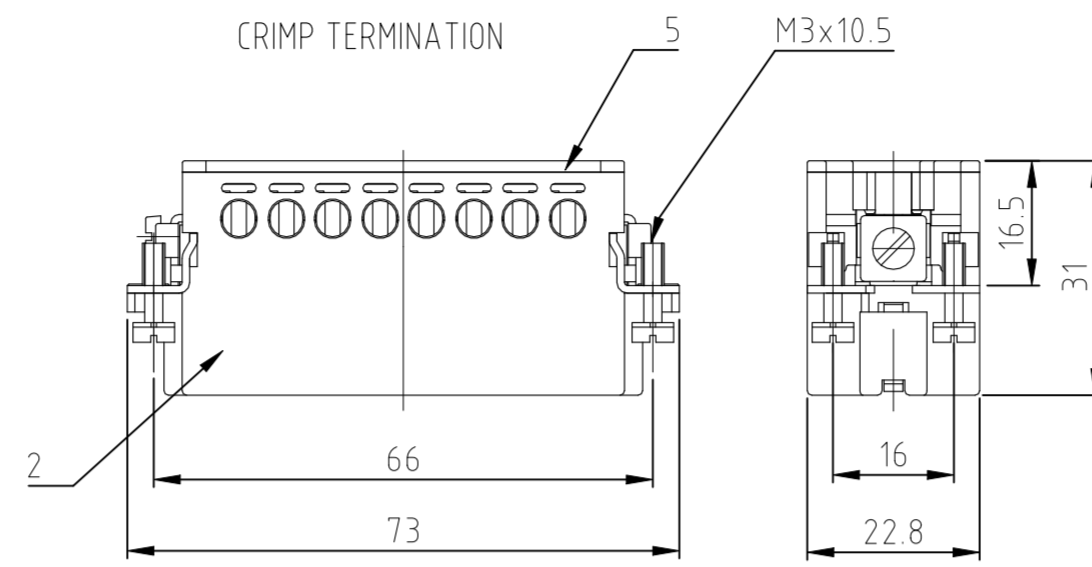
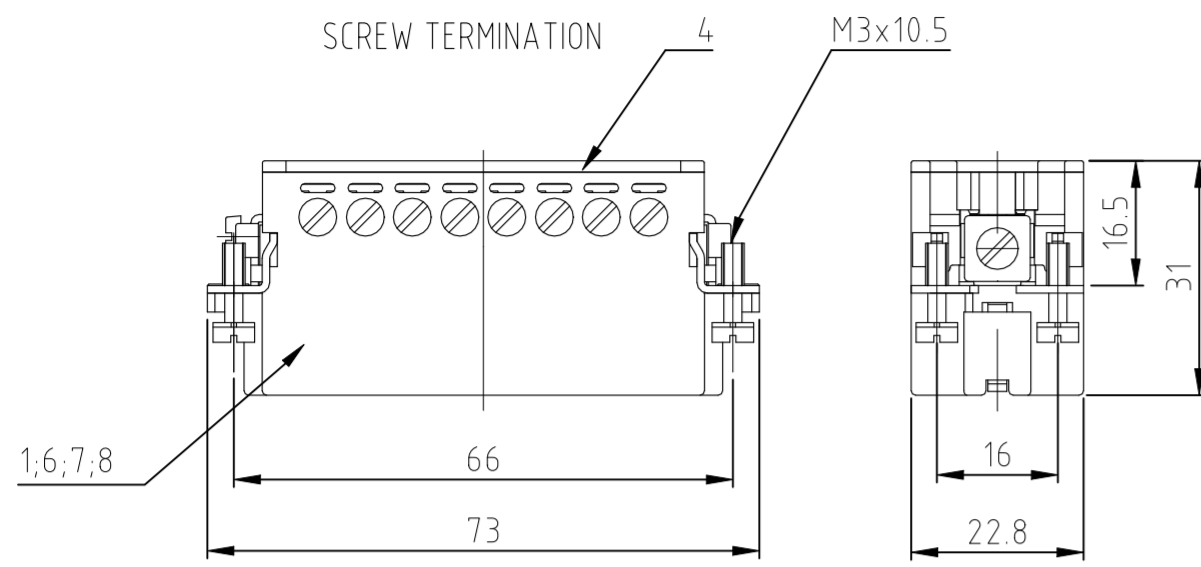
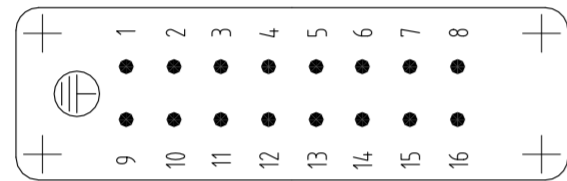


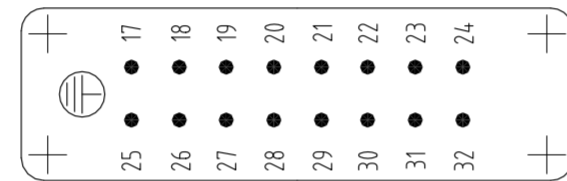
REVISIONS				
P	LTR	DESCRIPTION	DATE	APVD
D7	ECR-21-123577	BESCHREIBUNG	08JUL2022	RK JB



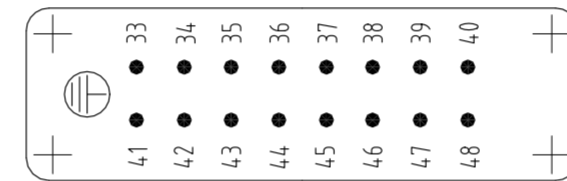
Contact arrangement / view from termination side



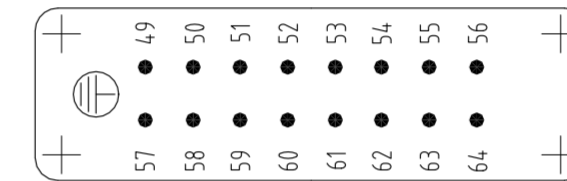
Contact arrangement / view from termination side



Contact arrangement / view from termination side



Contact arrangement / view from termination side



NOTES:

1 SUITABLE CRIMP CONTACTS: SERIES HE/HA
OUTER DIMENSIONS OF INSULATION: MAX. Ø3,2 MM

2 SUITABLE HOOD SIZE 5; 7; 9; 11: SERIES HA; HD
SUITABLE INSERTION AND EXTRACTION TOOL:
SCREWDRIVER 0,5x3 DIN 5264

3 Strip lenght: Screw conection 10mm
Spring clamp conection 10mm Crimp conection 7.5mm

4 STANDARDS:
DIN EN 61984; DIN EN 60664-1

5 PACKAGING:
5 SETS IN A CARTON, PRE-MOUNTED

6 SPECIAL PACKAGING: Krauss-Maffei
PACKAGING UNIT: 300 PIECES

7 SPECIAL PACKAGING: Krauss-Maffei
PACKAGING UNIT: 150 PIECES

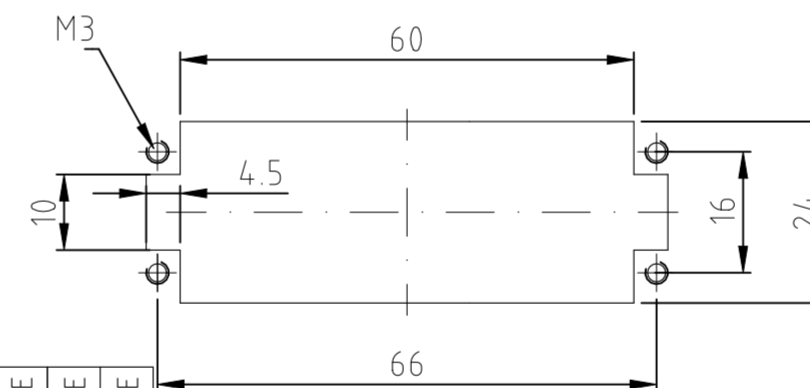
8 SPECIAL PACKAGING: AIS
PACKAGING UNIT: 250 PIECES

9 SPECIAL PACKAGING: WIELAND
PACKAGING UNIT: 100 PIECES

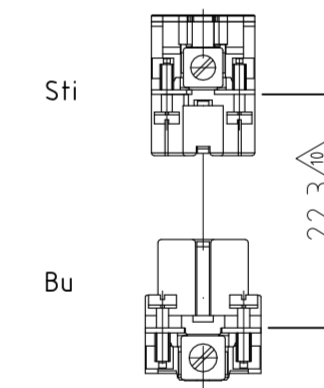
SEE TE CONNECTIVITY QUALITYMANAGEMENT PROCEDURE NO. 1.12

Panel cut-out for contact insert

when used without housing



Assembling instruction



Distance for safety
CONTACT MARKING MAX. 24 mm

1-3	1-2	1-0	0-4	0-7	0-6	0-5	2-9	1-9	7-9	7-8	1-8	2-8	1-7	7-7	2-7	1-1	2-3	1-1	DESCRIPTION / BENENNUNG	MATERIAL	COLOR / FARBE	ITEM NO. POS.	REMARKS / BEMERKUNGEN
																			Pin insert screw	PBT	light beige	8	with stainless steel-fixing screw
																			Pin insert screw	PBT	light beige	7	with stainless steel-fixing screw
																			Pin insert screw	PBT	light beige	6	with AU contact
																			Cover	PBT	light beige	5	
																			Cover	PBT	light beige	4	
1	1	1	1	1	1	1	1	1	1	1	1	1	1	1	1	1	1	1	Cover	PBT	light beige	3	
																			pin insert spring clamp	PBT	light beige	2	
																			pin insert crimp/screw	PBT	light beige	1	

THIS DRAWING IS A CONTROLLED DOCUMENT.
DIESE ZEICHNUNG IST EIN KONTROLLIERTES DOKUMENT.

DIMENSIONS: MASSENHEITEN mm
TOLERANCES, UNLESS OTHERWISE SPECIFIED: ALLGEMEINTOLERANZEN

0 PLC
1 PLC
2 PLC
3 PLC
4 PLC

FINISH / OBERFLAECHE / FARBE

ORDERING TEXT / BESTELTEXT

DWN 09.02.2000
Schneider

CHK 09.02.2000
Schweiger

APVD -

NAME -

PRODUCT SPEC 108-74007

APPLICATION SPEC 114-77009

WEIGHT -

CUSTOMER DRAWING / KUNDENZEICHNUNG

SCALE MASSSTAB 1:1

TE Connectivity

Male insert
HA.16.Sti.C

SIZE A2
CAGE CODE 00779

DRAWING NO. ZEICHNUNGS-NR. 1103416

RESTRICTED TO NUR FUER

SHEET BLATT 1 von 1

REV D7