

THIS DRAWING IS UNPUBLISHED.

RELEASED FOR PUBLICATION

20

© COPYRIGHT 20 BY -

ALL RIGHTS RESERVED.

LOC CE DIST 00

REVISIONS

P	LTR	DESCRIPTION	DATE	DWN	APVD
	E	REVISED PER ECR 11-020518	24OCT2011	DLF	SB

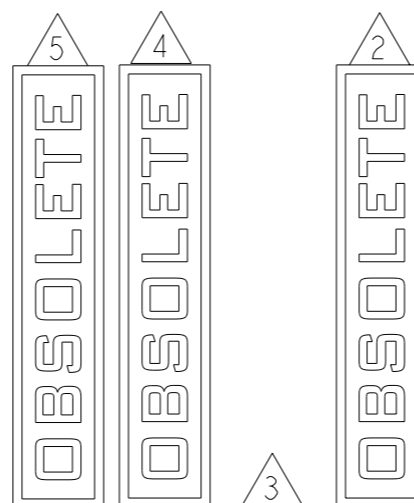
1. MANUFACTURER'S INSTRUCTION SHEETS.

2 INSTRUCTION SHEETS 408-4020, 408-8925 AND 408-10103 EXPLAIN THE LightCrimp Plus LC TERMINATION TECHNIQUE AND ARE AVAILABLE FOR DOWNLOAD AT www.tycoelectronics.com/documents OR www.ampnetconnect.com/foguide.

3 INSTRUCTION SHEETS 408-4020, 408-8925 AND 408-4471 EXPLAIN THE LightCrimp Plus LC AND SC TERMINATION TECHNIQUE AND ARE AVAILABLE FOR DOWNLOAD AT www.tycoelectronics.com/documents OR www.ampnetconnect.com/foguide.

4 INSTRUCTION SHEETS 408-4020, 408-4471 EXPLAIN THE LightCrimp Plus SC TERMINATION TECHNIQUE AND ARE AVAILABLE FOR DOWNLOAD AT www.tycoelectronics.com/documents OR www.ampnetconnect.com/foguide.

5 INSTRUCTION SHEETS 408-4020, 408-4457 EXPLAIN THE LightCrimp Plus ST TERMINATION TECHNIQUE AND ARE AVAILABLE FOR DOWNLOAD AT www.tycoelectronics.com/documents OR www.ampnetconnect.com/foguide.



1	-	-	-	492703-1	CABLE HOLDER, LightCrimp Plus ST	9
1	-	-	-	492622-1	DIESET, LightCrimp Plus ST	8
-	1	-	-	1278023-1	CABLE HOLDER, LightCrimp Plus SC	7
-	1	-	-	492783-1	DIESET, LightCrimp Plus SC	6
-	-	-	1	1278625-1	CABLE CLAMP	5
-	-	-	1	2064453-2	CABLE SLITTER, 2mm	4
2	2	2	2	1278422-1	OPEN END WRENCH, 1/4IN.	3
-	-	1	1	2064540-1	CABLE HOLDER, LightCrimp Plus LC/SC	2
-	-	1	1	1985766-1	DIESET, LightCrimp Plus LC/SC/SPLICE	1
-4	-3	-2	-1	PART NUMBER	DESCRIPTION	ITEM NO.

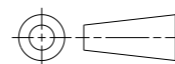
THIS DRAWING IS A CONTROLLED DOCUMENT.

DWN B. BRIGGS 08DEC2006
 CHK D. KIRSCH 08DEC2006
 APVD S. BUCHTER 08DEC2006

STE TE Connectivity

DIMENSIONS:

mm



TOLERANCES UNLESS OTHERWISE SPECIFIED:

0 PLC ±
 1 PLC ±
 2 PLC ±
 3 PLC ±
 4 PLC ±
 ANGLES ±

MATERIAL

FINISH

PRODUCT SPEC

APPLICATION SPEC

WEIGHT

NAME
 UPGRADE TERMINATION KIT,
 LightCrimp Plus LC,
 SC AND ST

SIZE CAGE CODE DRAWING NO RESTRICTED TO

A3 00779 C-1754847

CUSTOMER DRAWING

SCALE NTS SHEET 1 OF 1 REV E