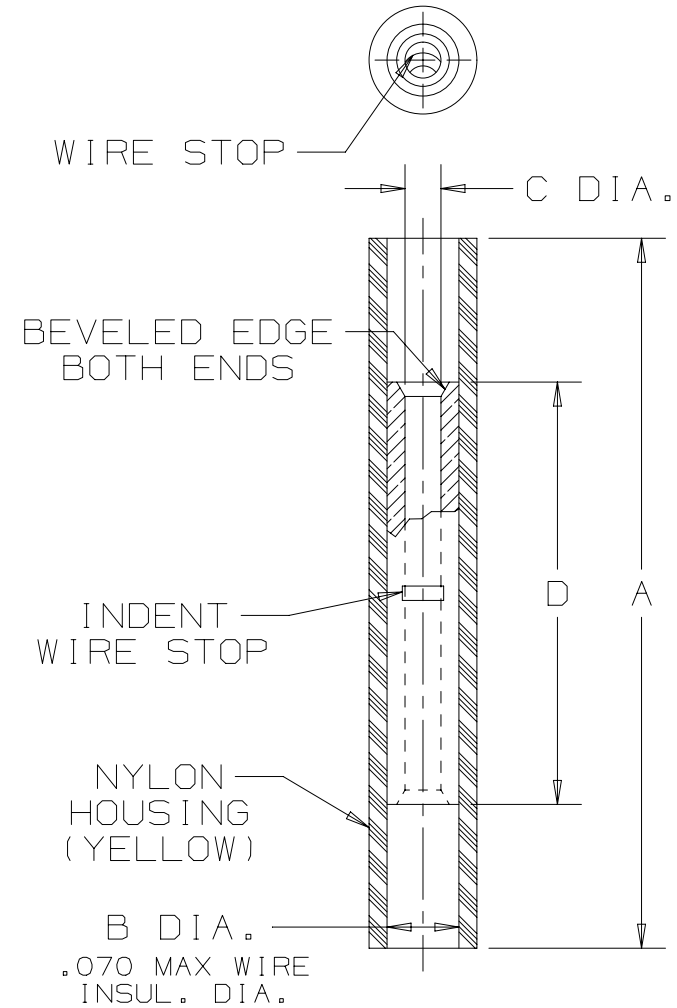


THIS COPY IS PROVIDED ON A RESTRICTED BASIS AND IS NOT TO BE USED IN ANY WAY DETRIMENTAL TO THE INTERESTS OF PANDUIT CORP.

PANDUIT PART #	WIRE SIZE AWG	DIMENSIONS - in [mm]			
		A ± .03 [0,8]	B ± .01 [0,3]	C ± .01 [0,3]	D ± .03 [0,8]
BSN22	26-22	.79 [20,1]	.08 [2,0]	.04 [1,0]	.47 [11,9]

INSTALLATION TOOLS
CT-520
CT-1525 (A POCKET)
CT-2500 (CT-2525CH: A PKT)



NOTES:

- RECOMMENDED FOR:
  - A. #26-22 AWG SOLID OR STRANDED COPPER WIRE
  - B. 221°F [105°C] MAX TEMP. RATING
  - C. 600V MAX VOLTAGE RATING
- MATERIAL:
  - A. STAMPING: .02" [0,5] THK COPPER, TIN PLATED
  - B. HOUSING: NYLON, YELLOW
- SEE [www.panduit.com](http://www.panduit.com) FOR PACKAGE QUANTITIES
- DIMENSIONS IN BRACKETS ARE IN MILLIMETERS
- WIRE STRIP LENGTH:  $1/4" \begin{matrix} +1/32 \\ -0 \end{matrix}$  [6,4mm  $\begin{matrix} +0,8 \\ -0 \end{matrix}$ ]

TITLE		<b>BUTT SPLICE, NYLON INSULATED #26-22 AWG</b>	
		CONTROL DRAWING	
ITEM REVISION NAME		N41337BA/08	
DATASET FILE NAME		N41337BA_DC/08	
UNLESS OTHERWISE SPECIFIED, DIMENSIONAL TOLERANCES ARE: IN [mm]		<b>PANDUIT</b>  MATERIAL:  SEE NOTES	
.x ± .1 [ 2.54 ]      .xxx ± .005 [ .127 ] .xx ± .01 [ .25 ]      ANGLES ± 5 °			
DRAWN BY		DRAWING NUMBER:	
DAW		A41337	
DATE		SHT 1 OF 1	
-		A	
CHK		SCALE	
-		NONE	
THIRD ANGLE PROJECTION			

REV	DATE	BY	CHK	APR	DESCRIPTION	ECN
08	4-27-15	JHNU	TMR	RGB	ADDED A POCKET NOTE, MAX INSUL DIA AND 600V RATING	A41337
07	04-25-13	JBN	RTFI	RTFI	UPDATED DRAWING BORDER & TITLE BLOCK	A41337

D10100DA/16