

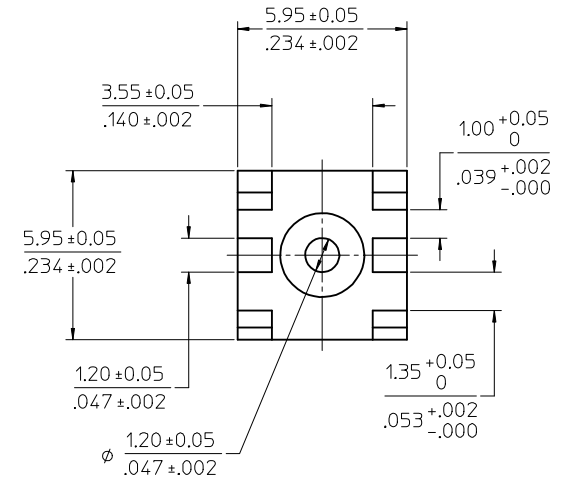
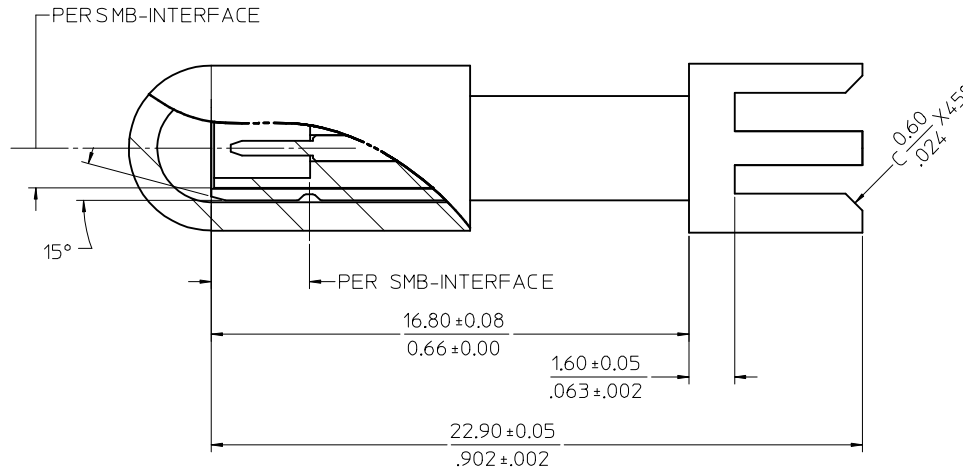
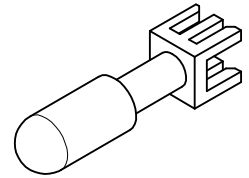
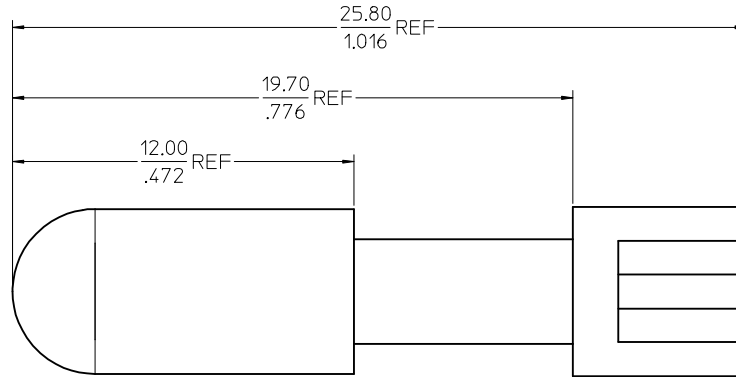
MATERIALS AND FINISHES

BODY : BRASS  
PLATED GOLD

CENTER CONTACT :  
PHOSPHOR BRONZE/BRASS  
PLATED GOLD

INSULATOR : TEFLON

DUST COVER : PVC / BLK



|                   |                       |
|-------------------|-----------------------|
| ES-73599-0000-013 | INTERFACE DIMENSION   |
| PS-73598-0099     | PRODUCT SPECIFICATION |
| SPECIFICATION     | DESCRIPTION           |

|   |            |                    |
|---|------------|--------------------|
| 2 | 73396-0261 | WITHOUT DUST COVER |
| 1 | 73396-0260 | WITH DUST COVER    |
|   | PART       | DESCRIPTION        |

|     |                     |                               |  |                          |  |                    |   |
|-----|---------------------|-------------------------------|--|--------------------------|--|--------------------|---|
| REV | ADD P/N: 73396-0261 | QUALITY SYMBOLS<br>▽=0<br>▽=0 | GENERAL TOLERANCES (UNLESS SPECIFIED)<br>4 PLACES ± .005 ± .005<br>3 PLACES ± .005 ± .005<br>2 PLACES ± 0.13 ± .005<br>1 PLACE ± 0.25 ± .005<br>ANGULAR ± 2° | DIMENSION STYLE<br>MM/IN | DRAWN BY<br>DARRY<br>DATE<br>2003/07/01  | DATE<br>2006/04/11 | TITLE<br>SMB JACK 50 OHM<br>EDGE MOUNT BULKHEAD<br>SMB-J/PCB/BK |
|     | EC NO: URF2006-0425 |                               |  |                          |  |                    |   |
| D1  |                     |                               | DRAFT WHERE APPLICABLE<br>MUST REMAIN<br>WITHIN DIMENSIONS   | SIZE<br>A2               | THIS DRAWING CONTAINS INFORMATION THAT IS PROPRIETARY TO MOLEX<br>INCORPORATED AND SHOULD NOT BE USED WITHOUT WRITTEN PERMISSION |                    |   |