

PART NUMBER	REV	TERMINATOR	FEED TYPE	DESCRIPTION
1529252-1	B	BENCH & LEADMAKER	MECH POST FEED	HDI APPLICATOR
7-1529252-1	B	BENCH & LEADMAKER	MECH POST FEED	-1 AND SPARE PARTS
7-1529252-7	A	-	-	SPARE PARTS KIT

LOC	DIST	REV	DATE	BY	APPD
A	66		21SEP2007	DP	MC
B			30APR2010	MY	GB

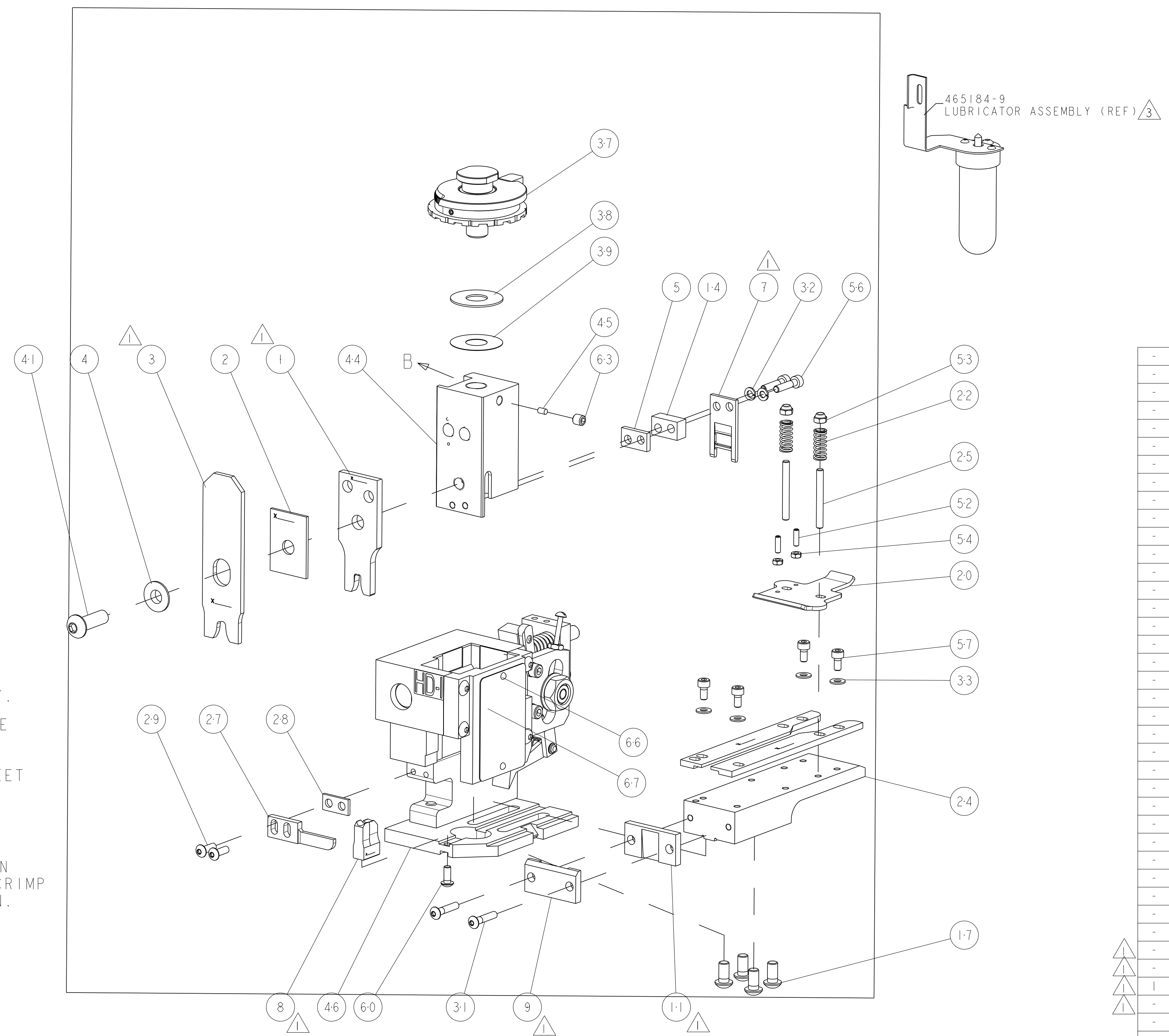
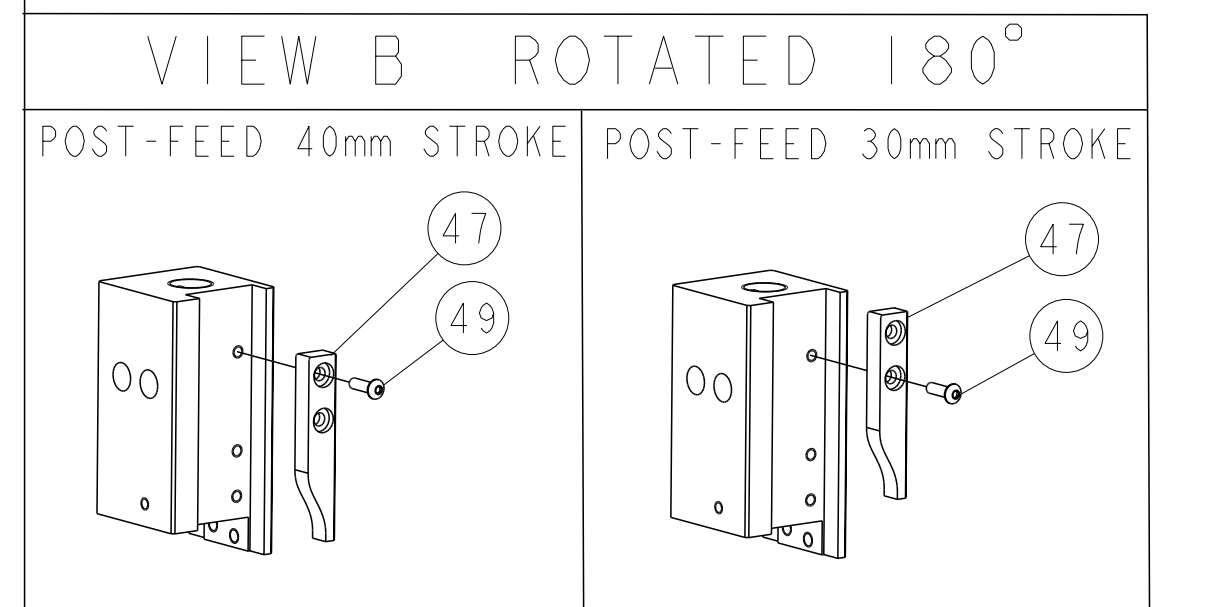
CRIMP DATA	TE TERMINAL	TE CRIMP SPECS
TERMINAL NAME: RING TONGUE		
CRIMP	SIZE	TYPE
WIRE	4.57 [1.80 IN]	F
INSUL	6.35 [1.25 IN]	OV
RANGE		
3.50-6.00mm ² or 12-10 AWG		
3.30-4.70 [1.130-.185 IN]		
WIRE STRIP LENGTH		
5.18-5.94 [1.204-.234 IN]		
APPL INSTRUCTIONS		
408-8323 & 408-8490		
TERMINAL	114-2084	FEED
APPL SPEC	114-3118	27.85 [1.096 IN]

TERMINALS APPLIED
160092
160181
160335
160336
160411

WIRE SIZE	CRIMP HEIGHT	REF SETTING
6.00mm ²	3.10 ±0.05 [1.122 ±.002 IN]	B1
4.00mm ²	2.95 ±0.05 [1.116 ±.002 IN]	C0
3.50mm ²	2.84 ±0.05 [1.112 ±.002 IN]	C7
12 AWG	2.77 ±0.05 [1.109 ±.002 IN]	D4

- 1 RECOMMENDED SPARE PARTS
- 2. GREASE RAM, CAM, CAM FOLLOWER AND FEED ROD LIGHTLY.
- 3 CERTAIN TERMINALS REQUIRE LUBRICATION. REFER TO THE APPLICATOR INSTRUCTION SHEET FOR MORE INFORMATION.
- 4. LUBRICATE DAILY PER THE APPLICATOR INSTRUCTION SHEET SUPPLIED WITH THE APPLICATOR.
- 5 REFER TO APPLICATION SPECIFICATION TEC-114-3118 FOR TENSILE VALUES.
- 6 INSULATION CRIMP FORM MAY NOT CONFORM TO THAT SHOWN IN APPLICATION SPECIFICATION. OVERLAP INSULATION CRIMP FORM REQUESTED FOR A SPECIFIC CUSTOMER APPLICATION.

*** WARNING**
 ON INSTALLATION, SET WIRE DISC TO LARGEST WIRE SIZE SETTING. USE OF SETTINGS BELOW MIN. REQUIRED CRIMP HEIGHT SETTING WILL CAUSE DAMAGE TO CRIMP TOOLING.



QTY	DESCRIPTION	ITEM NO
-	1338705-4 DOCUMENTATION PACKAGE	71
-	461264-5 PLATE, IDENTIFICATION	67
-	21017-2 SCREW, DRIVE	66
-	3-18031-0 SCR, SET, CUP POINT M6 X 6.0	63
-	18024-7 SCR, BTN SKT HD CAP (M4 X 10.0)	60
-	1-18023-0 SCR, SKT HD CAP M4 X 8.0	57
-	1-994962-6 SCR, SKT HD CAP M4 X 18.0	56
-	18029-1 NUT, HEX, REG M3	54
-	986965-1 NUT, LOCK, HEX, TORQUE (M4)	53
-	2-18032-2 SCR, SET, FLT POINT M3 X 10.0	52
-	18024-3 SCR, BTN SKT HD CAP (M3 X 10.0)	49
-	1338676-1 CAM, UNIVERSAL POST-FEED	47
-	1338662-2 SUB ASSY, APPLICATOR FRAME	46
-	690191-1 PLUG, NYLON	45
-	1333260-1 RAM	44
-	2-18024-6 SCR, BTN SKT HD CAP (M8 X 25.0)	41
-	690125-1 SHIM SUB-ASSY	39
-	469367-7 SHIM	38
-	879103-2 FINE ADJUST HEAD ASSEMBLY	37
-	18027-2 WASHER, FLAT, REG M4	33
-	18025-2 WASHER, SPRG LOCK, REG M4	32
-	1-18024-0 SCR, BTN SKT HD CAP (M4 X 20.0)	31
-	18024-8 SCR, BTN SKT HD CAP (M4 X 12.0)	29
-	3-690451-2 SPACER, STRIPPER	28
-	240639-1 STRIPPER (MACHINING)	27
-	1320906-1 STUD, THREADED	25
-	1320995-1 PLATE, STRIP GUIDE	24
-	4-22281-1 SPRING, DRAG	22
-	1338665-1 DRAG	20
-	2-458030-2 STRIP GUIDE, REAR	19
-	2-458031-2 STRIP GUIDE, FRONT	18
-	1-18024-8 SCR, BTN SKT HD CAP (M6 X 12.0)	17
-	7-240641-2 SPACER	14
-	240644-1 PLATE, REAR SHEAR	11
-	690496-4 PLATE, FRONT SHEAR	9
-	2-1633383-6 ANVIL, COMBINATION	8
-	2-690474-8 BLADE, SLUG	7
-	-	6
-	240641-5 SPACER	5
-	238009-1 BLOCK, FL CRIMPER SPACER	4
-	1633569-6 CRIMPER, INSULATION OVERLAP	3
-	1-455888-5 SPACER, CRIMPER	2
-	2-456412-0 CRIMPER, WIRE .180 F PREMIUM	1

DIMENSIONS: INCHES 9 PLC ±.01 1 PLC ±.01 2 PLC ±.01 3 PLC ±.01 4 PLC ±.0001 ANGLES ±.0001 FINISH	TOLERANCES UNLESS OTHERWISE SPECIFIED: ±.01 ±.01 ±.01 ±.01 ±.0001 ±.01	DWN L LOFTHOUSE CHK M CLIFFORD APVD M CLIFFORD PRODUCT SPEC APPLICATION SPEC WEIGHT CUSTOMER DRAWING	18JUL2007 18JUL2007 NAME FINE ADJUST END FEED HDI APPLICATOR SIZE CAGE CODE DRAWING NO A1 00779 C=1529252 SCALE 3:5 SHEET 1 OF 1 REV B	Tyco Electronics Harrisburg, PA 17105-3608
---	--	--	--	---