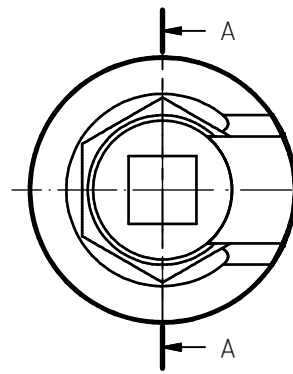
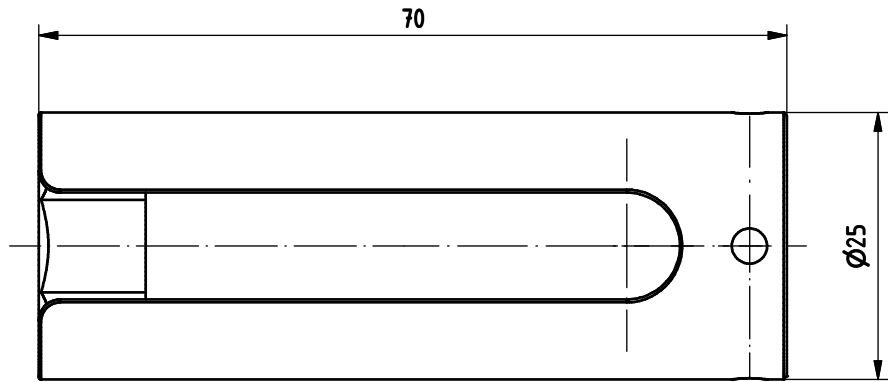
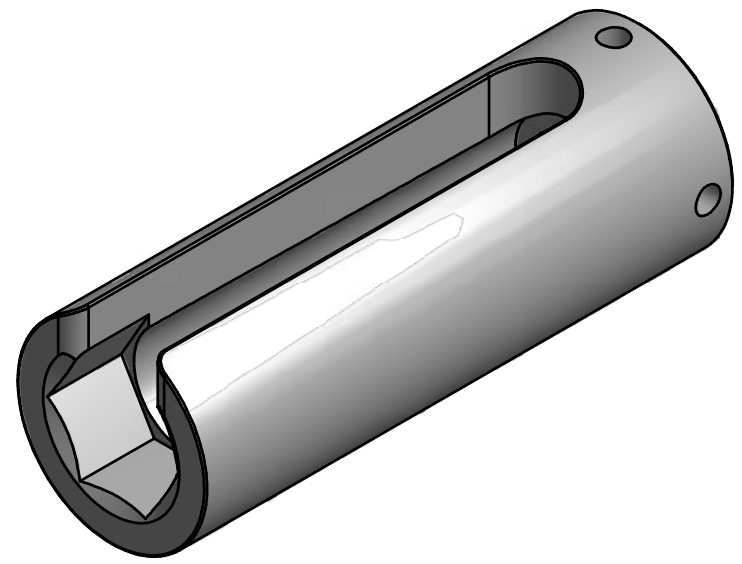
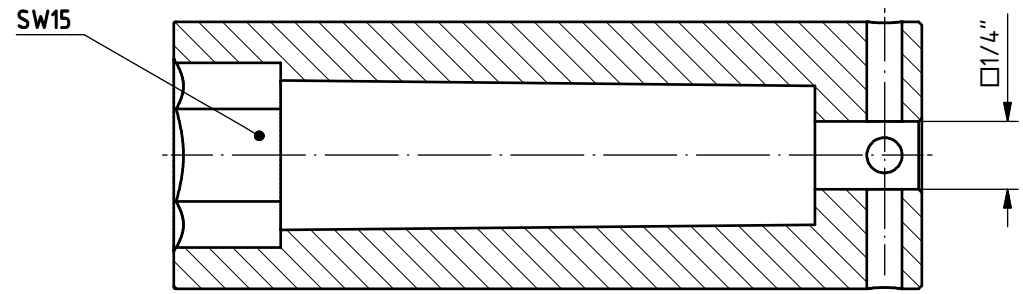


LOC	DIST	REVISIONS					
AI	00	P	LTR	DESCRIPTION	DATE	DWN	APVD
		A2		INITIAL REVISION	20JUL15	LS	LB



A-A



USED FOR:
 SERVICE KIT, SOLARLOK PV4 CONNECTOR
 TE PN 7-1579010-4

USED WITH (separate to order):
 Torque wrench, 1.8 Nm
 TE PN 2161345-1

THIS DRAWING IS A CONTROLLED DOCUMENT.		DWN	L. Sandhu	20 JUL 2015	TE Connectivity	NAME		HEXAGON SPANNER HEAD, WRENCH SIZE 15		
DIMENSIONS: mm		CHK	L. Bauer	20 JUL 2015		PRODUCT SPEC		Sechskantnuss, SW15		
TOLERANCES UNLESS OTHERWISE SPECIFIED: 0 PLC ± 1 PLC ± 2 PLC ± 3 PLC ± 4 PLC ± ANGLES ±		APVD	L. Bauer	20 JUL 2015		APPLICATION SPEC		SIZE	A3	
MATERIAL		Gewicht / Weight in Kg		0,021 kg		CAGE CODE	00779	DRAWING NO	523229-4	RESTRICTED TO
FINISH		CUSTOMER DRAWING			SCALE	2:1	SHEET	1 OF 1	REV	A2