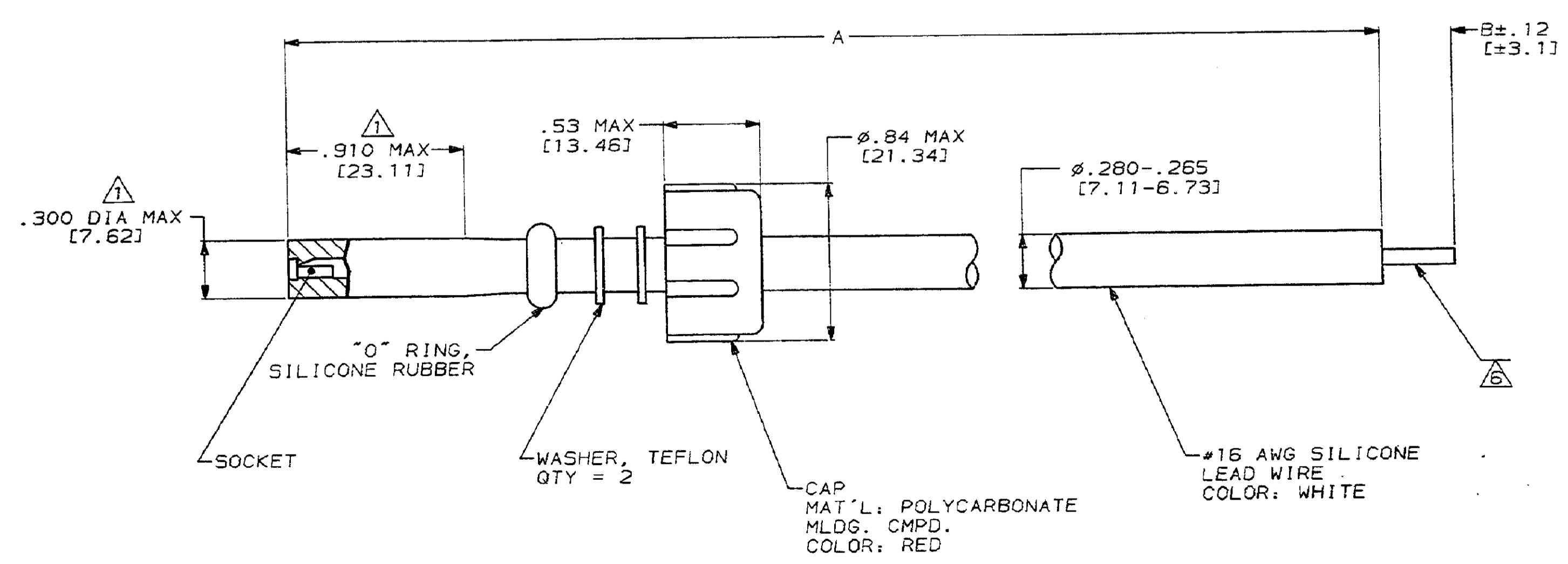


PROD		LOC		DIST		REVISONS	
4088	DF	SO	P	F	ZONE	LTR	DATE
					AB	REDWN & REV PER DF-2034	CT 1-90
					AC	REACTIVATE 1--7; DF-4300	CT 1-91

PART NO.	A	B Δ	
832692-1	11.38±.12 [289.1±3.1]	.38 [9.7]	
832692-2	24.00±.24 [609.6±3.1]	-	
832692-3	15.00±.12 [381.0±3.1]	-	
832692-4	13.12±.12 [333.2±3.1]	.25 [6.4]	
832692-5	36.00±.36 [914.4±9.1]	-	
832692-6	8.50±.12 [215.9±3.1]	.38 [9.7]	
832692-7	10.25±.12 [260.4±3.1]	-	
832692-8	11.00±.12 [279.4±3.1]	-	
832692-9	60.00±.60 [1524.0±15.2]	-	
1-832692-0	20.00±.12 [508.0±3.1]	.38 [9.7]	
1-832692-1	12.88±.12 [327.1±3.1]	.25 [6.4]	OBSOLETE
1-832692-2	13.62±.12 [345.9±3.1]	-	OBSOLETE
1-832692-3	7.00±.12 [177.8±3.1]	.38 [9.7]	
1-832692-4	24.00±.24 [609.6±3.1]	.38 [9.7]	
1-832692-5	132.00±1.32 [3352.8±33.5]	-	OBSOLETE
1-832692-6	9.50±.12 [241.3±3.1]	-	OBSOLETE
1-832692-7	192.00±1.92 [4876.8±48.8]	-	
1-832692-8	30.00±.30 [762.0±3.1]	-	OBSOLETE
1-832692-9	18.00±.12 [457.2±3.1]	-	
2-832692-0	6.00±.12 [152.4±3.1]	.38 [9.7]	
2-832692-1	5.00±.12 [127.0±3.1]	.38 [9.7]	
2-832692-2	12.00±.12 [304.8±3.1]	.38 [9.7]	
2-832692-3	10.00±.12 [254.0±3.1]	-	OBSOLETE
2-832692-4	12.00±.12 [304.8±3.1]	-	
2-832692-5	14.00±.12 [355.6±3.1]	-	OBSOLETE
2-832692-6	22.00±.12 [558.8±3.1]	-	OBSOLETE
2-832692-7	23.00±.12 [584.2±3.1]	-	OBSOLETE
2-832692-8	24.00±.24 [609.6±3.1]	-	OBSOLETE
2-832692-9	7.75±.12 [196.9±3.1]	-	OBSOLETE
3-832692-0	72.00±.72 [1828.8±18.2]	-	
3-832692-1	48.00±.48 [1219.2±12.2]	-	
3-832692-2	9.25±.12 [235.0±3.1]	.50 [12.7]	OBSOLETE
3-832692-3	26.50±.26 [673.1±6.7]	.75 [19.1]	OBSOLETE
3-832692-4	7.75±.12 [196.9±3.1]	.75 [19.1]	OBSOLETE
3-832692-5	12.38±.12 [314.5±3.1]	.75 [19.1]	OBSOLETE
3-832692-6	10.62±.12 [269.7±3.1]	.75 [19.1]	OBSOLETE
3-832692-7	21.75±.12 [552.5±3.1]	.75 [19.1]	OBSOLETE
3-832692-8	21.38±.12 [543.1±3.1]	.75 [19.1]	OBSOLETE
3-832692-9	9.00±.12 [228.6±3.1]	.75 [19.1]	OBSOLETE
4-832692-0	6.62±.12 [168.1±3.1]	.25 [6.4]	OBSOLETE
4-832692-1	13.50±.12 [342.9±3.1]	.75 [19.1]	OBSOLETE
4-832692-2	19.00±.12 [482.6±3.1]	-	OBSOLETE
4-832692-3	12.62±.12 [320.5±3.1]	.75 [19.1]	OBSOLETE
4-832692-4	9.00±.12 [228.6±3.1]	.38 [9.7]	
4-832692-5	10.00±.12 [254.0±3.1]	.38 [9.7]	
4-832692-6	14.00±.12 [355.6±3.1]	.38 [9.7]	OBSOLETE
4-832692-7	15.00±.12 [381.0±3.1]	.38 [9.7]	
4-832692-8	120.00±1.20 [3048.0±30.5]	-	
4-832692-9	10.25±.12 [260.4±3.1]	.12 [3.0]	
5-832692-0	11.62±.12 [295.1±3.1]	.75 [19.1]	OBSOLETE

PART NO.	A	B Δ	
5-832692-1	300.00±3.00 [7620.0±76.2]	.38 [9.7]	
5-832692-2	192.00±1.92 [4876.8±48.8]	.38 [9.7]	OBSOLETE
5-832692-3	30.00±.30 [762.0±3.1]	.38 [9.7]	OBSOLETE
5-832692-4	11.00±.12 [279.4±3.1]	.38 [9.7]	OBSOLETE
5-832692-5	24.62±.24 [625.3±6.3]	.75 [19.1]	OBSOLETE
5-832692-6	12.62±.12 [320.5±3.1]	.75 [19.1]	OBSOLETE
5-832692-7	25.62±.25 [650.7±6.5]	.75 [19.1]	OBSOLETE
5-832692-8	25.75±.25 [651.1±6.5]	.75 [19.1]	OBSOLETE
5-832692-9	13.00±.12 [330.2±3.1]	.38 [9.7]	OBSOLETE
6-832692-0	11.75±.12 [298.5±3.1]	.25 [6.4]	OBSOLETE
6-832692-1	7.75±.12 [196.9±3.1]	.38 [9.7]	OBSOLETE
6-832692-2	8.00±.12 [203.2±3.1]	.38 [9.7]	
6-832692-3	11.50±.12 [292.1±3.1]	.38 [9.7]	OBSOLETE
6-832692-4	13.50±.12 [342.9±3.1]	.38 [9.7]	OBSOLETE
6-832692-5	15.00±.12 [381.0±3.1]	.38 [9.7]	OBSOLETE
6-832692-6	17.00±.12 [431.8±3.1]	.38 [9.7]	OBSOLETE
6-832692-7	25.00±.25 [635.0±6.4]	.38 [9.7]	
6-832692-8	84.00±.84 [2133.6±21.3]	.38 [9.7]	
6-832692-9	36.00±.36 [914.4±9.1]	.38 [9.7]	
7-832692-0	10.00±.12 [254.0±3.1]	.38 [9.7]	OBSOLETE
7-832692-1	240.00±2.40 [6096.0±60.7]	.38 [9.7]	OBSOLETE
7-832692-2	7.12±.12 [180.8±3.1]	.38 [9.7]	OBSOLETE
7-832692-3	26.00±.26 [660.4±6.6]	-	OBSOLETE
7-832692-4	13.00±.12 [330.2±3.1]	-	OBSOLETE
7-832692-5	39.00±.39 [990.6±9.9]	.38 [9.7]	
7-832692-6	48.00±.48 [1219.2±12.2]	.38 [9.7]	OBSOLETE
7-832692-7	22.00±.12 [558.8±3.1]	.38 [9.7]	OBSOLETE
7-832692-8	21.00±.12 [533.4±3.1]	.38 [9.7]	OBSOLETE
7-832692-9	18.00±.12 [457.2±3.1]	.38 [9.7]	
8-832692-0	17.25±.12 [438.2±3.1]	.38 [9.7]	
8-832692-1	12.25±.12 [311.2±3.1]	-	OBSOLETE
8-832692-2	11.25±.12 [285.8±3.1]	-	OBSOLETE
8-832692-3	3.50±.12 [88.9±3.1]	-	OBSOLETE
8-832692-4	7.00±.12 [177.8±3.1]	-	OBSOLETE
8-832692-5	13.12±.12 [333.2±3.1]	.38 [9.7]	OBSOLETE
8-832692-6	10.25±.12 [260.4±3.1]	.25 [6.4]	OBSOLETE
8-832692-7	10.75±.12 [273.1±3.1]	.25 [6.4]	OBSOLETE
8-832692-8	8.50±.12 [215.9±3.1]	-	OBSOLETE
8-832692-9	144.00±1.44 [3657.6±36.6]	-	
9-832692-0	42.00±.42 [1066.8±10.7]	-	OBSOLETE
9-832692-1	6.56±.12 [166.6±3.1]	.38 [9.7]	OBSOLETE
9-832692-2	5.00±.12 [127.0±3.1]	.50 [12.7]	OBSOLETE
9-832692-3	50.00±.50 [1270.0±12.7]	.38 [9.7]	OBSOLETE
9-832692-4	600.00±6.00 [15240.0±152.4]	-	OBSOLETE
9-832692-5	54.00±.54 [1371.6±13.7]	.38 [9.7]	OBSOLETE
9-832692-6	3.00±.12 [76.2±3.1]	-	OBSOLETE
9-832692-7	4.00±.12 [101.6±3.1]	-	OBSOLETE
9-832692-8	76.00±.76 [1930.4±19.3]	-	OBSOLETE
9-832692-9	40.00±.40 [1016.0±10.2]	-	

- Δ .300 MAX DIMENSION HELD OVER THE .910 MAX AREA ONLY.
- MARKED PER MIL-STD-130.
- OPERATING VOLTAGE: 25 KVDC AT 0 TO 70,000 FEET, -55°C TO 125°C.
- SEE AMP DWG. 840443 & 860345 FOR ADDITIONAL LENGTHS.
- LEADS WILL MATE WITH AMP LGH-1 OR 1L RECEPTACLES.
- Δ WHERE APPLICABLE "B" STRIP LENGTH IS SOLDER DIPPED.



DO NOT SCALE PRINT. UNLESS SPECIFIED DIMENSIONS IN INCHES [mm]	DR 9-7-89 C.C. THOMAS	AMP AMP INCORPORATED Harrisburg, Pa. 17105
TOLERANCES ON: 2 PLC DEC ± - 3 PLC DEC ± - ANGLES ± -	CHK 1-5-90 S. GLADFELTER	
MATERIAL	APPD 1-5-90 D. OPLINGER	NAME
SEE CALLOUTS	APPD 1-5-90 D. EARY	LEAD ASS'Y, LGH 1 & 1L, SINGLE END
FINISH	PRODUCT SPEC	SIZE
	APPLICATION SPEC	D 00779
	WEIGHT	DRAWING NO
		832692
		SCALE
		2:1
		SHEET
		1 OF 1

CUSTOMER DRAWING