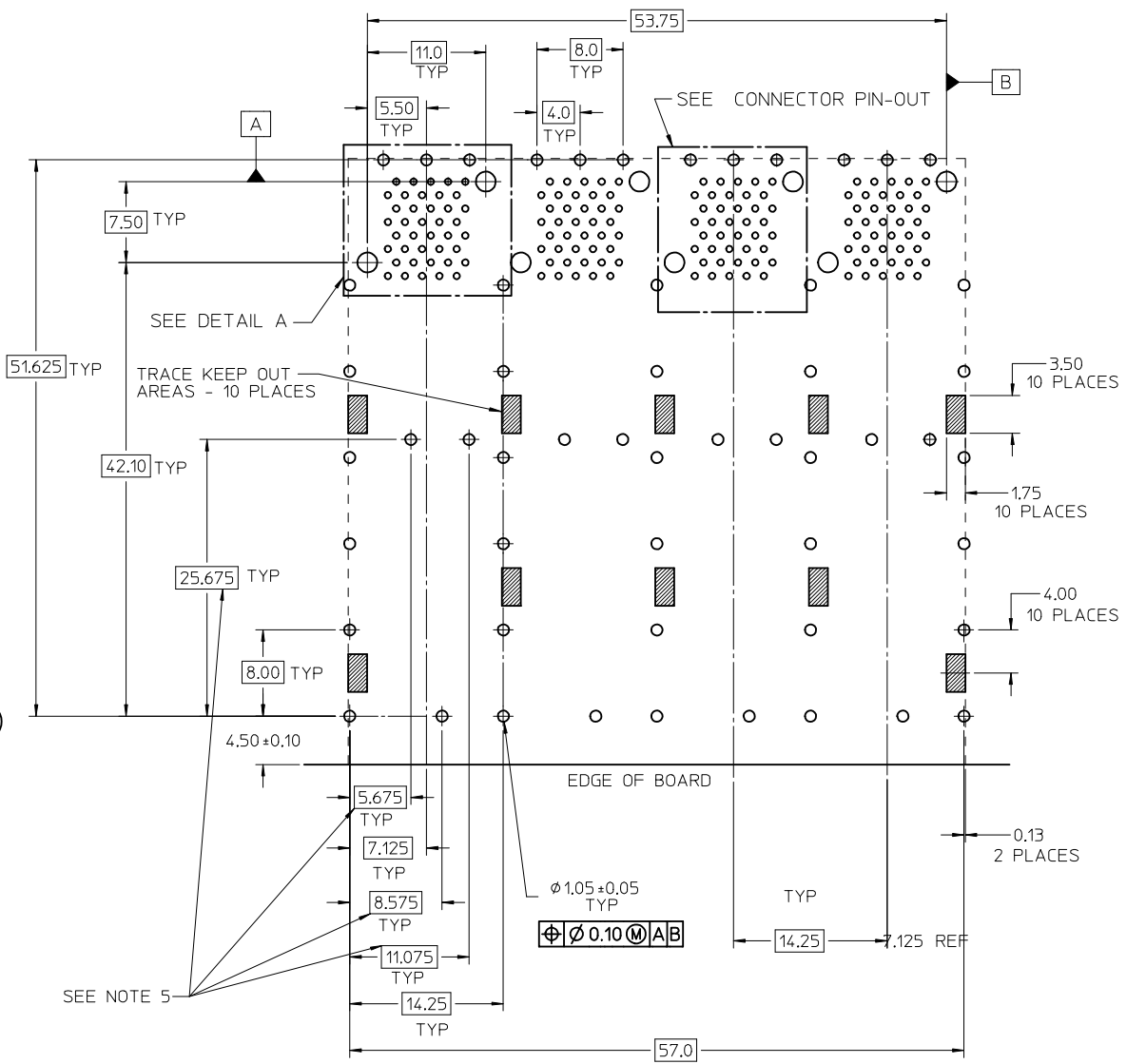
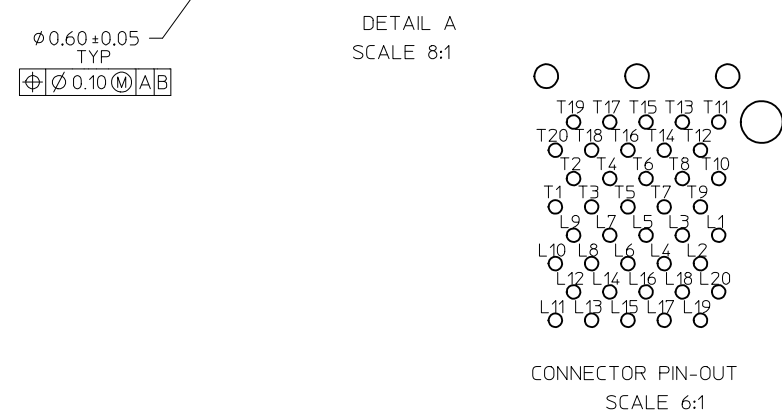
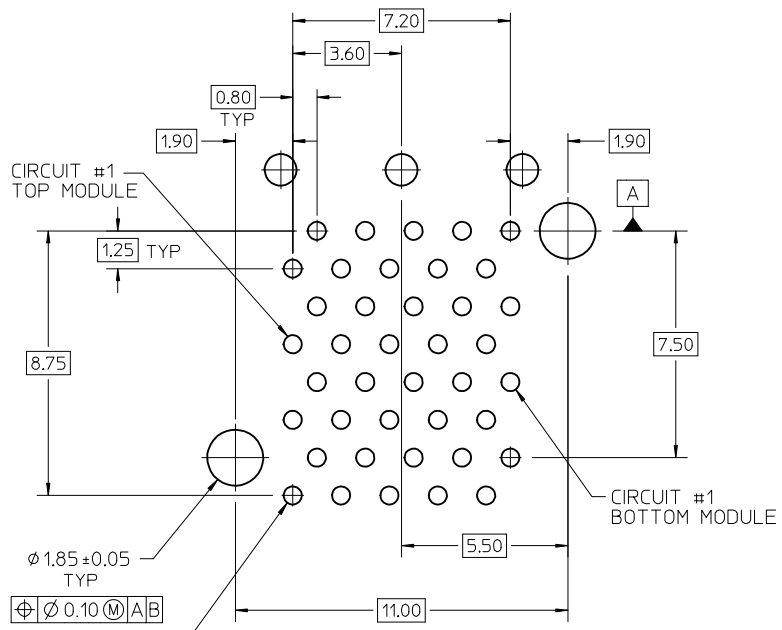


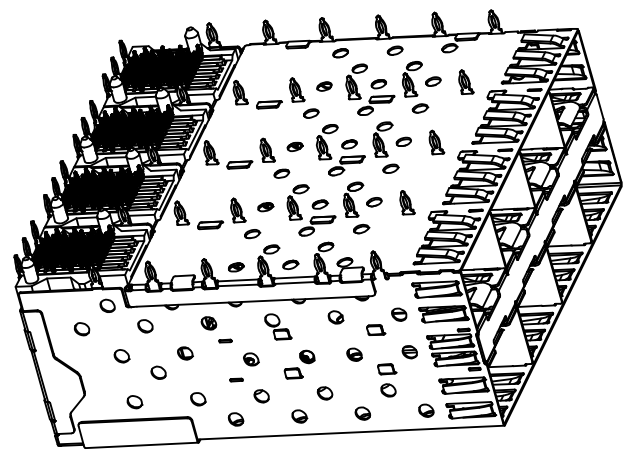
- NOTES
- MATERIAL:
    - CAGE: NICKEL SILVER; THICKNESS: 0.25mm.
    - CONNECTOR HOUSING: GLASS FILLED HIGH TEMP PLASTIC, 94 V-0
    - COLOR: BLACK.
    - OVERMOLDED TERMINAL ASSEMBLY: GLASS FILLED HIGH TEMP PLASTIC, 94 V-0, COLOR: BLACK
    - TERMINALS: TIN BRASS
  - FINISH:
    - TERMINALS:
      - CONTACT AREA: 0.76 MICROMETERS MINIMUM HARD GOLD
      - OVER 1.27 MICROMETERS MINIMUM NICKEL.
      - COMPLIANT TAIL - TIN/LEAD OPTION: 0.76 - 152 MICROMETERS 90/10 TIN/LEAD
      - OVER 0.76 - 152 MICROMETERS NICKEL
      - COMPLIANT TAIL - TIN OPTION: 0.76 - 152 MICROMETERS TIN
      - OVER 0.76 - 152 MICROMETERS NICKEL
  - REFER TO PRODUCT SPEC PS-75310-001 FOR ALL ELECTRICAL, MECHANICAL, AND ENVIRONMENTAL SPECIFICATIONS.
  - REFER TO PACKAGING SPEC PK-75450-001 FOR ALL PACKAGING SPECIFICATIONS.
  - THE CURVED TAILS THAT GO INTO THE HOLES LOCATED BY THESE DIMENSIONS ARE BEING ELIMINATED. TO ACCOMMODATE THIS CONVERSION, IT IS RECOMMENDED THAT BOARDS DESIGNED TO THIS PRINT REVISION INCLUDE THESE HOLES.
  - PART COMPLIES WITH COSMETIC SPECIFICATION PS-45499-002. SEE SHEET 3 SECTION Z-Z FOR SURFACE CLASSIFICATIONS. UNDERSIDE OF CAGE COMPLIES WITH CLASS 'C'.

754545001	TIN
754540001	TIN / LEAD
MATERIAL NO.	TERMINAL TAIL PLATING

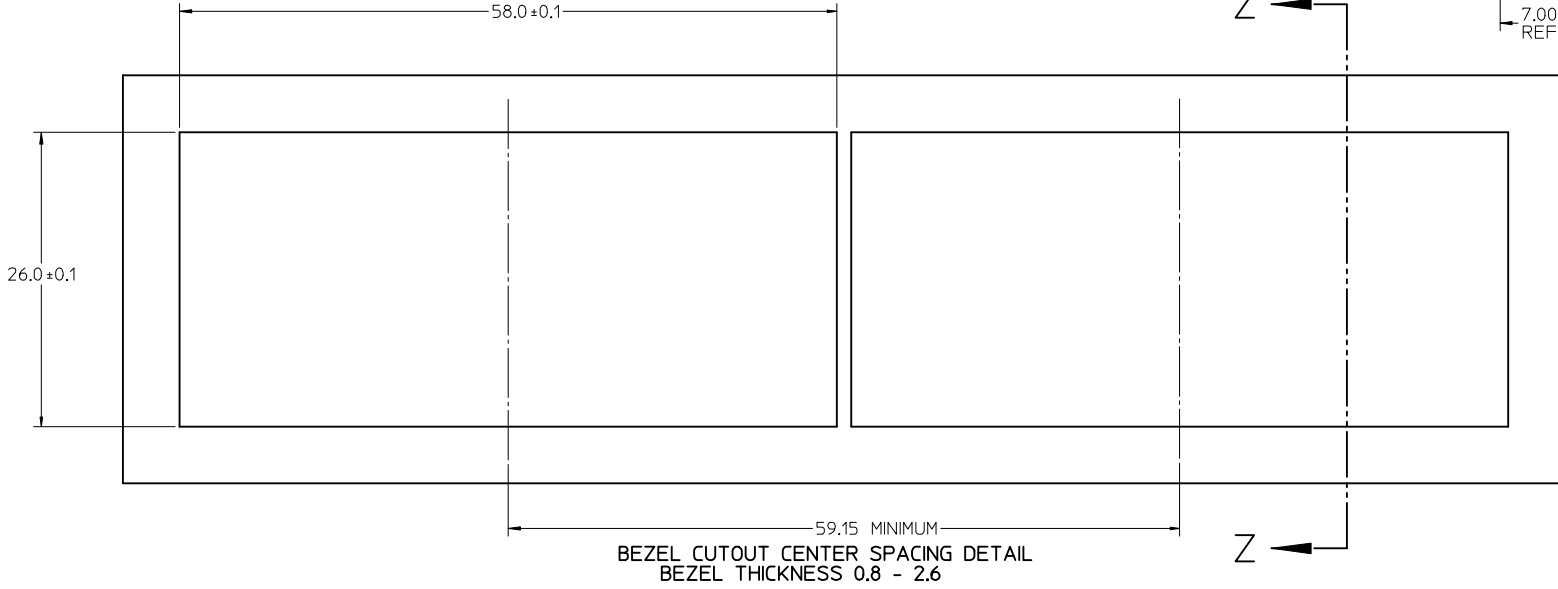
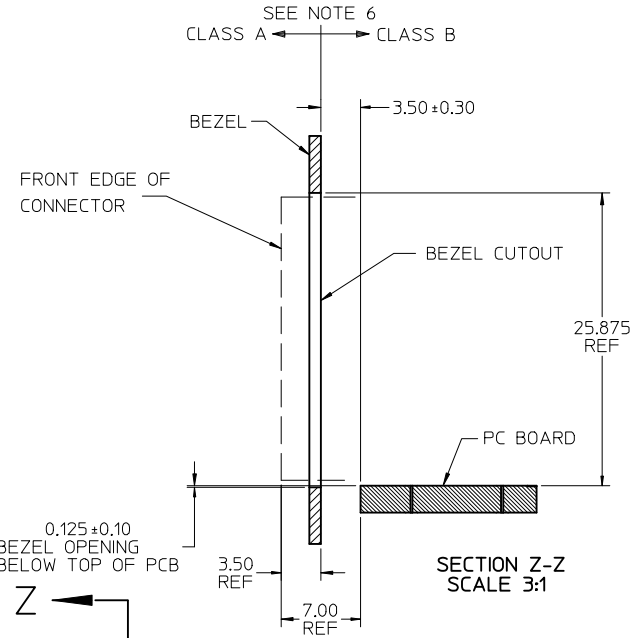
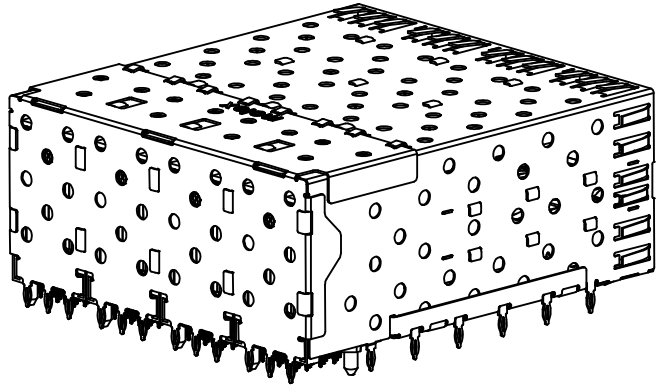
<b>CLARIFY VIEWS</b> EC NO: UCP2014-4884 TDR:WNR/HP/PLE 2014/05/21 CHKD:BB/BARKER 2014/05/21 APPR:SM/ILLER 2014/10/02	QUALITY SYMBOLS 	GENERAL TOLERANCES (UNLESS SPECIFIED)		DIMENSION STYLE <b>MM ONLY</b>		SCALE <b>3:1</b>	DESIGN UNITS <b>METRIC</b>	THIRD ANGLE PROJECTION		
		4 PLACES ± --- ± ---	3 PLACES ± --- ± ---	DRAWN BY JLONG	DATE 02-04-2004	TITLE <b>STACKED SFP 2X4 MEDIUM HEIGHT ASS'Y, PRESS-FIT TAIL WITHOUT LIGHT PIPES</b>				
		2 PLACES ± 0.13 ± ---	1 PLACE ± 0.25 ± ---	CHECKED BY KREGNIER	DATE 02-27-2004	DOCUMENT NO. <b>SD-75454-001</b>				
		0 PLACE ± ±	APPROVED BY KREGNIER	DATE 04-28-2004	SHEET NO. <b>1 OF 3</b>					
ANGULAR ± 5 °		MATERIAL NO. <b>SEE TABLE</b>		THIS DRAWING CONTAINS INFORMATION THAT IS PROPRIETARY TO MOLEX. INCORPORATED AND SHOULD NOT BE USED WITHOUT WRITTEN PERMISSION						



RECOMMENDED PCB LAYOUT - COMPONENT SIDE  
 RECOMMENDED PCB THICKNESS - 2.36 MM (.093 INCH)  
 THE ENTIRE AREA OF THE CONNECTOR FOOTPRINT  
 TO BE CONSIDERED THE KEEP OUT AREA FOR COMPONENTS  
 THIS AREA IS INDICATED BY THE DASHED LINE



SEE SHEET 1 EC NO: UCP2014-4684 T1 DRW:RMH/PPLE 2014/05/21 CHKD:BBARKER 2014/05/21 APPR:SWILLER 2014/10/02 REVISIONS	QUALITY SYMBOLS	GENERAL TOLERANCES (UNLESS SPECIFIED)	DIMENSION STYLE MM ONLY	SCALE 3:1	DESIGN UNITS METRIC	THIRD ANGLE PROJECTION
	▽=0	mm INCH	DRAWN BY DATE JLONG 02-04-2004	TITLE STACKED SFP 2X4 MEDIUM HEIGHT ASS'Y, PRESS-FIT TAIL WITHOUT LIGHT PIPES	<b>molex</b> DOCUMENT NO. SD-75454-001 SHEET NO. 2 OF 3	
	▽=0	4 PLACES ± --- ± --- 3 PLACES ± --- ± --- 2 PLACES ± 0.13 ± --- 1 PLACE ± 0.25 ± --- 0 PLACE ± ±	CHECKED BY DATE KREGNIER 02-27-2004			
	▽=0	ANGULAR ± 5 °	APPROVED BY DATE KREGNIER 04-28-2004	THIS DRAWING CONTAINS INFORMATION THAT IS PROPRIETARY TO MOLEX INCORPORATED AND SHOULD NOT BE USED WITHOUT WRITTEN PERMISSION		



BEZEL CUTOUT CENTER SPACING DETAIL  
BEZEL THICKNESS 0.8 - 2.6

SEE SHEET 1 EC NO: UCP2014-4884 TDR:RW/HP/PPLE 2014/05/21 CHKD:BBARKER 2014/05/21 APPR:SMILLER 2014/10/02	QUALITY SYMBOLS ▽=0 ▽=0 ▽=0	GENERAL TOLERANCES (UNLESS SPECIFIED)		DIMENSION STYLE <b>MM ONLY</b>		SCALE 3:1	DESIGN UNITS METRIC	THIRD ANGLE PROJECTION		
		4 PLACES ±	---	±	---	DRAWN BY JLONG	DATE 02-04-2004	TITLE STACKED SFP 2X4 MEDIUM HEIGHT ASS'Y, PRESS-FIT TAIL WITHOUT LIGHT PIPES  <b>molex</b> DOCUMENT NO. SD-75454-001 SHEET NO. 3 OF 3		
		3 PLACES ±	---	±	---	CHECKED BY KREGNIER	DATE 02-27-2004			
		2 PLACES ±	0.13	±	---	APPROVED BY KREGNIER	DATE 04-28-2004			
1 PLACE ±	0.25	±	---	MATERIAL NO. SEE SHEET 1						
0 PLACE ±		±		ANGULAR ± 5 °		DRAFT WHERE APPLICABLE MUST REMAIN WITHIN DIMENSIONS				