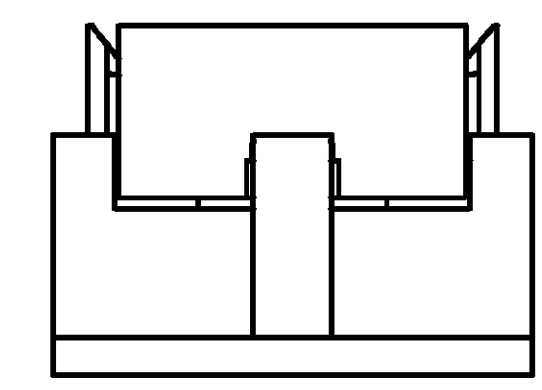
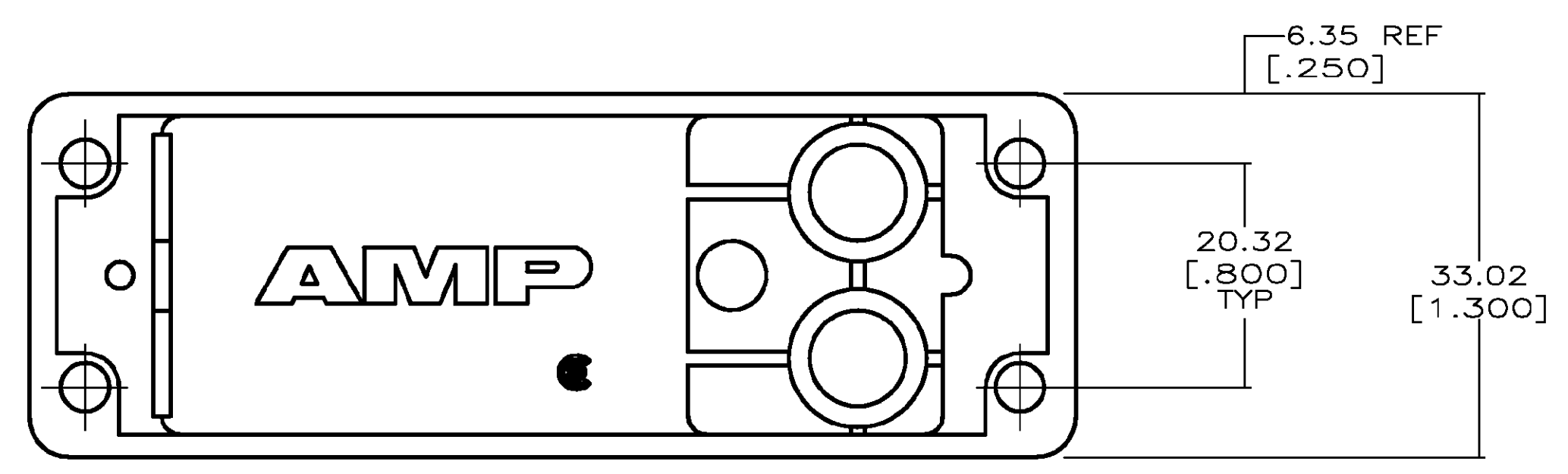
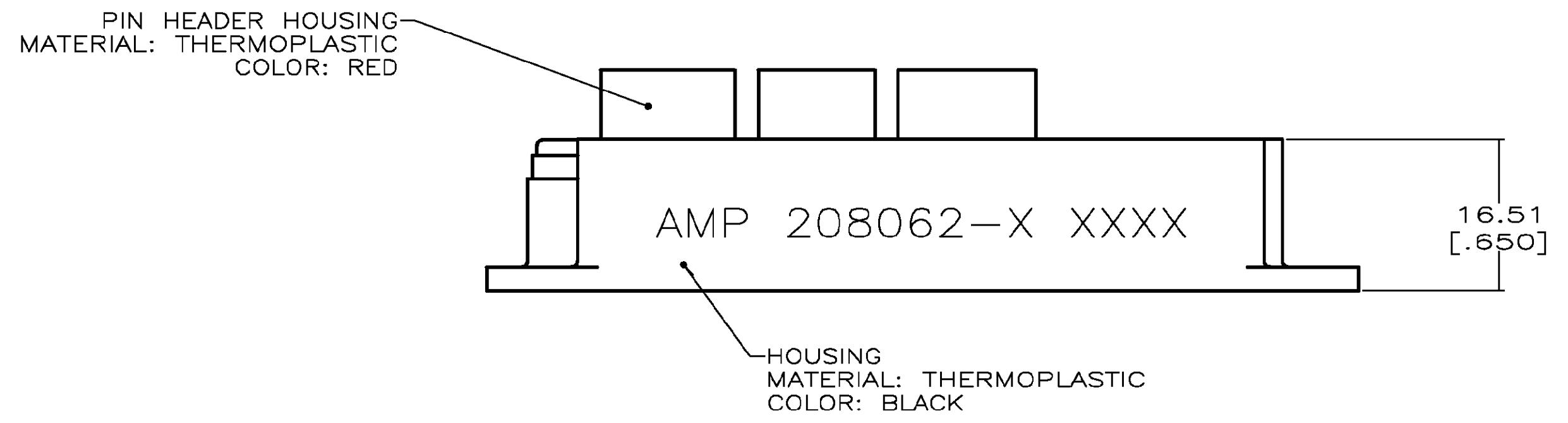
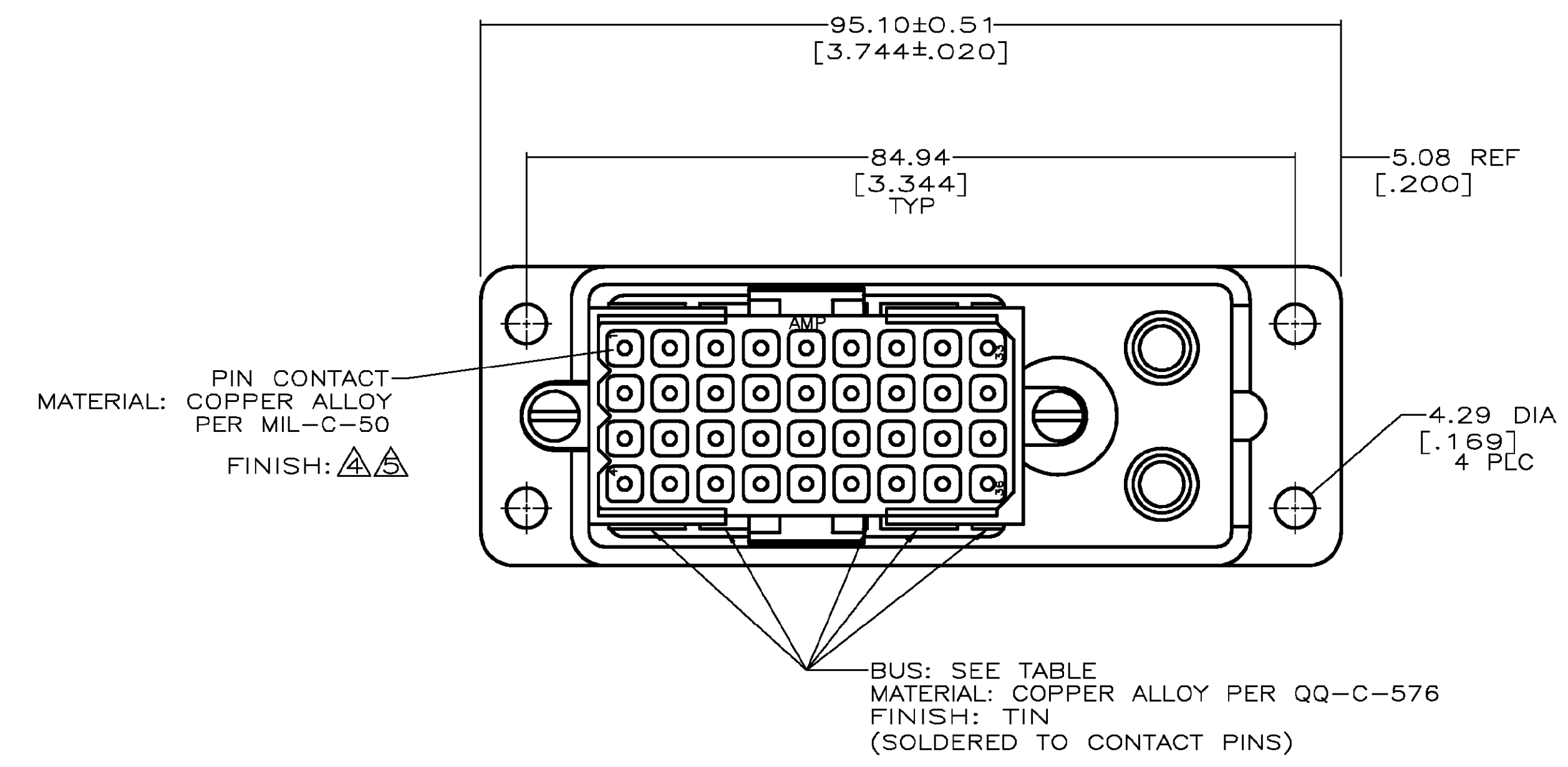


NOTES:

- MATES WITH PLUG 207019-1.
- CIRCUITS 1 THRU 8 COMMONED, 9 THRU 16 COMMONED, 17 THRU 24 COMMONED, 25 THRU 32 COMMONED AND 33 THRU 36 COMMONED TOGETHER.
- ALL CIRCUITS COMMONED TOGETHER.
- TIN OVER NICKEL PER QQ-N-290 OR COPPER PER MIL-C-14550.
- 0.76 μ m (.000030) MIN GOLD PER MIL-G-45204 FOR A LENGTH OF 5.08 (.200) FROM MATING END, 3.81 μ m (.000150) MIN TIN PER MIL-T-10727 FOR A LENGTH OF 4.83 (.190) MIN. FROM OPPOSITE END, BOTH OVER 1.27 μ m (.000050) MIN NICKEL PER QQ-N-290.



Δ	(1) 36 POSITION	Δ	208062-7
Δ	(1) 4 POSN AND (4) 8 POSN	Δ	208062-6
Δ	(1) 36 POSITION	Δ	208062-3
Δ	(1) 4 POSN AND (4) 8 POSN	Δ	208062-1
FINISH	BUS TYPE		PART NO.

THIS DRAWING IS A CONTROLLED DOCUMENT. DWN: D.GELTZ 08/13/02
 DUE: R.STONE 9-21-02
 APVD: R.STONE

Tyco Electronics Corporation
 Harrisburg, PA 17105

PRODUCT SPEC: -
 APPLICATION SPEC: -
 WEIGHT: -

SIZE: A1
 CAGE CODE: 00779
 DRAWING NO: C-208062

RESTRICTED TO: -
 CUSTOMER DRAWING

SCALE: 2:1 SHEET 1 OF 1 REV G